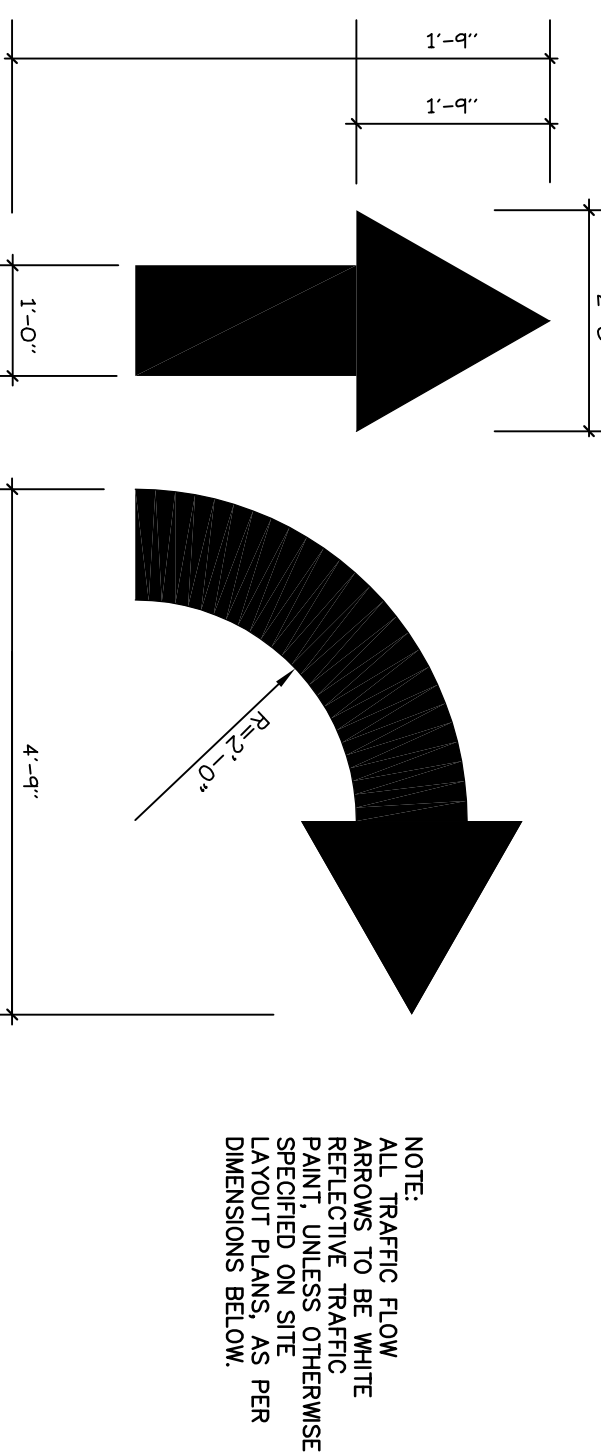
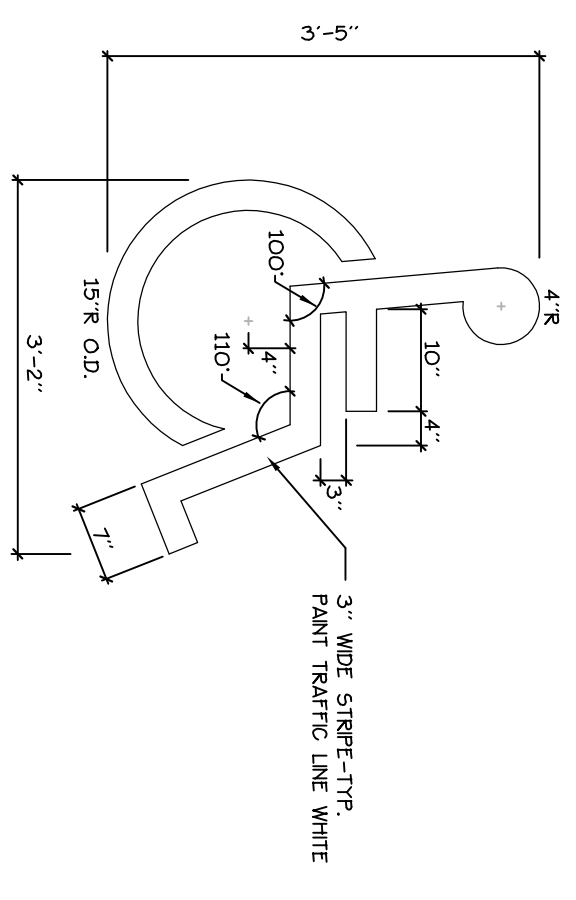


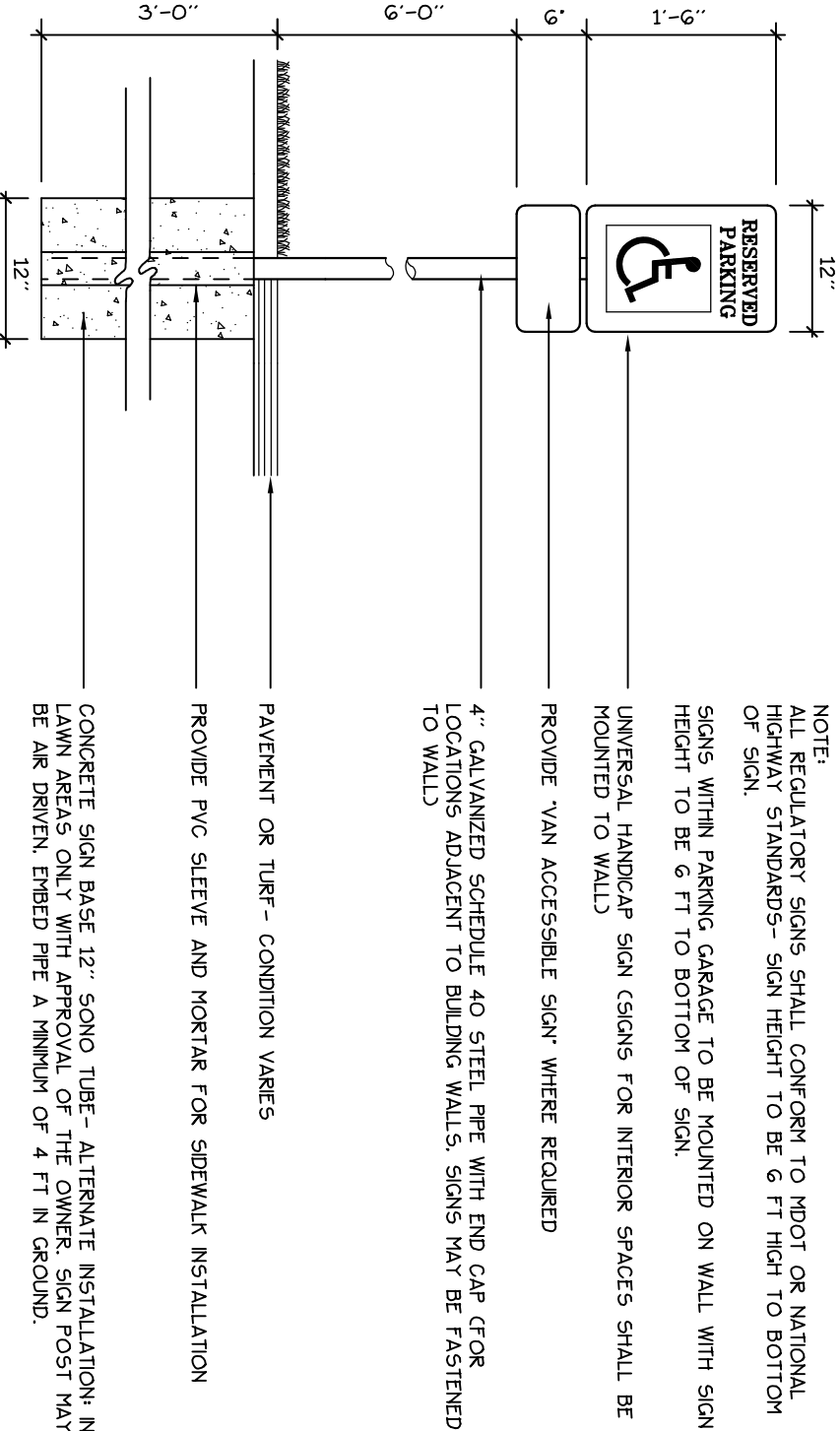
1 PAINTED CROSSWALK DETAIL
NOT TO SCALE



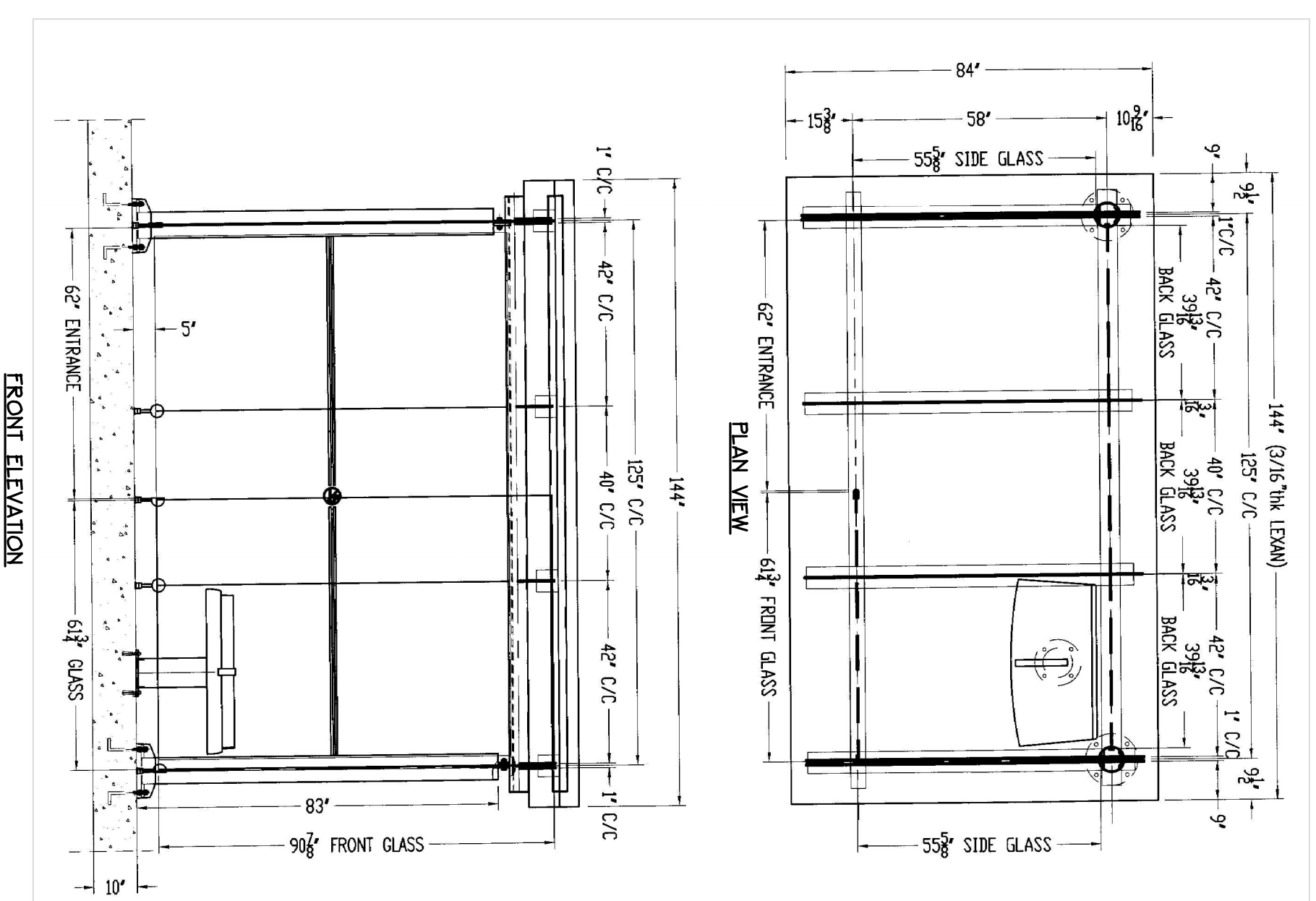
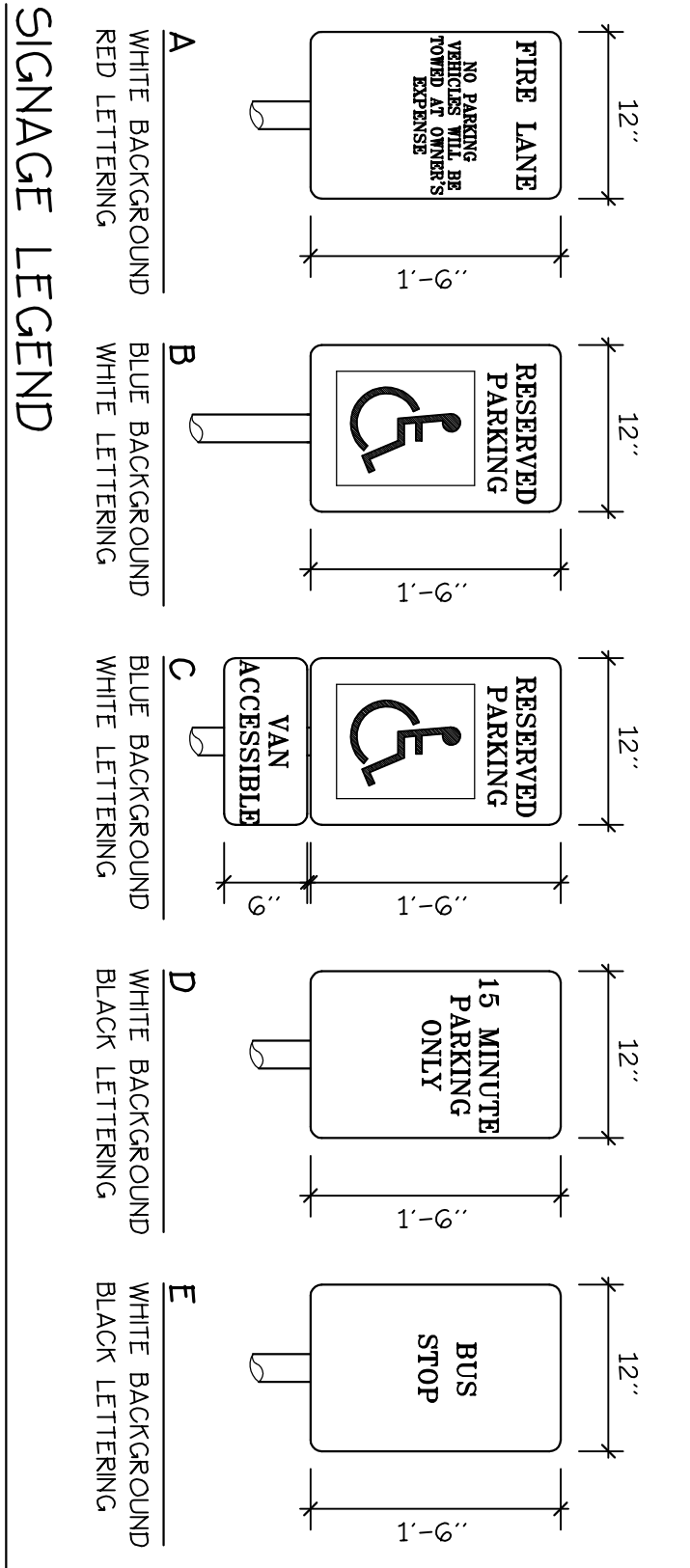
2 PAINTED TRAFFIC ARROW
NOT TO SCALE



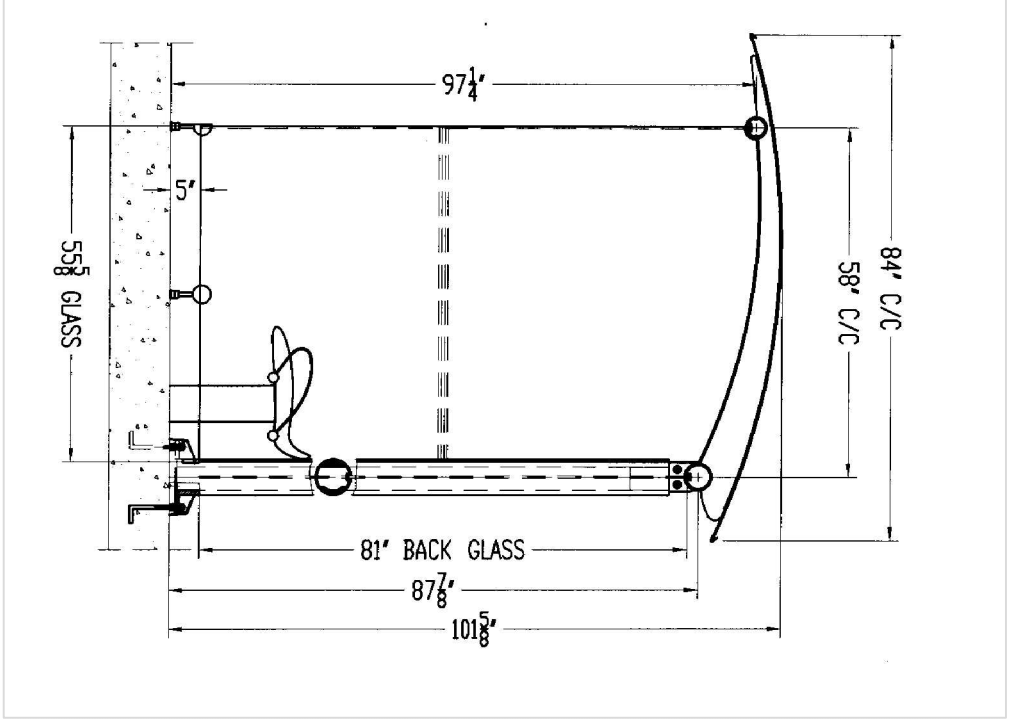
3 HANDICAP SPACE MARKINGS
NOT TO SCALE



4 SIGNAGE
NOT TO SCALE



5 CANTILEVER BUS SHELTER
NOT TO SCALE



NOTES:
1. CANTILEVER BUS SHELTER MANUFACTURED BY LES ENGINEERS ENGINEERING INC., 225 NORMAN WALK ST., FERRIS, QUEBEC, CANADA, H8R 1A3, TEL: (514) 353-1111.
2. SHELTER ROOF TO BE 3" THICK GREEN OR BROWN COLORED LEAN.
3. SHELTER TO BE POWDER COATED AND COLOR TO BE CONFIRMED BY CLIENTS.
4. GLASS PANELS TO BE 3" CLEAR TEMPERED GLASS AND SAFETY GLASS.
5. TWO SEAT PLASTIC BENCH SUPPORTED ON RIBBON ROOF STEEL PEDISTAL.
* INSTALLATION IN ACCORDANCE WITH MANUFACTURER'S REQUIREMENTS.

BAYSIDE VILLAGE

A STUDENT HOUSING COMPLEX

120 Marginal Way Portland, Maine

Prepared For:
SOUTHERN MAINE STUDENT HOUSING
247 Commercial Street
Rockport, Maine 04856
Tel: (207) 286-4067

Prepared By:
MITCHELL & ASSOCIATES
Landscape Architects
70 Center Street
Portland, Maine 04101
Tel: (207) 774-4427

Gorill-Palmer
Inc.
Consulting Engineers, Inc.
16 State Road
Cape Elizabeth, ME 04108
Tel: (207) 657-8800
Fax: (207) 657-8800

Date:
JUNE 15, 2007

Issued For:
ISSUED FOR FOUNDATION PERCING AND FOUNDATION PERMIT

Revisions:

Title:
SITE DETAILS

Scale:

North:

Sheet No.:
8

