



CWS Architects

Architecture
Space Planning
Value Design

434 Cumberland Avenue
Portland, ME 04101
Phone: (207) 774-4441
Fax: (207) 774-4016

www.CWSArch.com

Owner:
SOUTHERN MAINE STUDENT HOUSING LLC
247 COMMERCIAL STREET
ROCKPORT, MAINE 04856
TEL: (207) 236-4067

Contractor:
PIZZAGALLI CONSTRUCTION
100 FODEN RD WEST, SUITE 300
SOUTH PORTLAND, ME 04106
TEL: (207) 874-2323
FAX: (207) 874-2727

BAYSIDE VILLAGE - A STUDENT HOUSING COMPLEX

120 MARGINAL WAY
PORTLAND, MAINE

Project No: 2006-425BSV

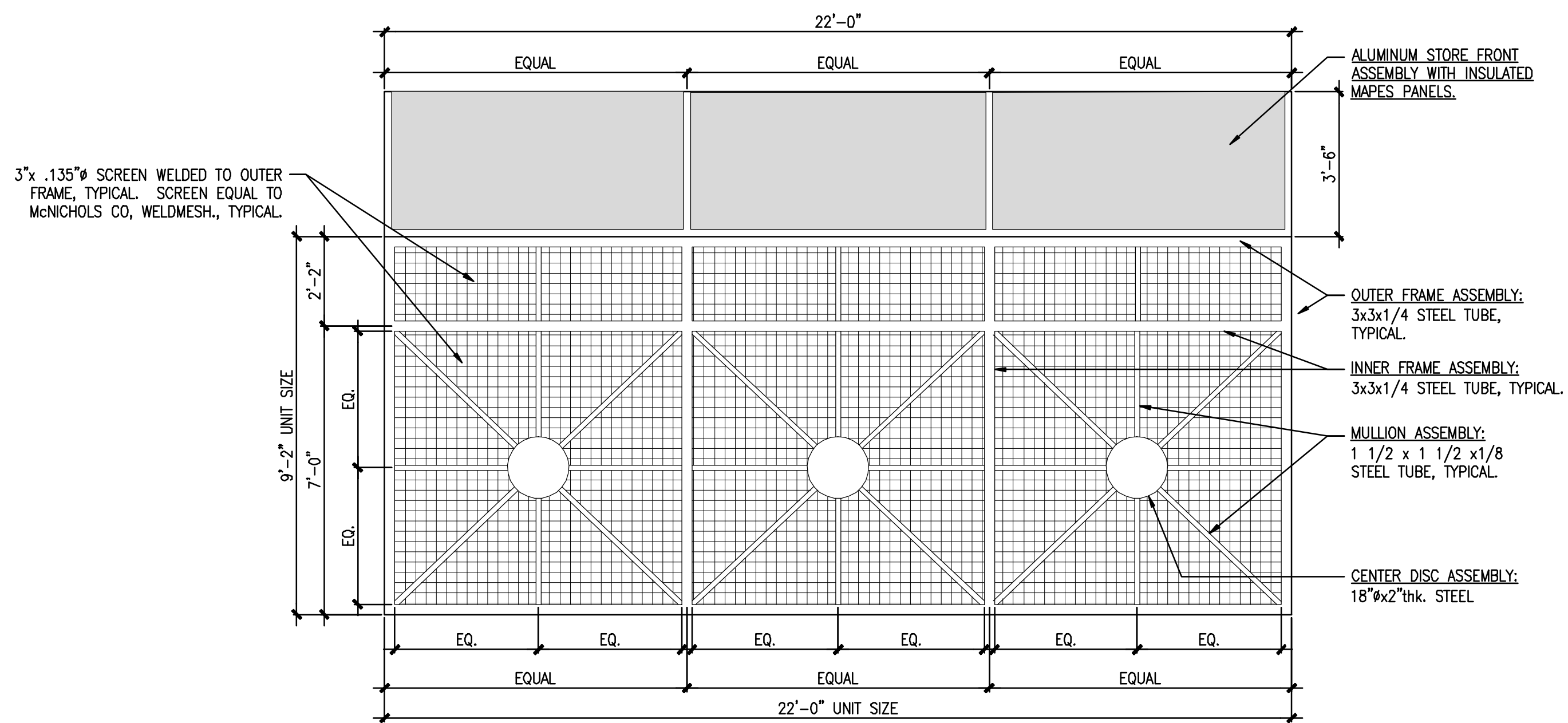
Drawing Title:
GARAGE SCREEN ELEVATIONS & MISC DETAILS

Scale: AS NOTED
Date: Progress 06/15/2007

- Revisions:
- △
 - △
 - △
 - △
 - △

Drawing Number:

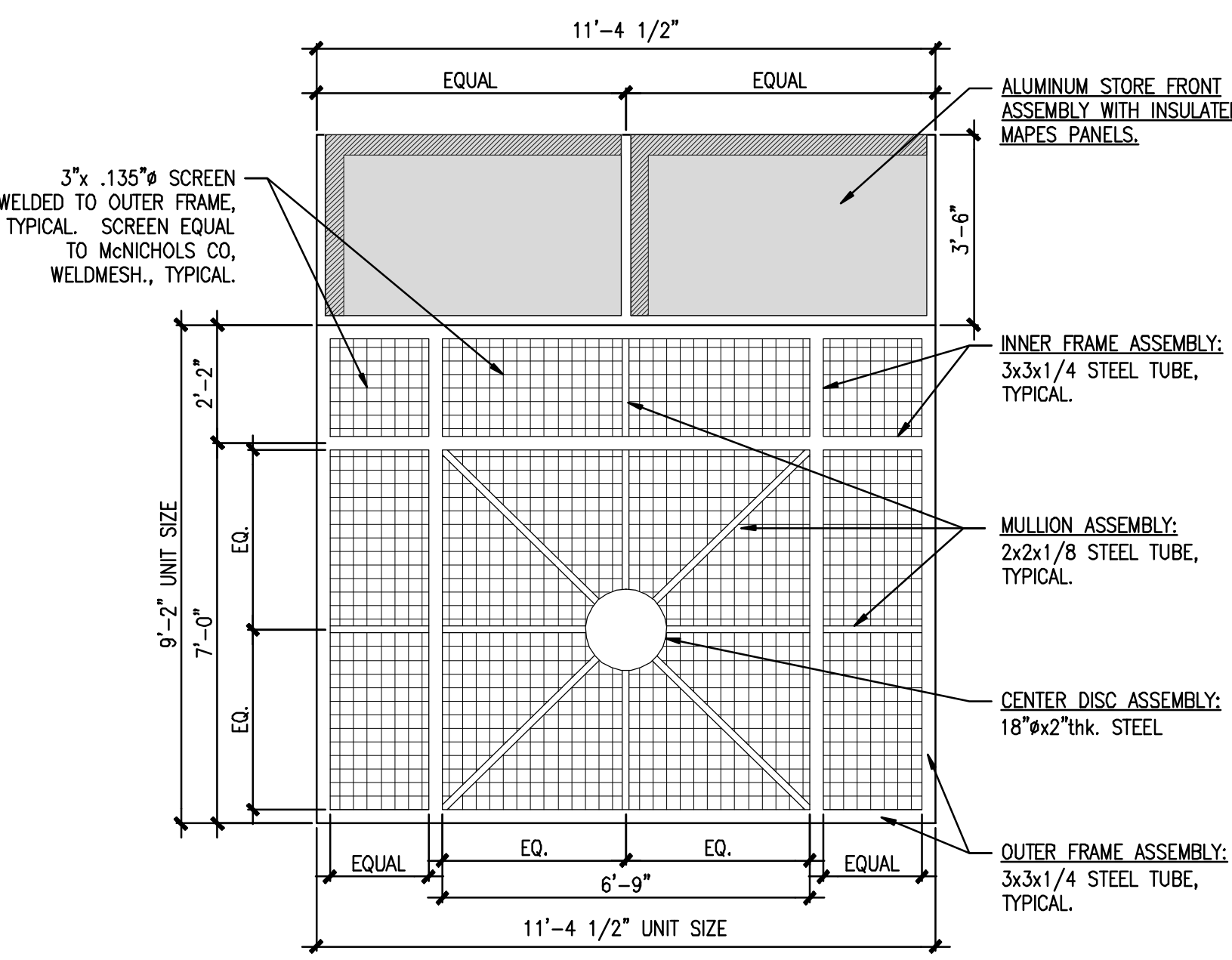
A8.31



Z
GARAGE VENTILATION SCREEN.
PAINTED STEEL WELDED ASSEMBLY

1 ELEVATION @ GARAGE SCREEN TYPE Z

REFERENCED FROM: SCALE: 3/8" = 1'-0"



X
GARAGE VENTILATION SCREEN.
PAINTED STEEL WELDED ASSEMBLY

5 ELEVATION @ GARAGE SCREEN TYPE X

REFERENCED FROM: SCALE: 3/8" = 1'-0"

- NOTES:
1. WELDMENT ASSEMBLY SHALL BE SQUARE IN ANY DIRECTION WITH 1/16". ASSEMBLY SHALL BE FLAT 1/8" IN ANY DIRECTION.
 2. WELDMENT ASSEMBLY SHALL BE FREE OF ANY IRREGULARITIES, WELD SPLATTER AND BURRS.
 3. ASSEMBLY JOINTS SHALL BE CONTINUOUSLY WELDED
 4. PROVIDE FACTORY-APPLIED ARCHITECTURAL COATING OVER HOT-DIP GALVANIZED STEEL, EQUAL TO COLORGALV BY DUNCAN GALVANIZING. COLOR AS SPECIFIED ON BUILDING ELEVATIONS.

9 TYPICAL NOTES FOR GARAGE SCREEN

REFERENCED FROM: SCALE: 3/8" = 1'-0"

10 DETAIL @

REFERENCED FROM: SCALE:

3 DETAIL @

REFERENCED FROM: SCALE:

4 DETAIL @

REFERENCED FROM: SCALE:

6 DETAIL @

REFERENCED FROM: SCALE:

7 DETAIL @

REFERENCED FROM: SCALE:

8 DETAIL @

REFERENCED FROM: SCALE:

11 DETAIL @

REFERENCED FROM: SCALE:

12 DETAIL @

REFERENCED FROM: SCALE: