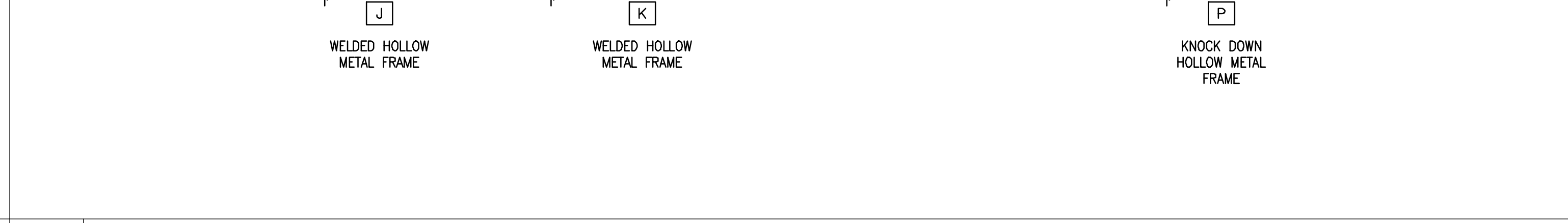
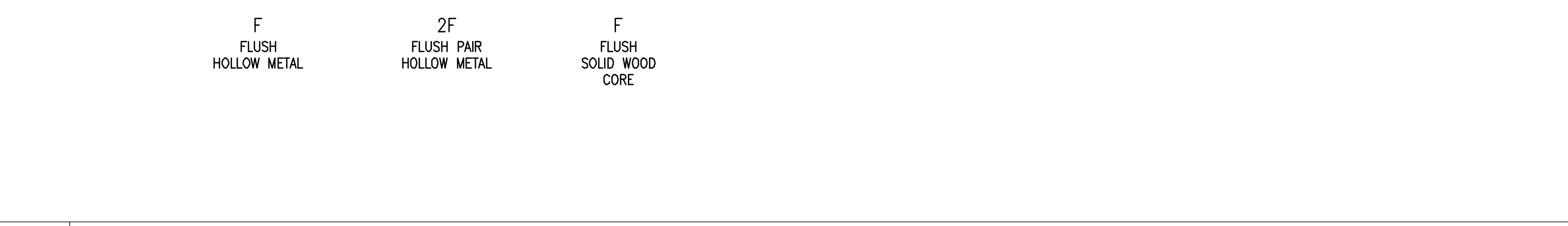
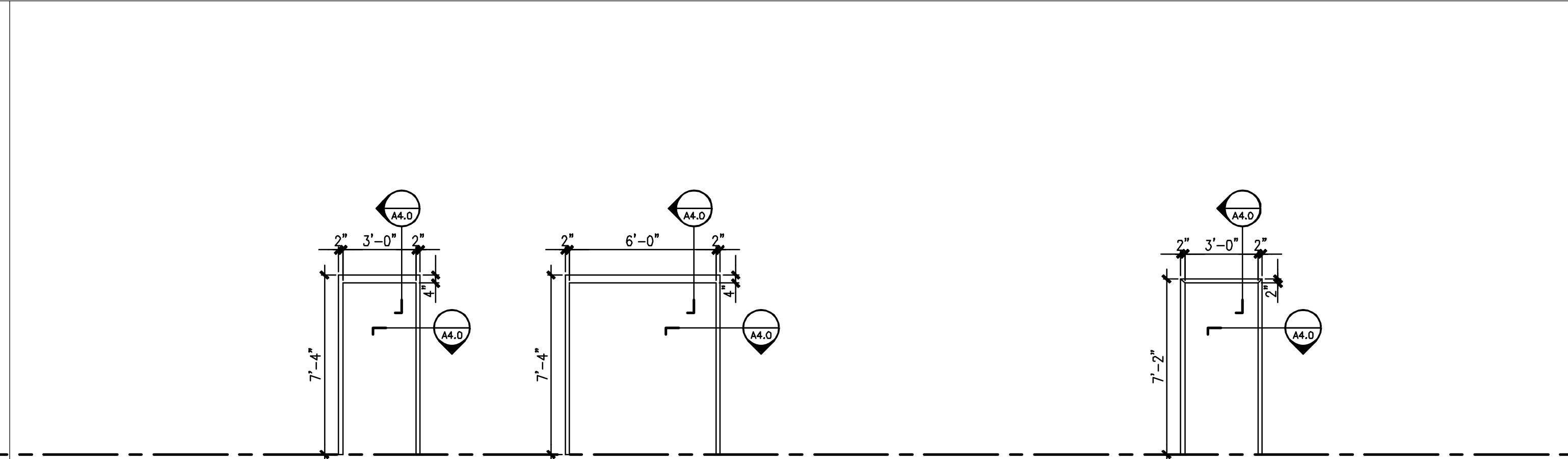
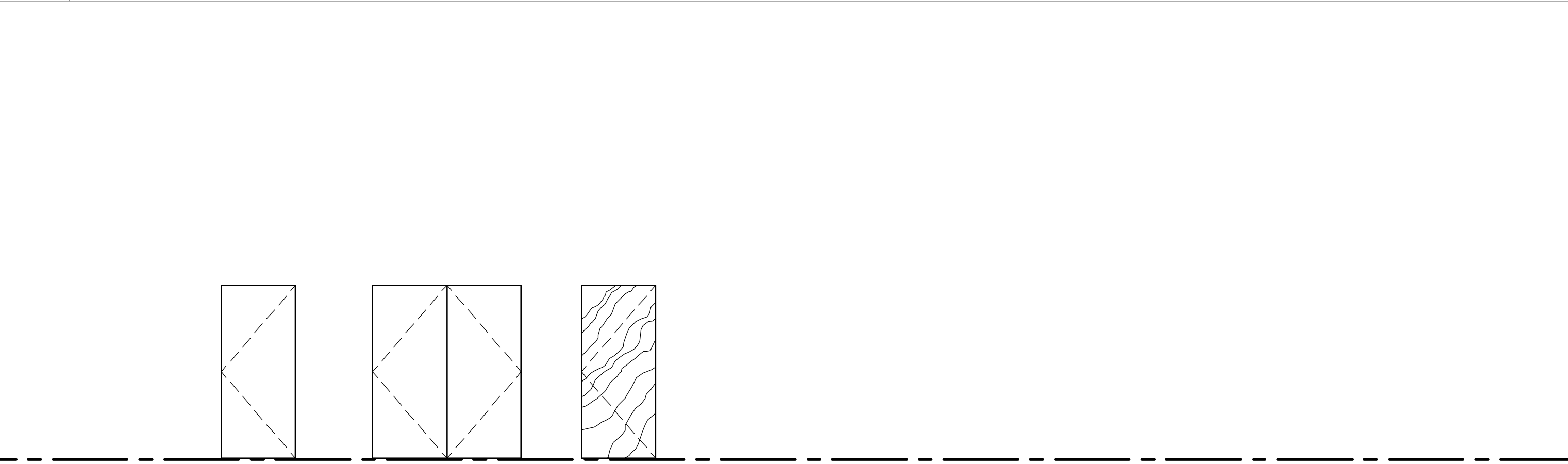
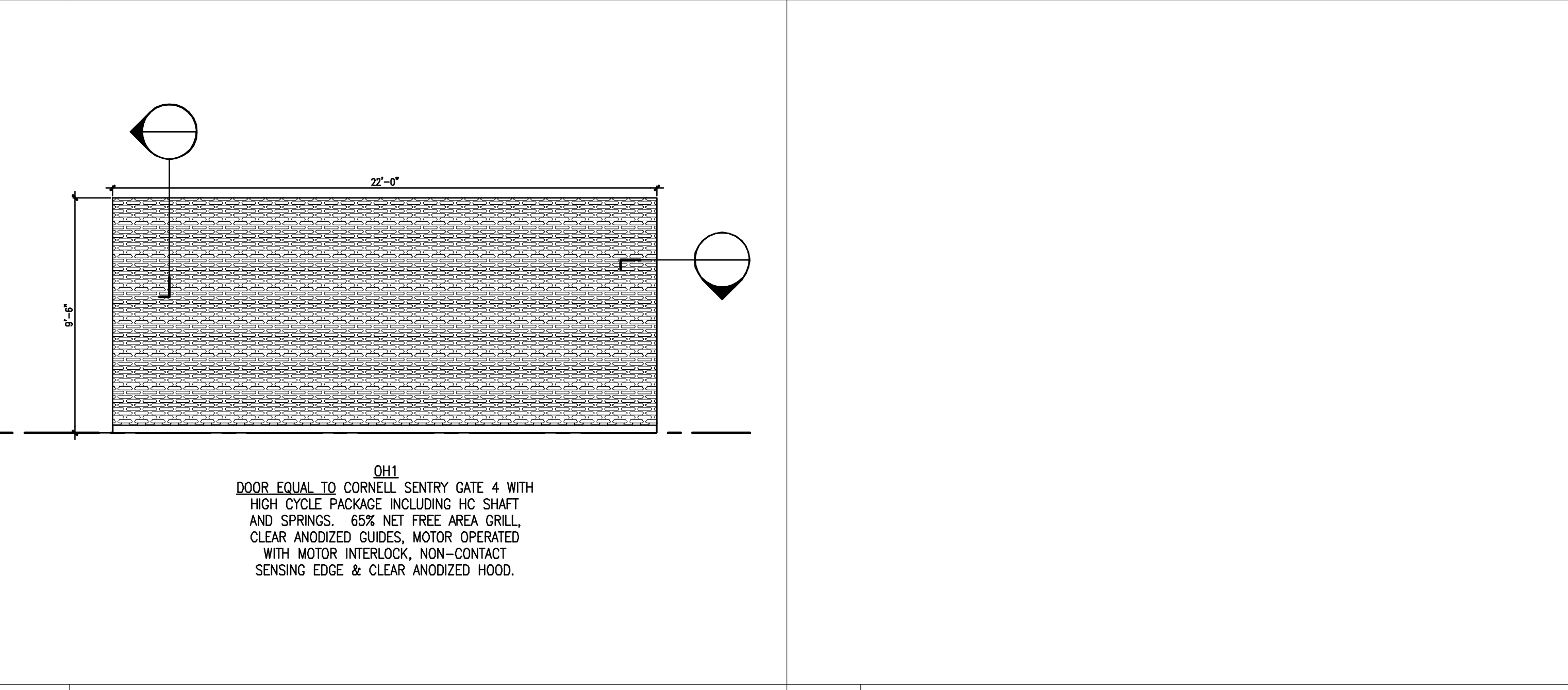


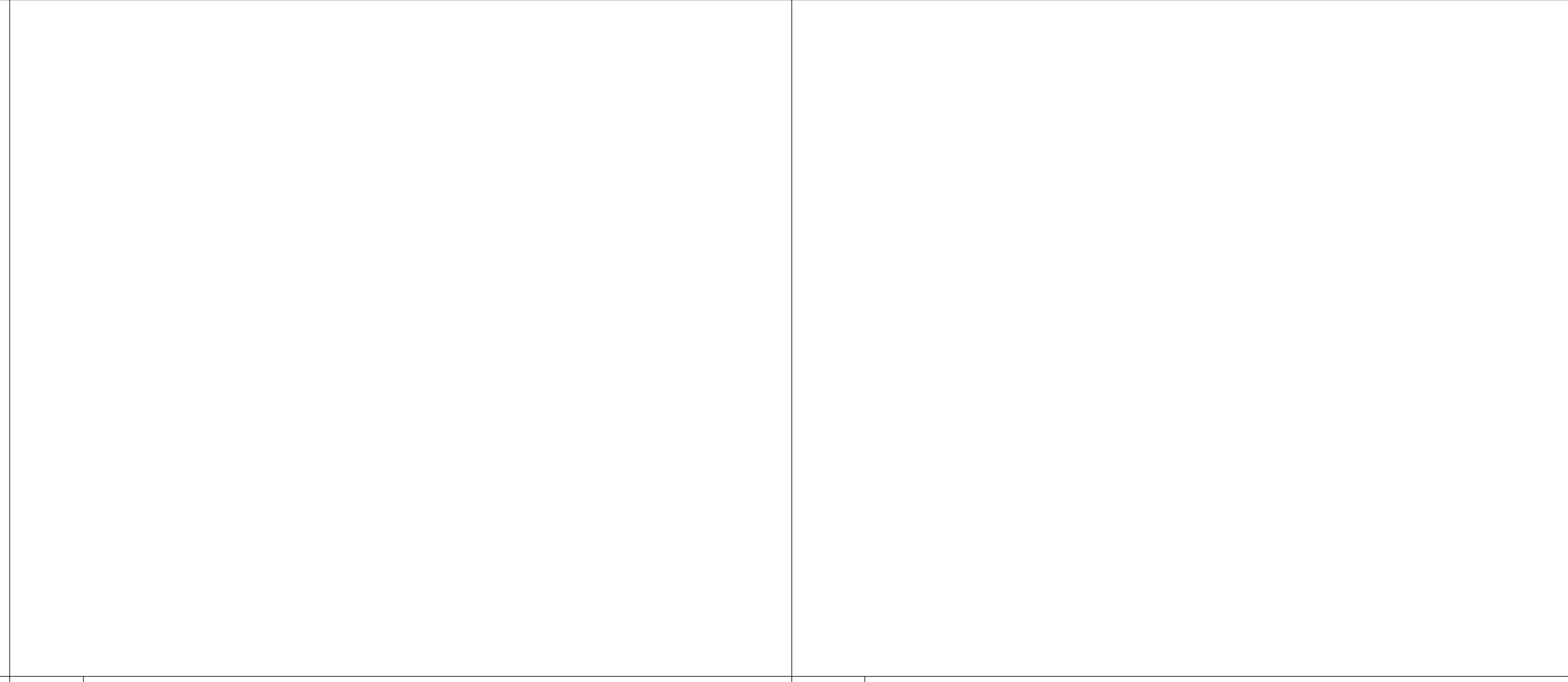
1 ALUMINUM STOREFRONT DOORS & DOOR FRAMES ELEVATIONS
 REFERENCED FROM: SCALE: 1/4" = 1'-0"



5 DOOR ELEVATIONS
 REFERENCED FROM: SCALE: 1/4" = 1'-0"



7 DOOR FRAME ELEVATIONS
 REFERENCED FROM: SCALE: 1/4" = 1'-0"



9 GARAGE DOOR ELEVATIONS
 REFERENCED FROM: SCALE: 1/4" = 1'-0"

10 DETAIL @
 REFERENCED FROM: SCALE:

11 DETAIL @
 REFERENCED FROM: SCALE:

12 DETAIL @
 REFERENCED FROM: SCALE:

CWS Architects
 Architecture
 Space Planning
 Value Design
 434 Cumberland Avenue
 Portland, ME 04101
 Phone: (207) 774-4441
 Fax: (207) 774-4016
 www.CWSArch.com

Owner: **SOUTHERN MAINE STUDENT HOUSING LLC**
 247 COMMERCIAL STREET
 ROCKPORT, MAINE 04856
 TEL: (207) 236-4067

Contractor: **PIZZAGALLI CONSTRUCTION**
 100 FODEN RD WEST, SUITE 300
 SOUTH PORTLAND, ME 04106
 TEL: (207) 874-2323
 FAX: (207) 874-2727

BAYSIDE VILLAGE - A STUDENT HOUSING COMPLEX
 120 MARGINAL WAY
 PORTLAND, MAINE

Project No: 2006-425BSV

Drawing Title: **DOOR AND DOOR FRAME ELEVATIONS & MISC DETAILS**
 Scale: 1/4" = 1'-0"
 Date: Progress 06/15/2007

Revisions:
 △
 △
 △
 △
 △
 △

Drawing Number:
A8.11