



CWS Architects

Architecture
Space Planning
Value Design

434 Cumberland Avenue
Portland, ME 04101
Phone: (207) 774-4441
Fax: (207) 774-4016

www.CWSarch.com

Owner:
SOUTHERN MAINE STUDENT HOUSING LLC
247 COMMERCIAL STREET
ROCKPORT, MAINE 04856
TEL: (207) 236-4067

Contractor:
PIZZAGALLI CONSTRUCTION
100 FODEN RD WEST, SUITE 300
SOUTH PORTLAND, ME 04106
TEL: (207) 874-2323
FAX: (207) 874-2727

BAYSIDE VILLAGE - A STUDENT HOUSING COMPLEX

120 MARGINAL WAY
PORTLAND, MAINE

Project No: 2006-432/BVP

Drawing Title:
ENLARGED UNIT PLANS - UNIT 3

'IBC UNIT TYPE B'

Scale: 1/4" = 1'-0"

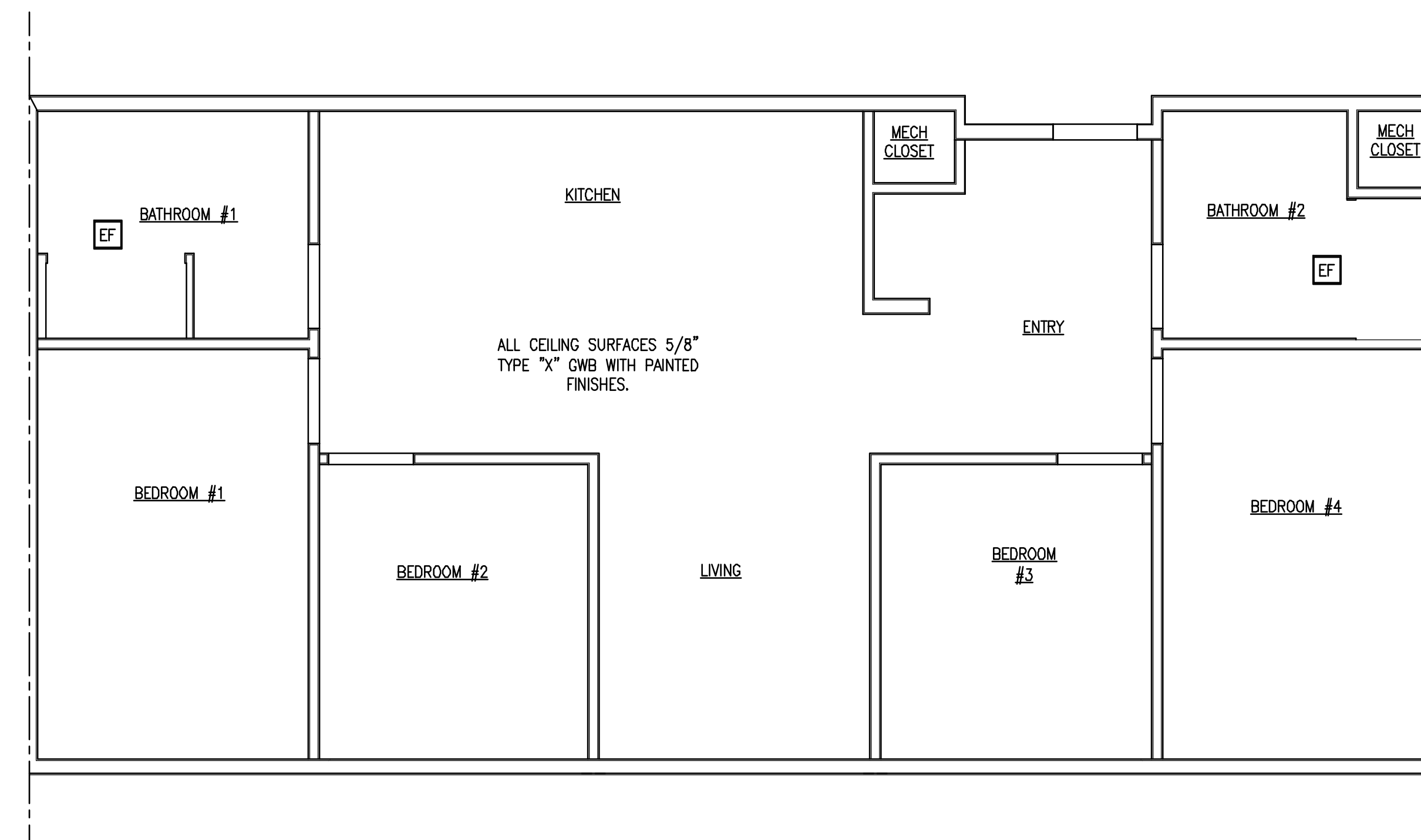
Date: Progress 06/15/2007

Revisions:



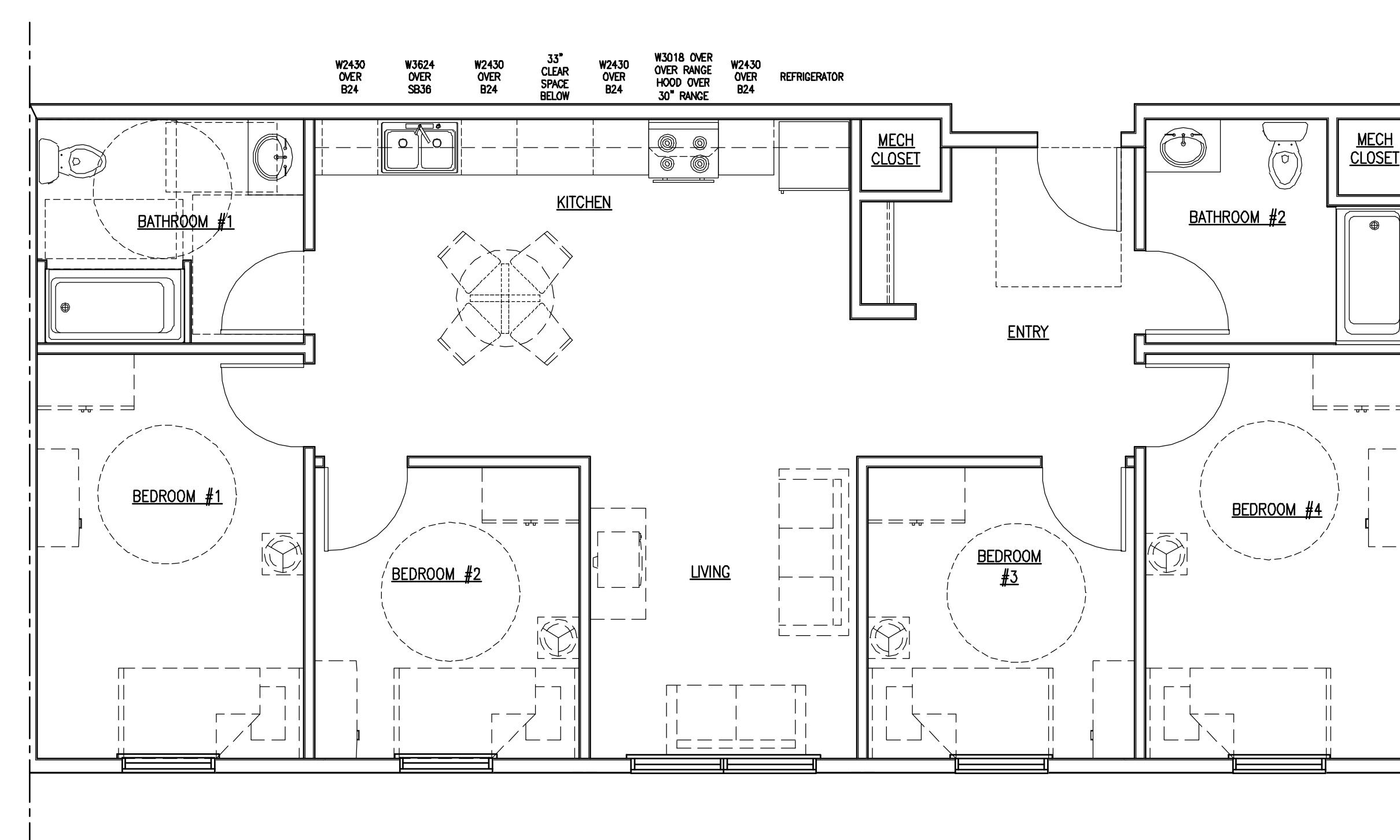
Drawing Number:

A1.U3



B REFLECTED CEILING PLAN

REFERENCED FROM: SCALE: 1/4" = 1'-0"

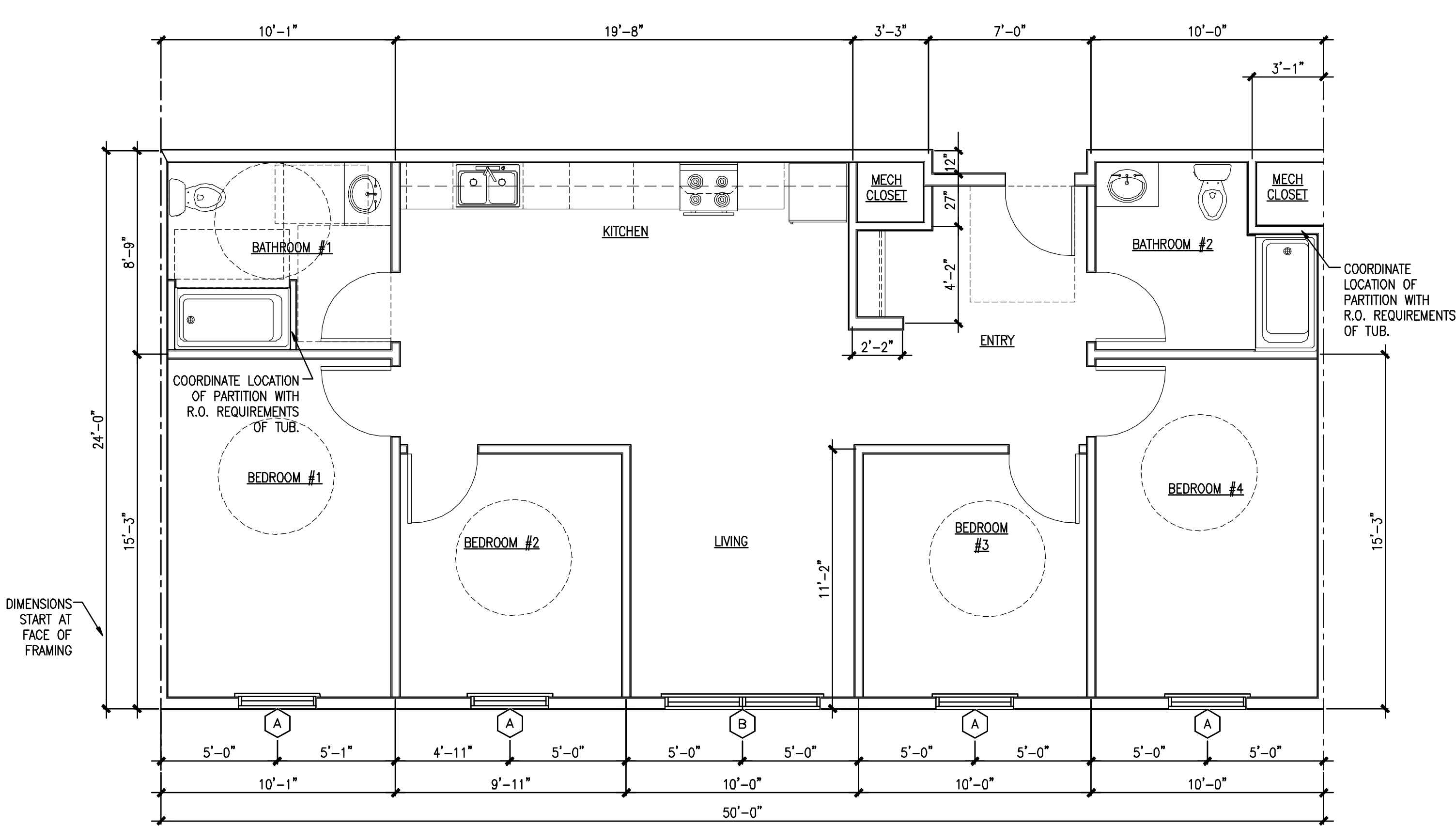


D LAYOUT FLOOR PLAN

REFERENCED FROM: SCALE: 1/4" = 1'-0"

A NOT USED

REFERENCED FROM: SCALE: 1/4" = 1'-0"



C DIMENSIONAL FLOOR PLAN

REFERENCED FROM: SCALE: 1/4" = 1'-0"