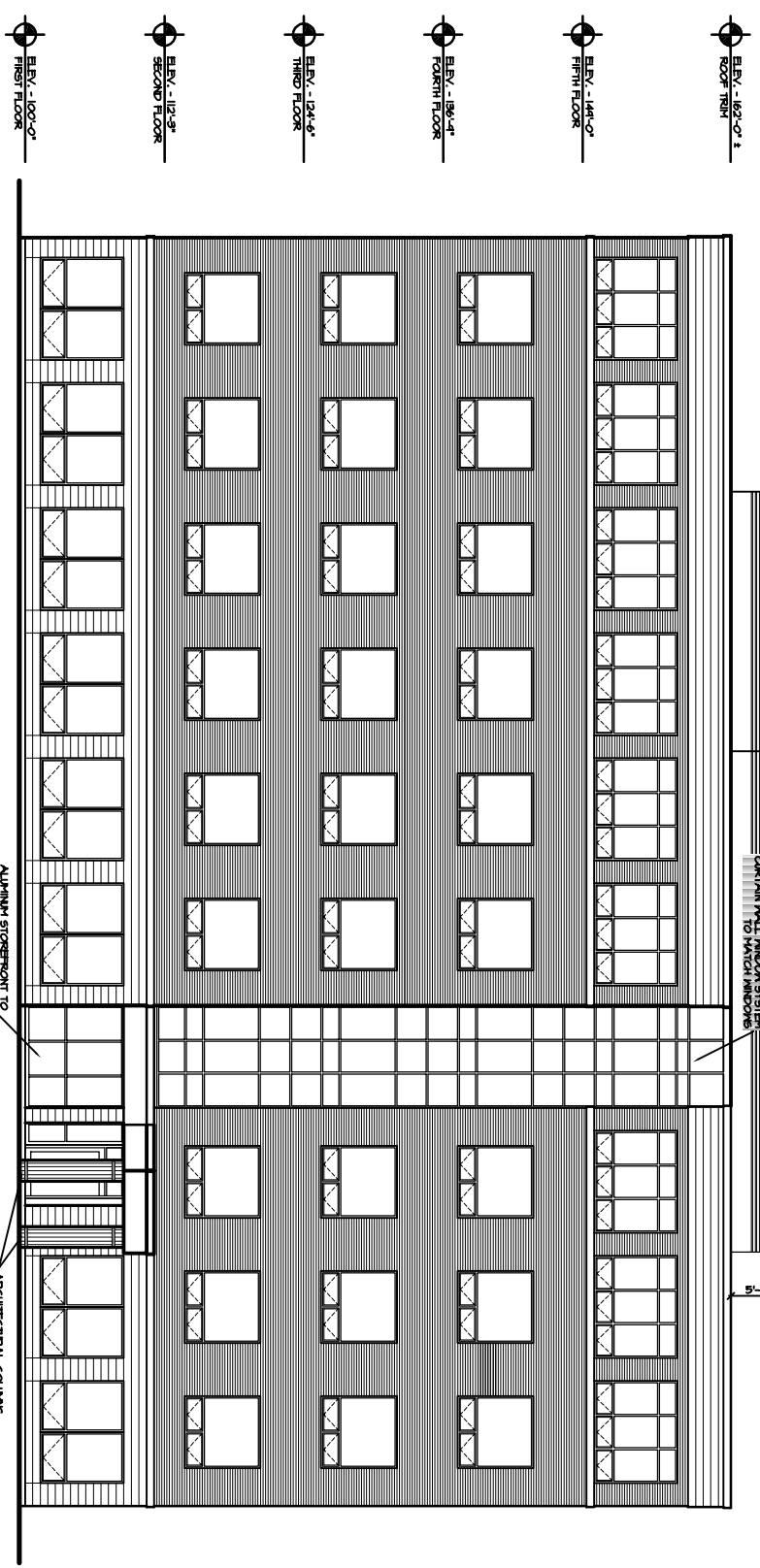
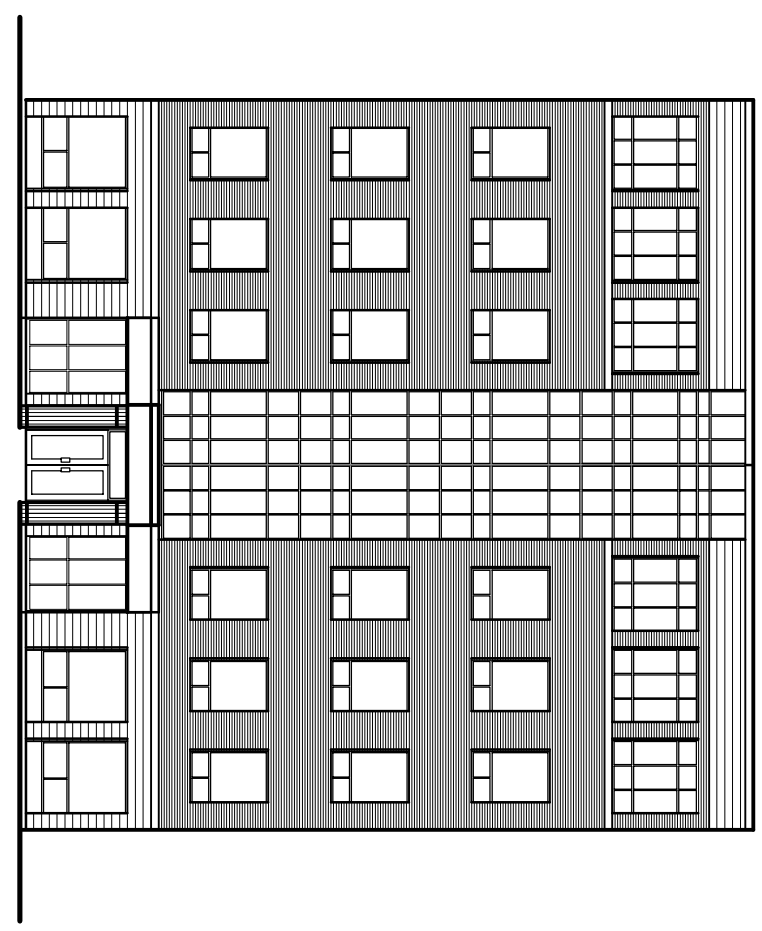


28 WEST ELEVATION (0-288)



29 EAST ELEVATION (0-289)



30 NE ELEVATION (0-290)

- ELEV. - 83'-0" ± ROOF RISE
- ELEV. - 78'-4" FIFTH FLOOR
- ELEV. - 76'-4" FOURTH FLOOR
- ELEV. - 72'-4" THIRD FLOOR
- ELEV. - 67'-8" SECOND FLOOR
- ELEV. - 62'-0" FIRST FLOOR

8

PROJECT: **BAYSIDE OFFICE BUILDING**
PORTLAND, ME

ELEVATIONS

OPECHEE
CONSTRUCTION CORPORATION
11 CORPORATE DRIVE, BELMONT NH 03220
PHONE (603) 527-9090 FAX (603) 527-9191

REVS.

DATE:	10/11/01
SCALE:	SEE PLAN
DRAWN BY:	DRB
SHEET:	