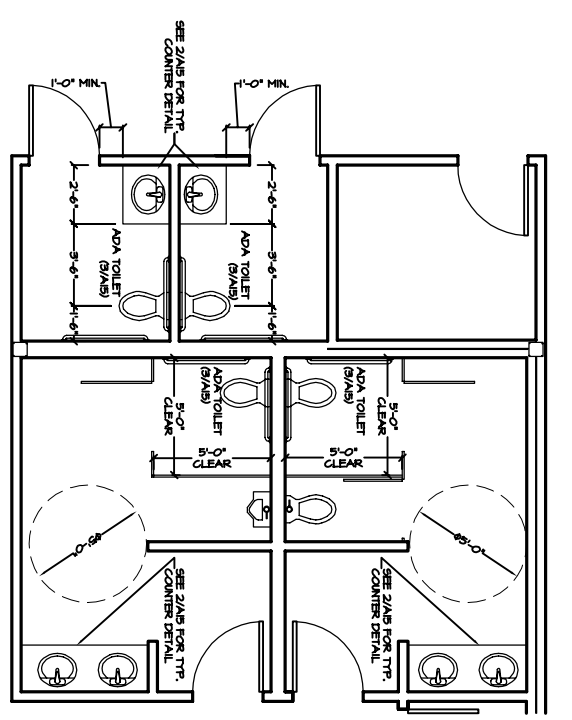
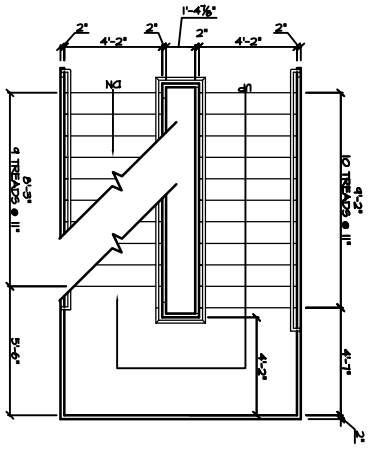


11
FOURTH FLOOR PLAN
PLAN



2 RESTROOM LAYOUT
1/4" = 1'-0"



3 STAIR-1 AND STAIR-2 LAYOUT
1/4" = 1'-0"

A5

PROJECT:
**BAYSIDE
OFFICE BUILDING**
PORTLAND, ME

**FOURTH
FLOOR PLAN**

OPECHEE
CONSTRUCTION CORPORATION
11 CORPORATE DRIVE, BELMONT NH 03220
PHONE (603) 527-9090 FAX (603) 527-9191

REVS.

DATE: 10/11/01
SCALE: SEE PLAN
DRAWN BY: DRB
SHEET: