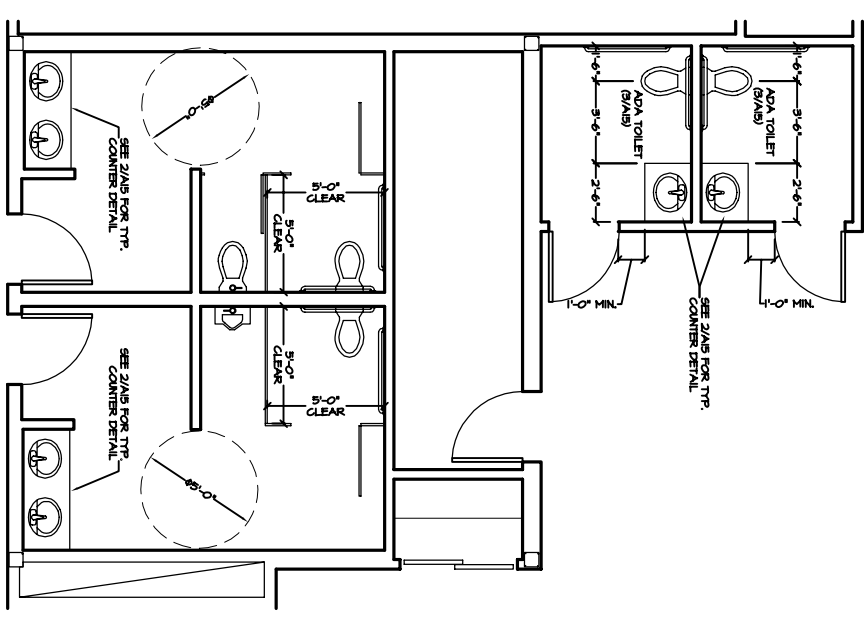
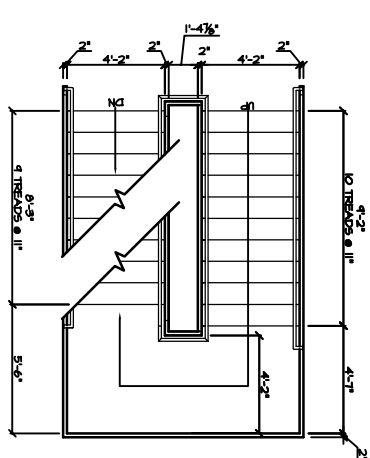


1 THIRD FLOOR PLAN
1/4" = 1'-0"



2 BAYSIDE THIRD RESTROOM LAYOUT
1/4" = 1'-0"



3 STAIR-1 AND STAIR-2 LAYOUT
1/4" = 1'-0"

A4

PROJECT:
BAYSIDE OFFICE BUILDING
PORTLAND, ME

THIRD FLOOR PLAN

OPECHEE
CONSTRUCTION CORPORATION
11 CORPORATE DRIVE, BELMONT NH 03220
PHONE (603) 527-9090 FAX (603) 527-9191

REVS:
DATE: 10/11/01
SCALE: SEE PLAN
DRAWN BY: DRB
SHEET:

DATE: 10/11/01
SCALE: SEE PLAN
DRAWN BY: DRB
SHEET: