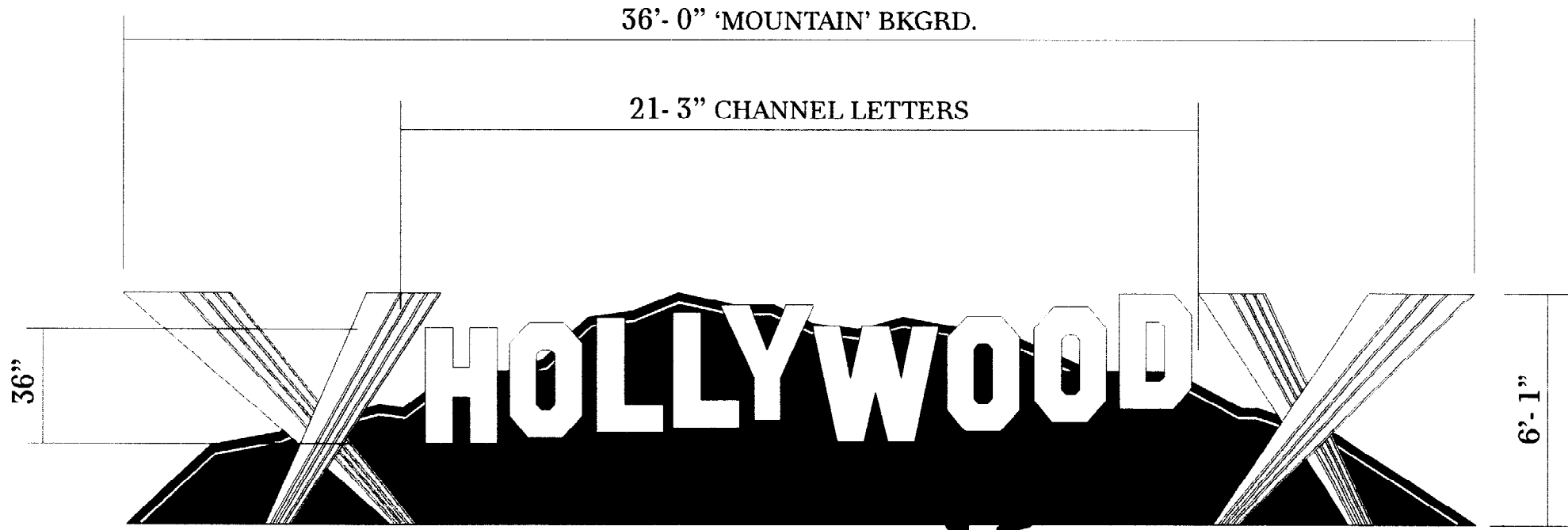


36" 'HOLLYWOOD', 24" 'VIDEO'. TYPICAL CHANNEL STYLE LETTERS
 'HOLLYWOOD' TO HAVE #7328 WHITE PLEXI FACE, 'VIDEO' TO HAVE
 #2793 RED PLEXI FACE. BOTH SETS OF LETTERS TO HAVE BLACK
 RETURNS & TRIM, BOTH SETS TO BE MOUNTED ON CENTER RACEWAYS.
 LETTERS CENTERED OVER CUSTOM 'MOUNTAIN' BACKGROUND PTD.
 (SW P-36) W/ BLUE & RED EXPOSED NEON STRIPES TO RUN ALONG TOP



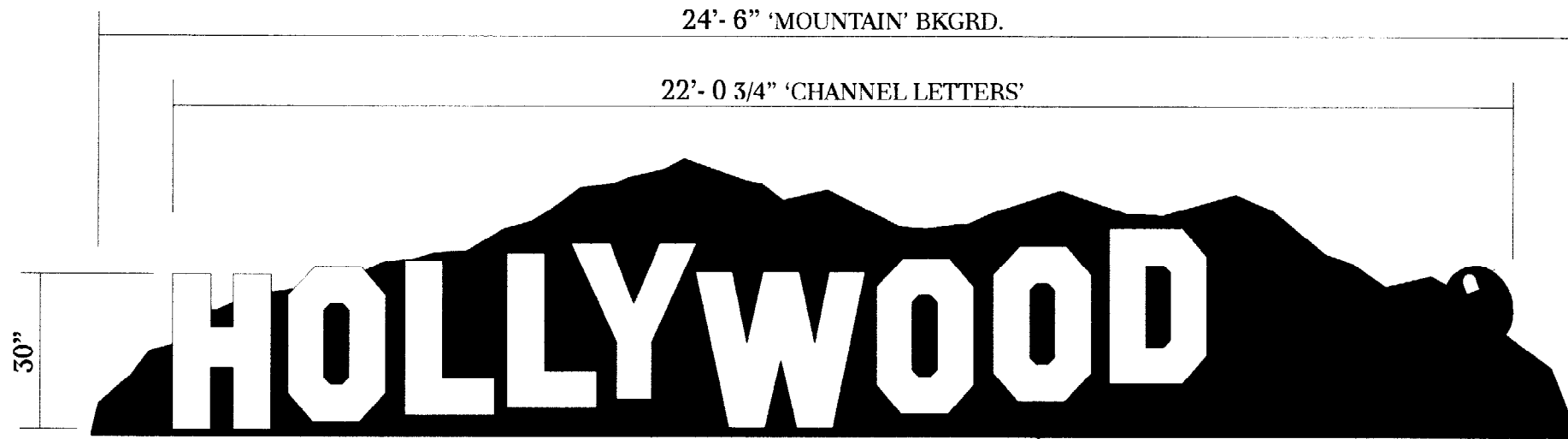
FRONT SIGN ELEVATION

ALLOWABLE Sqft: 220.0 Sqft.
 ACTUAL Sqft: 218.99 Sqft.

SCALE: 1/4" = 1'
 110.75 x 2 = 221.5 # MAX
 o/l

REV # 1	DATE: 1/7/2004	BY: KF	DRW DATE	S.D. # 4
REV # 2	DATE: 2/9/2004	BY: KF	12 - 30 - 2003	OPTION # 1
REV # 3	DATE: 2/11/2004	BY: KF	SALESMAN	DRAWN BY
HOLLYWOOD VIDEO PORTLAND, ME.			AF	K. F.

30" 'HOLLYWOOD' 15" 'VIDEO' TYPICAL CHANNEL STYLE LETTERS
 'HOLLYWOOD' TO HAVE #7328 WHITE PLEXI FACE, 'VIDEO' TO HAVE
 #2793 RED PLEXI FACE. BOTH SETS OF LETTERS TO HAVE BLACK
 RETURNS & TRIM, BOTH SETS TO BE MOUNTED ON CENTER RACEWAYS.
 LETTERS MOUNTED ON 1/8" ALUM 'MOUNTAIN' PANEL PAINTED (SW P-36)
 W/ BLUE & RED EXPOSED NEON STRIPES RUNNING ALONG TOP OF PANEL.



SIDE SIGN ELEVATIONS

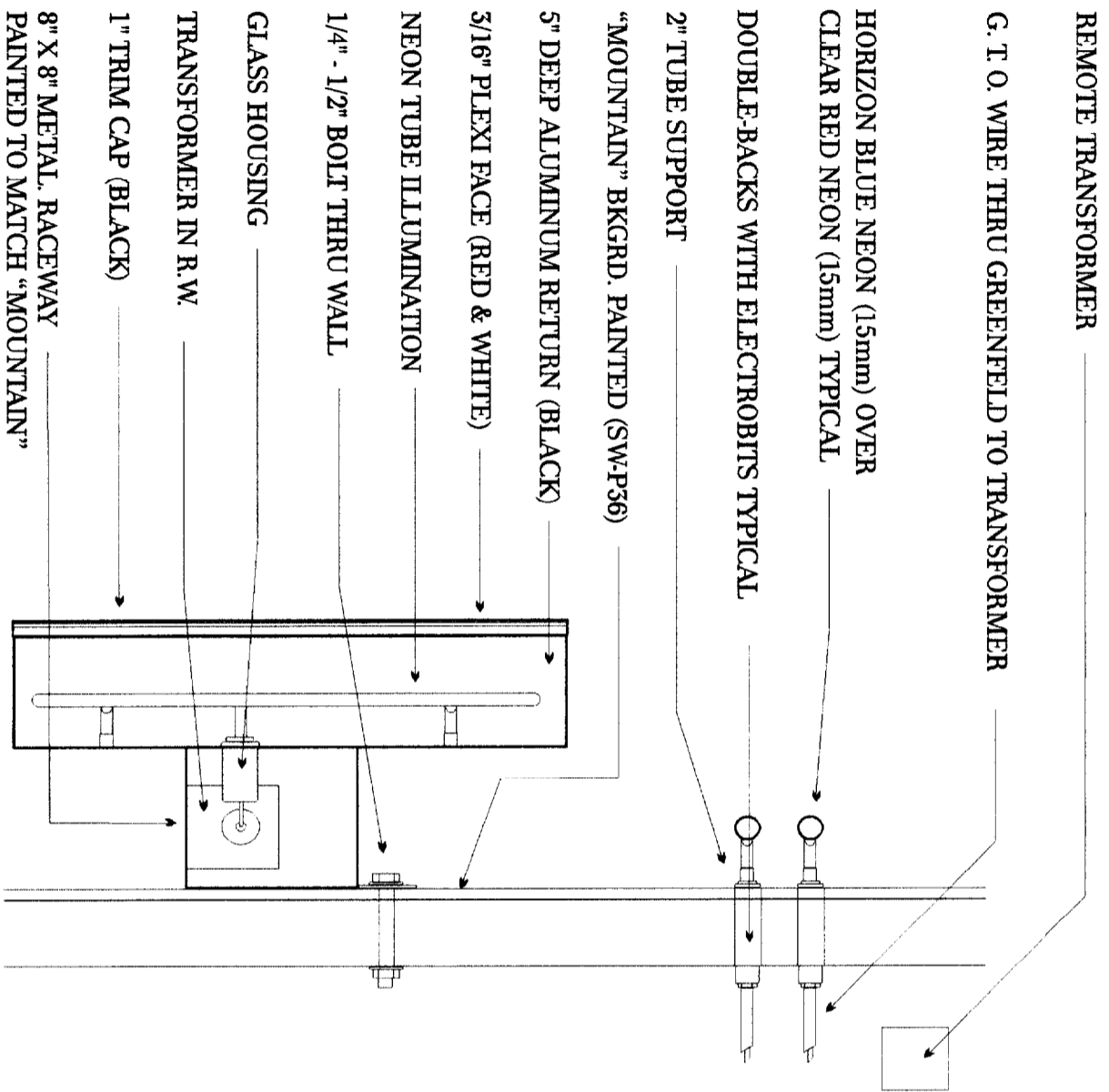
SCALE : 3/8" = 1'-0"

ALLOWABLE Sqft:
 ACTUAL Sqft:

120.0 Sqft.
 110.25 Sqft.

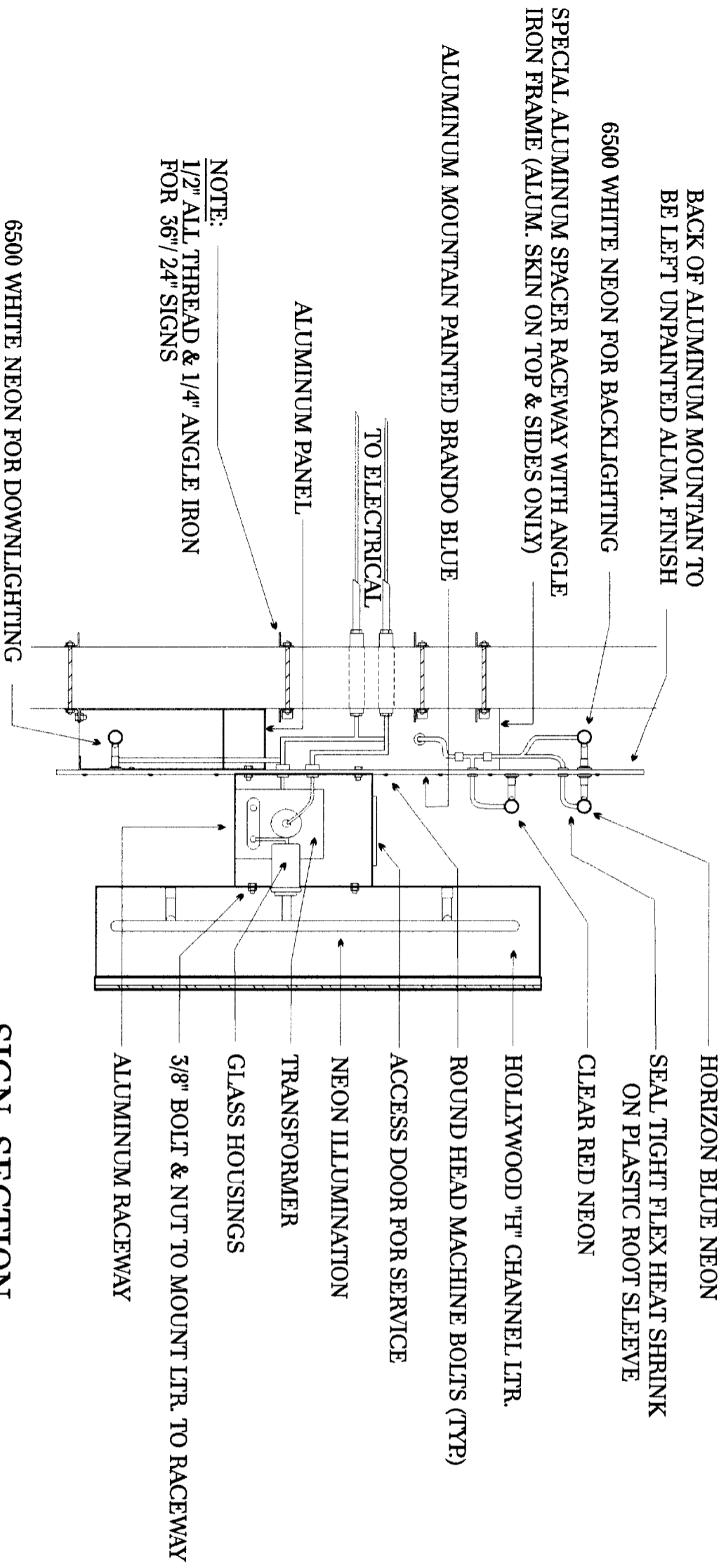
61 x 2 = 122 # MAX
 OK

REV. # 1	DATE: 1/7/2004	BY: KF	DRW DATE	S.D. #5
REV. # 2	DATE: 2/9/2004	BY: KF	12-30-2003	OPTION #1
REV. # 3	DATE: 2/11/2004	BY: KF	SALESMAN	DRAWN BY
			AF	K.F.
HOLLYWOOD VIDEO PORTLAND, ME.				



STOREFRONT SIGN SECTION

HOLLYWOOD VIDEO PORTLAND, ME.	REV. # 1	DATE: 1/7/2004	BY: KF	DRW DATE	S.D. #6
	REV. # 2	DATE: 2/9/2004	BY: KF	12 - 30 - 2003	OPTION #1
	REV. # 3	DATE: 2/11/2004	BY: KF	SALESMAN AF	DRAWN BY K. F.



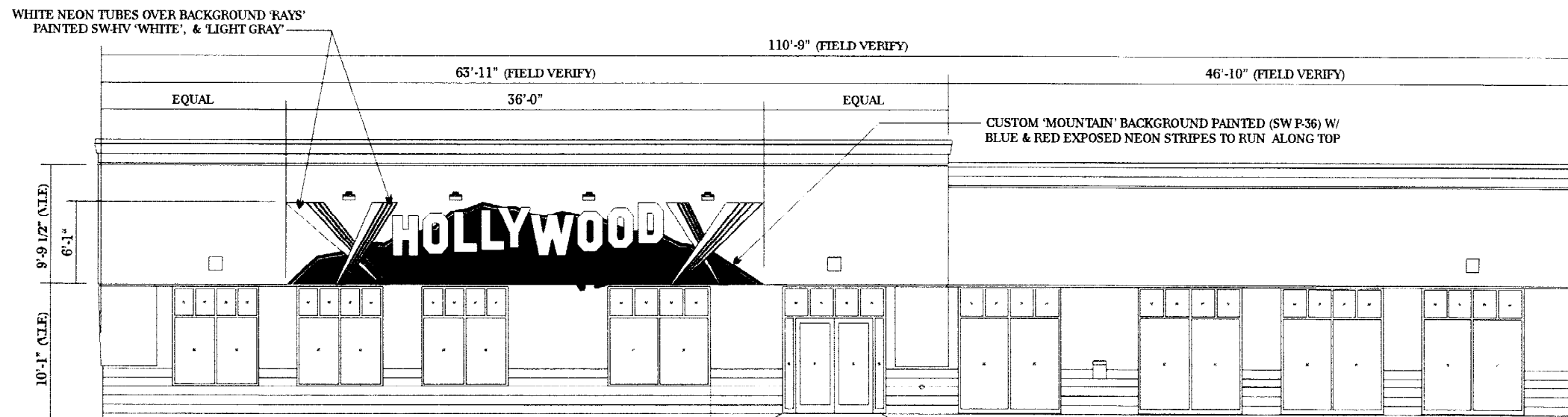
(PAINT RACEWAY TO MATCH STOREFRONT FASCIA COLOR)
 ('HOLLYWOOD' - WHITE FACES) ('VIDEO' - RED FACES)
 (TRIM CAPS & RETURNS TO BE A BLACK FINISH)

SIGN SECTION

HOLLYWOOD VIDEO
 PORTLAND, ME.

REV # 1	DATE: 1/7/2004	BY: KF	DRW DATE	S.D. #7
REV # 2	DATE: 2/9/2004	BY: KF	12 - 30 - 2003	OPTION #1
REV # 3	DATE: 2/11/2004	BY: KF	SALESMAN	DRAWN BY
			AF	K. F.

36" 'HOLLYWOOD', 24" 'VIDEO'. TYPICAL CHANNEL STYLE LETTERS
 'HOLLYWOOD' TO HAVE #7328 WHITE PLEXI FACE, 'VIDEO' TO HAVE
 #2793 RED PLEXI FACE. BOTH SETS OF LETTERS TO HAVE BLACK
 RETURNS & TRIM, BOTH SETS TO BE MOUNTED ON CENTER RACEWAYS.
 LETTERS CENTERED OVER CUSTOM 'MOUNTAIN' BACKGROUND PTD.
 (SW P-36) W/ BLUE & RED EXPOSED NEON STRIPES TO RUN ALONG TOP



STOREFRONT ELEVATION

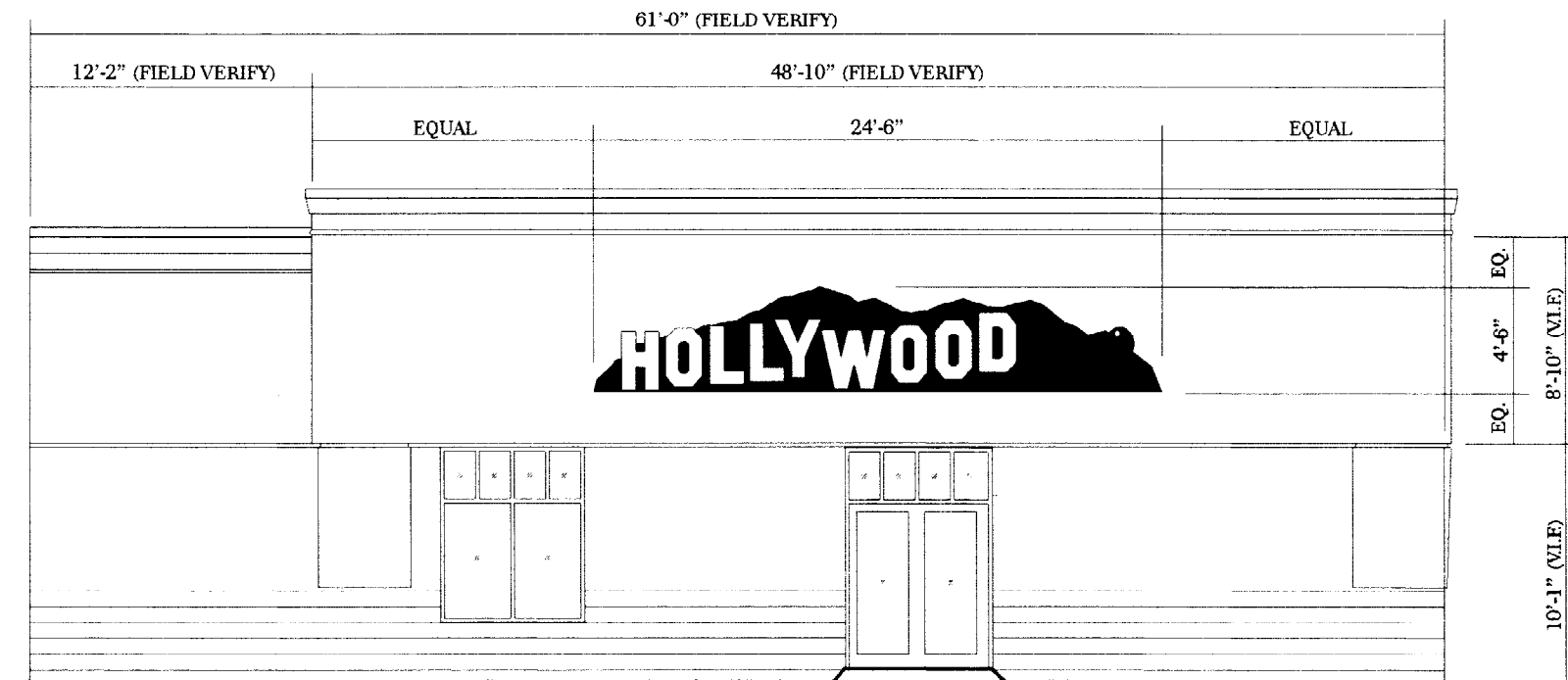
SCALE : 3/32" = 1'-0"

ALLOWABLE SIGN AREA = 220 S. F.
 ACTUAL SIGN AREA = 218.99 S. F. (6.083' x 36')

REV # 1	DATE: 1/7/2004	BY: KF	DRW DATE	S.D. # 1
REV # 2	DATE: 2/9/2004	BY: KF	12 - 30 - 2003	OPTION # 1
REV # 3	DATE: 2/11/2004	BY: KF	SALESMAN	DRAWN BY
			AF	K. F.

HOLLYWOOD VIDEO
 PORTLAND, ME.

30" 'HOLLYWOOD' 15" 'VIDEO' TYPICAL CHANNEL STYLE LETTERS
'HOLLYWOOD' TO HAVE #7328 WHITE PLEXI FACE, 'VIDEO' TO HAVE
#2793 RED PLEXI FACE. BOTH SETS OF LETTERS TO HAVE BLACK
RETURNS & TRIM, BOTH SETS TO BE MOUNTED ON CENTER RACEWAYS.
LETTERS MOUNTED ON 1/8" ALUM 'MOUNTAIN' PANEL PAINTED (SW P-36)
W/ BLUE & RED EXPOSED NEON STRIPES RUNNING ALONG TOP OF PANEL.
PANEL TO BE SET OFF WALL W/ SPECIAL ALUM. SPACER RACEWAY W/
ANGLE IRON FRAME. PANEL TO BE BACKLIT W/ WHITE NEON TUBING.



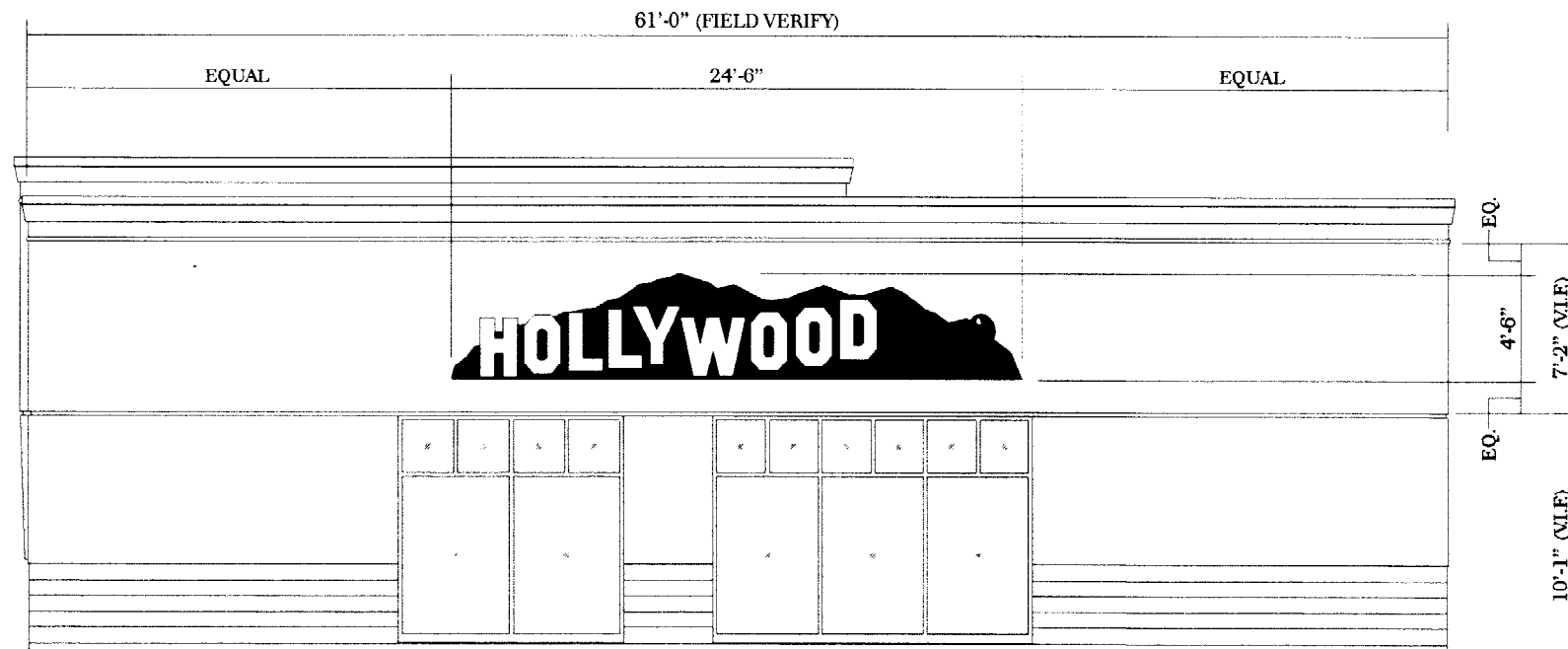
LEFT SIDE ELEVATION

SCALE : 1/8" = 1'-0"

ALLOWABLE SIGN AREA = 120 S. F.
ACTUAL SIGN AREA = 110.25 S. F. (4.5' x 24.5')

REV. # 1	DATE: 1/7/2004	BY: KF	S.D. #2
REV. # 2	DATE: 2/8/2004	BY: KF	OPTION #1
REV. # 3	DATE: 2/11/2004	BY: KF	DRAWN BY
			K. F.
			SALESMAN
			AF
			DRW DATE:
			12 - 30 - 2003
			HOLLYWOOD VIDEO
			PORTLAND, ME.

30" 'HOLLYWOOD' 15" 'VIDEO' TYPICAL CHANNEL STYLE LETTERS
 'HOLLYWOOD' TO HAVE #7328 WHITE PLEXI FACE, 'VIDEO' TO HAVE
 #2793 RED PLEXI FACE. BOTH SETS OF LETTERS TO HAVE BLACK
 RETURNS & TRIM, BOTH SETS TO BE MOUNTED ON CENTER RACEWAYS.
 LETTERS MOUNTED ON 1/8" ALUM 'MOUNTAIN' PANEL PAINTED (SW P-36)
 W/ BLUE & RED EXPOSED NEON STRIPES RUNNING ALONG TOP OF PANEL.
 PANEL TO BE SET OFF WALL W/ SPECIAL ALUM. SPACER RACEWAY W/
 ANGLE IRON FRAME. PANEL TO BE BACKLIT W/ WHITE NEON TUBING.



RIGHT SIDE ELEVATION

SCALE : 1/8" = 1'-0"

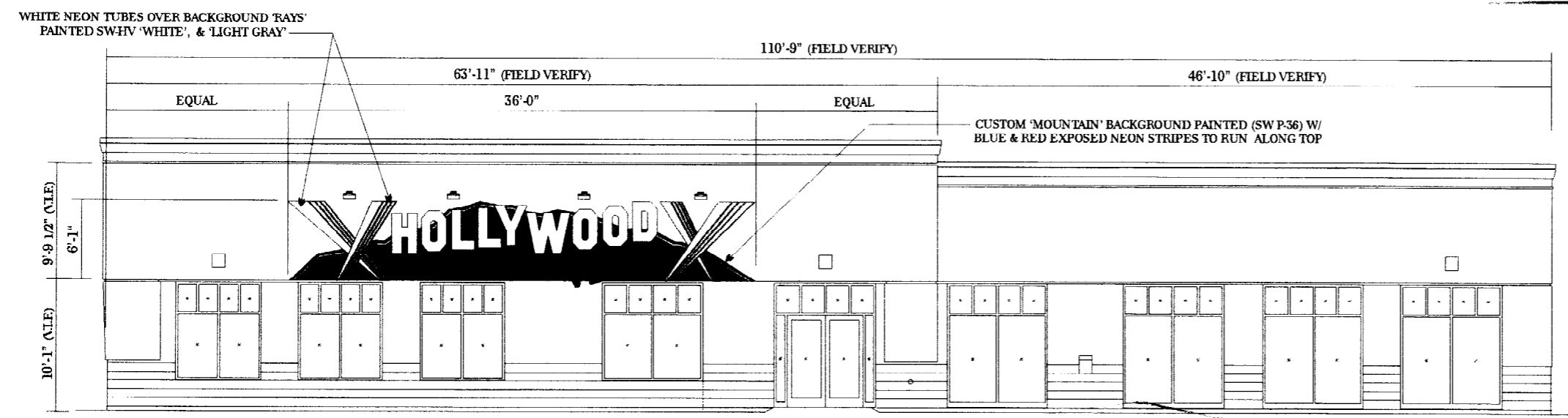
ALLOWABLE SIGN AREA = 120 S. F.
 ACTUAL SIGN AREA = 110.25 S. F. (4.5' x 24.5')

REV. # 1	DATE: 1/7/2004	BY: KF	DRW DATE	S.D. #3
REV. # 2	DATE: 2/8/2004	BY: KF	12 - 30 - 2003	OPTION #1
REV. # 3	DATE: 2/11/2004	BY: KF	SALESMAN	DRAWN BY
			AF	K. F.
HOLLYWOOD VIDEO PORTLAND, ME.				

36" 'HOLLYWOOD', 24" 'VIDEO'. TYPICAL CHANNEL STYLE LETTERS
 'HOLLYWOOD' TO HAVE #7328 WHITE PLEXI FACE, 'VIDEO' TO HAVE
 #2793 RED PLEXI FACE. BOTH SETS OF LETTERS TO HAVE BLACK
 RETURNS & TRIM, BOTH SETS TO BE MOUNTED ON CENTER RACEWAYS.
 LETTERS CENTERED OVER CUSTOM 'MOUNTAIN' BACKGROUND PTD.
 (SW P-36) W/ BLUE & RED EXPOSED NEON STRIPES TO RUN ALONG TOP

DEPT. OF BUILDING INSPECTION
 CITY OF PORTLAND, ME
 MAR - 8 2004
 RECEIVE

REV. # 1	DATE: 1/7/2004	BY: KF	DRW DATE	S.D. # 1
REV. # 2	DATE: 2/9/2004	BY: KF	12-30-2003	OPTION # 1
REV. # 3	DATE: 2/11/2004	BY: KF	SALESMAN	DRAWN BY
			AF	K. E.

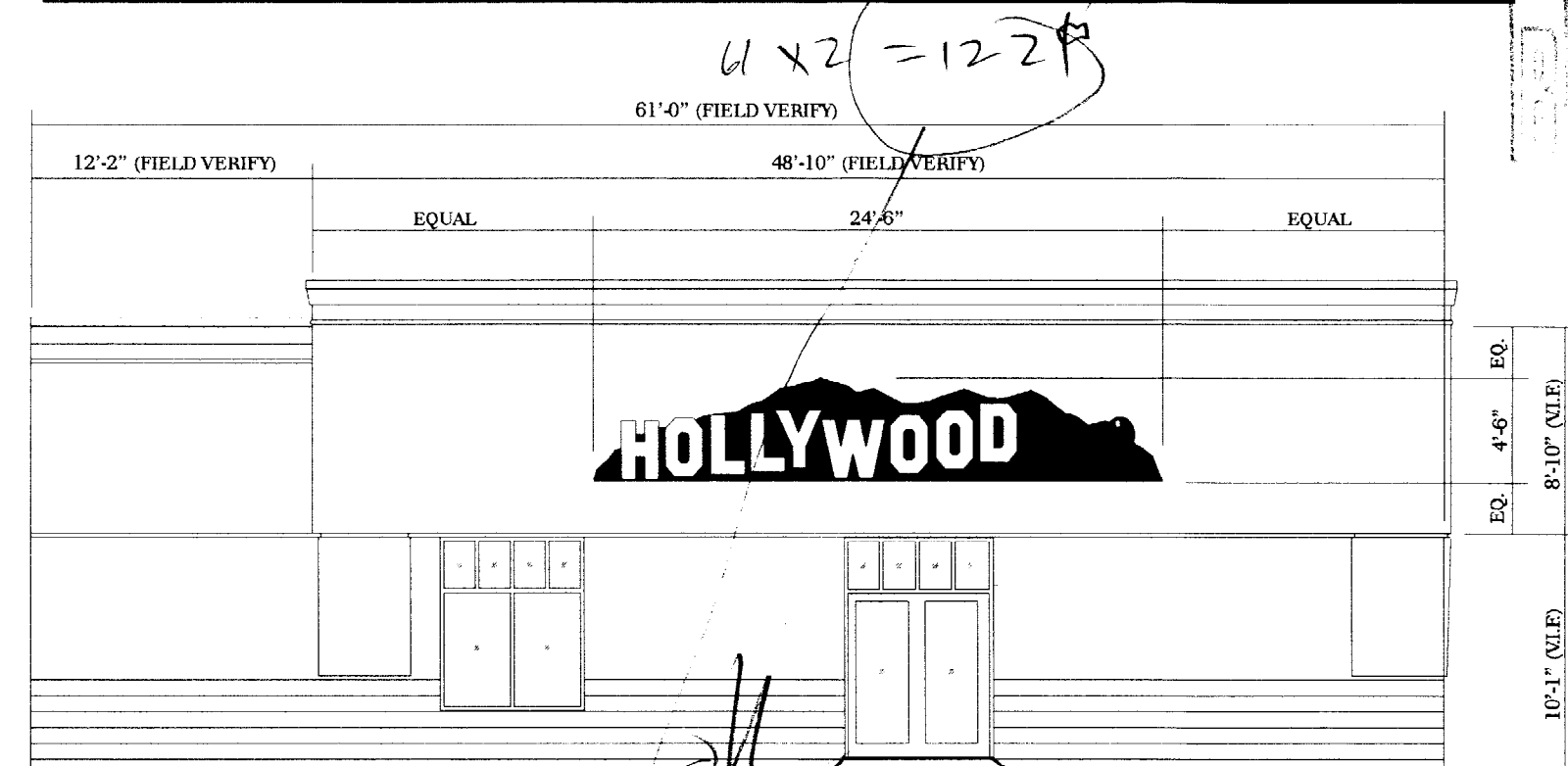


STOREFRONT ELEVATION
 SCALE: 3/32" = 1'-0"
 ALLOWABLE SIGN AREA = 220 S. F.
 ACTUAL SIGN AREA = 218.99 S. F. (6.003' x 36')

110.75 x 2 = 221.5 # MAX
[Handwritten signature]

HOLLYWOOD VIDEO
 PORTLAND, ME.

30" 'HOLLYWOOD' 15" 'VIDEO' TYPICAL CHANNEL STYLE LETTERS
 'HOLLYWOOD' TO HAVE #7328 WHITE PLEXI FACE, 'VIDEO' TO HAVE
 #2793 RED PLEXI FACE. BOTH SETS OF LETTERS TO HAVE BLACK
 RETURNS & TRIM, BOTH SETS TO BE MOUNTED ON CENTER RACEWAYS.
 LETTERS MOUNTED ON 1/8" ALUM 'MOUNTAIN' PANEL PAINTED (SW P-36)
 W/ BLUE & RED EXPOSED NEON STRIPES RUNNING ALONG TOP OF PANEL.
 PANEL TO BE SET OFF WALL W/ SPECIAL ALUM. SPACER RACEWAY W/
 ANGLE IRON FRAME. PANEL TO BE BACKLIT W/ WHITE NEON TUBING.



LEFT SIDE ELEVATION

SCALE : 1/8" = 1'-0"

ALLOWABLE SIGN AREA = 120 S. F.
 ACTUAL SIGN AREA = 110.25 S. F. (4.5' x 24.5')

DEPT. OF BUILDING INSPECTION
 CITY OF PORTLAND, ME

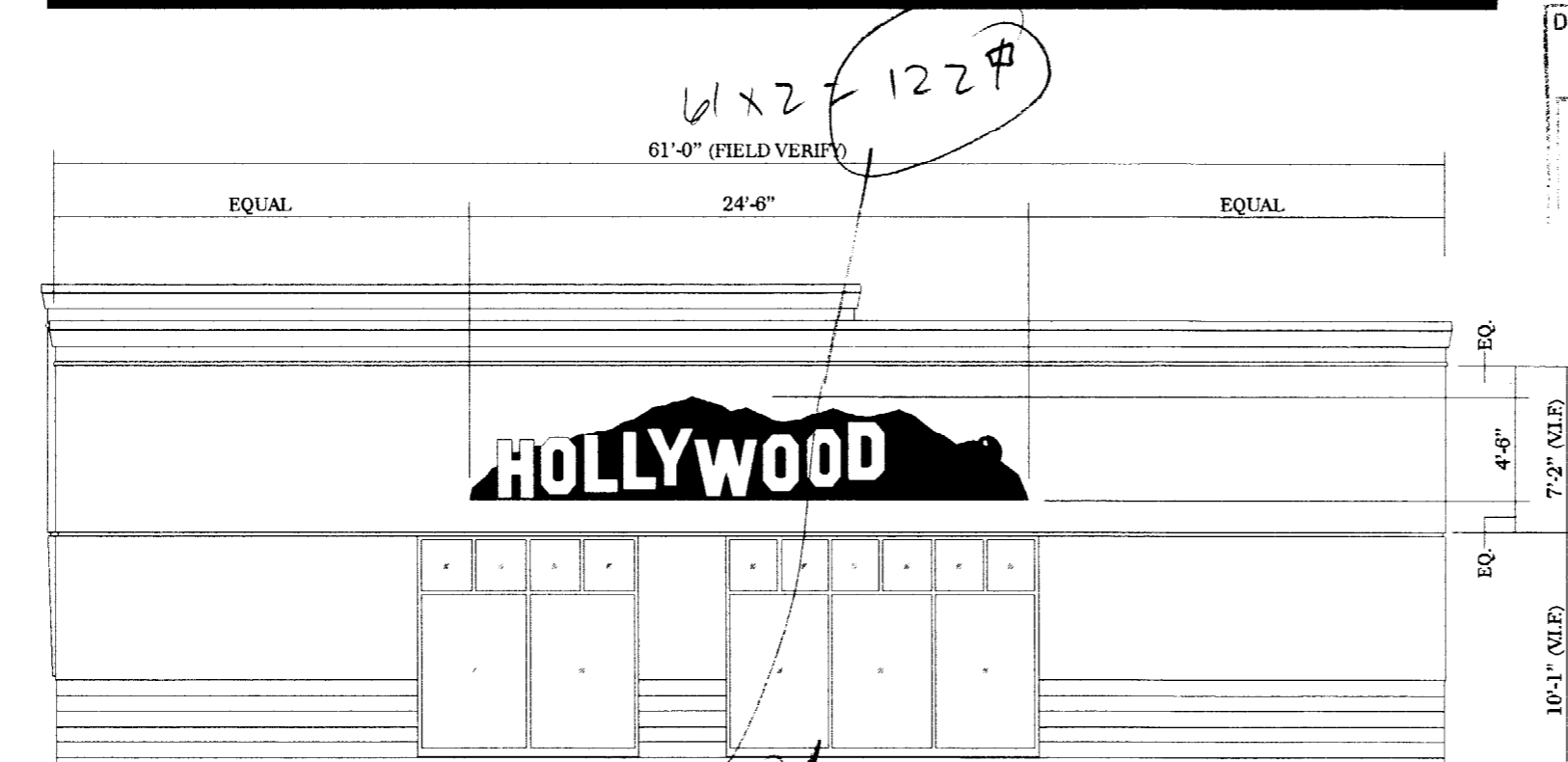
MAR - 8 2004

RECEIVED

REV. # 1	DATE: 1/7/2004	BY: KF	DRW DATE:	S.D. #2
REV. # 2	DATE: 2/9/2004	BY: KF	12 - 30 - 2003	OPTION #1
REV. # 3	DATE: 2/11/2004	BY: KF	SALESMAN	AF
				DRAWN BY
				K. E.

HOLLYWOOD VIDEO
 PORTLAND, ME.

30" 'HOLLYWOOD' 15" 'VIDEO' TYPICAL CHANNEL STYLE LETTERS
 'HOLLYWOOD' TO HAVE #7328 WHITE PLEXI FACE, 'VIDEO' TO HAVE
 #2793 RED PLEXI FACE. BOTH SETS OF LETTERS TO HAVE BLACK
 RETURNS & TRIM, BOTH SETS TO BE MOUNTED ON CENTER RACEWAYS.
 LETTERS MOUNTED ON 1/8" ALUM 'MOUNTAIN' PANEL PAINTED (SW P-36)
 W/ BLUE & RED EXPOSED NEON STRIPES RUNNING ALONG TOP OF PANEL.
 PANEL TO BE SET OFF WALL W/ SPECIAL ALUM. SPACER RACEWAY W/
 ANGLE IRON FRAME. PANEL TO BE BACKLIT W/ WHITE NEON TUBING.



RIGHT SIDE ELEVATION

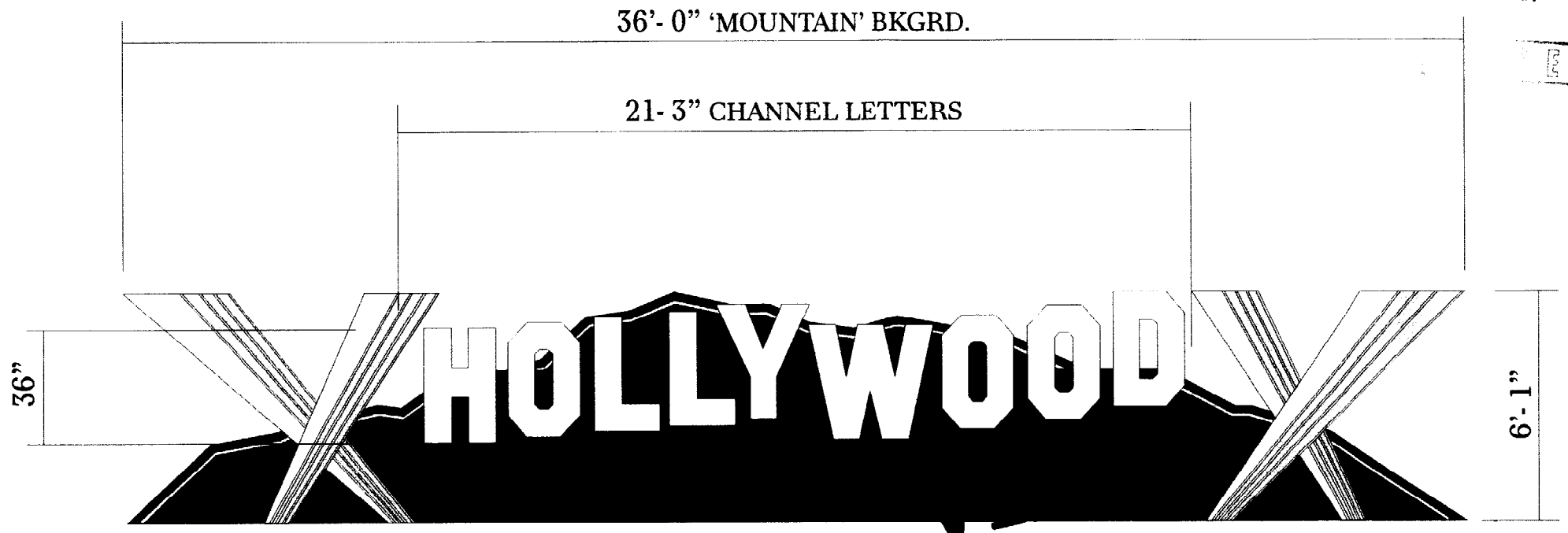
SCALE: 1/8" = 1'-0"

ALLOWABLE SIGN AREA = 120 S. F.
 ACTUAL SIGN AREA = 110.25 S. F. (4.5' x 24.5')

DEPT. OF BUILDING INSPECTION
 CITY OF PORTLAND
MAR - 8 2004
 RECEIVE

REV #1	DATE: 1/7/2004	BY: KF	SALESMAN	S.D. #3
REV #2	DATE: 2/9/2004	BY: KF	AF	OPTION #1
REV #3	DATE: 2/11/2004	BY: KF		DRAWN BY
HOLLYWOOD VIDEO PORTLAND, ME.				K. F.

36" 'HOLLYWOOD', 24" 'VIDEO'. TYPICAL CHANNEL STYLE LETTERS
 'HOLLYWOOD' TO HAVE #7328 WHITE PLEXI FACE, 'VIDEO' TO HAVE
 #2793 RED PLEXI FACE. BOTH SETS OF LETTERS TO HAVE BLACK
 RETURNS & TRIM, BOTH SETS TO BE MOUNTED ON CENTER RACEWAYS.
 LETTERS CENTERED OVER CUSTOM 'MOUNTAIN' BACKGROUND PTD.
 (SW P-36) W/ BLUE & RED EXPOSED NEON STRIPES TO RUN ALONG TOP



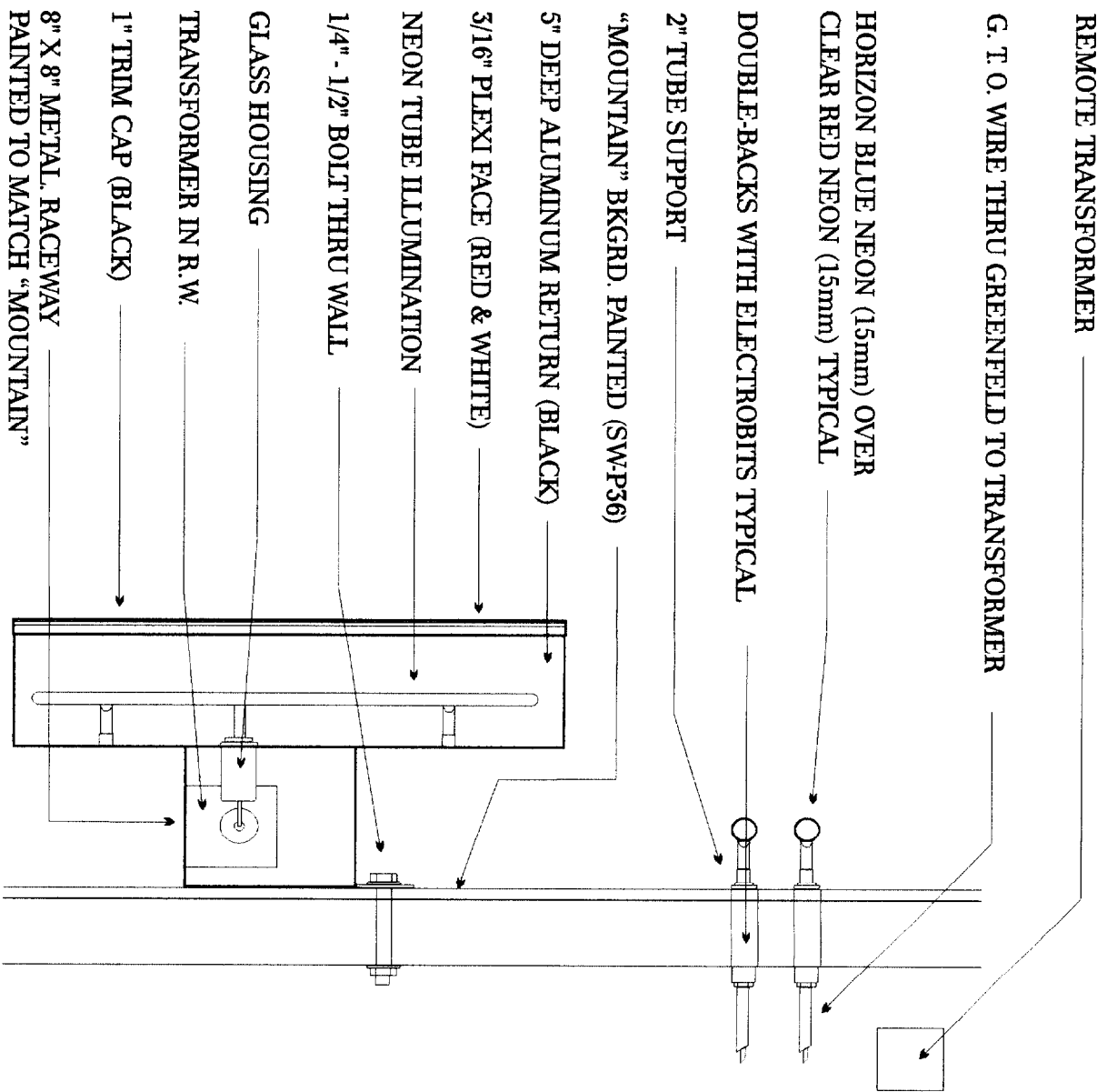
FRONT SIGN ELEVATION

ALLOWABLE Sqft: 220.0 Sqft.
 ACTUAL Sqft: 218.99 Sqft.

SCALE: 1/4" = 1'

BUILDING DEPARTMENT
 CITY OF PORTLAND, ME
 MAR - 8 2004
 FIVE

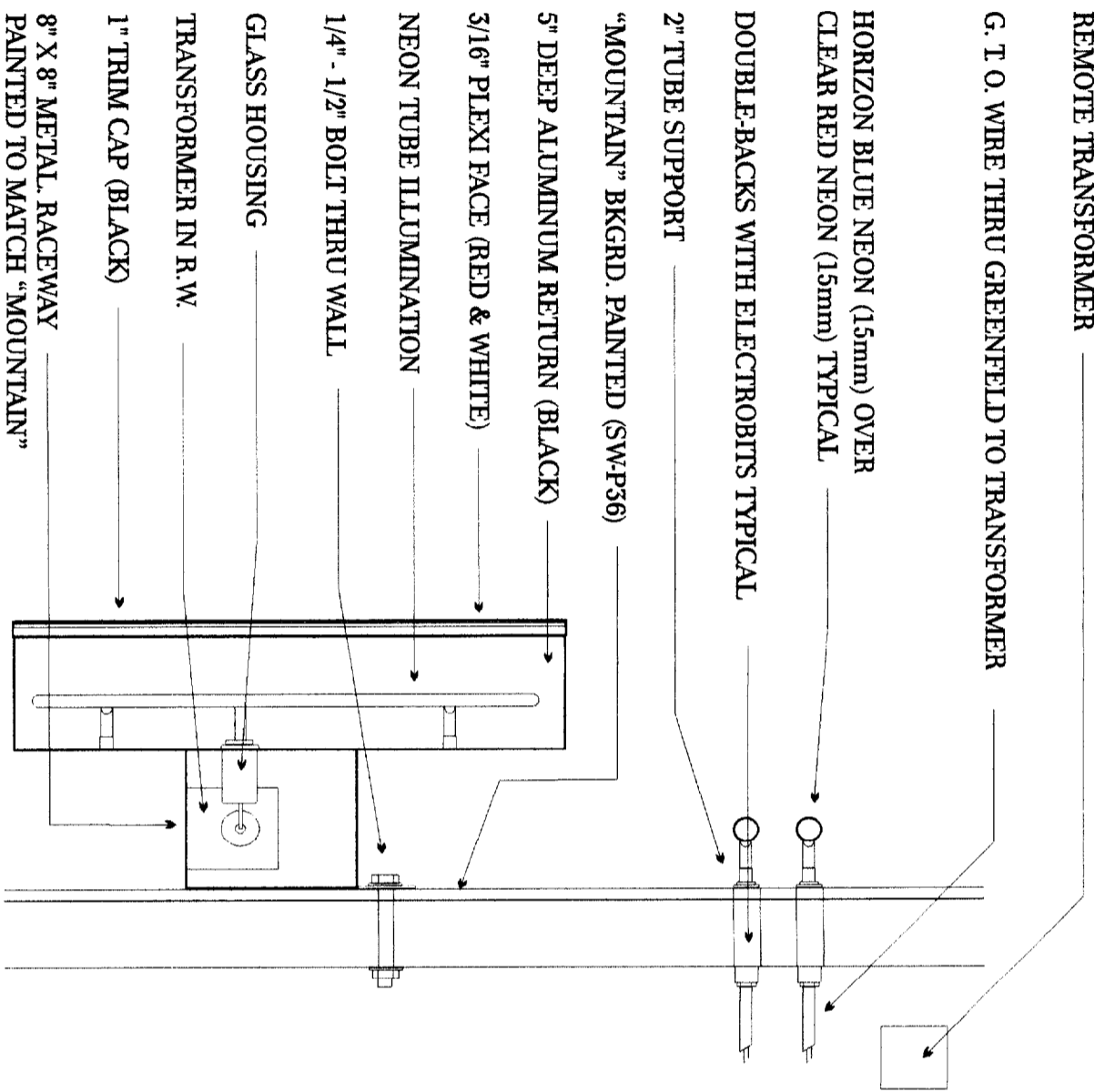
REV #1	DATE: 1/7/2004	BY: KF	SALESMAN	S.D. #4
REV #2	DATE: 2/9/2004	BY: KF	AF	OPTION #1
REV #3	DATE: 2/11/2004	BY: KF		DRAWN BY
HOLLYWOOD VIDEO PORTLAND, ME.				K. F.



STOREFRONT SIGN SECTION

CITY OF BUILDING INSPECTION
 CITY OF PORTLAND, ME
 MAR - 8 2004
 E I V E

HOLLYWOOD VIDEO PORTLAND, ME.	REV # 1	DATE: 1/7/2004	BY: KF	DRW DATE	S.D. #6
	REV # 2	DATE: 2/9/2004	BY: KF	12 - 30 - 2003	OPTION #1
	REV # 3	DATE: 2/11/2004	BY: KF	SALESMAN	DRAWN BY
			AF	K. F.	

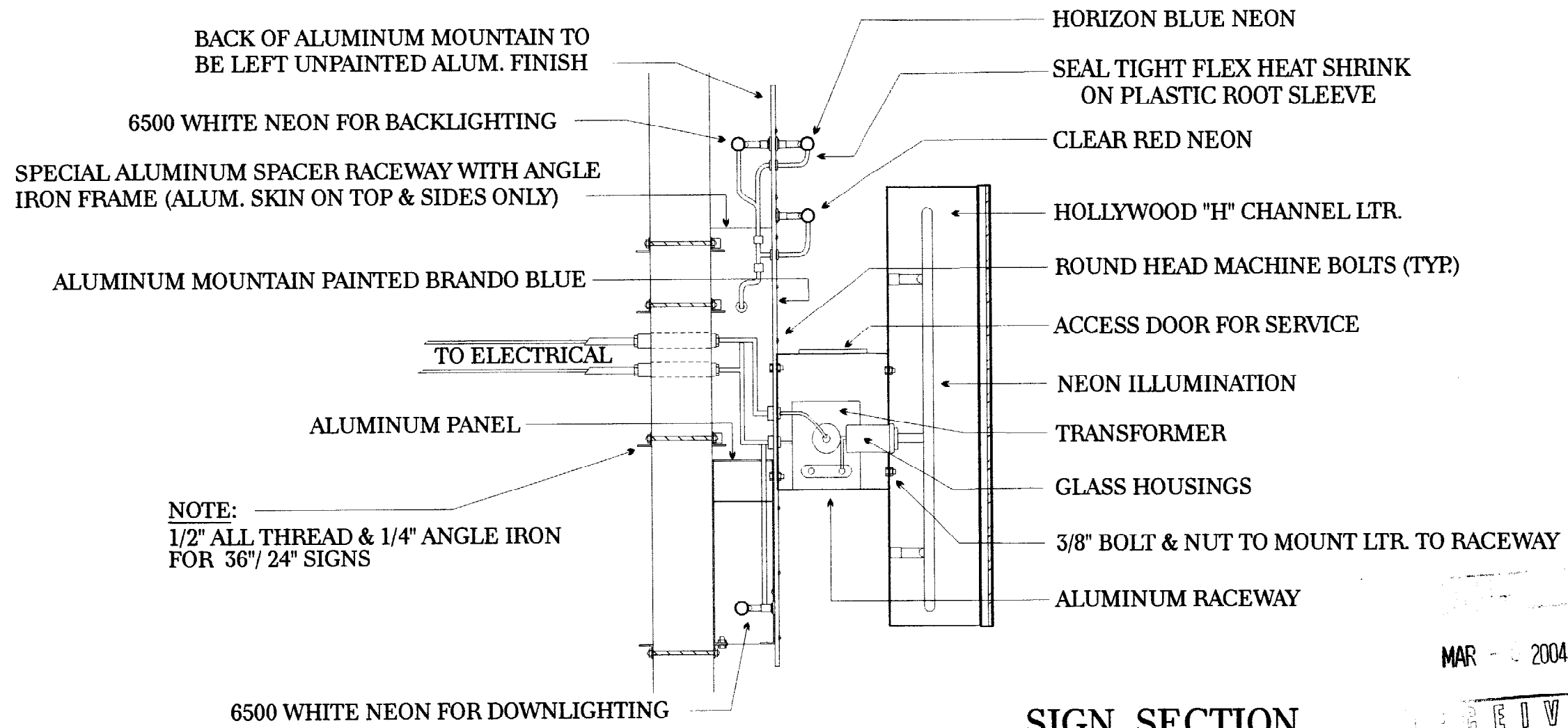


STOREFRONT SIGN SECTION

RECEIVED
 MAR - 8 2004
 RECEIVING DEPARTMENT
 CITY OF PORTLAND, ME

HOLLYWOOD VIDEO
 PORTLAND, ME.

REV. # 1	DATE: 1/7/2004	BY: KF	DRW DATE	S.D. #6
REV. # 2	DATE: 2/9/2004	BY: KF	12 - 30 - 2003	OPTION #1
REV. # 3	DATE: 2/11/2004	BY: KF	SALESMAN	DRAWN BY
			AF	K. F.



BACK OF ALUMINUM MOUNTAIN TO BE LEFT UNPAINTED ALUM. FINISH

6500 WHITE NEON FOR BACKLIGHTING

SPECIAL ALUMINUM SPACER RACEWAY WITH ANGLE IRON FRAME (ALUM. SKIN ON TOP & SIDES ONLY)

ALUMINUM MOUNTAIN PAINTED BRANDO BLUE

TO ELECTRICAL

ALUMINUM PANEL

NOTE:
1/2" ALL THREAD & 1/4" ANGLE IRON FOR 36"/ 24" SIGNS

6500 WHITE NEON FOR DOWNLIGHTING

HORIZON BLUE NEON

SEAL TIGHT FLEX HEAT SHRINK ON PLASTIC ROOT SLEEVE

CLEAR RED NEON

HOLLYWOOD "H" CHANNEL LTR.

ROUND HEAD MACHINE BOLTS (TYP)

ACCESS DOOR FOR SERVICE

NEON ILLUMINATION

TRANSFORMER

GLASS HOUSINGS

3/8" BOLT & NUT TO MOUNT LTR. TO RACEWAY

ALUMINUM RACEWAY

SIGN SECTION

(PAINT RACEWAY TO MATCH STOREFRONT FASCIA COLOR)
('HOLLYWOOD' - WHITE FACES) ('VIDEO' - RED FACES)
(TRIM CAPS & RETURNS TO BE A BLACK FINISH)

MAR - 2004

RECEIVED

REV # 1	DATE: 1/7/2004	BY: KF	DRW DATE	S.D. #7
REV # 2	DATE: 2/9/2004	BY: KF	12 - 30 - 2003	OPTION #1
REV # 3	DATE: 2/11/2004	BY: KF	SALESMAN	DRAWN BY
HOLLYWOOD VIDEO PORTLAND, ME.			AF	K.F.