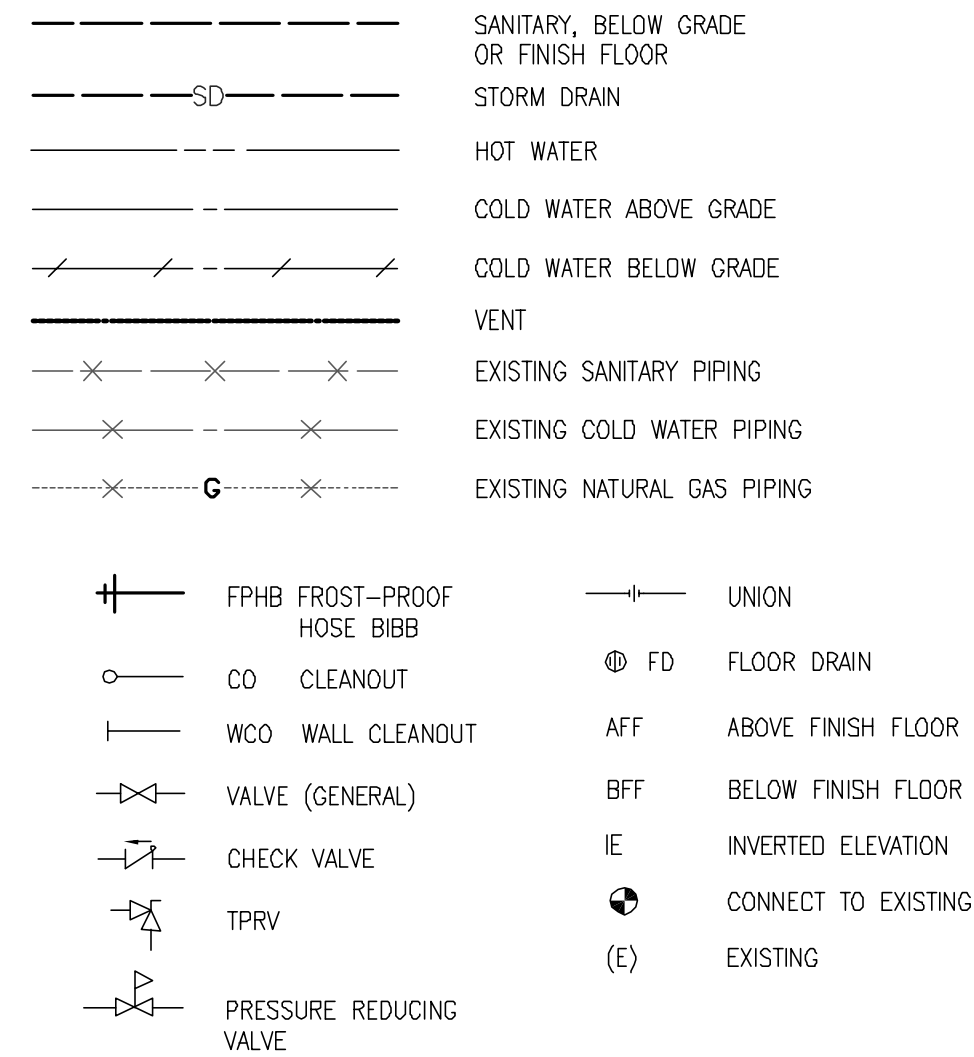


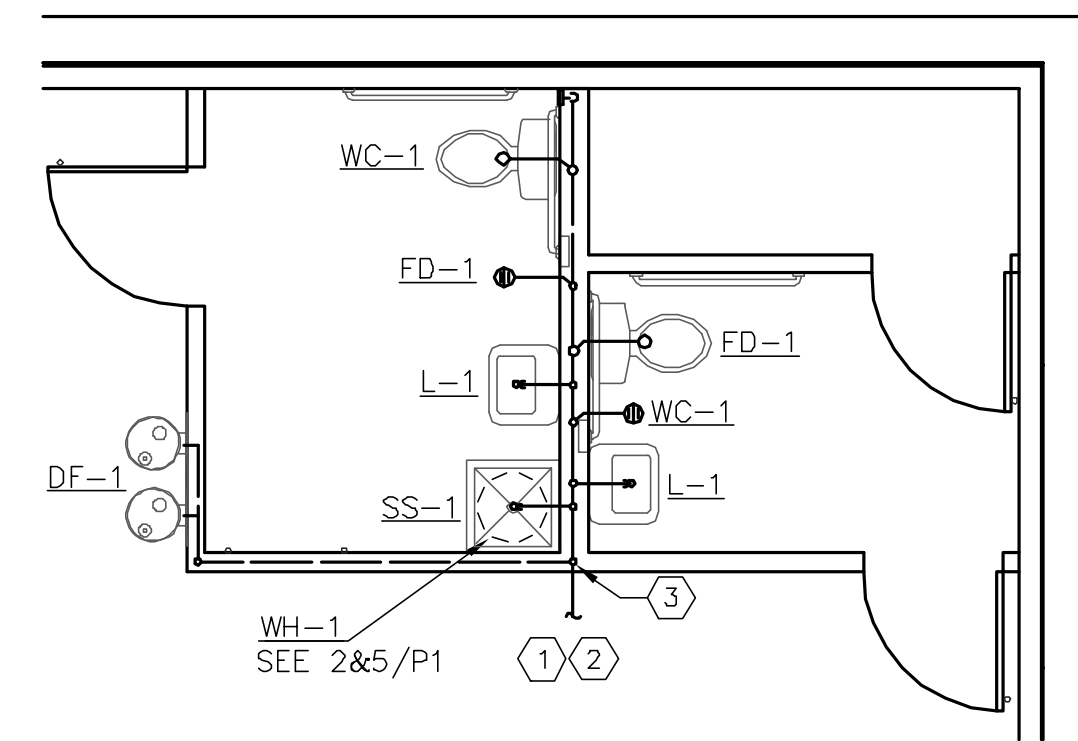
PLUMBING FIXTURE SCHEDULE

SYMBOL	DESCRIPTION	CONNECTION SIZE			
		W	V	CW	HW
DF-1	DRINKING FOUNTAIN: WALL HUNG, HEAVY GAUGE STEEL CABINET, STAINLESS STEEL, WALL SUPPORT PLATE. ELKAY EDFF-117-C. FITTINGS: P-TRAP, SUPPLY AND STOP. REMARKS: SEE ARCHITECTURAL FOR INSTALLATION HEIGHT.	1-1/2"	1-1/2"	1/2"	---
ET-1	EXPANSION TANK: WELDED STEEL CONSTRUCTION, DIAPHRAGM TYPE, SEPARATE WATER RESERVOIR, PRE-PRESSURIZED, IAPMO CERTIFIED/APPROVED. AMTROL ST-5. REMARKS: INSTALL PER MANUFACTURER'S RECOMMENDATIONS.	---	---	3/4"	---
FD-1	FLOOR DRAIN: CAST-IRON BODY WITH ADJUSTABLE ROUND POLISHED NICKEL BRONZE TOP. STRAINER DIAMETER 6 IN. VANDAL-PROOF SCREWS. TRAP PRIMER CONNECTION. PROVIDE WITH P-TRAP. JR SMITH 2005A. REMARKS: PRIME AS REQUIRED BY LOCAL CODE.	2"	2"	---	---
FPHB-1	FROST-PROOF HOSE BIBB: WALL HYDRANT, NON-FREEZE, EXPOSED, BRONZE HYDRANT WITH CHROME PLATED FACE, BRONZE CASING, HOSE CONNECTION WITH INTEGRAL VACUUM BREAKER, "1" HANDLE KEY, LENGTH AS REQUIRED BY WALL THICKNESS. J.R.SMITH 5609QT	---	---	3/4"	---
L-1	LAVATORY: VITREOUS CHINA, 15 IN. BY 10 IN. BOWL SIZE, SINGLE CENTER FAUCET HOLE. AMERICAN STANDARD 0356.421. FAUCET: SINGLE LEVER HANDLE, LAVATORY FAUCET, POLISHED CHROME FINISH, HOT WATER LIMIT SAFETY STOP, VANDAL-RESISTENT AERATOR, GRID DRAIN, ESCUTCHEON PLATE. AMERICAN STANDARD 2000.100. FITTINGS: 1-1/4"x1-1/2" P-TRAP, SUPPLIES, STOPS AND WALL HANGER. REMARKS: PROVIDE INSULATION ON WASTE AND HOT WATER SUPPLY, OFFSET WASTE FITTINGS AS REQUIRED. MOUNTING HEIGHT FOR HANDICAPPED.	1-1/2"	1-1/2"	1/2"	1/2"
SS-1	SERVICE SINK: FLOOR-MOUNTED, 24"x24"x10", MOLDED ACRYLIC, STAINLESS STEEL STRAINER. FIAT MSB-2424. FAUCET: HOSE END SPOUT TYPE WITH INTEGRAL VACUUM BREAKER, ADJUSTABLE ARMS WITH INTEGRAL STOPS AND WALL BRACE. CHICAGO 897	3"	2"	1/2"	1/2"
WC-1	WATER CLOSET: FLOOR MOUNTED, 1.6 GPF, TANK TYPE, ELONGATED BOWL, VITREOUS CHINA, SIPHON JET ACTION, BOLT CAPS, SUPPLY AND STOP. AMERICAN STANDARD 2216.143. SEAT: OPEN FRONT, COMMERCIAL WEIGHT HEAVY-DUTY PLASTIC, STAINLESS STEEL CHECK HINGE, WHITE, WITHOUT COVER. CHURCH 9500C	4"	2"	1/2"	---
WH-1	WATER HEATER: ELECTRIC, 6 GALLON, SINGLE ELEMENT, 1.5 KW, 8 GPH AT 80F RISE. DRAIN VALVE, T & P VALVE, 137 POUNDS (WET). AD SMITH DEL-6. REMARKS: COORDINATE EXACT ELECTRICAL CHARACTERISTICS WITH ELECTRICAL CONTRACTOR PRIOR TO PURCHASE. SET WATER TEMPERATURE AT 110F.	---	---	3/4"	3/4"



NOTE: INSTALL ALL PLUMBING FIXTURES TO BE FULLY ACCESSIBLE TO INDIVIDUALS WITH DISABILITIES IN ACCORDANCE WITH THE AMERICANS WITH DISABILITIES ACT OF 1990 (ARCHITECTURAL GUIDELINES). FIXTURES AND THEIR INSTALLATION SHALL ALSO COMPLY WITH AMERICAN NATIONAL STANDARDS INSTITUTE (ANSI) PUBLICATION A117.1 - "PROVIDING ACCESSIBILITY AND USABILITY FOR PHYSICALLY HANDICAPPED PEOPLE" AND/OR GOVERNING CODES. - ALL PLUMBING FIXTURES EQUIPMENT, TRIM, & FITTINGS SHALL COMPLY WITH LOCAL, STATE, AND FEDERAL REGULATIONS AND CODES, INCLUDING, BUT NOT LIMITED TO, WATER AND ENERGY CONSERVATION CODES. THE SCHEDULED AND/OR SPECIFIED PLUMBING FIXTURES AND EQUIPMENT REPRESENT THE MINIMUM CRITERIA AND SHALL BE THE BASIS FOR THE CONTRACTOR'S BASE BID. IF THE SCHEDULED OR SPECIFIED FIXTURES OR EQUIPMENT DO NOT COMPLY WITH GOVERNING CODES OR REGULATIONS IN ALL RESPECTS, THE CONTRACTOR SHALL PROVIDE AN ALTERNATE BID FOR COMPLYING FIXTURES, EQUIPMENT, TRIM, OR FITTINGS. THE ABSENCE OF AN ALTERNATE BID SHALL BE CONSTRUED TO MEAN THAT THE CONTRACTOR'S BID INCLUDES ALL COSTS NECESSARY TO MEET ALL REGULATIONS & CODES.

ALL PIPING BELOW LAVATORY SHALL BE INSULATED WITH TRUEBRO LAV GUARDS AND CONFIGURED TO PROTECT AGAINST CONTACT. THERE SHALL BE NO SHARP OR ABRASIVE SURFACES UNDER LAVATORY.



PLUMBING FIXTURE SCHEDULE

DOMESTIC WATER SIZING

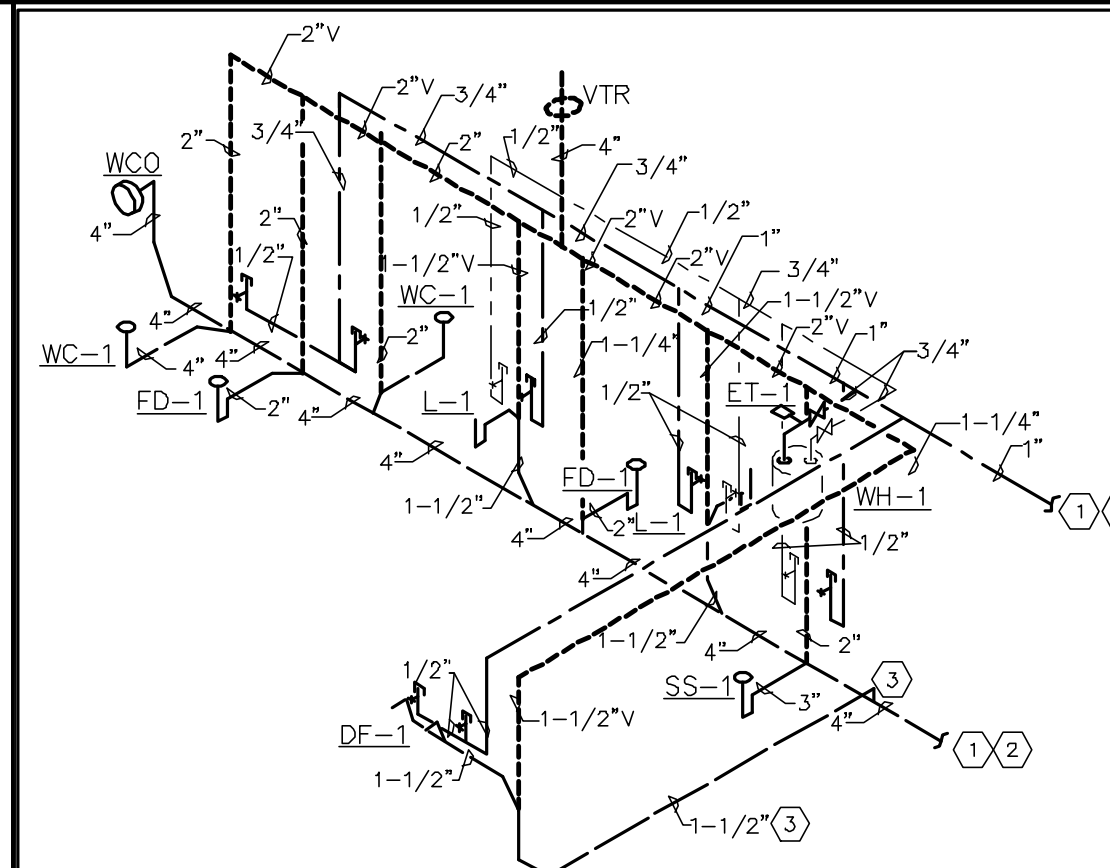
FIXTURE	UNIT	COUNT	(WATER)
2 WC-1	@ 4 FU	=	8 FU
1 SS-1	@ 3 FU	=	3 FU
2 L-1	@ 1 FU	=	2 FU
1 DF-1	@ .75 FU	=	.75 FU
1 HB-1	@ 2.5 FU	=	2.5 FU
1 HB-1	@ 1 FU	=	1 FU
			17.25 FU

TENANT SPACE SUPPLY = 1" VERIFY

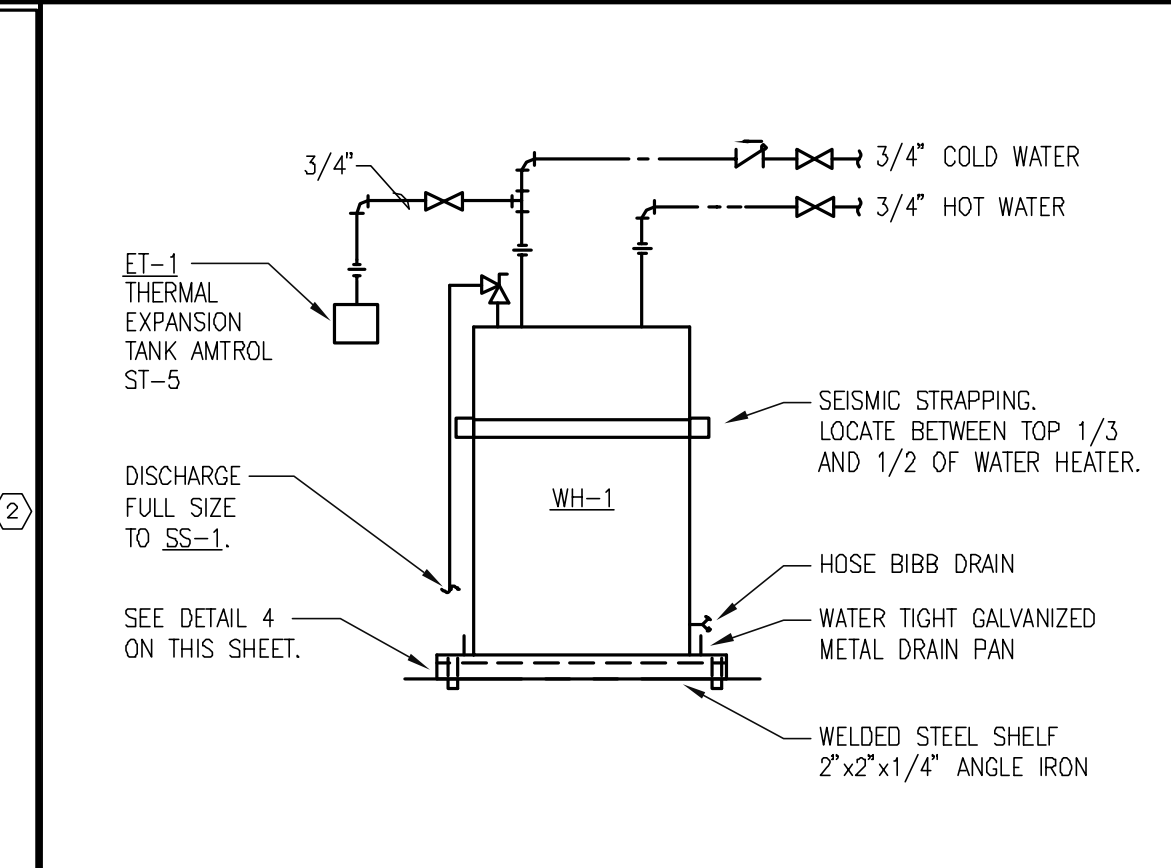
PLUMBING SYMBOL LEGEND

- CONDITIONS SHOWN ON THE PLANS RELATIVE TO THE WORK TO BE PERFORMED ARE BASED ON THE BEST INFORMATION AVAILABLE BUT ARE SUBJECT TO VERIFICATIONS. VERIFY LOCATIONS AND ELEVATIONS OF UTILITIES TO BE CROSSED OR CONNECTED. CORRECT DEFICIENCIES CAUSED BY FAILURE TO PERFORM SUCH VERIFICATIONS AT NO EXPENSE TO THE TENANT. IMMEDIATELY NOTIFY ARCHITECT AND ENGINEER OF CONDITION IN CONFLICT WITH THE PLAN.
- PROVIDE PIPING, EQUIPMENT AND MATERIALS IN ACCORDANCE WITH APPLICABLE PLUMBING CODE REGULATIONS, STANDARDS, AUTHORITY HAVING JURISDICTION REQUIREMENTS.
- COORDINATE INSTALLATION OF PIPING, FIXTURES, EQUIPMENT, ETC. WITH ARCHITECTURAL, STRUCTURAL, MECHANICAL, ELECTRICAL, FIRE PROTECTION SYSTEMS AND OTHER SYSTEM INSTALLATIONS.
- DO NOT SCALE THESE DRAWINGS TO OBTAIN LOCATION OF FIXTURES, DRAINS, EQUIPMENT, RISERS, ETC. REFER TO ARCHITECTURAL PLAN FOR EXACT LOCATION OF DOWNS POUTS AND EQUIPMENT.
- VERIFY AND COORDINATE EXACT LOCATION OF ALL CONNECTIONS TO PIPING INSTALLED BY SITE CONTRACTOR. COORDINATE WITH FINISH GRADE.
- PROVIDE CLEAN OUTS FOR SANITARY, WASTE AND STORM DRAINAGE SYSTEMS WHERE ILLUSTRATED AND AS OTHERWISE REQUIRED BY CODE.
- REFER TO MECHANICAL SPECIFICATIONS FOR SEISMIC RESTRAINT REQUIREMENTS FOR ALL MECHANICAL PIPING AND EQUIPMENT.

PLUMBING PLAN



ELECTRIC WATER HEATER



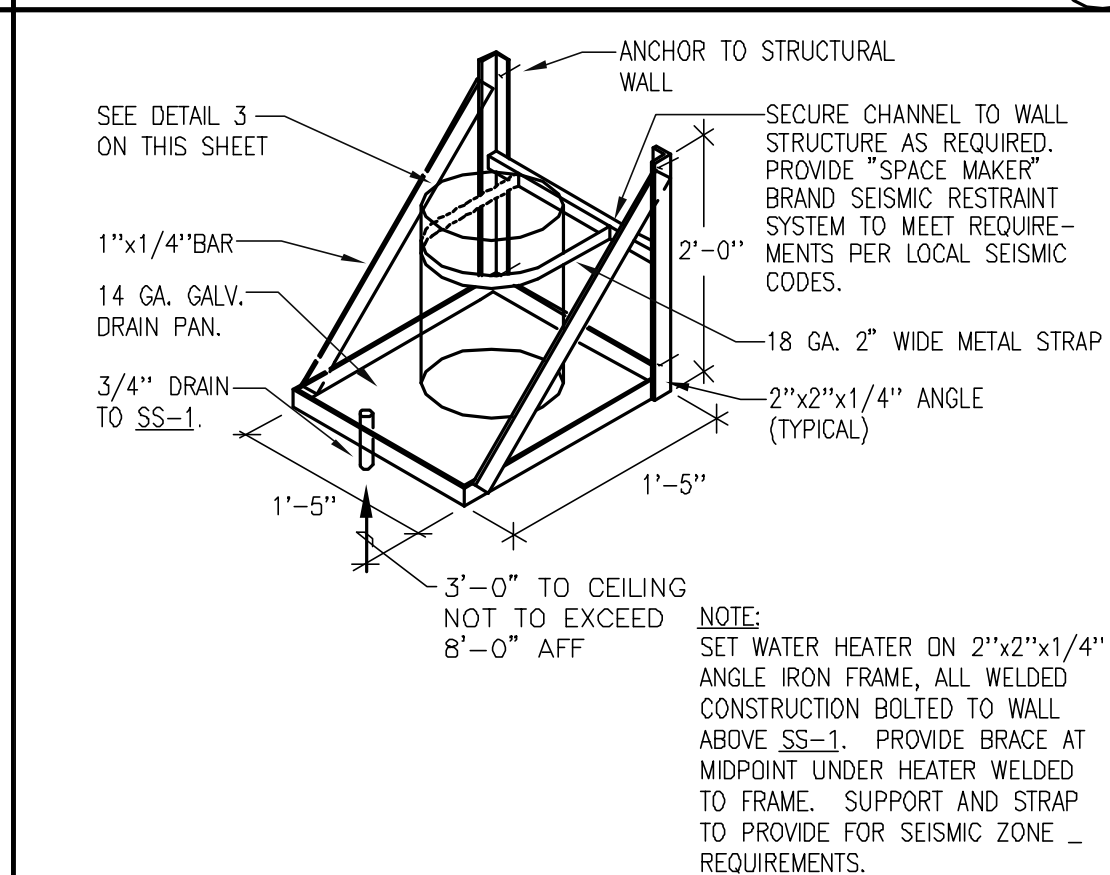
WATER CALCULATIONS

NOT USED

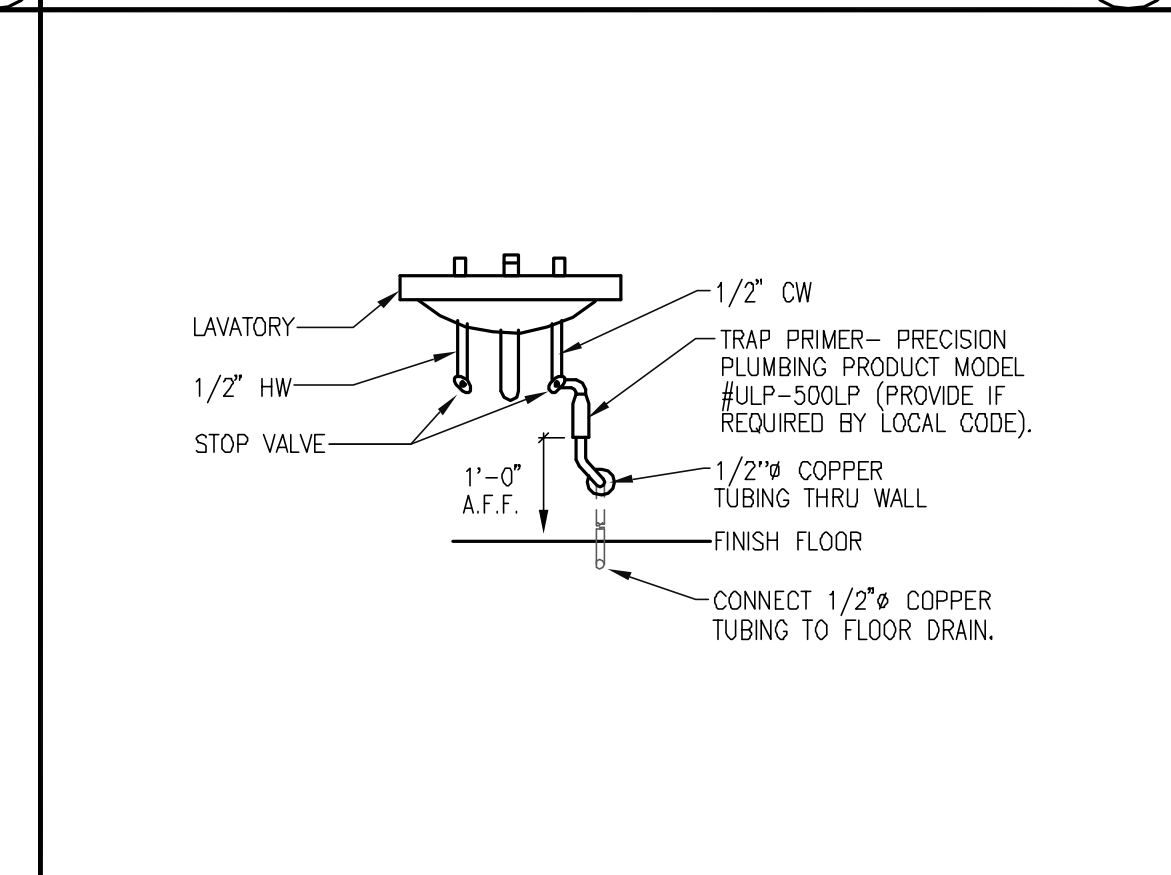
GENERAL

- VERIFY LOCATION AND SIZE OF EXISTING SHELL SANITARY AND DOMESTIC WATER PIPING FOR CONNECTION TO NEW PIPING IN FIELD PRIOR TO CONSTRUCTION. NOTIFY ARCHITECT IF EXISTING PIPE SIZES ARE SMALLER THAN THE NEW PIPING TO BE CONNECTED.
- SEE PLUMBING PLAN ON SHEET P2 FOR CONTINUATION.
- 1-1/2" DRAIN FROM DF-1 RUN IN WALL ABOVE GRADE. DROP AND TIE IN TO 4" SAN. AS INDICATED

WATER HEATER SUPPORT



TRAP PRIMER DETAIL



NOT USED

NOT USED

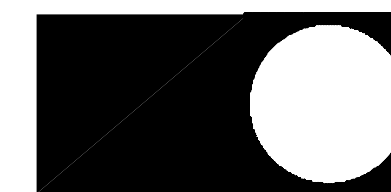
KEYED NOTES

WATER HEATER SUPPORT

TRAP PRIMER DETAIL

HOLLYWOOD VIDEO

9275 S.W. PEYTON LANE
WILSONVILLE, OREGON 97070
PHONE (503) 570-1800



CASCO
10877 WATSON ROAD
ST. LOUIS, MO 63127
PROJECT MANAGERS

The professional of record is practicing as an individual.

JAMES C. ALBERTS
PROFESSIONAL OF RECORD
PHONE: 314-921-1100
LICENSE NO. 6691

REVISIONS:

PROJECT: 304121

PORTLAND/MARGINAL WAY
160 PREBLE STREET
PORTLAND, ME 04104
STORE #019101

SHEET TITLE
PLUMBING PLAN & DETAILS

TEMPLATE: 2003.2
DESIGN CONSTRUCTION BULLETIN:
DRAWN BY: MAT
CHECKED BY: FJN
SCALE: AS NOTED
DATE: 03-12-04

SHEET NO. P1