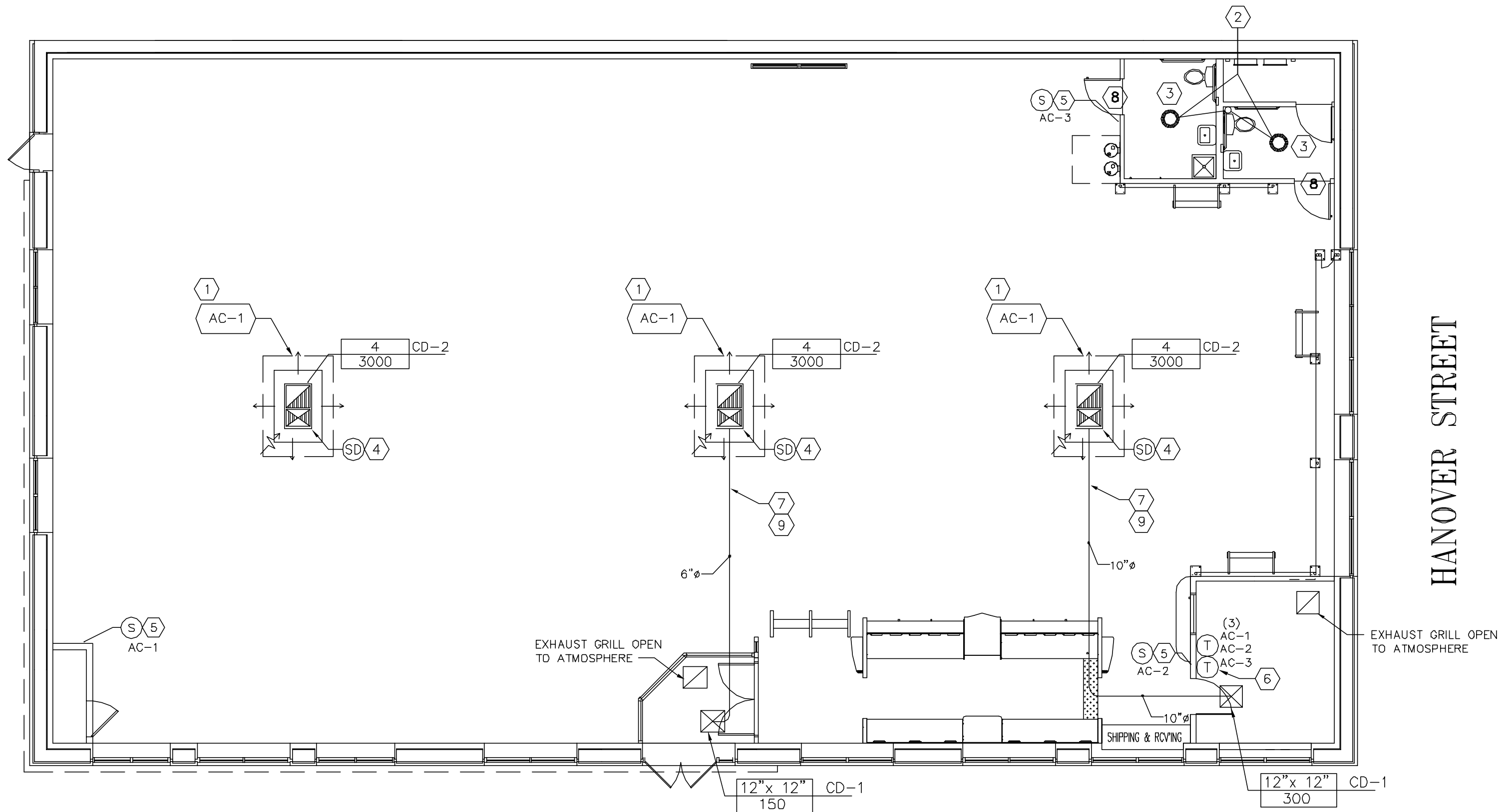


- HOLLYWOOD ENTERTAINMENT HAS A NATIONAL ACCOUNT AGREEMENT WITH CARRIER INDUSTRIES TO PROVIDE THE SCHEDULED EQUIPMENT. PURCHASE, INSTALLATION, AND STARTUP SHALL BE BY THE MECHANICAL CONTRACTOR. ALL ACCESSORIES, UNLESS SPECIFICALLY STATED, SHALL BE INSTALLED BY THE MECHANICAL CONTRACTOR. THE MECHANICAL CONTRACTOR SHALL VERIFY VOLTAGE PRIOR TO PLACING AN ORDER FOR THIS EQUIPMENT. CONTACT LOCAL CARRIER DISTRIBUTION FOR PRICING.
- LANDLORD TO PROVIDE "MECHANICAL" REQUIREMENTS PER SUPPLY/INSTALLATION SCHEDULE.
- COORDINATE/VERIFY LAYOUT OF EQUIPMENT, DUCTS, PIPING, AND ALL REQUIRED SERVICE 3. CLEARANCES WITH STRUCTURE/EXISTING CONDITIONS AND ALL OTHER TRADES PRIOR TO ROUGH-IN. PROVIDE DUCT OFFSETS AS REQUIRED.
- COORDINATE ALL DUCTWORK, GRILLES AND DIFFUSERS WITH THE STRUCTURE, REFLECTED CEILING PLAN, LIGHTING LAYOUT AND FIRE SPRINKLER SYSTEM.
- COORDINATE CEILING SOFFITS AND DUCT CHASE SIZES AND LOCATIONS WITH ARCHITECT.
- ALL HVAC CONTROL AND COMPONENT SYSTEMS TO BE INSTALLED BY MECHANICAL CONTRACTOR PER SPECIFICATION SECTION 15950. COORDINATE CONNECTION OF THERMOSTATS TO LIGHTING CONTROL AND ALARM PANEL WITH LIGHTING VENDOR AND ELECTRICAL CONTRACTOR. SENSORS AND THERMOSTATS ARE TO BE INSTALLED TO LOCATIONS SHOWN ON SHEET M1.
- PROVIDE CONDENSATE TRAPS ON ALL AIR CONDITIONING COOLING COILS. ROUTE DRAIN PIPE TO CODE APPROVED LOCATION.
- MOUNT ALL ROOM TEMPERATURE SENSORS AT +48" AFF. ALTERNATE LOCATION FOR TEMPERATURE SENSORS SHALL BE IN THE RETURN AIR DUCT AND/OR PLENUM WHEN NOTED LOCATIONS DO NOT APPLY TO FIELD CONDITIONS. VERIFY WITH HOLLYWOOD VIDEO CONSTRUCTION MANAGER PRIOR TO INSTALLATION.

- SUPPLY DUCT AND RETURN DUCT (VERIFY SIZES) THRU ROOF FROM EXISTING UNIT. CONNECT FULL SIZE TO UNIT TAPS. PROVIDE CONCENTRIC DIFFUSER INTO SPACE DIRECTLY BELOW EXISTING UNIT. COORDINATE INSTALLATION OF CONCENTRIC DIFFUSER WITH EXISTING STRUCTURAL. VERIFY EXACT LOCATION OF EXISTING DUCT DROPS WITH SHELL DOCUMENTS.
- ROUTE 6" EXHAUST DUCT UP TO ROOF CAP. TRANSITION AS REQUIRED.
- CEILING FAN TO BE PROVIDED AND MOUNTED BY ELECTRICAL. MECHANICAL CONTRACTOR TO CONNECT EXHAUST DUCTWORK TO EXHAUST FAN. VERIFY MODEL OF EXHAUST FAN WITH ELECTRICAL. VERIFY EXHAUST FAN CAPACITY OF 100 CFM FOR MENS RESTROOM AND 100 CFM FOR WOMENS RESTROOM
- SMOKE DETECTOR TO BE INSTALLED IN MAIN SUPPLY AIR DUCT DROP FROM ROOFTOP UNIT. VERIFY REQUIREMENTS OF SMOKE DETECTOR WITH LOCAL JURISDICTION.
- LOCATION OF ROOM TEMPERATURE SENSOR. COORDINATE LOCATION OF TEMPERATURE SENSOR WITH ARCHITECT.
- PROVIDE THERMOSTATS W/LOCKING COVERS IN OFFICE WITH REMOTE SENSORS MOUNTED IN SALES SPACE AS SHOWN ON PLANS. LABEL THERMOSTATS WITH RTU EQUIPMENT NUMBER. RE: 3/E1
- ROUTE ALL DUCTWORK AS HIGH AS POSSIBLE.
- VERIFY 3/8" UNDERCUT OF DOOR WITH GENERAL CONTRACTOR.
- ROUTE SUPPLY DUCTWORK FROM EXISTING SUPPLY DUCT/DROP.

PREBLE STREET



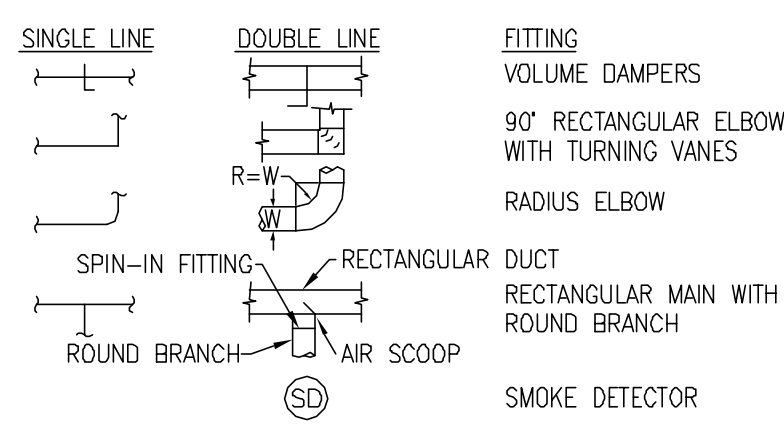
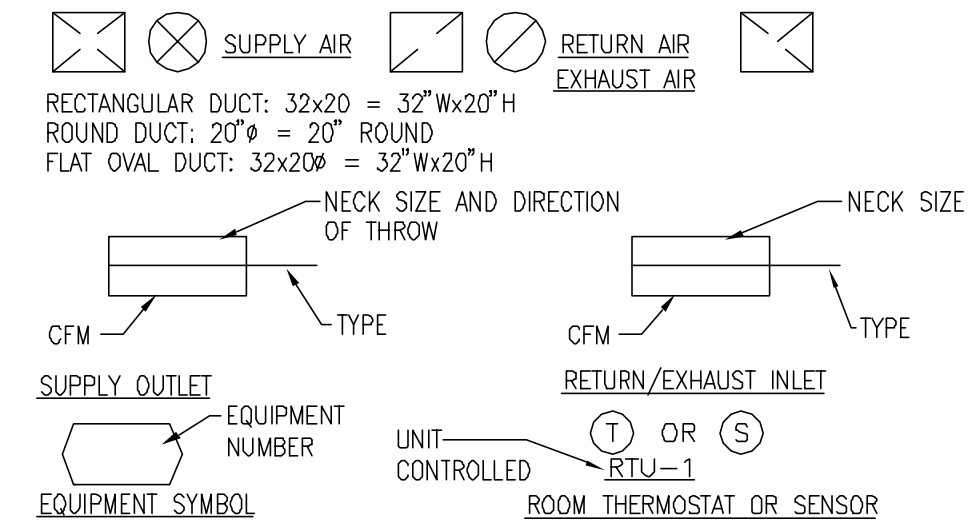
NOTE:
ALL HVAC DISTRIBUTION SYSTEM TO BE DONE AND PROVIDED BY LANDLORDS CONTRACTOR PER TENANT DESIGN

NOTE:
INFORMATION CONCERNING AIR CONDITIONING UNITS PROVIDED BY LANDLORD WAS NOT AVAILABLE AT TIME OF TENANT FINISH DESIGN. CONTRACTOR SHALL VERIFY ALL ASPECTS OF OPERATION FOR ALL EQUIPMENT. BALANCE UNITS TO INDICATED AIR QUANTITIES.

GENERAL NOTES

KEYED NOTES

3



MECHANICAL SYMBOL LEGEND

HVAC PLAN

1/8" = 1'-0" 1

VENTILATION CALCULATION

6,600 SF. X .30 CFM/SF. = 1980 CFM
1980 CFM ÷ 4 SYSTEMS = 495 CFM/SYSTEM
USE 495 CFM O.A. EACH SYSTEM

NOTE: CALCULATION BASED ON ASHRAE STANDARD 62-1989 VENTILATION FOR ACCEPTABLE INDOOR QUALITY, TABLE 2, "OUTDOOR AIR REQUIREMENTS FOR VENTILATION", "RETAIL STORES, SALES FLOORS, AND SHOW ROOM FLOORS", "BASEMENT AND STREET"

EQUIPMENT SCHEDULE (BY LANDLORD)

SYMBOL	MANUFACTURER	MODEL NUMBER	NOMINAL TONNAGE	SEER	CFM	EXTERNAL STATIC PRESSURE	COOLING CAPACITY			HEATING CAPACITY			ELECTRICAL				
							CONDENSER AMBIENT TEMP.	MIN. OUTDOOR AIR CFM	ENTERING AIR db/wb1	SENSIBLE CAPACITY	TOTAL CAPACITY	GAS INPUT (1ST/2ND STAGE)	GAS OUTPUT (1ST/2ND STAGE)	AFUE %	MCA	MCCP	VOLT
AC-1	SEE SHELL DRAWINGS	VERIFY	7-1/2 TON	VERIFY	3000	VERIFY	86	495	75/63	VERIFY	VERIFY	VERIFY	VERIFY	VERIFY	VERIFY	208/3Ø	VERIFY
AC-2	SEE SHELL DRAWINGS	VERIFY	7-1/2 TON	VERIFY	3000	VERIFY	86	495	75/63	VERIFY	VERIFY	VERIFY	VERIFY	VERIFY	VERIFY	208/3Ø	VERIFY
AC-3	SEE SHELL DRAWINGS	VERIFY	7-1/2 TON	VERIFY	3000	VERIFY	86	495	75/63	VERIFY	VERIFY	VERIFY	VERIFY	VERIFY	VERIFY	208/3Ø	VERIFY

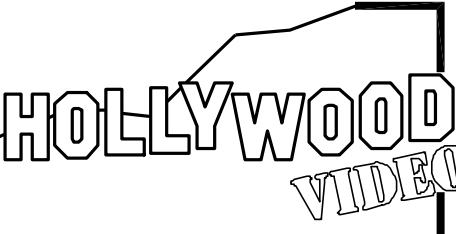
DIFFUSER, REGISTER AND GRILLE SCHEDULE (BY LANLORD)

SYMBOL	TYPE	FACE	FRAME	DAMPER	FINISH	MODEL NO.	REMARKS
CD-1	CEILING DIFFUSER	PERFORATED	SURFACE	VOLUME DAMPER	WHITE	TITUS TDC	COORDINATE DIFFUSER MANUFACTURER TO MATCH WITH EXISTING AC-UNIT MANUFACTURER. INSTALL PER MANUFACTURER'S RECOMMENDATIONS. BOTTOM OF CONCENTRIC DIFFUSER TO BE MOUNTED AT SAME HEIGHT AS BOTTOM OF LIGHT FIXTURES. COORDINATE WITH ARCHITECT AND ELECTRICAL.
CD-2	CONCENTRIC DIFFUSER	LOUVERED	NONE	NONE	WHITE	TITUS CSR-P	

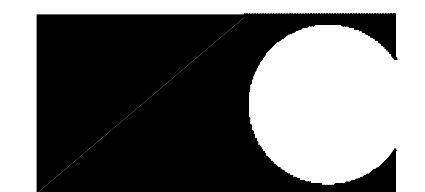
VENTALATION CALCULATION

SCHEDULES

2



9275 S.W. PEYTON LANE
WILSONVILLE, OREGON 97070
PHONE (503) 570-1600



10877 WATSON ROAD
ST. LOUIS, MO 63127
PROJECT MANAGERS

The professional of record is practicing as an individual.

JAMES C. ALBERTS
PROFESSIONAL OF RECORD
PHONE: 314-921-1100
LICENSE NO. 6691

REVISIONS:

PROJECT: 304121

PORTLAND/MARGINAL WAY
160 PREBLE STREET
PORTLAND, ME 04104
STORE #019101

SHEET TITLE

HVAC PLAN

TEMPLATE: 2003.2

DESIGN CONSTRUCTION BULLETIN:	DRAWN BY: MAT
	CHECKED BY: FJN
	SCALE: AS NOTED
	DATE: 03-12-04

SHEET NO. M1