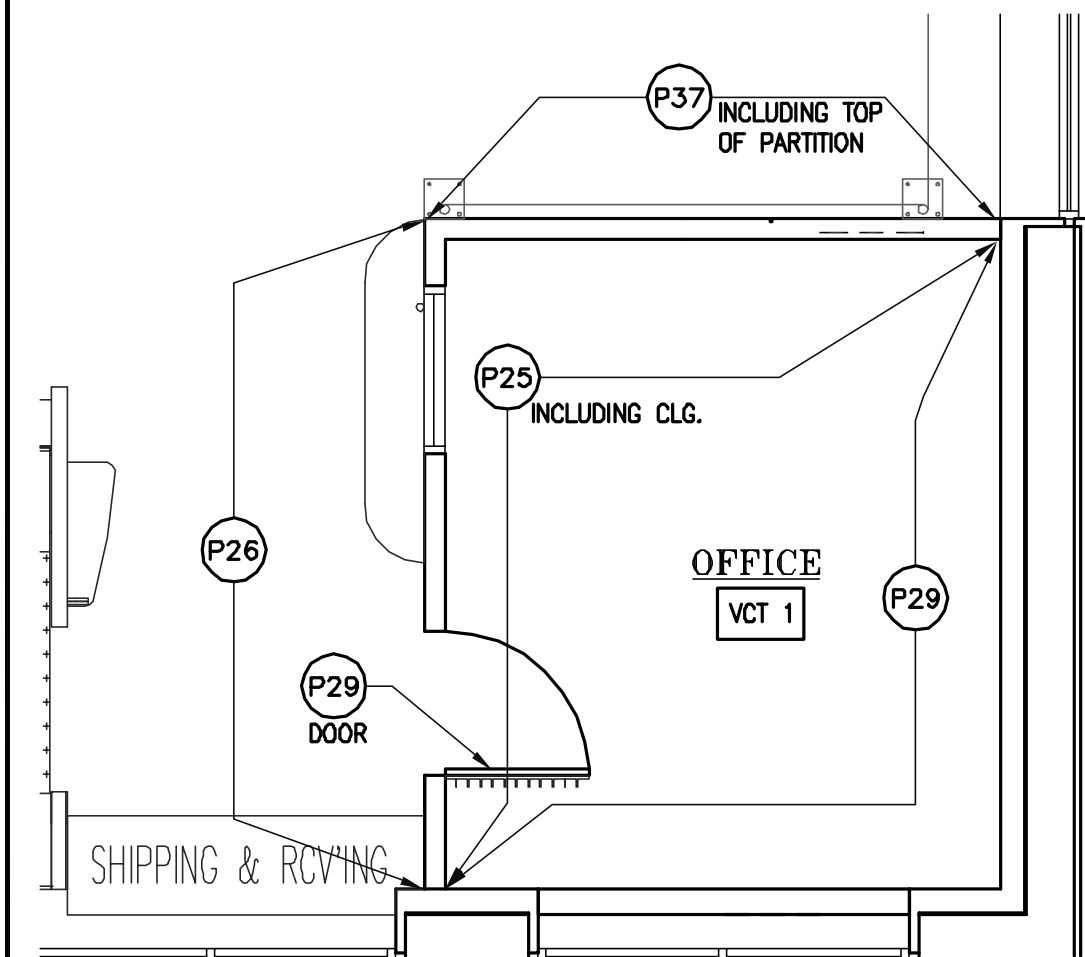


ROOM	FLOOR		BASE		WALLS		CEILING		REMARKS	
	MATL	FIN	MATL	FIN	MATL	FIN	MATL	FIN		
SALES	VCT	-	VINYL	(B1)	GB	(P)	-	(-)	OPEN	REFER TO FINISH PLAN FOR WALL COLOR.
ENTRY	WALK OFF	(W)	VINYL	(T1)	GLASS & PAINT	(P)	-	(-)	OPEN	REFER TO FINISH PLAN FOR WALL COLOR. PAINT ABOVE STOREFRONT.
OFFICE	VCT	-	VINYL	(B1)	GB	(P)	GB	(P)	8'-0"	REFER TO FINISH PLAN FOR WALL COLOR.
GAME CRAZY/ GAME CAGE	VCT	-	VINYL	(B1)	GB & CHAINLINK	(P)	-	(-)	OPEN	REFER TO FINISH PLAN FOR WALL COLOR.
TOILET	VCT	-	VINYL	(B2)	GB	(P)	GB	(P)	11'-4"	SEE RESTROOM ELEVATIONS FOR FRP LOCATIONS.
TOILET	VCT	-	VINYL	(B2)	GB	(P)	GB	(P)	11'-4"	SEE RESTROOM ELEVATIONS FOR FRP LOCATIONS.
ELECT. ROOM	CONC.	-	-	-	GB	-	-	-	OPEN	REFER TO ELECT. FOR PANEL LAYOUT.

**ROOM FINISH SCHEDULE**

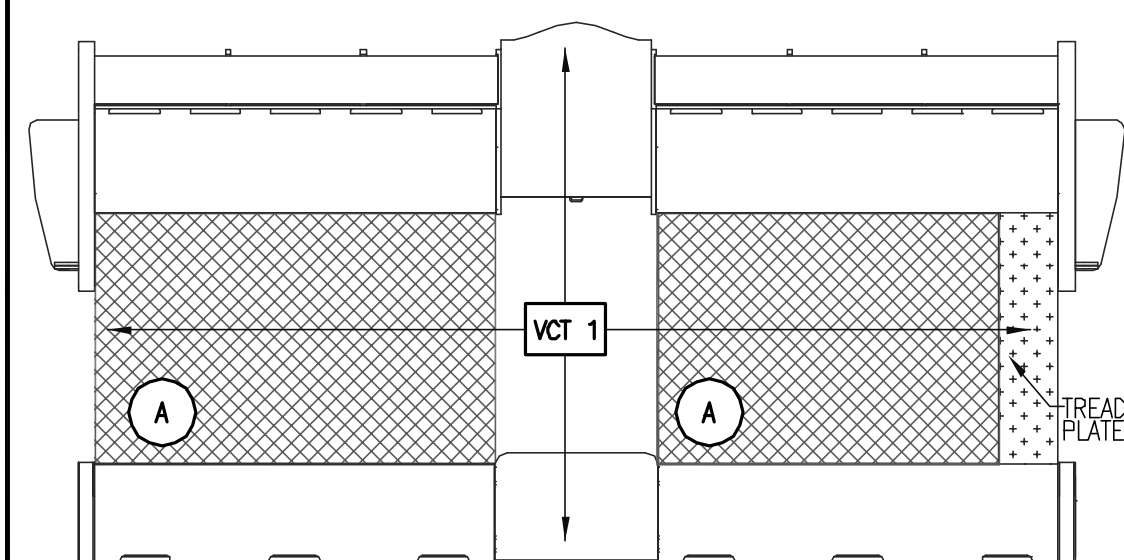
(P1)	SHERWIN WILLIAMS/HV WHITE SATIN FINISH
(P2)	SHERWIN WILLIAMS/BLACK SEMI-GLOSS FINISH
(P25)	SHERWIN WILLIAMS/ARIA IVORY #SW1109 SATIN FINISH
(P26)	SHERWIN WILLIAMS/REDFORD RED SATIN FINISH
(P29)	SHERWIN WILLIAMS/HV PURPLE RAIN SATIN FINISH
(P30)	SHERWIN WILLIAMS/PREPRITE WALLPAPER PRIMER/ SATIN FINISH
(P31)	SHERWIN WILLIAMS/GAMER GREEN SATIN FINISH
(P37)	SHERWIN WILLIAMS/TRICORN BLACK SATIN FINISH
(P38)	SHERWIN WILLIAMS/SATIN FINISH EL DORADO GOLD
(W)	WALK-OFF MAT (6'-7" OR 13'-2" ROLLS), WROUGHT IRON
(A)	ANTI-FATIGUE MAT (5' X 8' X 3/8") SOFT STAND TEXTURE SHIELDED, BLACK
(B1)	4" VINYL BASE ARMSTRONG #60 JET BLACK (RE: A5 FOR LOCATIONS)
(B2)	6" VINYL BASE ARMSTRONG #66 COOL GRAY AT INTERIOR RESTROOM WALLS
(T1)	ROPPE #168 VINYL GLUE DOWN REDUCER STRIP. COLOR #100 BLACK
(SN)	ROPPE #201 VINYL STAIR NOSING. COLOR #195 LIGHT GREY
(SV)	ARMSTRONG CONNECTION CORLON #85702 WHITE CLIFFS W/ARMSTRONG WELD ROD #W0321 WHITE BIRCH AT RESTROOMS
(VCT 1)	VCT. ARMSTRONG PREMIUM EXCELON TILE "STONETEX" COAL BLACK #52144
(VCT 2)	VCT. ARMSTRONG "SAFETY ZONE" COLOR #57004
(CG)	METAL CORNER GUARD - 48" LONG, 16 GAUGE



**FINISH LEGEND**

- INSTALL 4" VINYL BASE AT ALL VISIBLE INTERIOR WALLS, RE: A5.
- UNLESS OTHERWISE SPECIFIED BY HOLLYWOOD CM, LEAVE STRUCTURE ABOVE, INCLUDING DUCT WORK, UNFINISHED.
- PAINT WALLS ABOVE 12'-0" P25. COORDINATE WITH SHEET A5.
- PAINT ALL STEEL COLUMNS, P2 "BLACK". PAINT ALL MASONRY COLUMNS, P26 "REDFORD RED".
- CONTRACTOR SHALL VERIFY AVAILABILITY OF PAINT. CONTACT LOCAL VENDOR NO LESS THAN FIVE WEEKS BEFORE PAINT WILL BE NEEDED.
- CONTRACTOR TO OBTAIN A COPY OF CURRENT MANUFACTURERS INSTALLATION INSTRUCTIONS ON ALL PRODUCTS, INSTALL PER MANUFACTURERS RECOMMENDATIONS.

**ENLARGED OFFICE PLAN**

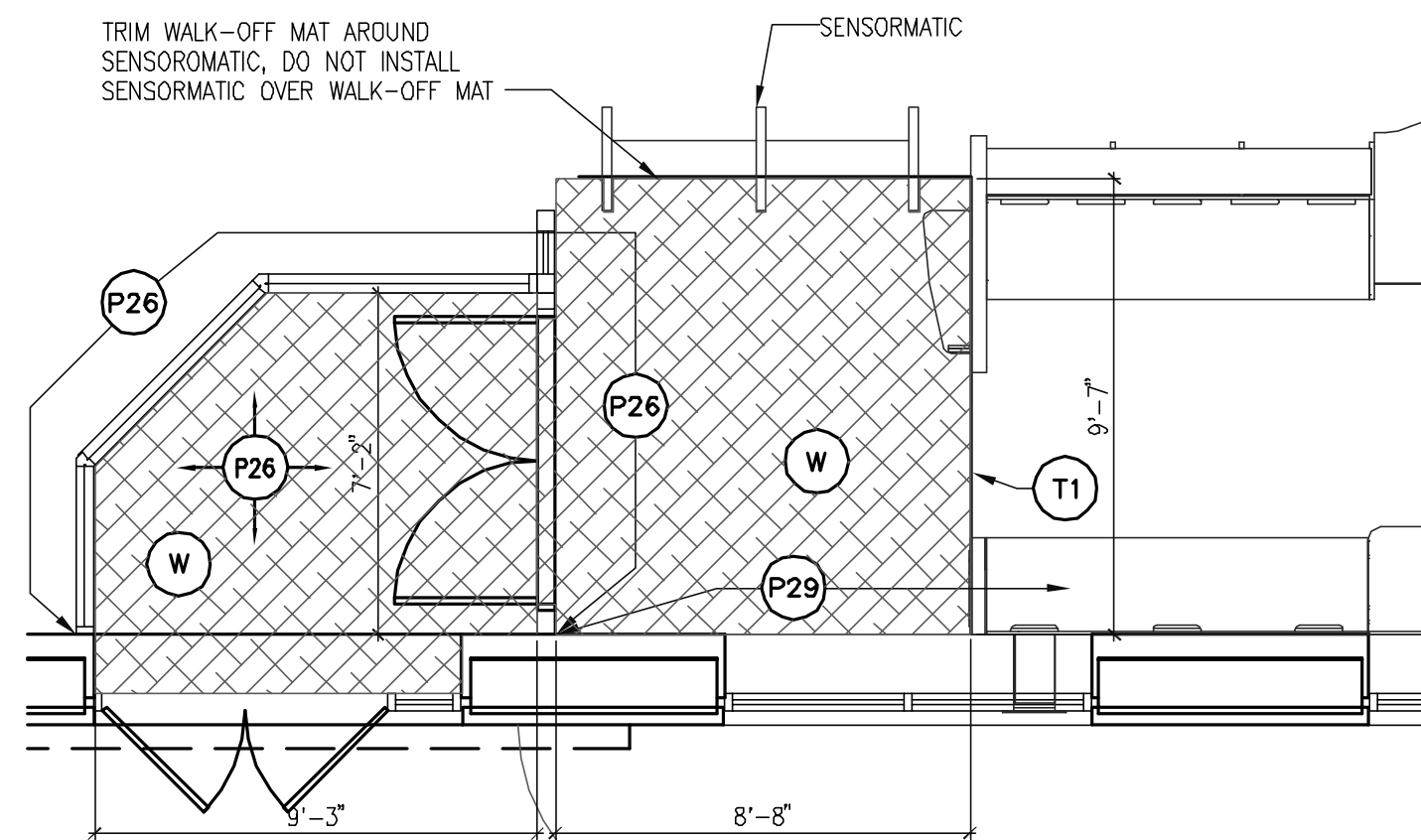


- NOTES
- LAY ANTI-FATIGUE MATS ON VCT SURFACE AT CASHWRAP.
  - TRIM ANTI-FATIGUE MAT AT TREAD PLATE.
  - ANTI-FATIGUE MATS SHALL NOT BE ADHERED TO FLOOR.

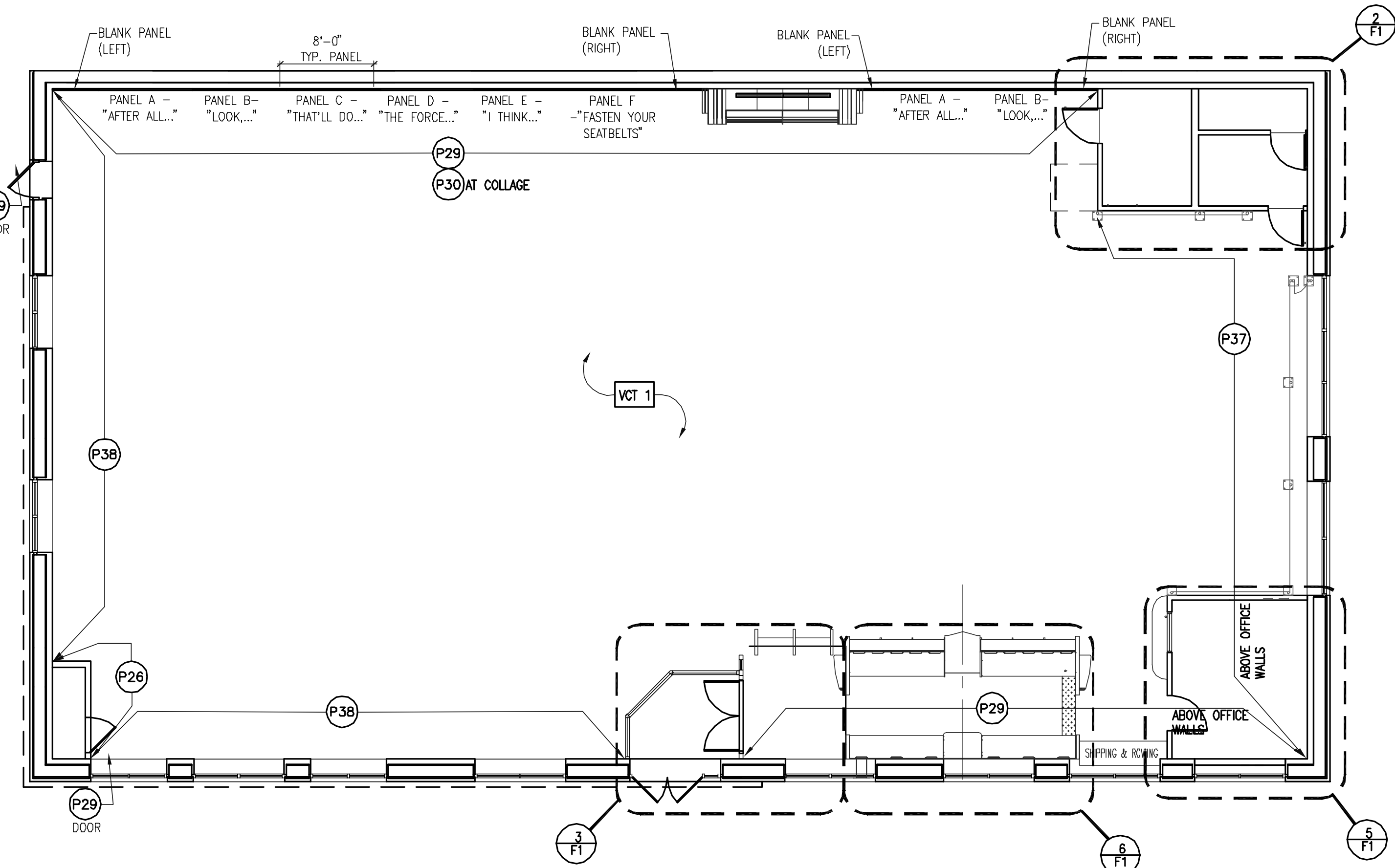
**NOTES**

**ANTI-FATIGUE MAT DETAIL**

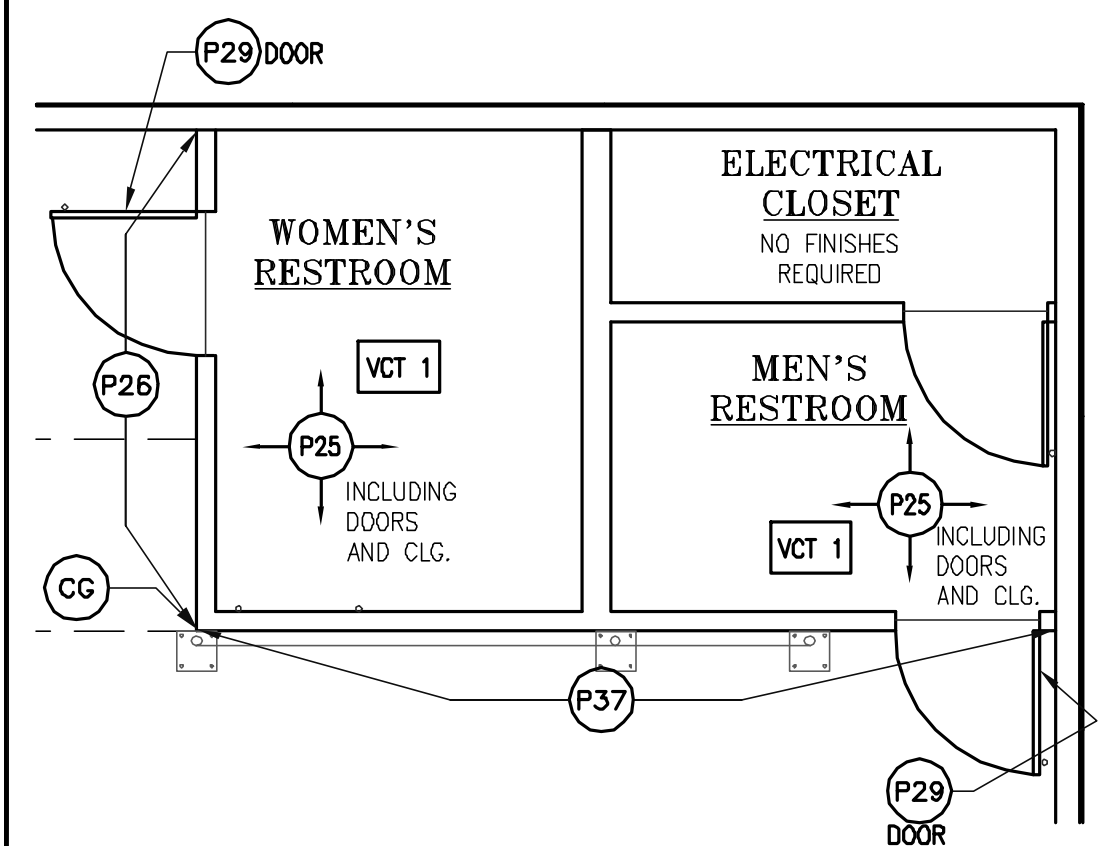
**FINISH PLAN**



**ENLARGED ENTRY PLAN**



**FINISH PLAN**



**ENLARGED RESTROOMS PLAN**

**HOLLYWOOD VIDEO**

9275 S.W. PEYTON LANE  
WILSONVILLE, OREGON 97070  
PHONE (503) 570-1800

**CASCO**  
10877 WATSON ROAD  
ST. LOUIS, MO 63127  
PROJECT MANAGERS

The professional of record is practicing as an individual.

RALPH R. SHAW  
PROFESSIONAL OF RECORD  
PHONE: 314-821-1100  
LICENSE NO. 10001787

REVISIONS:

PROJECT: 304121

PORTLAND/MARGINAL WAY  
160 PREBLE STREET  
PORTLAND, ME 04104  
STORE #019101

**SHEET TITLE**

**FINISH PLANS**

TEMPLATE: 2003.2  
DESIGN CONSTRUCTION BULLETIN:  
DRAWN BY: RBM  
CHECKED BY: RJB  
SCALE: AS NOTED  
DATE: 03-12-04

SHEET NO. **F1**