

The professional of record  
is practicing as an individual.

RALPH R. SHAW  
PROFESSIONAL OF RECORD  
PHONE: 314-821-1100  
LICENSE NO. 10001787

REVISIONS:

PROJECT:  
304121

PORTLAND/MARGINAL WAY  
160 PREBLE STREET  
PORTLAND, ME 04104  
STORE #019101

SHEET TITLE

**EXTERIOR ELEVATIONS**

TEMPLATE:  
2003.2  
DESIGN CONSTRUCTION  
BULLETIN:  
DRAWN BY: RBM  
CHECKED BY: RJB  
SCALE: AS NOTED  
DATE: 03-12-04

SHEET NO.  
**A6.1**

NOT USED

9

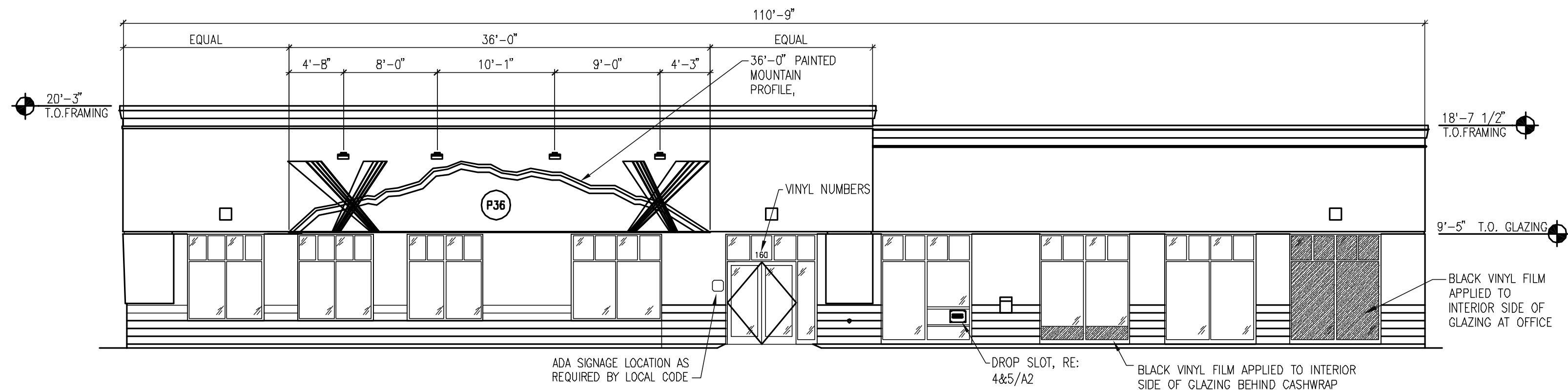
NOT USED

5

FRONT EXTERIOR ELEVATIONS

1/8" = 1'-0"

1



NOT USED

10

EXTERIOR FINISH SCHEDULE

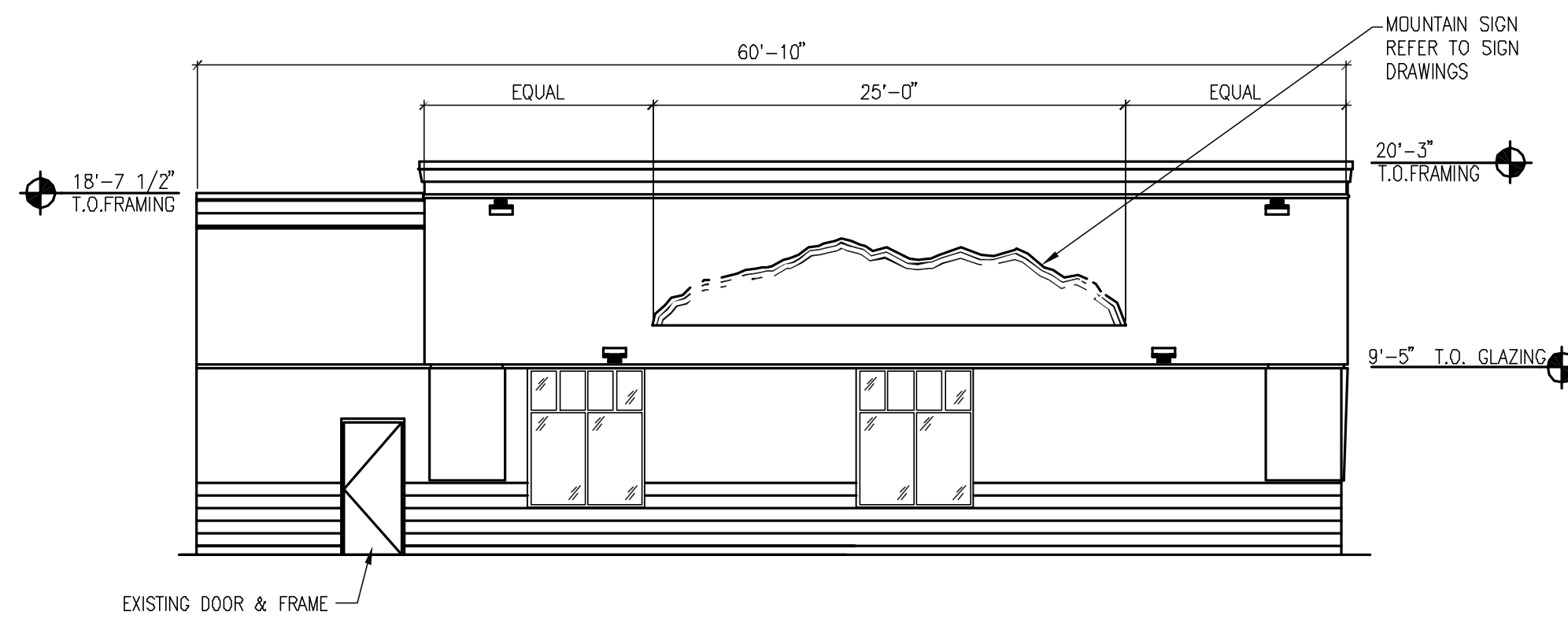
6

LEFT EXTERIOR ELEVATIONS

1/8" = 1'-0"

2

MARK	DESCRIPTION
(P19)	SHERWIN WILLIAMS, "LIGHT GRAY"
(P20)	SHERWIN WILLIAMS, HV "KEATON KHAKI"
(P24)	SHERWIN WILLIAMS, HV "SUN DROP WHITE" SW 2353
(P36)	SHERWIN WILLIAMS, HV "MOUNTAIN PURPLE"
(P40)	SHERWIN WILLIAMS, HV "VANILLA SKY"
(P41)	SHERWIN WILLIAMS, HV "A100-WHITE"



NOT USED

11

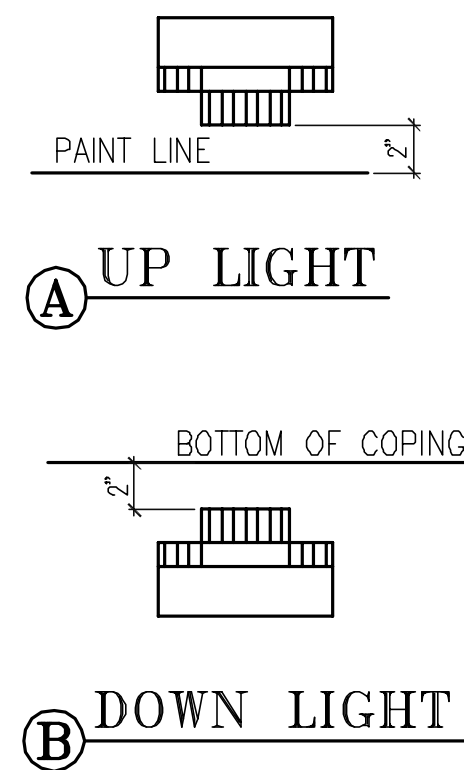
EXTERIOR LIGHT LOCATIONS

7

REAR EXTERIOR ELEVATION

1/8" = 1'-0"

3



NOT USED

12

NOT USED

8

RIGHT EXTERIOR ELEVATION

1/8" = 1'-0"

4

