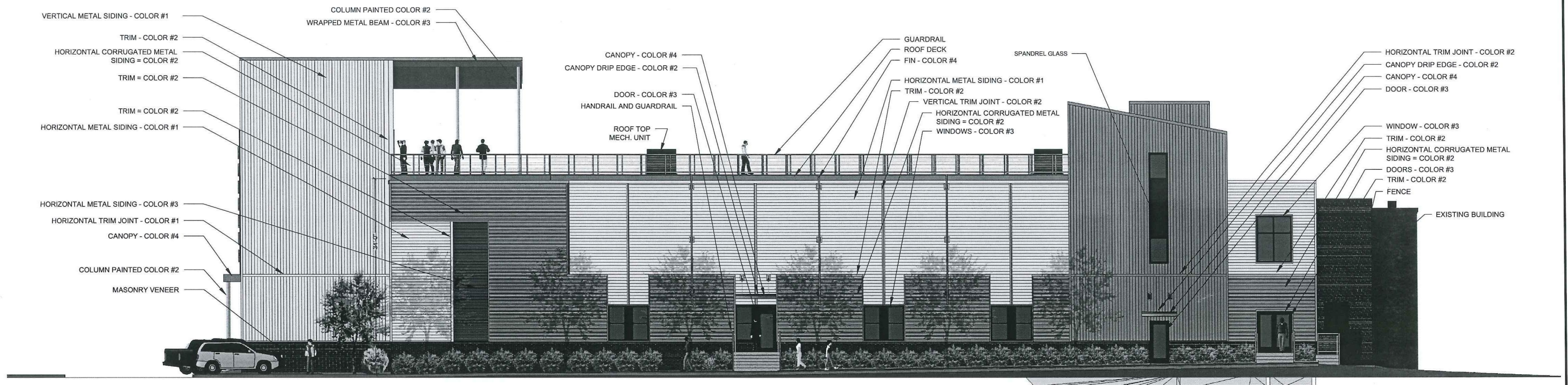


PROPOSED ADDITION TO BAYSIDE BOWL

DECEMBER 11, 2015



1 SOUTH ELEVATION
1/8" = 1'-0"

MATERIALS KEY			
ITEM	MANUF.	PROFILE	COLOR
HORIZONTAL METAL SIDING COLOR #1	CENTRIA	IW-20A, 20 GAUGE (NO INTERMEDIARY FLUTE) (CONCEALED FASTENERS)	SILVER SMITH #9946
HORIZONTAL METAL SIDING COLOR #3	CENTRIA	IW-20A, 20 GAUGE (NO INTERMEDIARY FLUTE) (CONCEALED FASTENERS)	RICH BLACK #9916
HORIZONTAL CORRUGATED METAL SIDING COLOR #2	CENTRIA	STYLE-RIB, 26 GAUGE (EXPOSED FASTENERS)	SLATE GRAY #181
FIN COLOR #4			CUSTOM ORANGE R:227, G:126, B:30
VERTICAL SIDING COLOR #1	CENTRIA	IW-20A, 20 GAUGE (NO INTERMEDIARY FLUTE) (CONCEALED FASTENERS)	SILVER SMITH #9946
WINDOWS AND WINDOW SCREEN COLOR #3			BLACK
BRICK VENEER	MORIN	ACADEMY SMOOTH NARROW FLASHED RANGE	RED



CITY OF PORTLAND
APPROVED SITE PLAN
 Subject to Conditions of Approval
 and Standard Conditions
 Mitchell & Associates
 LANDSCAPE ARCHITECTS
 6/9/15

DATE of APPROVAL RYAN SENATORE ARCHITECTURE
 PLANNER Richard Knowland
 PROJECT NO. # 2015-230