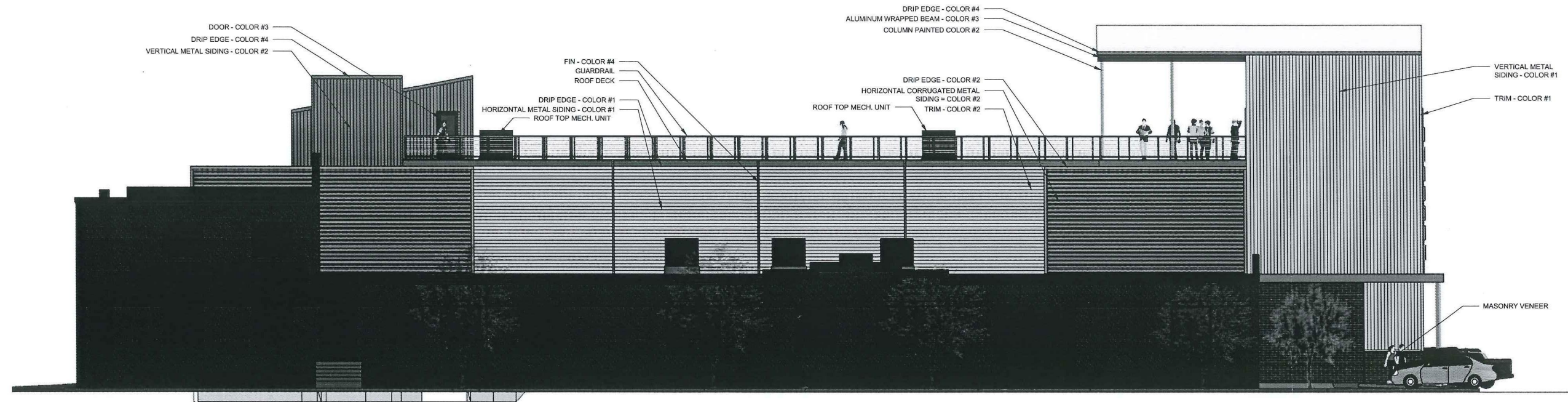


# PROPOSED ADDITION TO BAYSIDE BOWL

DECEMBER 11, 2015



1 NORTH ELEVATION  
1/8" = 1'-0"

MATERIALS KEY			
ITEM	MANUF.	PROFILE	COLOR
HORIZONTAL METAL SIDING COLOR #1	CENTRIA	IW-20A, 20 GUAGE (NO INTERMEDIARY FLUTE) (CONCEALED FASTENERS)	SILVER SMITH #9946
HORIZONTAL METAL SIDING COLOR #3	CENTRIA	IW-20A, 20 GUAGE (NO INTERMEDIARY FLUTE) (CONCEALED FASTENERS)	RICH BLACK #9916
HORIZONTAL CORRUGATED METAL SIDING COLOR #2	CENTRIA	STYLE-RIB, 26 GUAGE (EXPOSED FASTENERS)	SLATE GRAY #181
FIN COLOR #4			CUSTOM ORANGE R:227, G:126, B:30
VERTICAL SIDING COLOR #1	CENTRIA	IW-20A, 20 GUAGE (NO INTERMEDIARY FLUTE) (CONCEALED FASTENERS)	SILVER SMITH #9946
WINDOWS AND WINDOW SCREEN COLOR #3			BLACK
BRICK VENEER	MORIN	ACADEMY SMOOTH NARROW FLASHED RANGE	RED



**CITY OF PORTLAND**  
**APPROVED SITE PLAN**

Subject to Conditions of Approval  
and Standard Conditions

**Mitchell & Associates**  
LANDSCAPE ARCHITECTS

6/9/15

DATE of APPROVAL RYAN SENATORE ARCHITECTURE

PLANNER Richard Knowland

PROJECT NO. # 2015-230