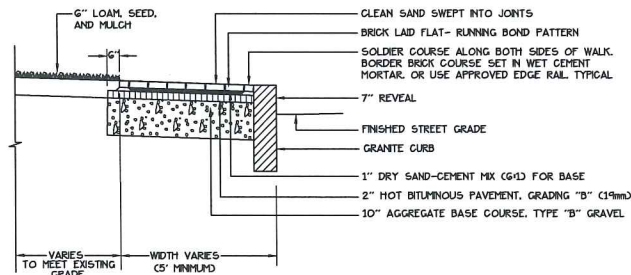


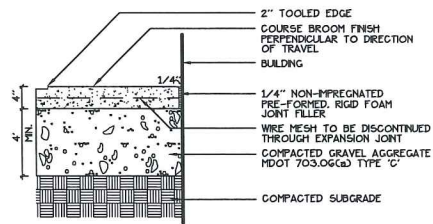
1 BITUMINOUS PAVEMENT - PARKING LOT
5 NOT TO SCALE

NOTE: BRICK SIDEWALKS IN CITY OF PORTLAND RIGHT-OF-WAY SHALL BE FIRE HALL PATHWAY PAVEMENT. LAGRANCE ITEM #595223

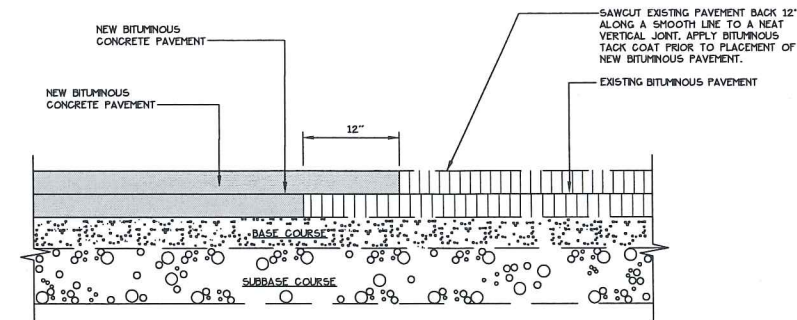
NOTE: SLOPE 0.02 TYPICAL TOWARD CURB.



2 BRICK SIDEWALK WITH BITUMINOUS BASE AND GRANITE CURB
5 NOT TO SCALE

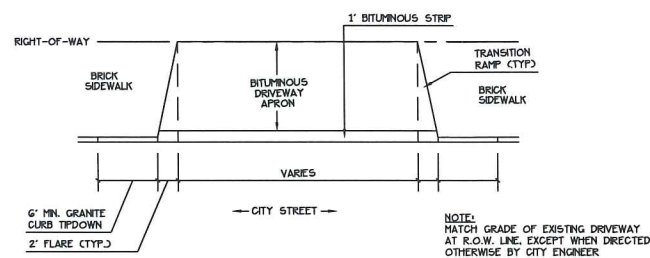


6 CONCRETE SLAB
5 NOT TO SCALE



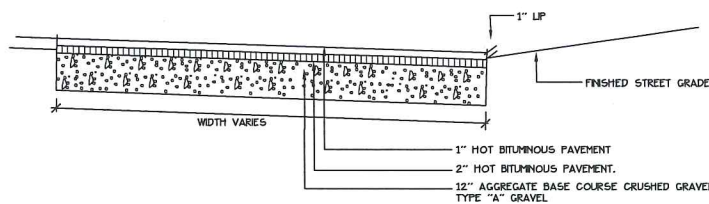
11 PAVEMENT SAWCUT DETAIL
5 NOT TO SCALE

REFER TO CITY TECHNICAL SPECIFICATIONS FOR PAVEMENT RESTORATION

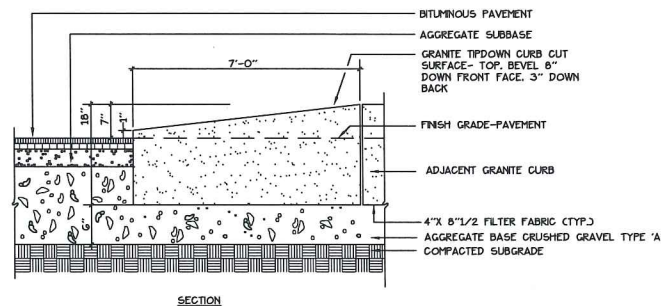


7 DRIVEWAY APRON LAYOUT
5 NOT TO SCALE

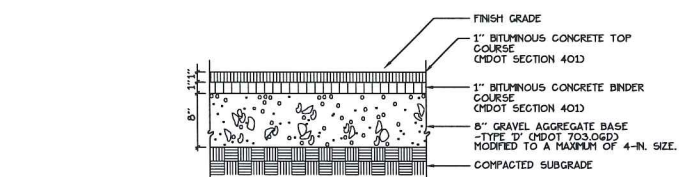
NOTE: MATCH GRADE OF EXISTING DRIVEWAY AT R.O.W. LINE, EXCEPT WHEN DIRECTED OTHERWISE BY CITY ENGINEER



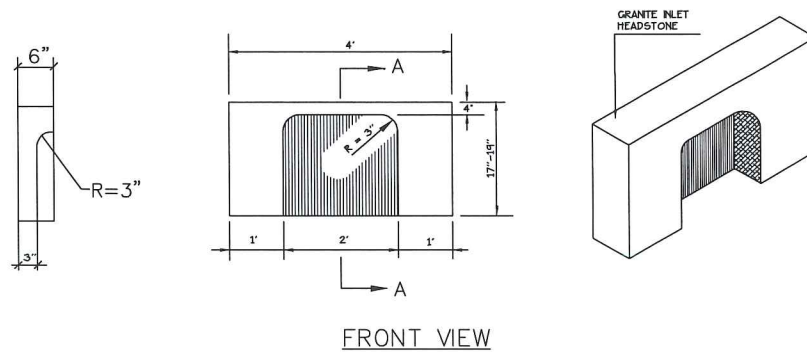
3 BITUMINOUS DRIVEWAY APRON
5 NOT TO SCALE



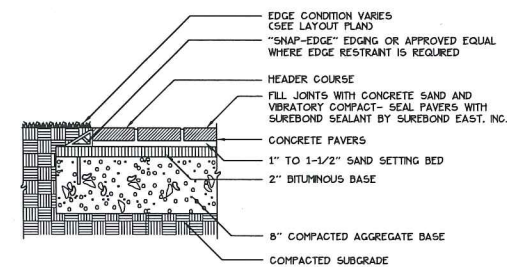
8 GRANITE TIP-DOWN CURB
5 NOT TO SCALE



4 BITUMINOUS SIDEWALK
5 NOT TO SCALE



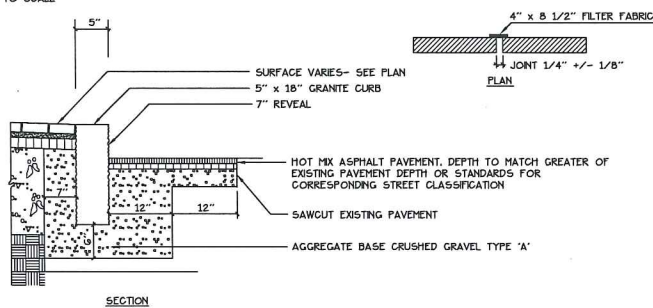
9 4\"/>



5 CONCRETE PAVERS
5 NOT TO SCALE

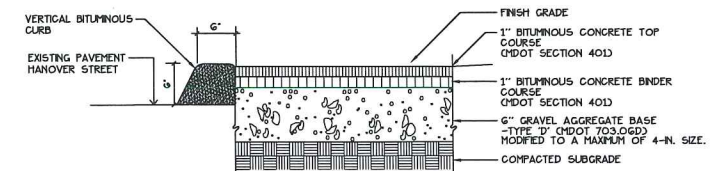
NOTE: PAVERS SHALL BE SEALED WITH SUREBOND SB-1370 JOINT STABILIZING SEALER OR APPROVED EQUAL

MANUFACTURER: GENEST CONCRETE WORKS, INC. OR APPROVED EQUAL



10 VERTICAL GRANITE CURB
5 NOT TO SCALE

12 BIKE RACK
5 NOT TO SCALE



13 TEMPORARY BITUMINOUS SIDEWALK - HANOVER STREET
5 NOT TO SCALE

Prepared For:
Applicant:
BoPo, L.L.C.
58 Alder Street
Portland, Maine
Justin Alford, Manager

Prepared By:
MITCHELL & ASSOCIATES
Landscape Architects
The Staples School
70 Center Street
Portland, Maine 04101
Tel: (207) 774-4427

BAYSIDE BOWL
 Portland, Maine
 58 Alder Street

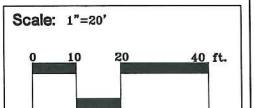
Date:
DECEMBER 18, 2015

Issued For:
AMENDED
SITE PLAN SUBMISSION

Revisions:

Reproduction or reuse of this document without the expressed written consent of Mitchell & Associates is prohibited.

Title:
SITE DETAILS



North:

Sheet No:
5

