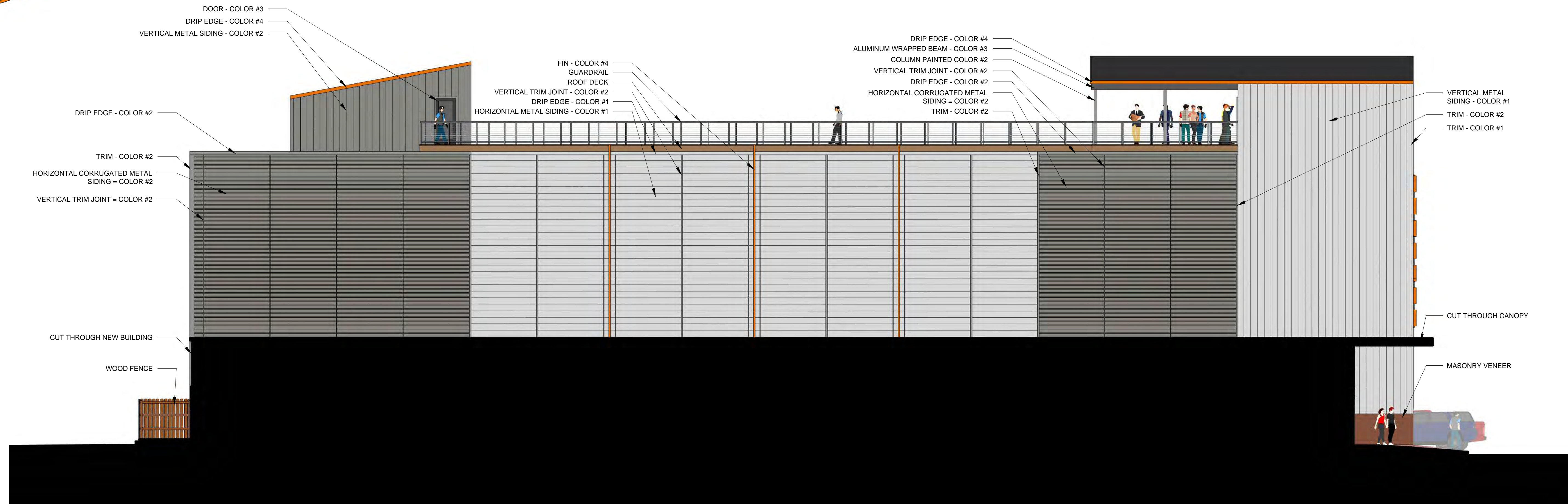




# PROPOSED ADDITION TO BAYSIDE BOWL



PORTLAND  
COMMUNITY  
SQUASH



1 NORTH ELEVATION  
1/8" = 1'-0"

| MATERIALS KEY                               |        |   |                                  |
|---|--------|---|----------------------------------|
| ITEM  | MANUF. | PROFILE   | COLOR                            |
| HORIZONTAL METAL SIDING COLOR #1            | MUROX  | HF-12NF (NO INTERMEDIARY FLUTE) (CONCEALED FASTENERS)   | GALVALUME PLUS                   |
| HORIZONTAL METAL SIDING COLOR #3            | MUROX  | HF-12NF (NO INTERMEDIARY FLUTE) (CONCEALED FASTENERS)   | BLACK QC 18262                   |
| HORIZONTAL CORRUGATED METAL SIDING COLOR #2 | AGWAY  | M-156R (EXPOSED FASTENERS)                              | CHARCOAL QC 18306                |
| FIN COLOR #4                                |        |   | CUSTOM ORANGE R:227, G:126, B:30 |
| VERTICAL SIDING COLOR #1                    | MUROX  | HF-11NF (NO INTERMEDIARY FLUTE) (CONCEALED FASTENERS)   | GALVALUME PLUS                   |
| WINDOWS AND WINDOW SCREEN COLOR #3          |        |   | BLACK                            |
| MASONRY VENEER                              | GENEST | MIRRA-TEX GROUND FACE BLOCK WITH INTEGRAL WATERPROOFING | GF-308 BRICK RED                 |

PROGRESS PRINT ONLY  
Not for Construction