

GENERAL NOTES

1: DRAWING NOTES:
CONTRACTOR TO FURNISH AND INSTALL ALL NOTED LABOR AND MATERIALS UNLESS OTHERWISE NOTED.

2: CODE COMPLIANCE:
ALL WORK SHALL CONFORM TO THE LATEST EDITION OF STATE, LOCAL AND OTHER CODES WHICH APPLY TO THIS PROJECT OR HAVE JURISDICTION.

3: COORDINATION:
IT IS THE RESPONSIBILITY OF THE CONTRACTOR TO COORDINATE ALL DISCIPLINES AND TRADES SO THAT ALL BUILDING SYSTEMS AND COMPONENTS CAN BE ASSEMBLED WITHOUT CONFLICTS. IN THE EVENT THAT THE CONSTRUCTION DOCUMENTS DEFINE CONDITIONS WHICH PROHIBIT, OR MAY PROHIBIT, SUCH ASSEMBLY, THE CONTRACTOR SHALL BRING TO THE ARCHITECTS ATTENTION, IN WRITING AND IN A TIMELY FASHION, SUCH CONDITION. THE CONTRACTOR SHALL NOT PROCEED WITH RELATED WORK WITHOUT A WRITTEN RESOLUTION CLARIFICATION FROM THE ARCHITECT.
THE CONTRACTOR AND HIS/HIS SUBCONTRACTORS SHALL BE RESPONSIBLE FOR PROVIDING MATERIALS AND SYSTEMS SHOWN IN THE CONSTRUCTION DOCUMENTS REGARDLESS OF WHERE THE INFORMATION IS LOCATED. WHERE COMPONENTS OF A SYSTEM ARE INDICATED, THE CONTRACTOR SHALL BE RESPONSIBLE FOR PROVIDING ALL LABOR AND MATERIALS NECESSARY TO COMPLETE THE SYSTEM.

4: DISCREPANCIES & CLARIFICATIONS:
THIS PROJECT INVOLVES THE FIT-UP OF AN EXISTING BUILDING. EXISTING DIMENSIONS SHOWN ON THE DRAWINGS ARE BELIEVED TO BE ACCURATE, BUT CANNOT BE GUARANTEED. MEASURE AND VERIFY DIMENSIONS IN FIELD PRIOR TO FABRICATION AND CONSTRUCTION. IT IS THE RESPONSIBILITY OF THE CONTRACTOR TO BRING TO THE ARCHITECTS ATTENTION, IN WRITING, ANY DISCREPANCIES OR AMBIGUITIES IN THE DRAWINGS AND/OR SPECIFICATIONS. THE CONTRACTOR SHALL NOT PROCEED WITH RELATED WORK WITHOUT A WRITTEN RESOLUTION OR CLARIFICATION FROM THE ARCHITECT.

5: LAYOUT:
UNLESS INDICATED OTHERWISE, CENTER WALL FRAMING AND PARTITION FRAMING ON COLUMN LINES. FLOOR PLAN DIMENSIONS ARE TO CENTER OF FRAMING, FACE OF CONCRETE, FACE OF CMU, OR FROM COLUMN CENTERLINES, UNLESS INDICATED OTHERWISE. DOORS AND WINDOWS ARE DIMENSIONED TO CENTERLINES UNLESS INDICATED OTHERWISE.

6: CENTERING:
UNLESS INDICATED OTHERWISE, CENTER BUILDING ELEMENTS WITHIN OR BETWEEN OTHER BUILDING ELEMENTS WHEN CONDITIONS OR THE DRAWINGS INDICATE OR IMPLY THAT SUCH IS THE INTENT, WHETHER OR NOT DIMENSIONS ARE INCLUDED.

7: SYMMETRY:
WHERE CONDITIONS OR THE DRAWINGS INDICATE OR IMPLY THAT SYMMETRY IS INTENDED, INFORMATION PROVIDED AT ONE SIDE APPLIES EQUALLY TO BOTH SIDES, UNLESS CONDITIONS CLEARLY PRECLUDE SUCH APPLICATION.

8: ACCESSIBILITY:
ALL HANDICAPPED ACCESSIBLE BATHROOMS, GRAB BARS, AND DOOR OPENINGS SHALL MEET THE REQUIREMENTS OF TITLE 94-348, CHAPTER 5 OF THE MAINE HUMAN RIGHTS COMMISSION TITLE LATEST EDITION & THE DEPARTMENT OF JUSTICE ADA STANDARDS FOR ACCESSIBLE DESIGN.

9: DRAWING SCALES:
WORK FROM THE GIVEN DIMENSIONS ONLY. SCALE IS INDICATED ON THE DRAWINGS FOR CONVENIENCE ONLY. IT IS NOT INTENDED THAT INFORMATION BE DETERMINED BY SCALING THE DRAWINGS SINCE SOME ITEMS MAY NOT BE TO SCALE.

10: WATER-RESISTANT GWB:
INSTALL WATER-RESISTANT GYPSUM WALL BOARD IN ALL REST ROOMS & TOILET ROOMS OR AT ANY WALL WITH PLUMBING FIXTURES.

10A: HIGH IMPACT GWB:
INSTALL HIGH IMPACT GYPSUM WALL BOARD IN ALL STAIRWELLS

11: INTERIOR ELEVATIONS:
INTERIOR ELEVATIONS MAY BE REVERSED FROM AND/OR SIMILAR TO ACTUAL CONDITIONS. SEE FLOOR PLANS FOR WINDOW AND DOOR QUANTITIES AND LOCATIONS, FOR CASEWORK LAYOUTS, AND FOR MONITOR LOCATIONS.

12: BUILDING INSULATION:
PROVIDE AS INDICATED IN WALL SECTIONS AND IN ACCORDANCE WITH PARTITION TYPES, WHETHER OR NOT SHOWN IN DETAILS AND OTHER DRAWINGS. FOR CLARITY, INSULATION MAY NOT BE SHOWN IN SOME CASES, EVEN IF IT IS TO BE PROVIDED.

13: BLOCKING:
INSTALL BLOCKING BEHIND ALL SURFACE-APPLIED FIXTURES TRIM, CASEWORK, SHELVES, BRACKETS, TOILET ACCESSORIES, CHAIR RAILS, PICTURE RAILS, GRAB BARS, BASE MOLDINGS, AND AS OTHERWISE REQUIRED, WHEN SUCH ITEMS ARE APPLIED ON STUD WALLS.

14: PENETRATIONS AT STRUCTURAL MEMBERS:
BEFORE PENETRATING JOISTS, BEAMS OR OTHER STRUCTURAL MEMBERS, CONSULT WITH THE ARCHITECT.

15: DAMAGED WORK:
BUILDING OR SITE COMPONENTS WHICH ARE AFFECTED BY NEW WORK, DEMOLITION, OR WHICH MAY BE DAMAGED BY THE GENERAL CONTRACTOR OR ANY SUB-CONTRACTOR SHALL BE REPLACED OR RESTORED TO ORIGINAL CONDITION AND COLOR TO MEET THE APPROVAL OF THE ARCHITECT.

16: UTILITIES:
VERIFY THE SIZE AND LOCATION OF ALL UNDERGROUND UTILITIES AND REPORT ANY DISCREPANCIES TO THE ARCHITECT IN WRITING. DO NOT PROCEED WITH WORK UNTIL THE DISCREPANCY HAS BEEN RESOLVED TO THE SATISFACTION OF THE ARCHITECT.

17: RATED CONSTRUCTION:
PROVIDE RATED CONSTRUCTION AS REQUIRED BY CODE, AS SPECIFIED, AND AS INDICATED ON DRAWINGS. IT IS THE RESPONSIBILITY OF THE CONTRACTOR TO PROVIDE AND INSTALL ALL COMPONENTS REQUIRED TO CREATE SUCH RATED CONSTRUCTION, REGARDLESS OF WHETHER OR NOT SUCH COMPONENTS ARE INDICATED. PROVIDE CONTINUITY OF SUCH RATED CONSTRUCTION AROUND AND BETWEEN SPACES, INCLUDING AT CHASES AND AT FLOORS, TO MAINTAIN COMPLETE SEPARATIONS, EVEN IF NOT SPECIFICALLY INDICATED.

18: SHOP DRAWINGS:
SUBMIT SHOP DRAWINGS TO THE ARCHITECT FOR REVIEW PRIOR TO FABRICATIONS. SUBMITTALS REQUIRED INCLUDE, BUT ARE NOT LIMITED TO, SHOP DRAWINGS FOR ALL PREFABRICATED CONCRETE, STEEL, MILLWORK & SIGNAGE, SAMPLES OF ALL PROPOSED PAINTS, METALS, WALL COVERINGS, LAMINATES, SOLID SURFACE MATERIALS, CERAMIC TILE, AND HARDWARE. SUBMIT MANUFACTURERS' DATA FOR ALL LIGHTING SYSTEMS, AND HARDWARE.

19: PERMITS:
THE GENERAL CONTRACTOR SHALL OBTAIN AND PAY FOR ANY BUILDING PERMITS REQUIRED AND CARRY ANY INSURANCE COVERAGES REQUIRED.

20: INTERIOR FINISHES:
ALL INTERIOR FINISHES AND FURNISHINGS ARE TO BE CLASS 'A' FIRE RATED AND ARE TO COMPLY WITH SECTION 920.0 BOCA (INTERIOR FLAME SPREAD).

21: ELECTRICAL DESIGN:
REFER TO ELECTRICAL DRAWINGS AND SPECIFICATIONS

22: WASTE REMOVAL:
THE GENERAL CONTRACTOR SHALL DISPOSE OF ALL WASTE AND DEBRIS OFF THE PREMISES.

23: LANDLORD COORDINATION:
THE GENERAL CONTRACTOR MUST COORDINATE WITH THE BUILDING OWNER ALL ACTIVITIES INCLUDING BUT NOT LIMITED TO WORK WHICH WILL GENERATE EXCESSIVE NOISE AND MODIFICATION TO UTILITIES. WORK MUST NOT INTERFERE WITH EXISTING SMOKE DETECTORS, ALARMS OR BUILDING SYSTEM MANAGEMENT.

24: TEMPORARY FACILITIES:
PROVIDE ALL TEMPORARY FACILITIES AND SERVICES, CONSTRUCTION AND SUPPORT FACILITIES, AND SECURITY AND PROTECTION AS NEEDED TO PROTECT NEW AND EXISTING CONSTRUCTION FOR THE DURATION OF A COMPLETE INSTALLATION.

25: FINAL CLEANING:
EMPLOY EXPERIENCED WORKERS FOR FINAL CLEANING. CLEAN EACH SURFACE TO THE CONDITION EXPECTED IN A COMMERCIAL BUILDING CLEANING PROGRAM.

26: MANUFACTURERS INSTRUCTIONS:
ALL MATERIALS & EQUIPMENT SHALL BE INSTALLED ACCORDING TO MANUFACTURER'S SPECIFICATIONS.

27: GUARANTEE:
GUARANTEE: ALL MATERIALS AND WORKMANSHIP SHALL BE GUARANTEED FOR A PERIOD OF ONE YEAR FROM THE DATE OF FINAL ACCEPTANCE UNLESS OTHERWISE SPECIFIED FOR A LONGER PERIOD OF TIME ON A CERTAIN ITEM.

28: ASBESTOS:
ALL MATERIAL USED FOR THE CONSTRUCTION OF THIS PROJECT, WHETHER BUILDING MATERIALS OR APPURTENANCES, SHALL BE NON-ASBESTOS CONTAINING MATERIAL.

29: HAZARDOUS FUMES:
THE GENERAL CONTRACTOR SHALL CONFIRM THAT ALL MATERIAL AND FINISHES SPECIFIED AND THEIR FABRICATION OR INSTALLATION WILL NOT RELEASE FUMES OR AROMAS DURING CONSTRUCTION WHICH MAY BE A HAZARD OR NUISANCE TO PERSONNEL.

30: PEST CONTROL:
SEAL AND CAULK AROUND ALL PENETRATIONS, CRACKS AND CREVICES AND ANY OPENINGS CAPABLE OF HARBORING INSECTS/RODENTS.

31: EXPOSED UTILITIES:
ALL EXPOSED UTILITY WIRES AND PIPES (ELECTRICAL, PLUMBING, ETC.) SHALL BE INSTALLED IN A WAY THAT DOES NOT OBSTRUCT OR PREVENT THE CLEANING OF FLOORS, WALLS, AND CEILING AREAS. THEY SHALL BE INSTALLED A MINIMUM OF 6" OFF FLOORS AND 1" OFF WALLS, CEILINGS AND ADJACENT PIPES.

32: OWNER SUPPLIED EQUIPMENT:
EQUIPMENT SUPPLIED BY THE OWNER AND INSTALLED BY THE GENERAL CONTRACTOR! EQUIPMENT INFORMATION AND SPECIFICATIONS ARE TO BE THE MOST CURRENT AVAILABLE AT THE TIME OF DOCUMENTATION PREPARATION. THE GENERAL CONTRACTOR SHALL BE RESPONSIBLE FOR VERIFYING WITH THE OWNER THE EXACT DIMENSIONS AND EQUIPMENT CONNECTION REQUIREMENTS (INCLUDING ELECTRICAL CIRCUIT REQUIREMENTS) OF EQUIPMENT TO BE SUPPLIED. THE GENERAL CONTRACTOR SHALL MAKE ALL FINAL CONNECTIONS AS NOTED ON THE DRAWINGS. INSTALL THE SET UP IN WORKING ORDER, CHECK WARRANTIES, TEST AND NOT VOID WARRANTIES. THE GENERAL CONTRACTOR SHALL COORDINATE WITH THE OWNER DELIVERY, STORAGE AND INSTALLATION OF ALL OWNER SUPPLIED EQUIPMENT. THE GENERAL CONTRACTOR SHALL STORE EQUIPMENT IF REQUESTED BY THE OWNER UNTIL INSTALLATION. SEE DRAWINGS FOR OTHER OWNER SUPPLIED/GENERAL CONTRACTOR INSTALLED ITEMS.

33: FIRE PROTECTION NOTE:
EXISTING SPRINKLERHEADS, ALARM SYSTEM AND DETECTORS ARE TO BE MODIFIED TO CONFORM WITH THE PROPOSED PLAN. COORDINATE WITH THE ARCHITECT. ANY MODIFICATION OR LOCATIONS WHERE EXISTING SYSTEMS ARE AFFECTED BY THE NEW DESIGN.

34: SOILS AT FOOTINGS:
REPORT THE LOCATION OF ALL UNSUITABLE SOILS AND MATERIALS BELOW ANTICIPATED LEVEL OF FOOTING TO THE ARCHITECT PRIOR TO THE SETTING OF FORMS.

35: ACCESS PANELS:
CONTRACTOR IS RESPONSIBLE FOR COORDINATING QUANTITY AND LOCATION OF ALL REQUIRED ACCESS PANELS FOR ALL MEP CONTROLS, CLEANOUTS, DAMPERS, PULL BOXES, ETC.

36: EXISTING HAZARDOUS MATERIALS
ALL HAZARDOUS MATERIALS INCLUDING BUT NOT LIMITED TO ASBESTOS AND LEAD PAINT ARE TO BE HANDLED, ENCAPSULATED, ABATED AND DISPOSED OF IN ACCORDANCE WITH ANY AND ALL FEDERAL, STATE AND LOCAL REQUIREMENTS AND REGULATIONS.

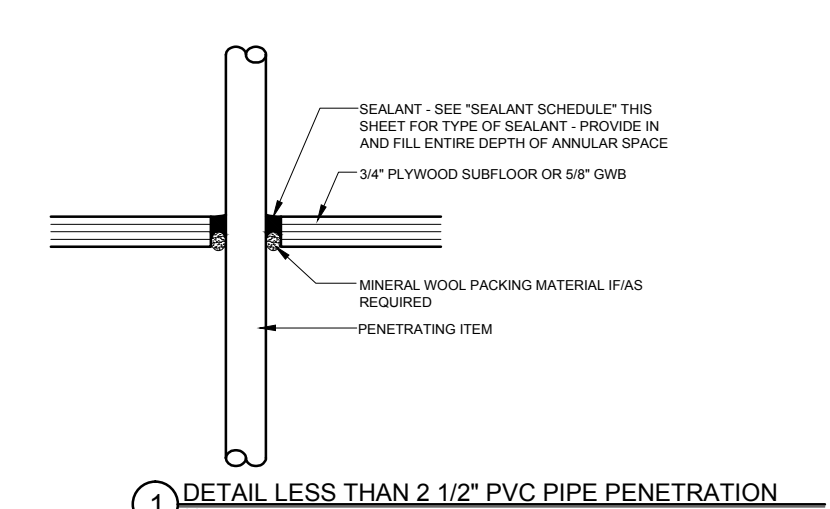
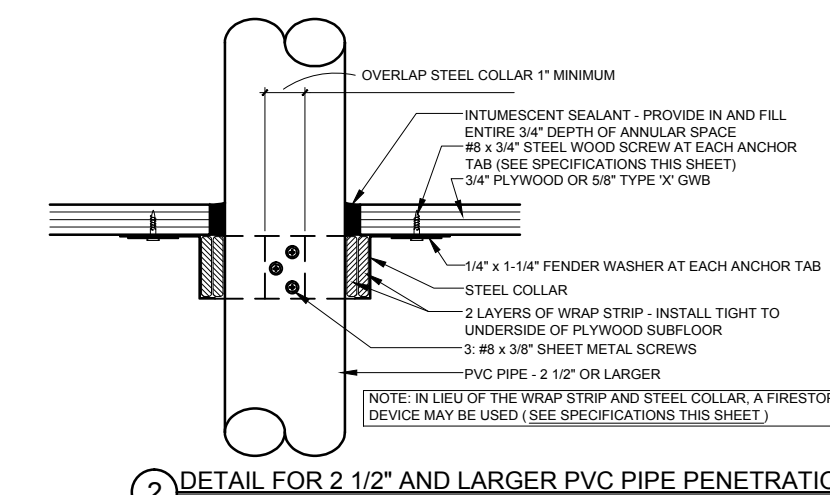
37: INDUSTRY STANDARDS:
ALL WORK SHALL BE PERFORMED IN ACCORDANCE WITH INDUSTRY STANDARDS. STANDARDS INCLUDE BUT ARE NOT LIMITED TO THE FOLLOWING:

- AAMA AMERICAN ARCHITECTURAL MANUFACTURERS ASSOCIATION
- ACI AMERICAN CONCRETE INSTITUTE
- ANSI AMERICAN NATIONAL STANDARDS INSTITUTE
- ASTM AMERICAN SOCIETY FOR TESTS AND MATERIALS
- AWI ARCHITECTURAL WOODWORK INSTITUTE "CUSTOM GRADE"
- AWS AMERICAN WELDING SOCIETY
- IGMA INSULATING GLASS MANUFACTURERS ALLIANCE
- NAAMM NATIONAL ASSOCIATION OF ARCHITECTURAL METAL MANUFACTURERS
- NRCA NATIONAL ROOFING CONTRACTORS ASSOCIATION
- NTPA NATIONAL TILE CONTRACTORS ASSOCIATION
- SMACNA SHEET METAL AND AIR CONDITIONING NATIONAL ASSOCIATION
- WDMA WINDOW AND DOOR MANUFACTURERS ASSOCIATION

ABBREVIATIONS

A	AC AIR CONDITIONING	L	LAB LABORATORY
ACT ACoustical CEILING TILE	AD AREA DRAIN	LAM LAMINATED	LC FOUND
ADAAG AMERICANS WITH DISABILITIES ACT	ADD ACCESSIBILITY'S GUIDELINES	LB LEFT HAND	LCC LEAD COATED COPPER
ADD ABOVE FINISHED FLOOR	AHU AIR-HANDLING UNIT	M	MACHINE
AL ALUMINUM	ARCH ARCHITECT/ARCHITECTURAL	MAS MASONRY	MATL MATERIAL
AWP ACoustic WALL PANEL	B	MAX MAXIMUM	MDO MEDIUM-DENSITY OVERLAY
B TO BLS BACK-TO-BACK ANGLES	B.G.C. BASE BUILDING GENERAL CONTRACTOR	MECH MECHANICAL	MEMB MEMBRANE
BLD BUILDING	BLDG BLOCKING	MEZZ MEZZANINE	MFR MANUFACTURER
BLKG BUILDING LINE	BSMT BASEMENT	MIN MINIMUM	MISC MISCELLANEOUS
BSMT BETWEEN	BY OTHERS	MO MOUNTED	MNT MOUNTED
C	CL COURSE (MASONRY)	MTL METAL	MB MARKER BOARD
CER CERAMIC	CG CORNER GUARD	N	NORTH
CH COAT HOOK	CJ CONTROL JOINT	N# NUMBER	NI NOT IN CONTACT
CL CENTER LINE	CLG CEILING	NOM NOMINAL DIMENSION	NTS NOT TO SCALE
CLG CONCRETE MASONRY UNIT	CO CLEAN OUT	O	ON/OVER
COL COLUMN	CONC CONCRETE	ON CENTER	OD OUTSIDE DIAMETER/OUTSIDE DIMENSION
COND CONDITION	CONN CONNECTION	OFF OFFICE	OPG OPENING
CONN CONNECTION	CONT CONTINUOUS	OPP OPPOSITE	OSH ORIENTED STRAND BOARD
CONT CONTINUOUS	CORR CORROSION	OSB ORIENTED STRAND BOARD	OZ OUNCE
CT CERAMIC TILE	CUH CABINET UNIT HEATER	P	PBO/BC PURCHASED BY OWNER INSTALLED BY CONTRACTOR
D	DBL DOUBLE	PC PRECAST	PL PLATE
DF DRINKING FOUNTAIN	DIA DIAMETER	PLAM PLASTIC LAMINATE	PR PAIR
DIFF DIFFUSER	DIM DIMENSION	PRE FAB PREFABRICATE	PRIV PRIVACY
DN DOWN	DR DOOR	PRIM PRIMED	PSF POUNDS PER SQUARE FOOT
DR DOOR	DSP DRY STAND PIPE	PTD PAINTED	PTN PARTITION
DWG DRAWING	E	PVC POLYVINYL CHLORIDE	PWD PLYWOOD
E	EA EAST	PERF PRESSURE TREATED	PERF PERFECTED
EACH EACH	ELEV ELEVATION	Q	QT QUARRY TILE
ELEC ELECTRICAL	ELEV ELEVATOR	QTR QUARTER	R
ENTR ENTRANCE	EQ EQUAL	R	RISER/RADIUS
EQU EQUIPMENT	EXP EXPANSION	RAD RADIUS	RUB RUBBER BASE
EXP EXPANSION BOLT	EXT EXTERIOR	RCP REFLECTED CEILING PLAN	RD ROOF DRAIN
EXT EXTERIOR	EPDM ETHYLENE PROPYLENE DIENE MONOMER	REBAR REINFORCING BAR	REF REFRIGERATOR
EWC ELECTRIC WATER COOLER	F	REIN REINFORCED	REQ REQUIRED
F	FB FAHRENHEIT	RES RESILIENT	REV REVERSE
FB FLAT BAR	FC FIRE EXTINGUISHER AND CABINET	RM ROOM	RO ROUGH OPENING
FC FLOOR DRAIN	FD FIRE EXTINGUISHER	ROW RIGHT OF WAY	S
FE FIRE EXTINGUISHER	FEC FIRE EXTINGUISHER CABINET	S SCHEDULE	SF SQUARE FEET
FEW FIRE TREATED WOOD	FIN FINISH	SM SIMILAR	SPC SPECIFICATION
FL FLOOR	FB FACE OF BRICK	SO SQUARE	SST STAINLESS STEEL
FOF FACE OF FINISH	FC FACE OF CONCRETE	STC SOUND TRANSMISSION CLASS	STD STANDARD
FOS FACE OF STUDS	FOF FACE OF FINISH	STL STEEL	STOR STORAGE
FTG FOOTING	FTG FOOTING	STRU STRUCTURE/STRUCTURAL	SUSP SUSPENSION
FRG FIBER REINFORCED GYPSUM	FTG FOOTING	T	T&G TONGUE&GROOVE
FRG FIBER REINFORCED GYPSUM	FTG FOOTING	TEL TELEPHONE	THK THICK
FTR FIN TUBE RADIATION	FTG FOOTING	THK THICK	TOP TOP OF DECK
G	GA GAUGE	TOF TOP OF STEEL	TY TYPICAL
GALV GALVANIZED	GB GRAB BAR	TV TELEVISION	TB TACK BOARD
GB GRAB BAR	GC GENERAL CONTRACTOR	TOC TOP OF CONCRETE	U
GEI GROUND-Fault INTERRUPTER	GL GLASS/GLAZING/GLAZED	UL UNDERWRITERS LABORATORIES, INC.	UV UNIT VENTILATOR
GLAM GLASS LAMINATED WOOD	GND GROUND	V VCT VINYL COMPOSITION TILE	VERT VERTICAL
GND GROUND	GWB GYPSUM WALL BOARD	VIF VERIFY IN FIELD	VOL VOLUME
H	HB HOSE BIB	W	W WEST
HC HANDICAP	HM HOLLOW METAL	WO WITHOUT	W WITH
HORIZ HORIZONTAL	HP HORSE POWER/HIGH POINT/HEAT PUMP	W WOOD	WF WIDE FLANGE
HR HOUR	HW HEATING VENTILATION AIR CONDITIONING	WP WORK POINT	WT WEIGHT
I	ID INSIDE DIMENSION/INSIDE DIAMETER	V	VCT VINYL COMPOSITION TILE
IN INCHES	INFO INFORMATION	VERT VERTICAL	VIF VERIFY IN FIELD
INSUL INSULATION	J	VOL VOLUME	W
J	JST JOIST	W WEST	WO WITHOUT
JT JOINT	K	W WOOD	WF WIDE FLANGE
K	KD KILN-DRIED	WP WORK POINT	WT WEIGHT
KIP 1000 POUNDS			

FIRESTOPPING DETAILS



SPECIFICATIONS

WRAP STRIP: 1/4" THICK x 1 1/2" MINIMUM WIDTH INTUMESCENT MATERIAL WITH PLASTIC FILM FACING BOTH SIDES. TEMPORARILY SECURE WITH MASKING TAPE. SPECIFIED TECHNOLOGIES INC. (STI) "SpecSeal RED Wrap Strip" OR "SpecSeal BLU Wrap Strip" OR EQUAL.

STEEL COLLAR: WRAP STRIP MANUFACTURER'S STEEL COLLAR, FABRICATED FROM #16 INCH THICK GALVANIZED SHEET STEEL, WIDTH TO MATCH WRAP STRIP (1 1/2" MINIMUM), WITH 1 INCH x 2 INCH ANCHOR TABS AND RETAINER TABS. ANCHOR TABS TO BE SYMMETRICALLY OPPOSED AROUND COLLAR; PROVIDE 3 TABS FOR 2 1/2" AND 3" PIPE, PROVIDE 4 TABS FOR 4" PIPE.

INTUMESCENT SEALANT: ONE-PART, INTUMESCENT, LATEX ELASTOMER TESTED TO ASTM E 814. MINIMUM EXPANSION OF 3x AT 1000°F. 3M "FIRE BARRIER SEALANT CP 25WB" OR EQUAL.

FIRESTOP SEALANT: SINGLE COMPONENT NONCOMBUSTIBLE FIRE RATED SEALANT TESTED TO ASTM E 814. TESTED TO 3000°F. BOSS 136 FIRESTOP/DRAFT SEALANT" MANUFACTURED BY ACCUMETRIC, LLC, OR EQUAL.

SEALANT SCHEDULE:

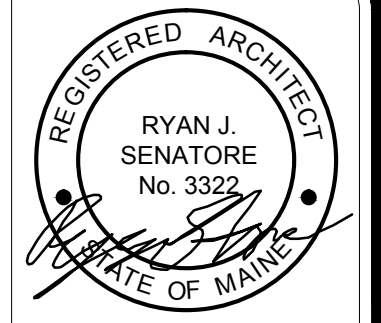
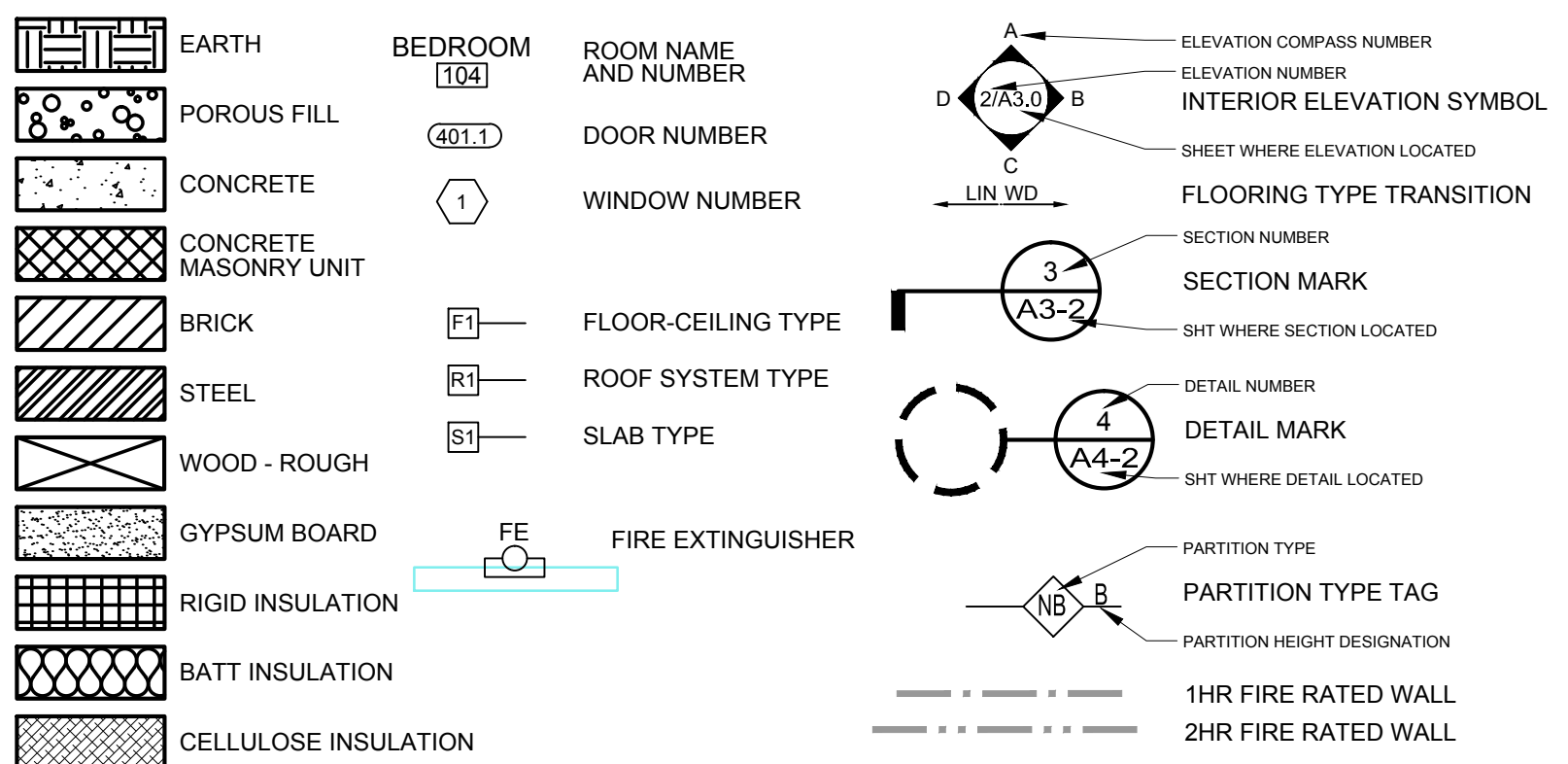
INTUMESCENT SEALANT: PROVIDE AT ALL PENETRATIONS THROUGH RATED CONSTRUCTION FOR PENETRATING ITEMS INCLUDING BUT NOT LIMITED TO: PVC PIPE; ROOF LEADER PIPES; GAS PIPES & LINES; SPRINKLER PIPES; ELECTRICAL & COMMUNICATIONS CABLES & WIRES; AND ALARM SYSTEM WIRES. DO NOT USE INTUMESCENT SEALANT AT DOMESTIC HOT WATER OR HYDRONIC HEATING SYSTEM PIPES.

FIRESTOP SEALANT: PROVIDE AT ALL PENETRATIONS THROUGH RATED CONSTRUCTION FOR PENETRATING ITEMS INCLUDING DOMESTIC HOT AND COLD WATER PIPES AND HYDRONIC HEATING SYSTEM PIPES.

NOTE:

FOR LOCATIONS OF RATED CONSTRUCTION, SEE ARCHITECTURAL FLOOR PLANS AND SECTIONS

DRAWING LEGEND



© 2016 RYAN SENATORE ARCHITECTURE

ADDITION TO BAYSIDE BOWL
ALDER STREET
PORTLAND, MAINE



RYAN SENATORE ARCHITECTURE
565 CONGRESS STREET
PORTLAND, MAINE 04101
207-656-6414
senatorearchitecture.com

CONSULTANTS:
STRUCTURAL: Structural Integrity
77 Oak Street
Portland, ME 04101
207-774-4944

REVISIONS:

DATE: JANUARY 29, 2016

PROJECT No. 1452

DRAWN BY: JPF / RRT / RJS

CHECKED BY: RJS

SCALE: AS NOTED

SHEET TITLE:
GENERAL NOTES
ABBREVIATIONS
LEGEND

G1-1