

© 2016 RYAN SENATORE ARCHITECTURE

ADDITION TO BAYSIDE BOWL
ALDER STREET
PORTLAND, MAINE



RYAN SENATORE ARCHITECTURE
 565 CONGRESS STREET
 PORTLAND, MAINE 04101
 207-650-6414
 senatorearchitecture.com

CONSULTANTS:
STRUCTURAL:
 Structural Integrity
 77 Oak Street
 Portland, ME 04101
 207-774-4814

REVISIONS:

DATE: JANUARY 29, 2016

PROJECT No. 1452

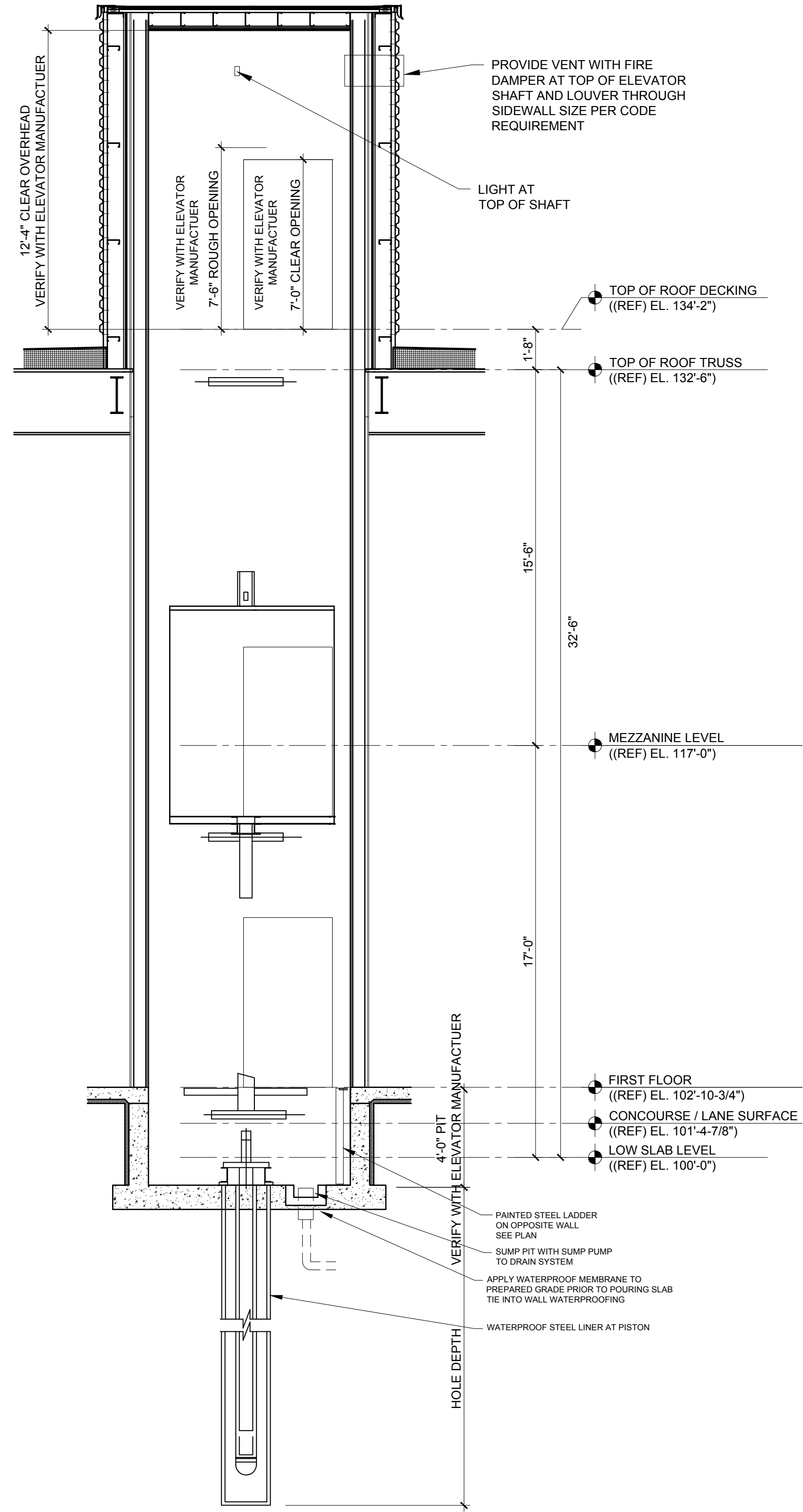
DRAWN BY: JPF / RRT / RJS

CHECKED BY: RJS

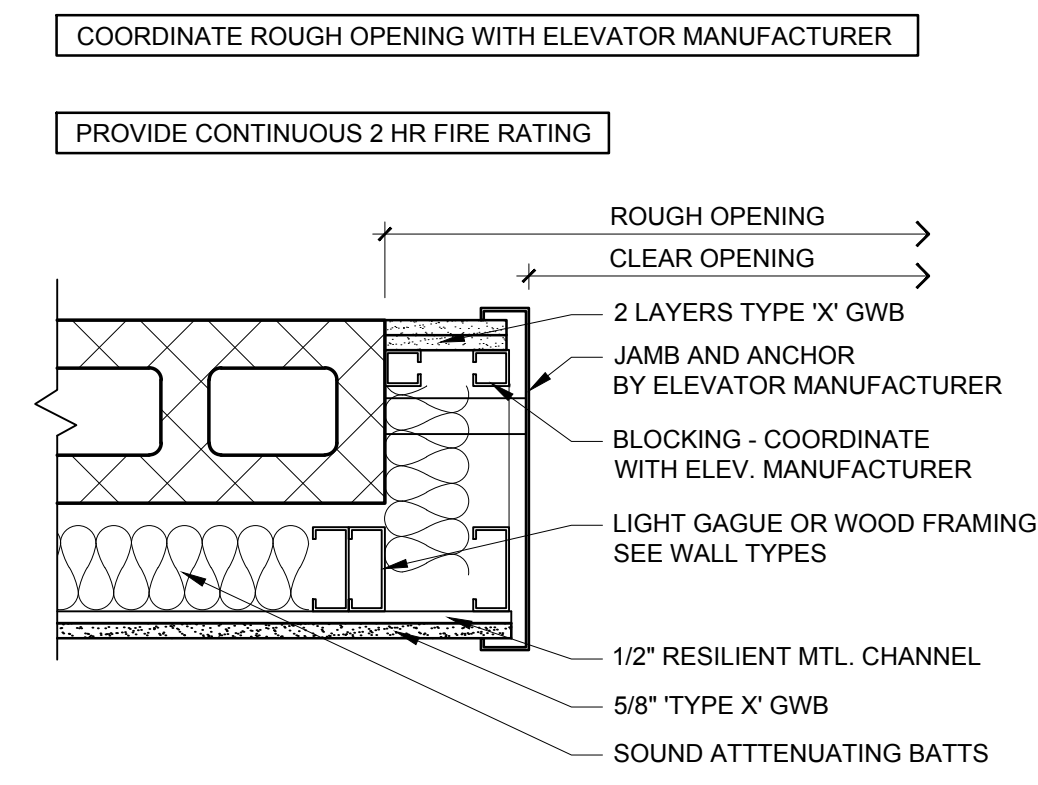
SCALE: AS NOTED

SHEET TITLE:
ELEVATOR DETAILS

A6-0

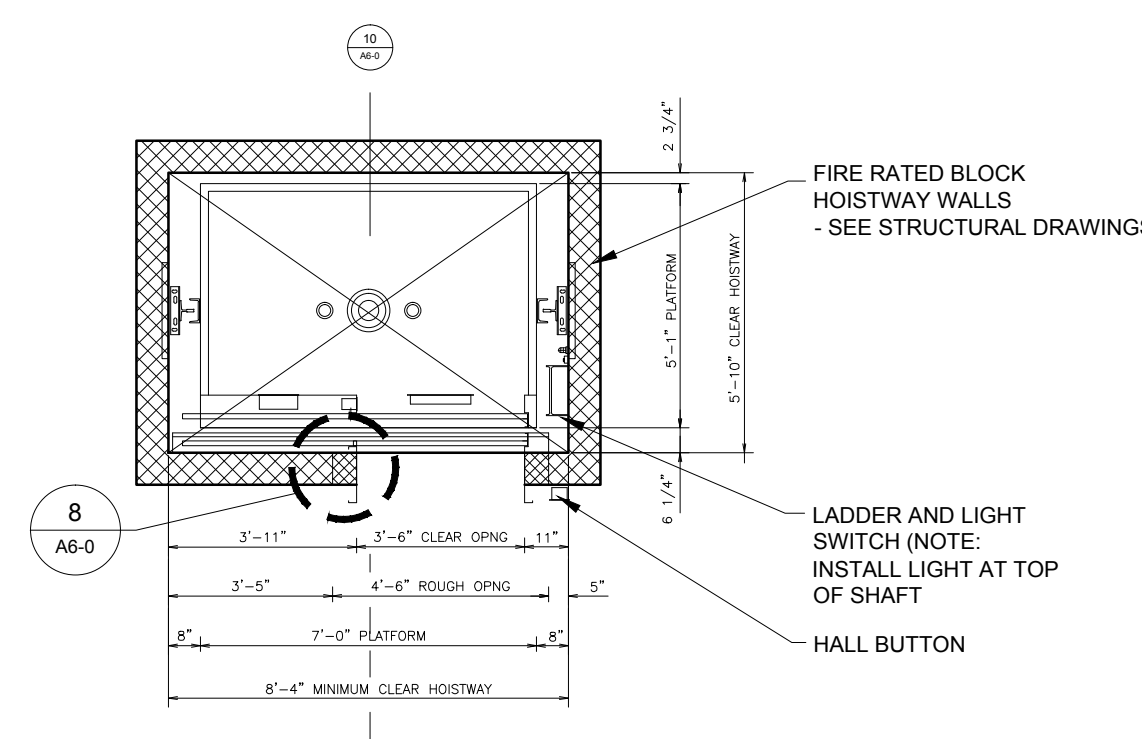


10 ELEVATOR SECTION
 1/4" = 1'-0"

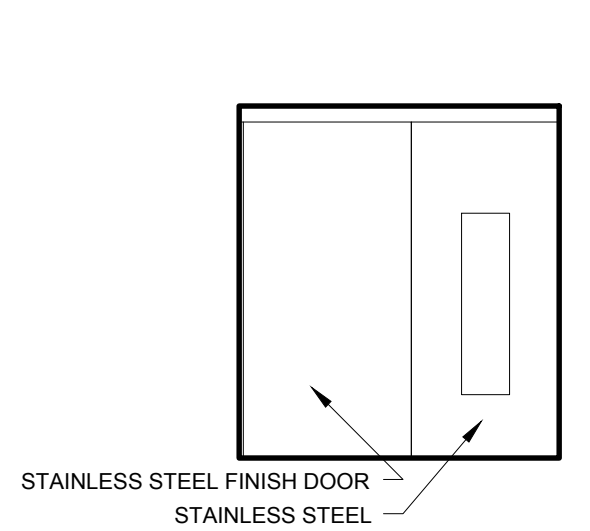


8 TYPICAL ELEVATOR JAMB PLAN DETAIL
 1-1/2" = 1'-0"

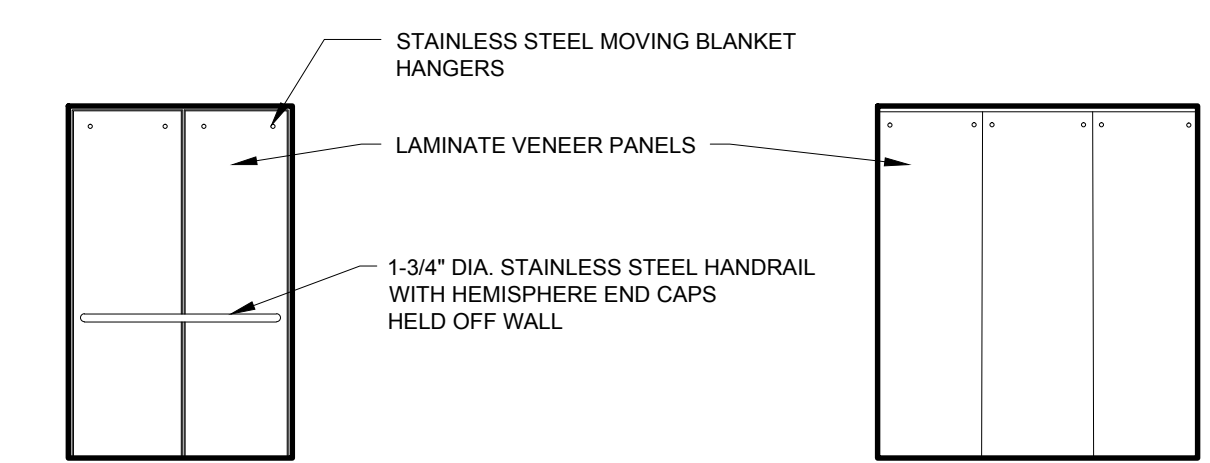
- ELEVATOR NOTES**
- LAYOUT BASED ON 2500LB HOLED HYDRAULIC ELEVATOR
 - COORDINATE BLOCKWORK WITH ELEVATOR MANUFACTURERS HOISTWAY REQUIREMENTS
 - COORDINATE ROUGH OPENINGS WITH ELEVATOR MANUFACTURERS HOISTWAY REQUIREMENTS
 - ELEVATOR MUST MEET ADA ACCESSIBILITY REQUIREMENTS



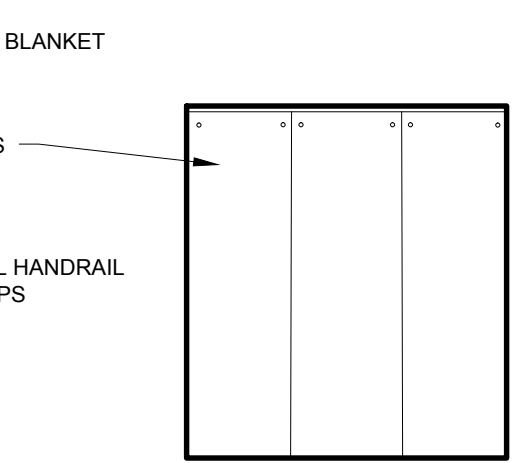
9 ELEVATOR FLOOR PLAN
 1/4" = 1'-0"



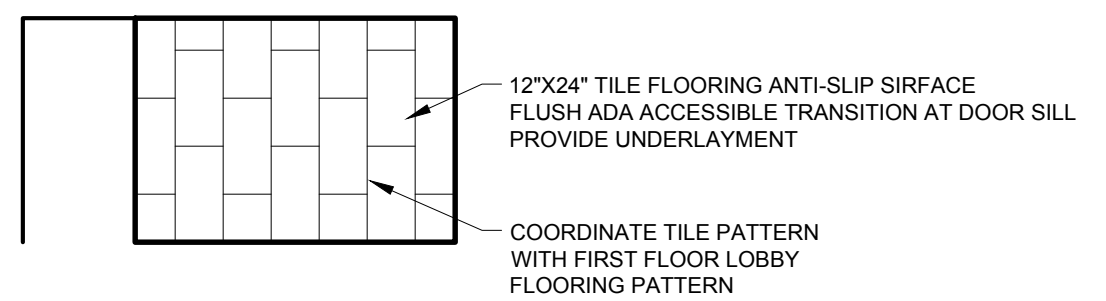
4 FRONT CAB ELEVATION
 1/4" = 1'-0"



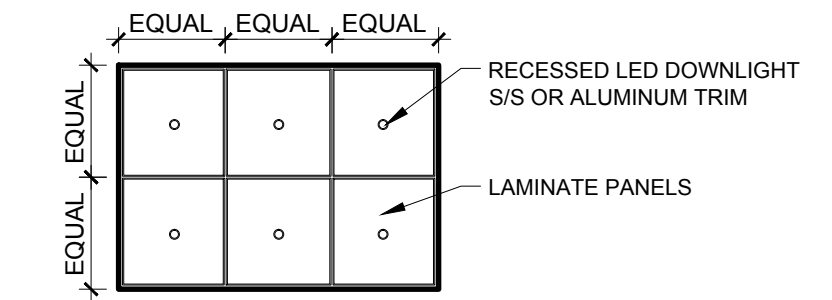
3 SIDE CAB ELEVATION
 1/4" = 1'-0"



2 REAR CAB ELEVATION
 1/4" = 1'-0"



5 FLOORING PLAN
 1/4" = 1'-0"



1 ELEVATOR REFLECTED CEILING PLAN
 1/4" = 1'-0"