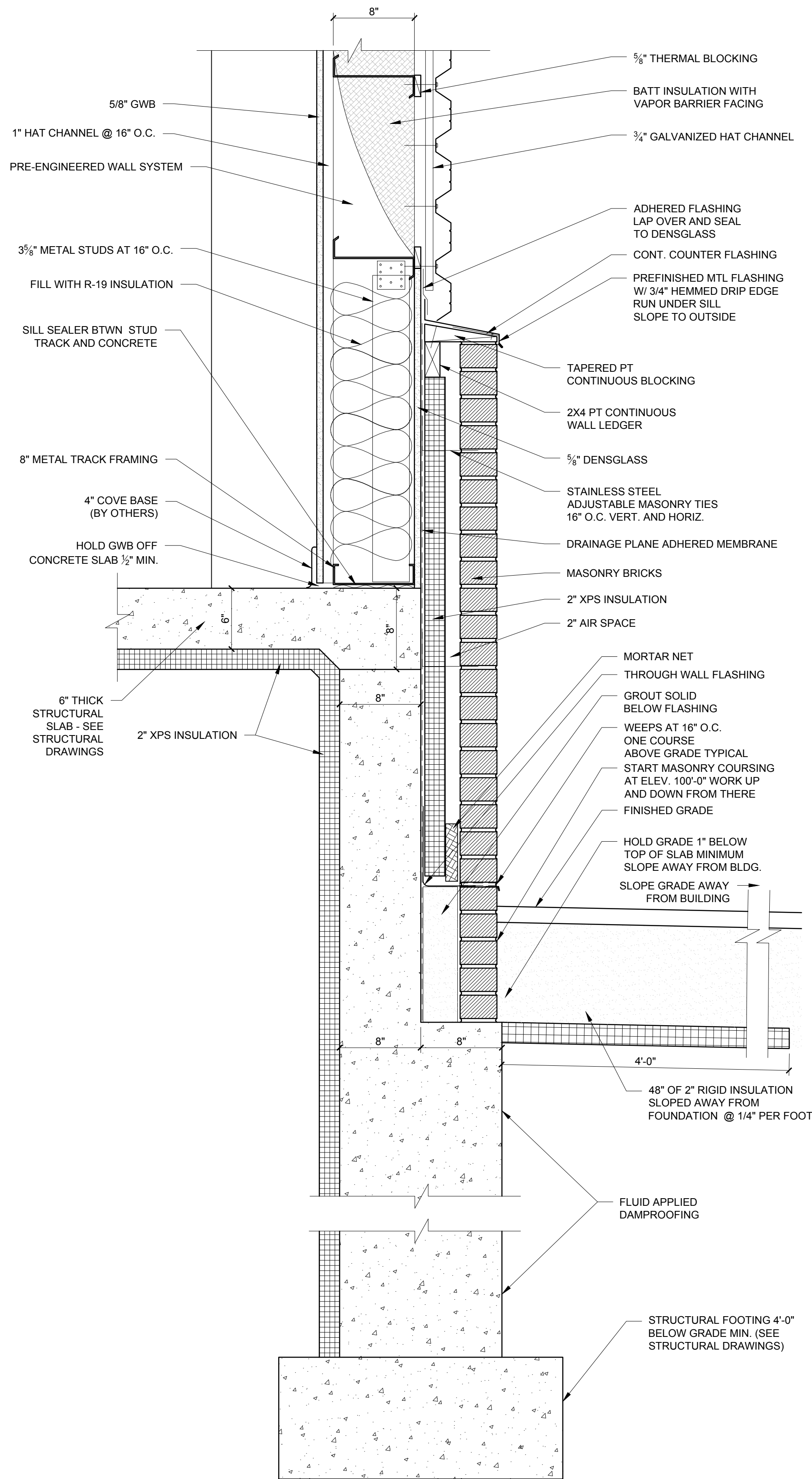
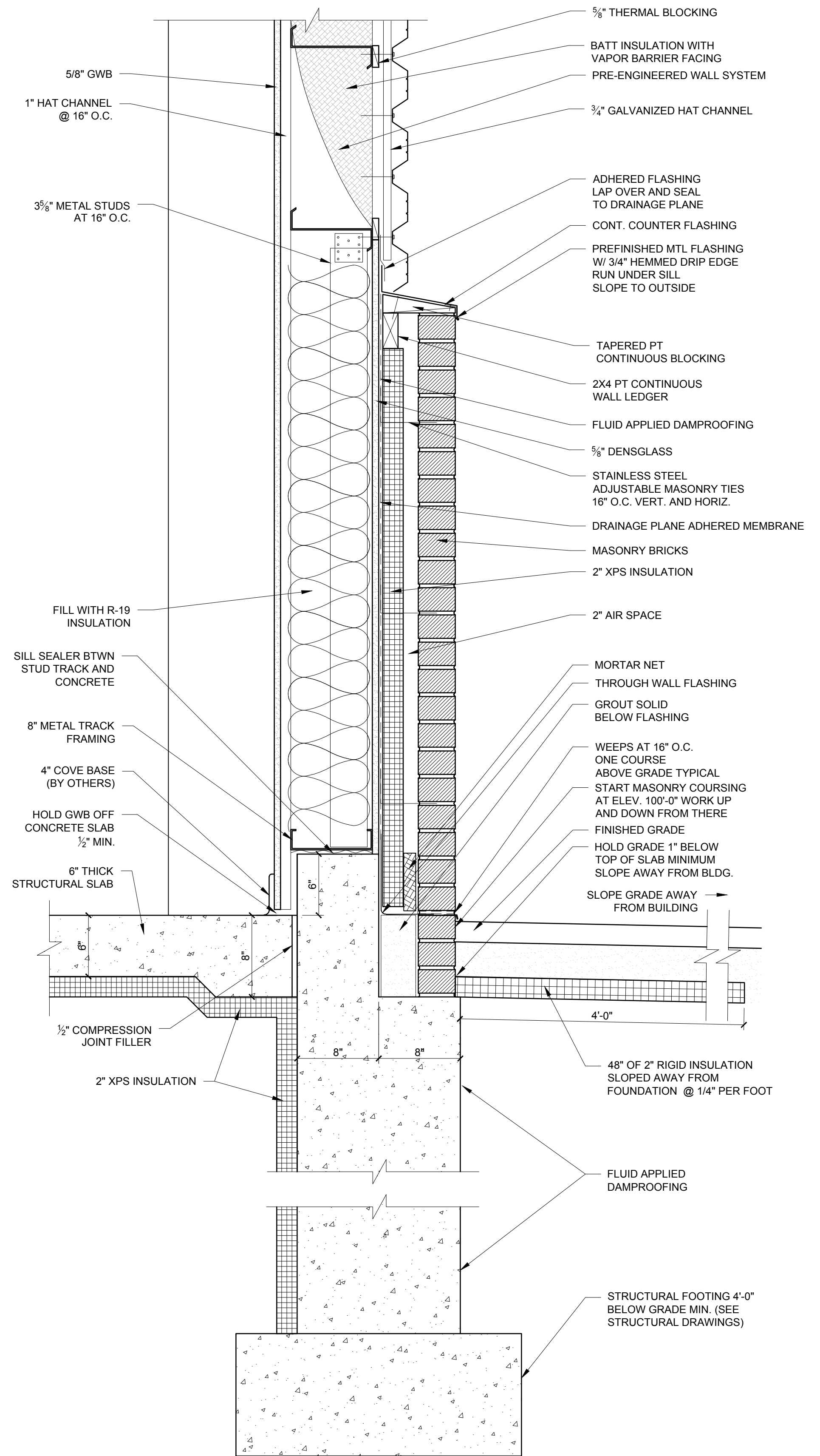


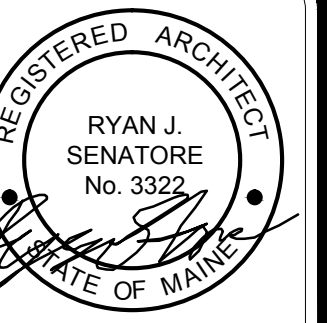
3 FOUNDATION DETAIL AT WINDOW LOCATION  
1:12" = 1'-0"



2 FOUNDATION DETAIL AT BACKSIDE OF BUILDING  
1:12" = 1'-0"



1 FOUNDATION DETAIL NEAR ENTRY LOCATION  
1:12" = 1'-0"



© 2016 RYAN SENATORE ARCHITECTURE

**ADDITION TO BAYSIDE BOWL**  
**ALDER STREET**  
 PORTLAND, MAINE



**RYAN SENATORE ARCHITECTURE**  
 565 CONGRESS STREET  
 PORTLAND, MAINE 04101  
 207-656-6414  
 senatorearchitecture.com

CONSULTANTS:  
 STRUCTURAL:  
 Structural Integrity  
 77 Oak Street  
 Portland, ME 04101  
 207-774-4814

REVISIONS:

1452

DATE: JANUARY 29, 2016

PROJECT No.

DRAWN BY: JPF / RRT / RJS

CHECKED BY: RJS

SCALE: AS NOTED

SHEET TITLE: DETAILS

A5-0