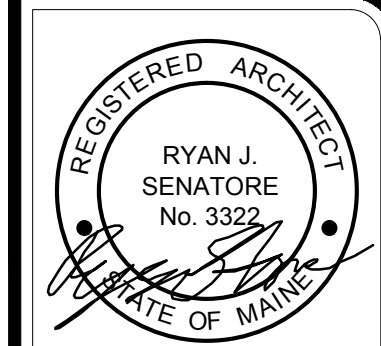
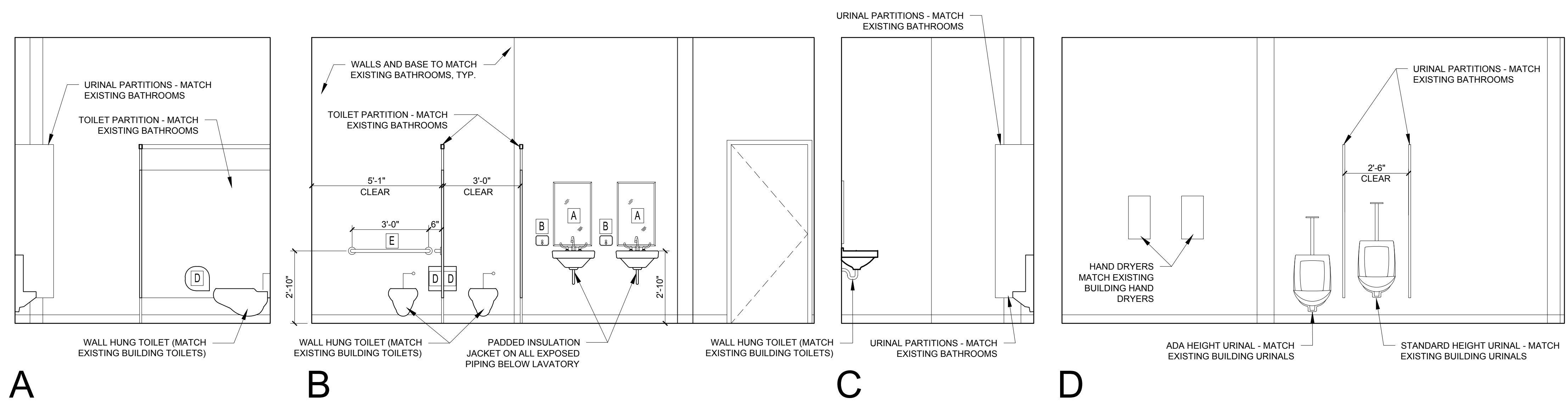
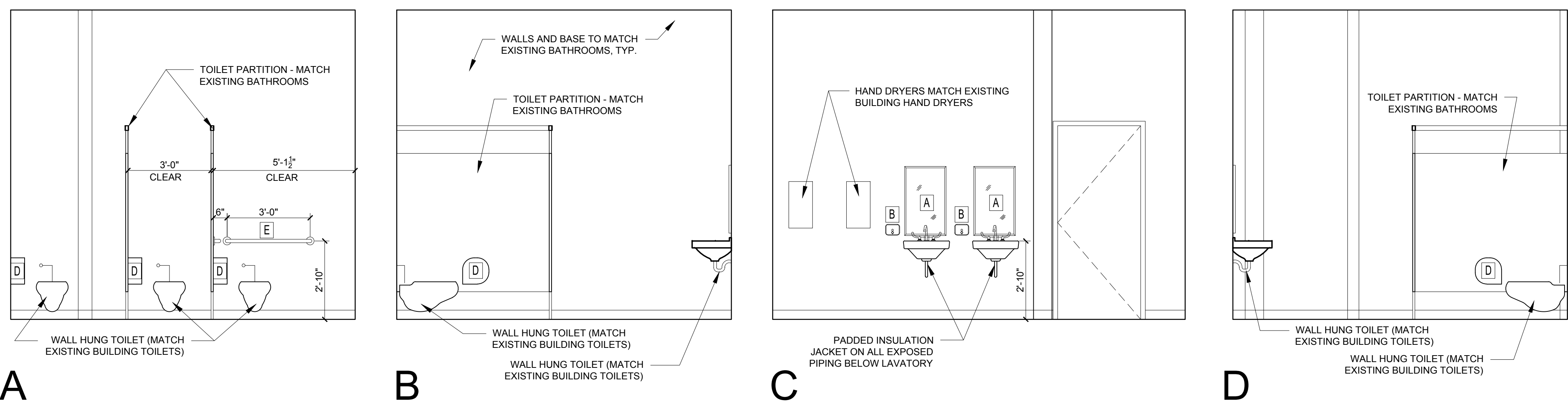


NOTES

1. WHEN GIVEN A RANGE OF DIMENSIONS FOR PLACEMENT, PLACE ALL FIXTURES OF SAME TYPE AT THE SAME ELEVATION THROUGHOUT, UNLESS OTHERWISE DIRECTED.
2. MIRRORS TO BE CENTERED OVER SINKS
3. PROVIDE APPROPRIATE BLOCKING IN WALLS BEHIND ALL FIXTURES, PARTITIONS, AND ACCESSORIES.

TOILET ACCESSORIES KEY

- A MIRROR 18" x 36" NOM.
- B SOAP DISPENSER - PBOIBC
- C NOT USED
- D TOILET PAPER DISPENSER
- E GRAB BAR 36" (1 1/4" TO 1 1/2" O.D.)
- F GRAB BAR 42" (1 1/4" TO 1 1/2" O.D.)
- G NOT USED
- H GRAB BAR 18" (1 1/4" TO 1 1/2" O.D.)



© 2016 RYAN SENATORE ARCHITECTURE

ADDITION TO BAYSIDE BOWL
ALDER STREET
PORTLAND, MAINE



RYAN SENATORE ARCHITECTURE
565 CONGRESS STREET
PORTLAND, MAINE 04101
207-650-6414
senatorearchitecture.com

CONSULTANTS:
STRUCTURAL: Structural Integrity
77 Oak Street
Portland, ME 04101
207-774-4614

REVISIONS:

DATE: JANUARY 29, 2016

PROJECT No. 1452

DRAWN BY: JPF / RRT / RJS

CHECKED BY: RJS

SCALE: AS NOTED

SHEET TITLE:

INTERIOR ELEVATIONS

A4-0