

© 2016 RYAN SENATORE ARCHITECTURE

ADDITION TO BAYSIDE BOWL
ALDER STREET
PORTLAND, MAINE



RYAN SENATORE ARCHITECTURE
 565 CONGRESS STREET
 PORTLAND, MAINE 04101
 207-656-6414
 senatorearchitecture.com

CONSULTANTS:
STRUCTURAL:
 Structural Integrity
 77 Oak Street
 Portland, ME 04101
 207-774-4814

REVISIONS:

DATE: JANUARY 29, 2016

PROJECT No. 1452

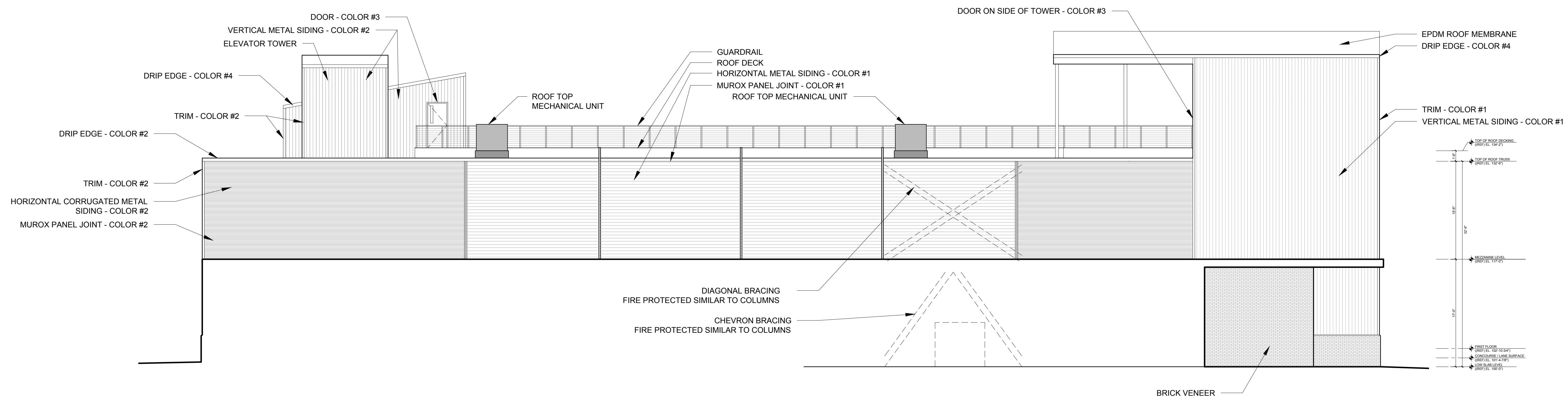
DRAWN BY: JPF / RRT / RJS

CHECKED BY: RJS

SCALE: AS NOTED

SHEET TITLE:
NORTH ELEVATION

A2-3



1 NORTH ELEVATION
 1/8" = 1'-0"

MATERIALS KEY			
ITEM	MANUF.	PROFILE	COLOR
HORIZONTAL METAL SIDING COLOR #1	CENTRIA	IW-20A, 20 GUAGE (NO INTERMEDIARY FLUTE) (CONCEALED FASTENERS)	SILVER SMITH #9946
HORIZONTAL METAL SIDING COLOR #3	CENTRIA	IW-20A, 20 GUAGE (NO INTERMEDIARY FLUTE) (CONCEALED FASTENERS)	RICH BLACK #9916
HORIZONTAL CORRUGATED METAL SIDING COLOR #2	MBCI	7.2 PANEL, 26 GUAGE (EXPOSED FASTENERS)	SLATE GRAY
FIN COLOR #4			CUSTOM ORANGE R:227, G:126, B:30
VERTICAL SIDING COLOR #1	CENTRIA	IW-20A, 20 GUAGE (NO INTERMEDIARY FLUTE) (CONCEALED FASTENERS)	SILVER SMITH #9946
WINDOWS AND WINDOW SCREEN COLOR #3			BLACK
BRICK VENEER	MORIN	ACADEMY SMOOTH NARROW FLASHED RANGE	RED