

© 2016 RYAN SENATORE ARCHITECTURE

**ADDITION TO BAYSIDE BOWL**  
**ALDER STREET**  
**PORTLAND, MAINE**



**RYAN SENATORE ARCHITECTURE**  
 565 CONGRESS STREET  
 PORTLAND, MAINE 04101  
 207-656-6414  
 senatorearchitecture.com

CONSULTANTS:  
**STRUCTURAL:**  
 Structural Integrity  
 77 Oak Street  
 Portland, ME 04101  
 207-774-4814

REVISIONS:

DATE: JANUARY 29, 2016

PROJECT No. 1452

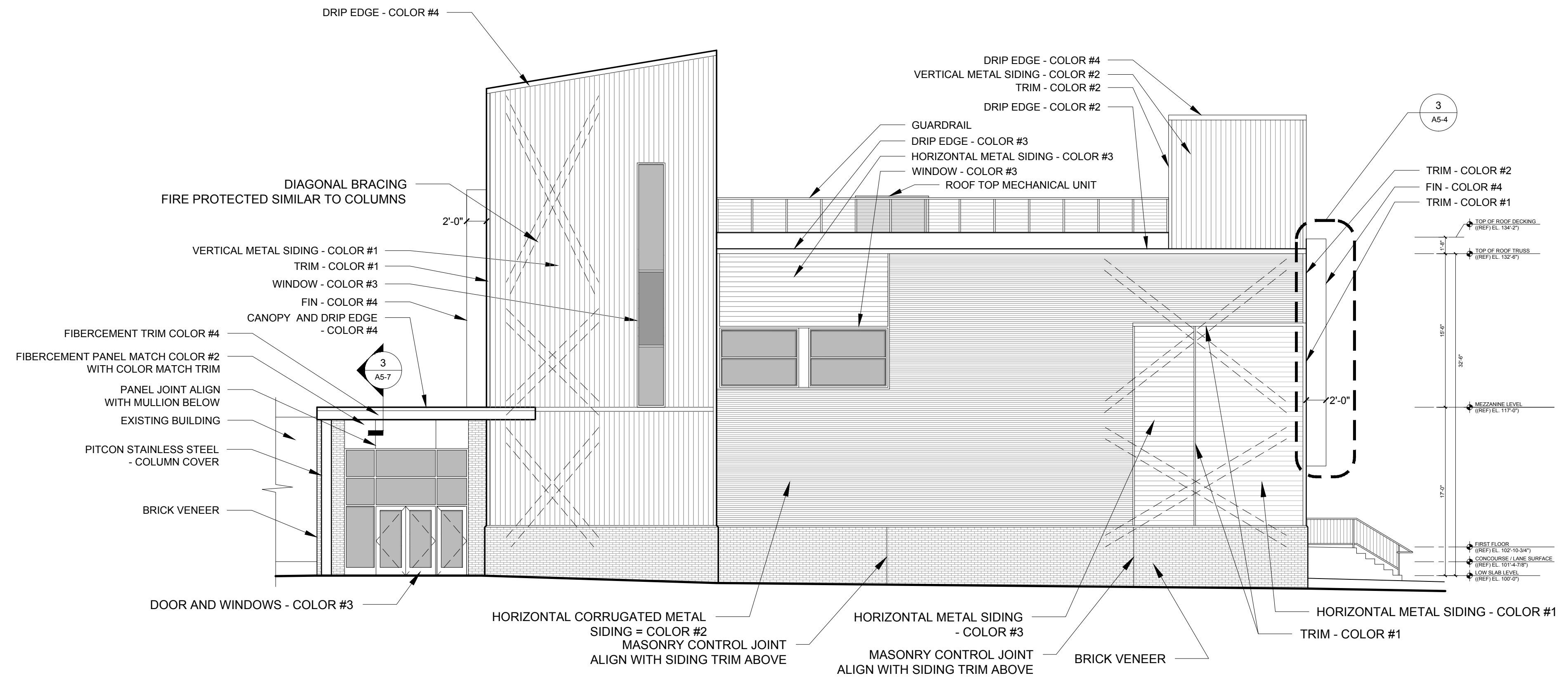
DRAWN BY: JPF / RRT / RJS

CHECKED BY: RJS

SCALE: AS NOTED

SHEET TITLE:  
**WEST ELEVATION**

**A2-2**



**1 WEST ELEVATION**  
 1/8" = 1'-0"

MATERIALS KEY			
ITEM	MANUF.	PROFILE	COLOR
HORIZONTAL METAL SIDING COLOR #1	CENTRIA	IW-20A, 20 GAUGE (NO INTERMEDIARY FLUTE) (CONCEALED FASTENERS)	SILVER SMITH #9946
HORIZONTAL METAL SIDING COLOR #3	CENTRIA	IW-20A, 20 GAUGE (NO INTERMEDIARY FLUTE) (CONCEALED FASTENERS)	RICH BLACK #9916
HORIZONTAL CORRUGATED METAL SIDING COLOR #2	MBCI	7.2 PANEL, 26 GAUGE (EXPOSED FASTENERS)	SLATE GRAY
FIN COLOR #4			CUSTOM ORANGE R:227, G:126, B:30
VERTICAL SIDING COLOR #1	CENTRIA	IW-20A, 20 GAUGE (NO INTERMEDIARY FLUTE) (CONCEALED FASTENERS)	SILVER SMITH #9946
WINDOWS AND WINDOW SCREEN COLOR #3			BLACK
BRICK VENEER	MORIN	ACADEMY SMOOTH NARROW FLASHED RANGE	RED