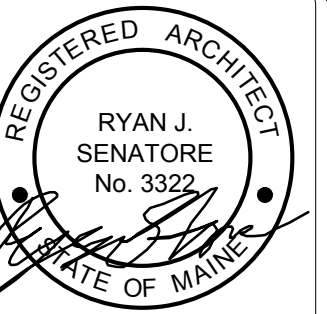


**REFLECTED CEILING PLAN NOTES**

- 1) SEE ELECTRICAL, MECHANICAL AND SPRINKLER DRAWINGS FOR LOCATIONS OF LIGHTING, EMERGENCY EXIT SIGNS EMERGENCY LIGHTING, MECHANICAL ELEMENTS (DUCTS, VENTS, ETC), SPRINKLER HEADS.
- 2) G.C. TO ADJUST CEILING GRID AS REQUIRED TO ACCOMMODATE LIGHTING AND MECHANICAL ELEMENTS
- 3) G.C. TO COORDINATE CEILING LAYOUT WITH TENANT FIT-UP WORK



© 2016 RYAN SENATORE ARCHITECTURE

**ADDITION TO BAYSIDE BOWL**  
ALDER STREET  
PORTLAND, MAINE



**RYAN SENATORE ARCHITECTURE**  
565 CONGRESS STREET  
PORTLAND, MAINE 04101  
207-650-6414  
senatorearchitecture.com

**CONSULTANTS:**  
**STRUCTURAL:**  
Structural Integrity  
77 Oak Street  
Portland, ME 04101  
207-774-4614

**REVISIONS:**

DATE: JANUARY 29, 2016

PROJECT No. 1452

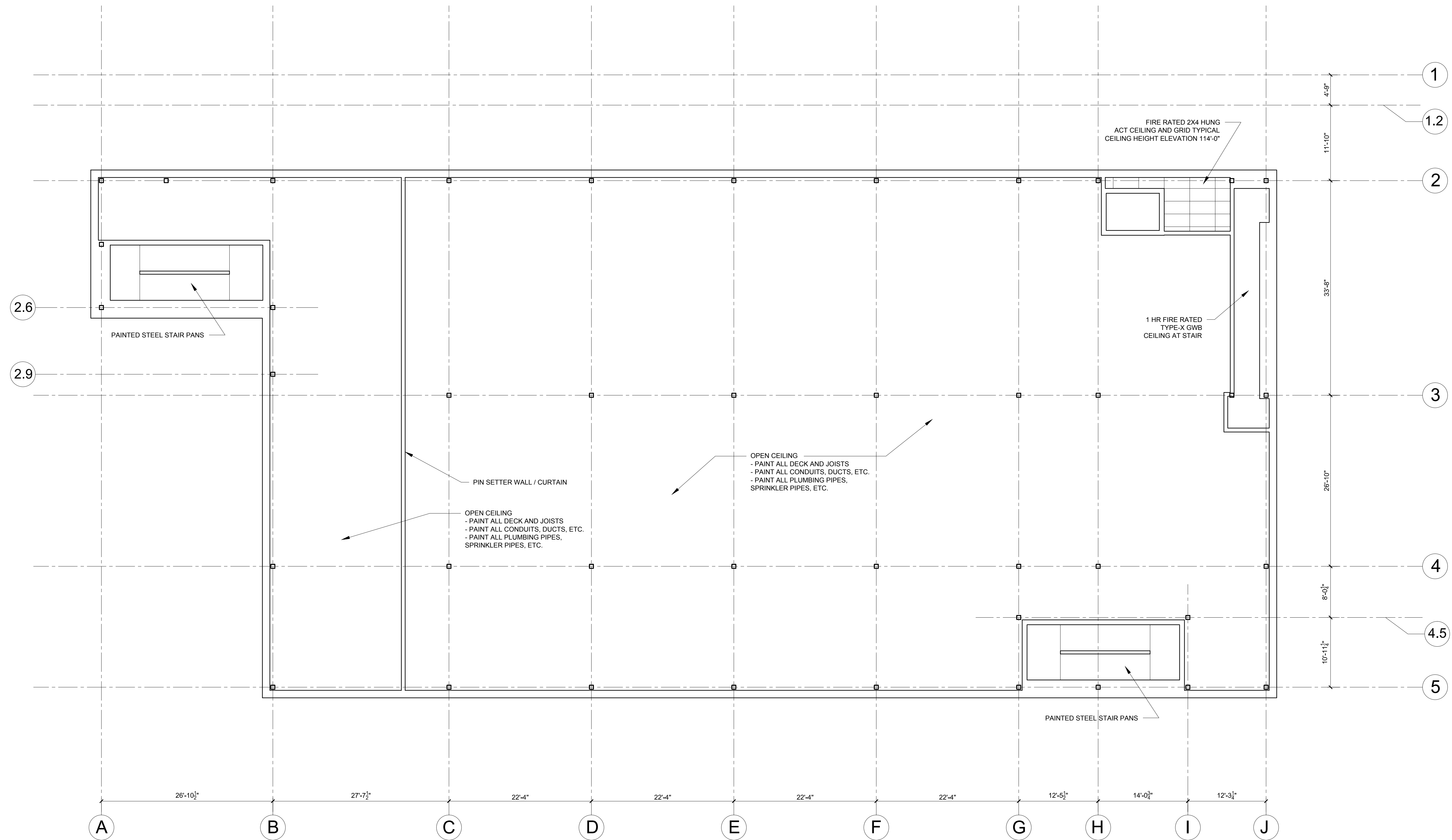
DRAWN BY: JPF / RRT / RJS

CHECKED BY: RJS

SCALE: AS NOTED

**SHEET TITLE:**  
**MEZZANINE LEVEL REFLECTED CEILING PLAN**

**A1-6**



1 MEZZANINE LEVEL REFLECTED CEILING PLAN  
1/8" = 1'-0"