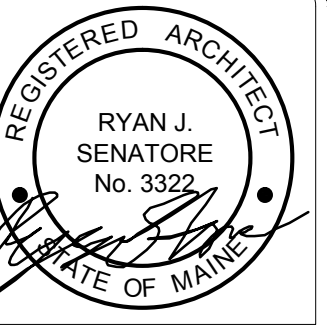


REFLECTED CEILING PLAN NOTES

- 1.) SEE ELECTRICAL, MECHANICAL AND SPRINKLER DRAWINGS FOR LOCATIONS OF LIGHTING, EMERGENCY EXIT SIGNS EMERGENCY LIGHTING, MECHANICAL ELEMENTS (DUCTS, VENTS, ETC), SPRINKLER HEADS.
- 2.) G.C. TO ADJUST CEILING GRID AS REQUIRED TO ACCOMMODATE LIGHTING AND MECHANICAL ELEMENTS
- 3.) G.C. TO COORDINATE CEILING LAYOUT WITH TENANT FIT-UP WORK



© 2016 RYAN SENATORE ARCHITECTURE

ADDITION TO BAYSIDE BOWL
ALDER STREET
PORTLAND, MAINE



RYAN SENATORE ARCHITECTURE
565 CONGRESS STREET
PORTLAND, MAINE 04101
207-650-6414
senatorearchitecture.com

CONSULTANTS:
STRUCTURAL:
Structural Integrity
77 Oak Street
Portland, ME 04101
207-774-4614

REVISIONS:

DATE: JANUARY 29, 2016

PROJECT No. 1452

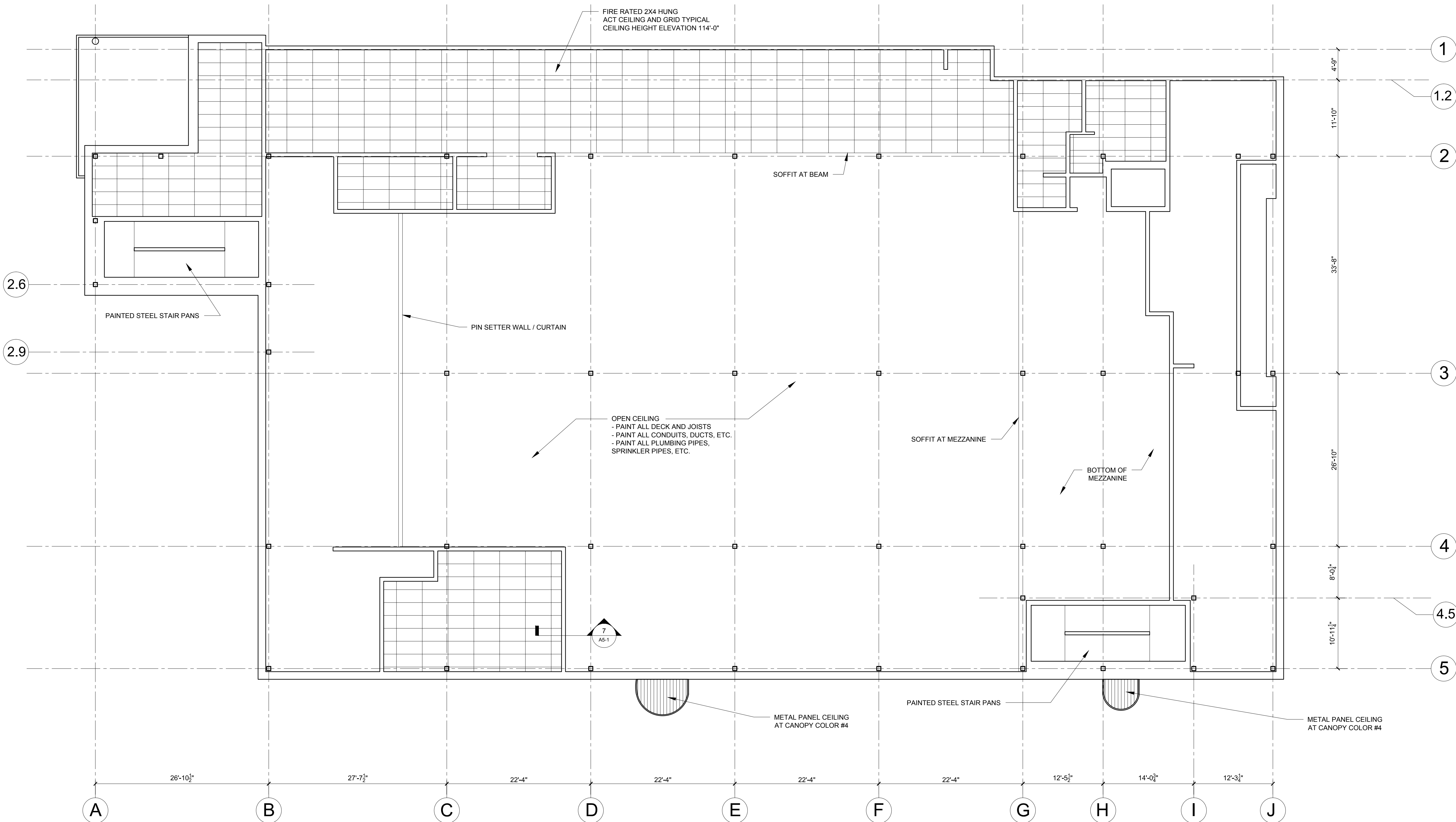
DRAWN BY: JPF / RRT / RJS

CHECKED BY: RJS

SCALE: AS NOTED

SHEET TITLE:
FIRST FLOOR REFLECTED CEILING PLAN

A1-5



1 FIRST FLOOR REFLECTED CEILING PLAN
1/8" = 1'-0"