

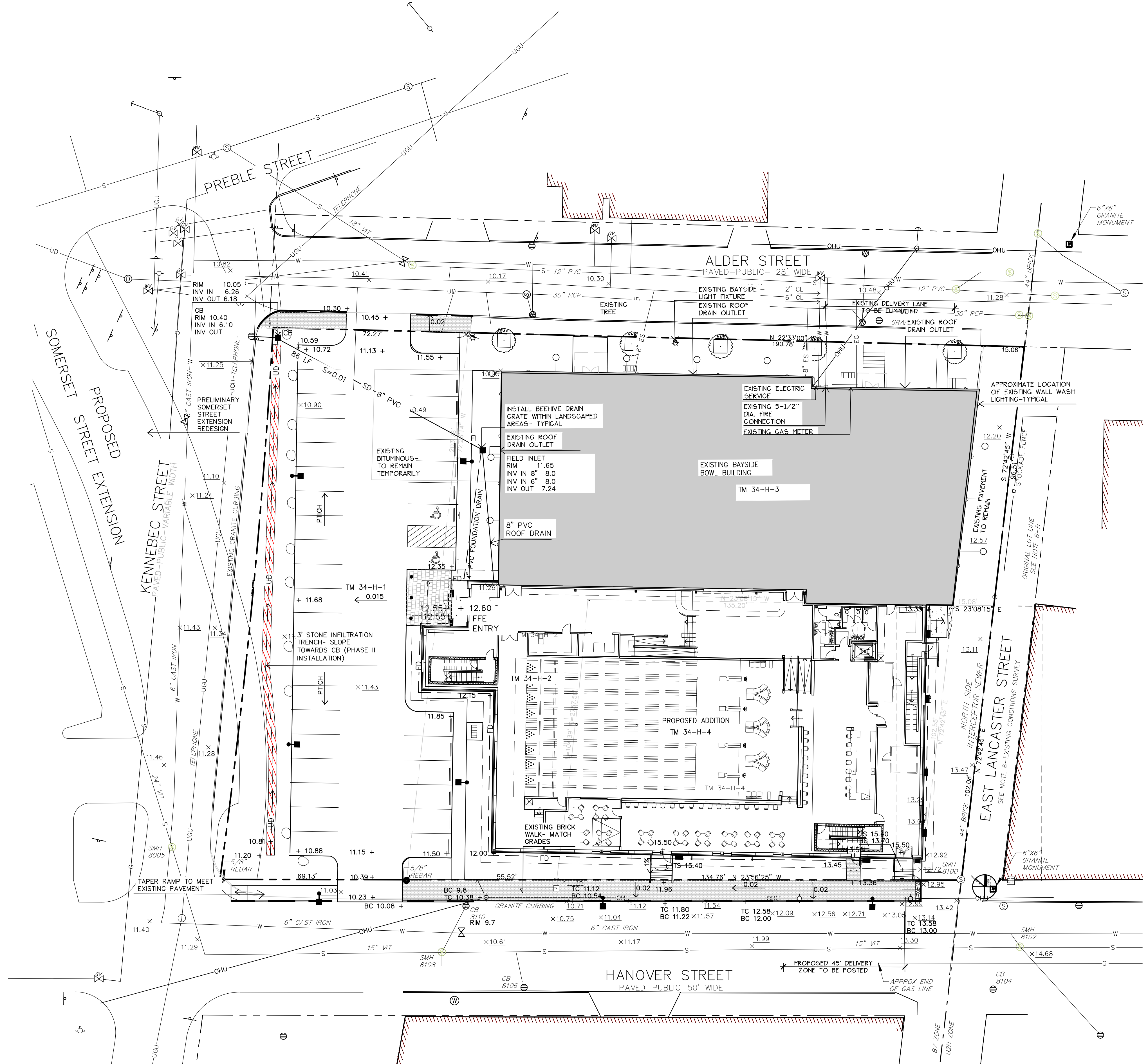
GRADING AND DRAINAGE NOTES:

- DO NOT SCALE THESE DRAWINGS. ANY DISCREPANCIES BETWEEN DRAWINGS, DETAILS, NOTES AND SPECIFICATIONS SHALL BE IMMEDIATELY REPORTED TO THE LANDSCAPE ARCHITECT FOR FURTHER DIRECTION AND RESOLUTION BEFORE ADDITIONAL WORK PROCEEDS.
- CONTRACTOR SHALL VERIFY ALL DIMENSIONS AND GRADES ON THE GROUND. ANY DISCREPANCIES SHALL BE REPORTED IMMEDIATELY TO THE LANDSCAPE ARCHITECT FOR DIRECTION AND RESOLUTION PRIOR TO ANY FURTHER WORK.
- CONTRACTOR SHALL FIELD VERIFY LOCATION AND DEPTH OF ALL EXISTING UTILITIES WITH THE APPROPRIATE UTILITY COMPANIES PRIOR TO EXCAVATION OF OR INSTALLATION OF ANY PART OF THIS WORK.
- CONTRACTOR SHALL AVOID ALL AREAS NOT REQUIRING GRADING. CONTRACTOR SHALL NOT DISTURB THESE AREAS.
- THE UNDERGROUND UTILITIES SHOWN HAVE BEEN LOCATED FROM FIELD SURVEY INFORMATION AND EXISTING DRAWINGS. THE SURVEYOR MAKES NO GUARANTEES THAT THE UNDERGROUND UTILITIES SHOWN COMPRISE ALL SUCH UTILITIES IN THE AREA, EITHER IN SERVICE OR ABANDONED. THE SURVEYOR FURTHER DOES NOT WARRANT THAT THE UNDERGROUND UTILITIES SHOWN ARE IN THE EXACT LOCATION INDICATED ALTHOUGH HE DOES CERTIFY THAT THEY ARE LOCATED AS ACCURATELY AS POSSIBLE FROM INFORMATION AVAILABLE. THE SURVEYOR HAS NOT PHYSICALLY LOCATED THE UNDERGROUND UTILITIES. CALL DIGSAFE (1-888-344-7233) AT LEAST THREE BUSINESS DAYS BEFORE PERFORMING ANY CONSTRUCTION.
- CONTRACTOR SHALL CONDUCT TEST PIT EXCAVATION TO CONFIRM LOCATION OF EXISTING UTILITIES WHERE NEW BUILDING SANITARY SERVICE AND WATER SERVICE ARE PROPOSED.
- WHERE STORM DRAINS OR SEWER MAINS HAVE LESS THAN FOUR (4) FEET OF COVER BETWEEN TOP OF PIPE AND FINISH GRADE, INSULATE PIPE USING TWO (2) INCH THICK STYROFOAM INSULATION BOARD OVER AND ALONG SIDES OF THE PIPE.
- EXISTING DRAINAGE MANHOLES SHALL BE CORED TO ACCEPT NEW DRAINAGE PIPES AS NOTED.
- PIPE LENGTH EQUALS THE CENTER TO CENTER DISTANCES BETWEEN CATCH BASINS AND/OR MANHOLES MINUS ONE-HALF OF THE DIAMETER OF EACH CATCH BASIN OR MANHOLE.
- ROOF DRAIN CONNECTIONS SHALL BE CONFIRMED WITH FINAL BUILDING PLANS.
- ALL UTILITIES SHALL BE INSTALLED IN CONFORMANCE WITH INDIVIDUAL UTILITY DISTRICT REQUIREMENTS; CONTRACTOR SHALL COORDINATE INSTALLATION WITH APPROPRIATE UTILITY DISTRICT BEFORE INSTALLATION.
- ALL WORK WITHIN THE ROAD RIGHT-OF-WAY AND ALL UTILITIES CONNECTING TO INFRASTRUCTURE WITHIN THE ROAD SHALL MEET CITY OF PORTLAND TECHNICAL MANUAL STANDARDS.
- DISCONTINUED UTILITY SERVICES INCLUDING SANITARY SEWER SHALL BE PERMANENTLY CAPPED CONFORMING TO CITY OF PORTLAND STANDARDS. CONTRACTOR SHALL COORDINATE WITH PUBLIC SERVICES.
- UTILITIES SHOWN ARE BASED ON THE REFERENCED PLANS AND A FIELD SURVEY OF VISIBLE STRUCTURES PERFORMED IN FEBRUARY 2015. DURING THE FIELD SURVEY THERE WAS SNOW IN EXCESS OF THREE FEET DEEP AND ASSOCIATED ICE THAT MADE VERIFICATION DIFFICULT. A SITE VISIT TO VERIFY UTILITIES IS RECOMMENDED ONCE SNOW COVER IS GONE.

STRUCTURES

LEGEND

	EXISTING	PROPOSED
SMH 8108 RIM=10.6 8" VIT INV IN=5.7 12" VIT INV IN=4.5 12" VIT INV OUT=4.4 SHELF=4.8		
CB 8110 RIM=9.7 8" VIT INV OUT=5.7 SUMP=4.0		
SMH 8102 RIM=14.3 15" CMP INV IN=6.9 18" VIT INV IN=8.6 15" VIT INV IN=6.2 15" VIT INV OUT=6.1 SHELF=6.9		
SMH 8115 RIM=11.1 44" BRICK INV IN=4.0 44" BRICK INV IN=3.9 TOP WEIR=5.9 30" RCP INV OUT=3.2		
CB 8284 RIM=9.9 12" PVC INV IN=6.2 12" PVC INV OUT=5.0 SUMP=1.6		
CB 8290 RIM=9.5 8" PVC INV IN=5.4 12" PVC INV OUT=4.3 SUMP=1.7		
DMH 8288 RIM=9.8 30" RCP INV IN=1.7 12" PVC INV IN=3.8 30" RCP INV OUT=1.6 SHELF=3.9		
SMH 8125 RIM=10.1		
CB 8106 RIM=10.1		
CB 8104 RIM=13.4		
SMH 8005 RIM= 11.4		
SMH 8100 RIM=11.9		
SMH 8113 RIM=11.1		
SMH 8118 RIM=11.1		
SMH 8122 RIM=10.8		
CB 8286 RIM=9.8		
PROPERTY LINE		
GRANITE MONUMENT		
IRON PIN		
CATCHBASIN		
MANHOLE		
HYDRANT		
UTILITY POLE		
WATER VALVE		
SANITARY SEWER		
STORM DRAIN		
WATER		
TELEPHONE		
GAS		
CURB		
FENCE		
SIGN		
DECIDUOUS TREE		
EVERGREEN TREE		
PIPE BOLLARD		
BIKE HITCH		
SPOT GRADE		
WALL MOUNTED		
LIGHT FIXTURE		
SECURITY CAMERA		
OVERHEAD WIRES		
CMP CABLE LINES		



Prepared For:
Applicant:
 BoPo, L.L.C.
 58 Alder Street
 Portland, Maine
 Justin Alford, Manager

Prepared By:
MITCHELL & ASSOCIATES
 Landscape Architects
 The Staples School
 70 Center Street
 Portland, Maine 04101
 Tel: (207) 774-4427

BAYSIDE BOWL

Portland, Maine

58 Alder Street

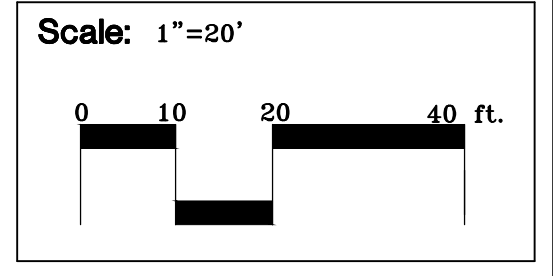
Date:
 DECEMBER 18, 2015

Issued For:
 AMENDED
 SITE PLAN SUBMISSION

Revisions:

Reproduction or reuse of this document without the expressed written consent of Mitchell & Associates is prohibited.

Title:
 GRADING AND DRAINAGE PLAN - SOMERSET EXTENSION



North:

Sheet No.:
3

