

BAYSIDE BOWL
FOUNDATION DESIGN
58 Alder St Portland, ME 04101



CONSULTANTS:
STRUCTURAL:
Structural Integrity
77 Oak Street
Portland, ME 04101
207-774-4614

REVISIONS:

DATE: 01/29/2016

PROJECT No.

DRAWN BY: WMc

CHECKED BY: ACJ

SCALE: AS NOTED

SHEET TITLE:

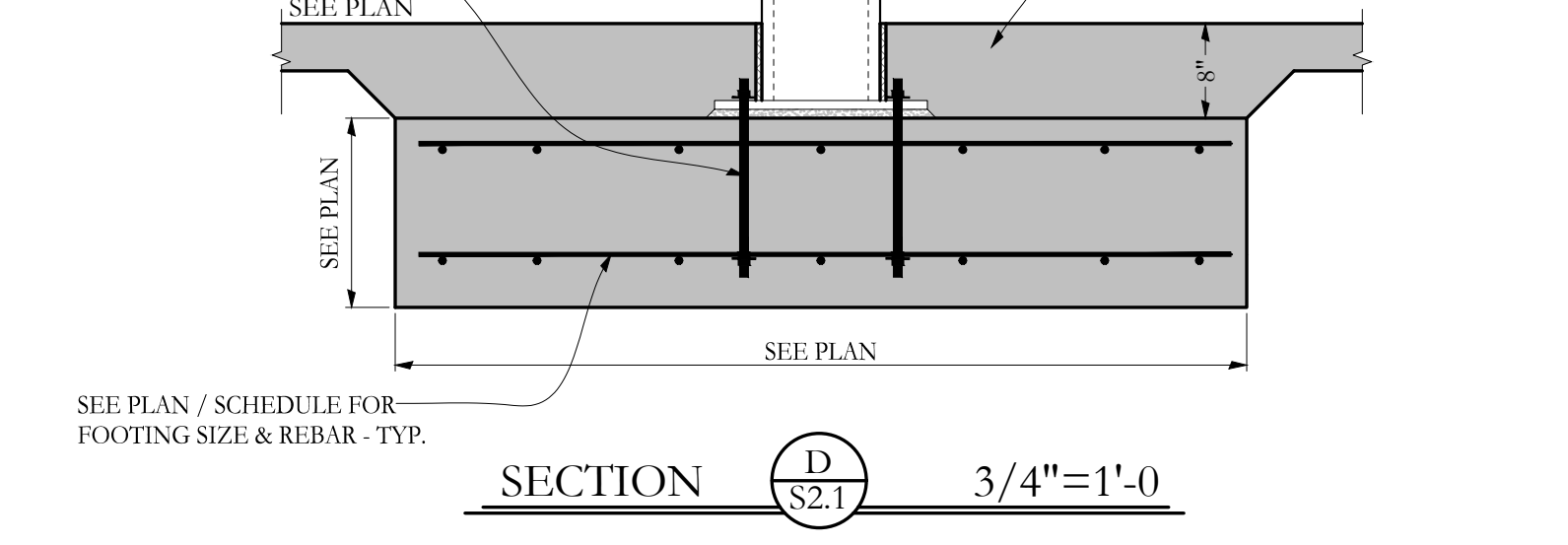
SECTIONS

S2.1

ALL INTERIOR ANCHOR BOLTS FOR PEMB SUPPORT SHALL BE 1'-6" TALL W/ 4" PROJECTION GALV. THREADED ROD DOUBLE NUTTED W/ WASHER TACK WELDED. SEE METAL BUILDING MANUFACTURER FOR ANCHOR DIAMETER REQUIREMENTS AND PLACEMENT. -TYP UNO

PRE-ENGINEERED METAL BUILDING - SEE STEEL BUILDING SYSTEMS DRAWING

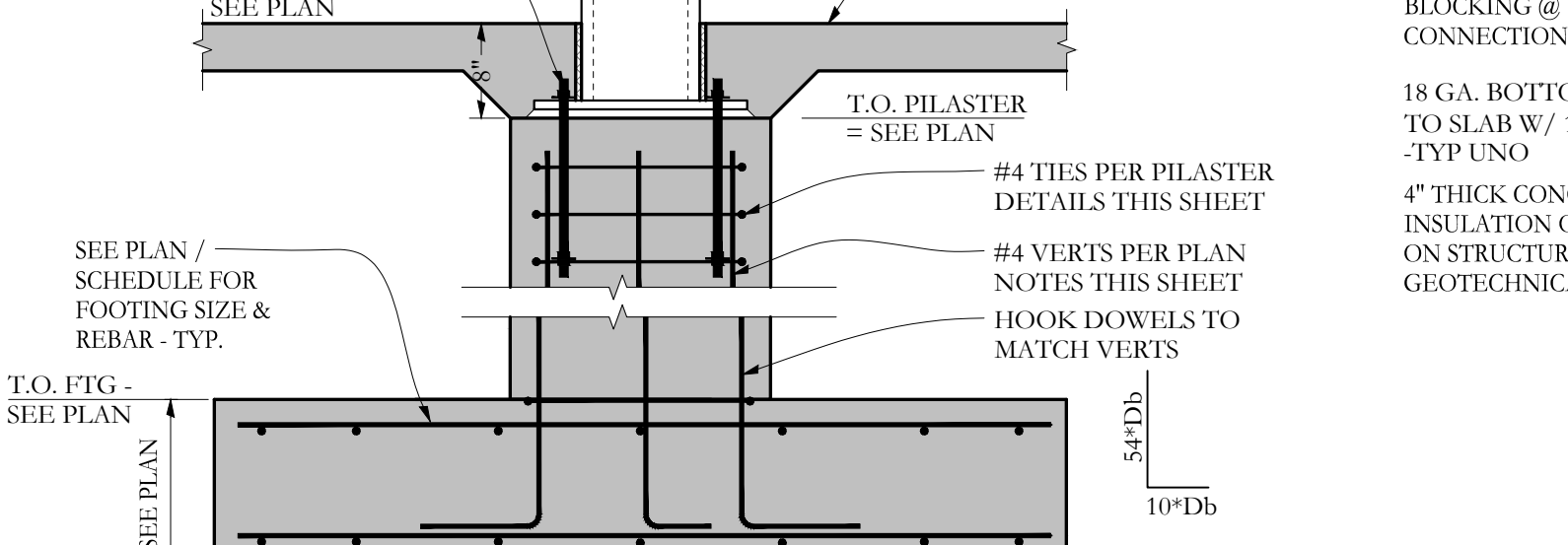
4" THICK CONC. SLAB ON RIGID INSULATION ON VAPOR BARRIER ON STRUCTURAL FILL - SEE GEOTECHNICAL REPORT - TYP.



ALL ANCHOR BOLTS FOR PEMB SUPPORT SHALL BE 1'-6" TALL W/ 4" PROJECTION GALV. THREADED ROD DOUBLE NUTTED W/ WASHER TACK WELDED. SEE METAL BUILDING MANUFACTURER FOR ANCHOR DIAMETER REQUIREMENTS AND PLACEMENT. -TYP UNO

PRE-ENGINEERED METAL BUILDING - SEE STEEL BUILDING SYSTEMS DRAWING

4" THICK CONC. SLAB ON RIGID INSULATION ON VAPOR BARRIER ON STRUCTURAL FILL - SEE GEOTECHNICAL REPORT - TYP.

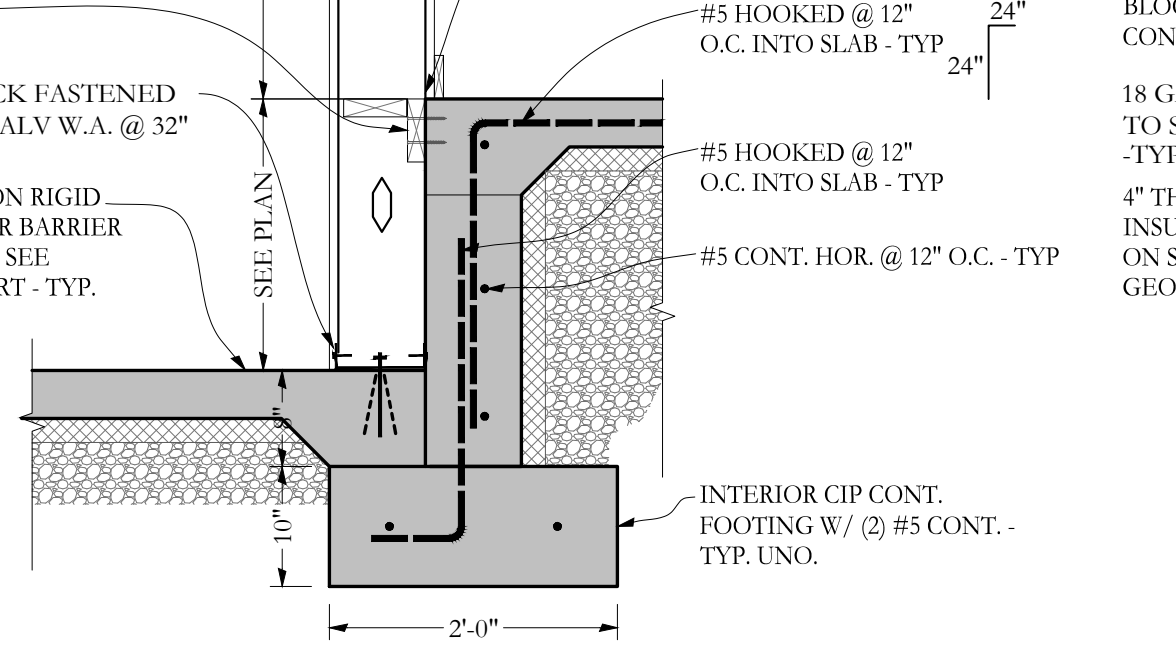


GALV. LIGHT GAUGE STEEL FRAMED HALF WALL @ STEP - SEE ARCH FOR HEIGHT - TYP.

FASTEN FLANGE TO CONC. W/ (3) 1/4" O X 2-1/2" TAPCON EACH.

18 GA. BOTTOM TRACK FASTENED TO SLAB W/ 1/2" Ø GALV W.A. @ 32" -TYP UNO

4" THICK CONC. SLAB ON RIGID INSULATION ON VAPOR BARRIER ON STRUCTURAL FILL - SEE GEOTECHNICAL REPORT - TYP.

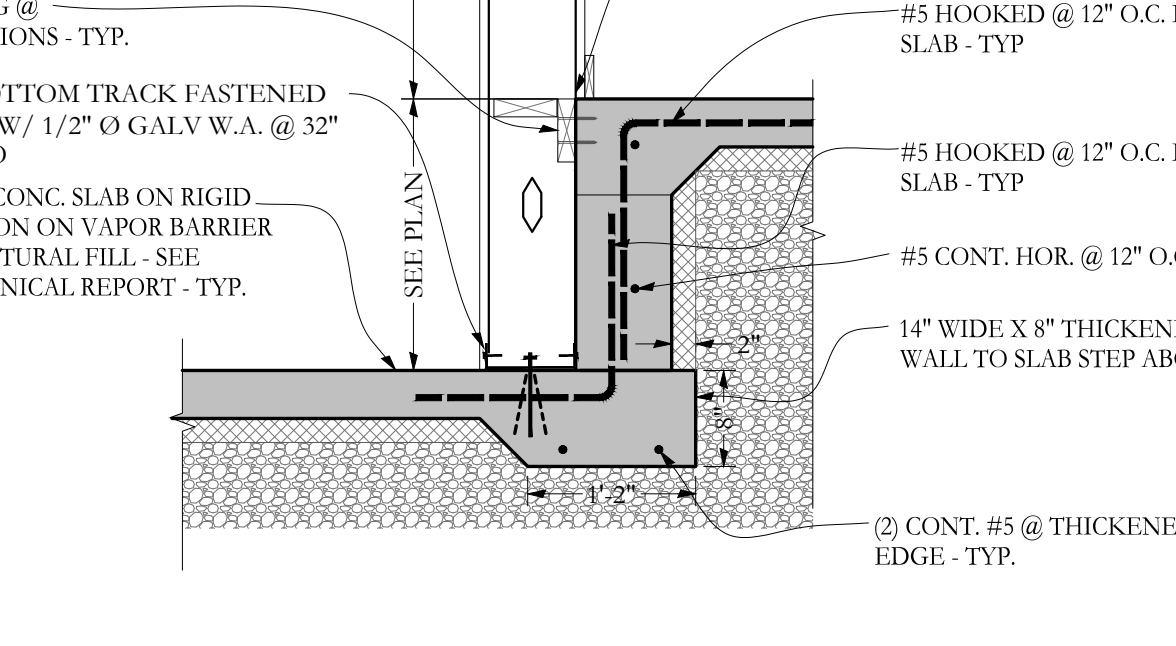


GALV. LIGHT GAUGE STEEL FRAMED HALF WALL @ STEP - SEE ARCH FOR HEIGHT - TYP.

FASTEN FLANGE TO CONC. W/ (3) 1/4" O X 2-1/2" TAPCON EACH.

18 GA. BOTTOM TRACK FASTENED TO SLAB W/ 1/2" Ø GALV W.A. @ 32" -TYP UNO

4" THICK CONC. SLAB ON RIGID INSULATION ON VAPOR BARRIER ON STRUCTURAL FILL - SEE GEOTECHNICAL REPORT - TYP.



PEMB WALL SYSTEM BY OTHERS

STEEL COLUMN ON PILASTER BEYOND

2" RIGID INSULATION

2" AIR GAP

BRICK VENEER

FLASHING / FINISHES PER ARCH

EXTERIOR GRADE CONDITION - SEE SITE PLANS - TYP.

SOLID GROUT BELOW FLASHING @ GRADE - TYP.

14" CIP WALL

FND DRAIN BY OTHER - TYP.

PILE & FOOTING BEYOND @ PEMB STEEL COLUMN

4" THICK CONC. SLAB ON RIGID INSULATION ON VAPOR BARRIER ON STRUCTURAL FILL - SEE GEOTECHNICAL REPORT - TYP.

REFERENCE ELEV. = 100'-0"

SEE JOB SPECIFIC ANCHOR BOLT PLAN BY MANUFACTURER FOR ANCHOR BOLT LOCATIONS, LENGTHS, PROJECTIONS, ETC.

#4 HOOK EMBEDDED IN SLAB @ 32" O.C. -TYP. UNO

#4 HOR @ 24" MAX EACH FACE -TYP.

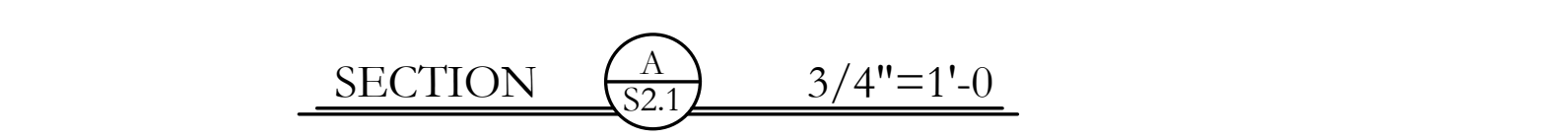
#4 VERT @ 16" EACH FACE -TYP.

(2) #4 CONT @ TOP AND BOT @ INSIDE MAT

#4 HOOK EMBEDDED IN FOOTING @ 32" O.C. EACH FACE (STAGGERED) -TYP. UNO

PILE & FOOTING BEYOND @ PEMB STEEL COLUMN

(3) #5 CONT.



STEEL COLUMN ON PILASTER BEYOND PEMB WALL SYSTEM

3/4"± GROUT - TYP.

PILE & FOOTING BEYOND @ PEMB STEEL COLUMN

#4 HOOK EMBEDDED IN SLAB @ 32" O.C. -TYP. UNO

4" THICK CONC. SLAB ON RIGID INSULATION ON VAPOR BARRIER ON STRUCTURAL FILL - SEE GEOTECHNICAL REPORT - TYP.

REFERENCE ELEV. = 100'-0"

ALL EXTERIOR ANCHOR BOLTS SHALL BE 2'-0" TALL W/ 4" PROJECTION GALV. THREADED ROD DOUBLE NUTTED W/ WASHER TACK WELDED. SEE METAL BUILDING MANUFACTURER FOR ANCHOR DIAMETER REQUIREMENTS AND PLACEMENT. -TYP UNO

CIP WALL BEYOND

PILASTER W/ FULL HEIGHT #4 VERTS W/ 10" HOOK EMBEDDED 6" INTO FOOTING - SEE PLAN / DETAILS FOR REINFORCEMENT INFORMATION

#4 THS AND "B" BARS @ 12" O.C. W/ (4) @ ANCHOR BOLTS EMBED -TYP

SEE PLAN / SCHEDULE FOR FOOTING SIZE & REBAR - TYP.

POST-TIE BRICK TIES @ 16" O.C. EACH DIRECTION - TYP.

2" RIGID INSULATION

2" AIR GAP

3-5/8" VENEER

FLASHING / FINISHES PER ARCH

EXTERIOR GRADE CONDITION - SEE SITE PLANS - TYP.

SOLID GROUT BELOW FLASHING @ GRADE - TYP.

CONTINUE TYPICAL WALL REINFORCING THROUGH PILASTER - TYP.

FND DRAIN BY OTHER - TYP.



PEMB WALL SYSTEM

STEEL COLUMN OVER PILASTER BEYOND

(1) #5 CONT.

4" THICK CONC. SLAB ON RIGID INSULATION ON VAPOR BARRIER ON STRUCTURAL FILL - SEE GEOTECHNICAL REPORT - TYP.

REFERENCE ELEV. = 102' 10-3/4"

T.O. EXTERIOR PILE @ HIGH SLAB = 102' 2-3/4" -TYP. UNO

CONTINUE TYPICAL REINFORCING UP 6" STEM - TYP.

(2) #4 CONT @ TOP, MIDDLE, AND BOTTOM @ INSIDE MAT OF RAISED 6" STEM AREAS - TYP.

SEE SECTION 'A' FOR TYPICAL REINFORCING

2" RIGID INSULATION

2" AIR GAP

3-5/8" VENEER

FLASHING / FINISHES PER ARCH

EXTERIOR GRADE CONDITION - SEE SITE PLANS - TYP.

14" CIP WALL

FND DRAIN BY OTHER - TYP.

SEE JOB SPECIFIC ANCHOR BOLT PLAN BY MANUFACTURER FOR ANCHOR BOLT LOCATIONS, LENGTHS, PROJECTIONS, ETC.



PEMB WALL SYSTEM

STEEL COLUMN OVER PILASTER BEYOND

(1) #5 CONT.

4" THICK CONC. SLAB ON RIGID INSULATION ON VAPOR BARRIER ON STRUCTURAL FILL - SEE GEOTECHNICAL REPORT - TYP.

REFERENCE ELEV. = 102' 10-3/4"

T.O. EXTERIOR PILE @ HIGH SLAB = 102' 2-3/4" -TYP. UNO

CONTINUE TYPICAL REINFORCING UP 6" STEM - TYP.

(2) #4 CONT @ TOP, MIDDLE, AND BOTTOM @ INSIDE MAT OF RAISED 6" STEM AREAS - TYP.

SEE SECTION 'A' FOR TYPICAL REINFORCING

2" RIGID INSULATION

2" AIR GAP

3-5/8" VENEER

FLASHING / FINISHES PER ARCH

EXTERIOR GRADE CONDITION - SEE SITE PLANS - TYP.

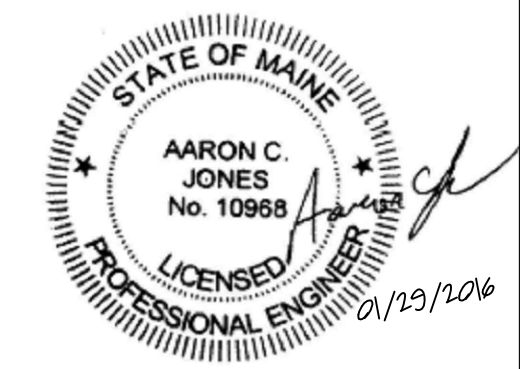
14" CIP WALL

FND DRAIN BY OTHER - TYP.

SEE JOB SPECIFIC ANCHOR BOLT PLAN BY MANUFACTURER FOR ANCHOR BOLT LOCATIONS, LENGTHS, PROJECTIONS, ETC.



Structural Integrity
Consulting Engineers, Inc.
77 Oak Street
Portland, ME, 04101
p. 207-774-4614
f. 866-793-7835
www.structuralintg.com
BUILD WITH CONFIDENCE
© 2012 Structural Integrity Consulting Engineers, Inc.



SI # 15-0243