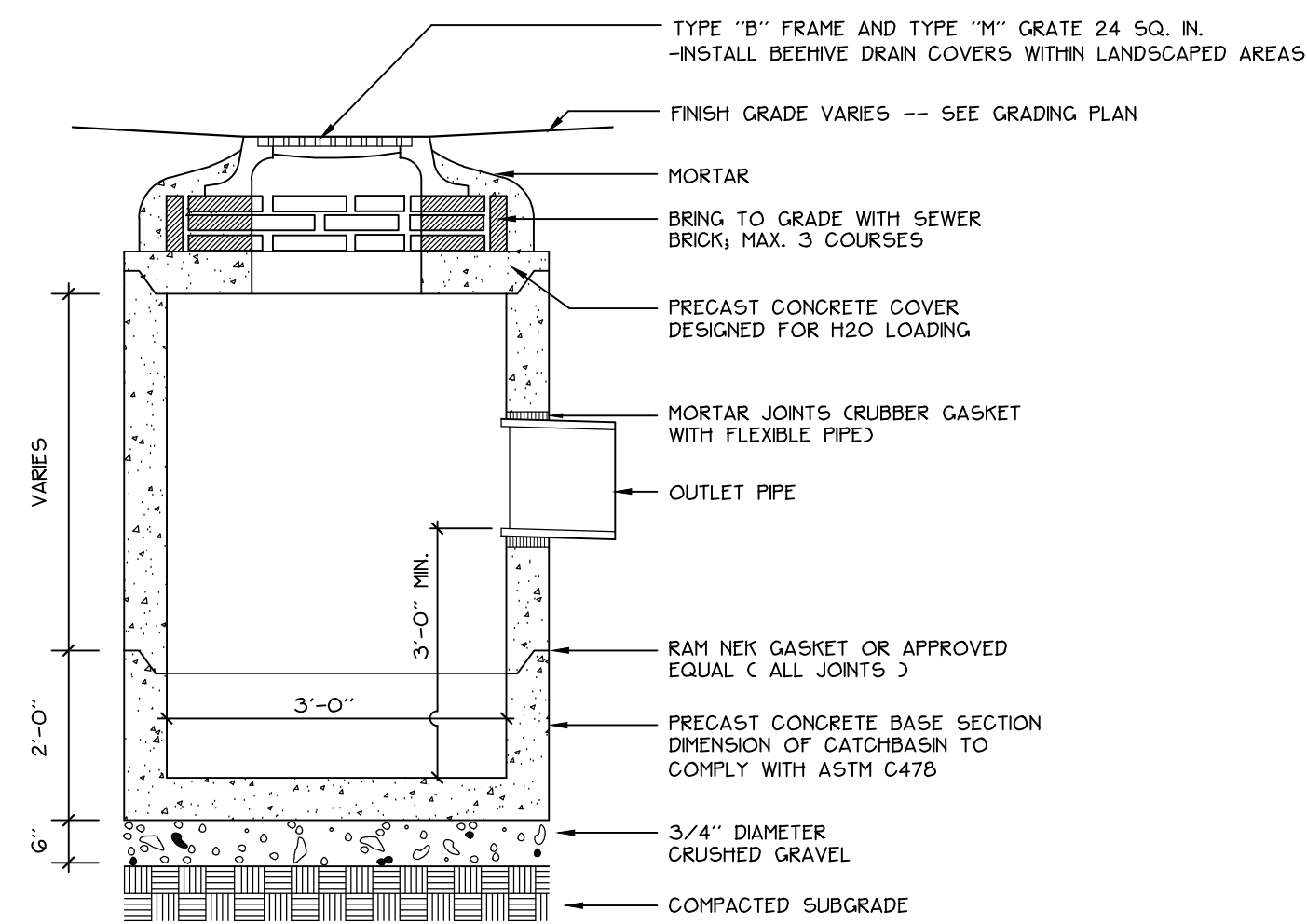
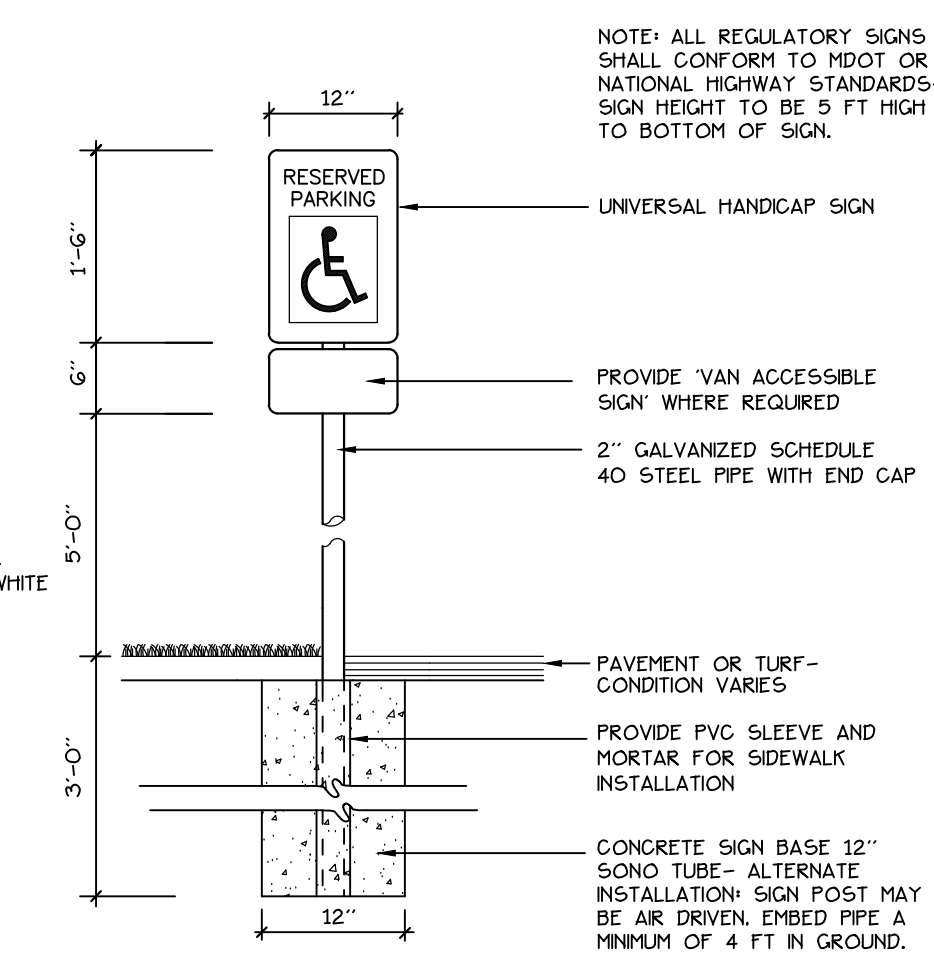
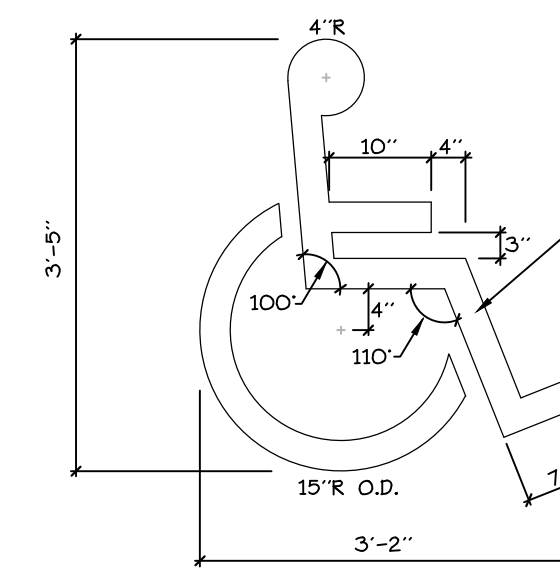


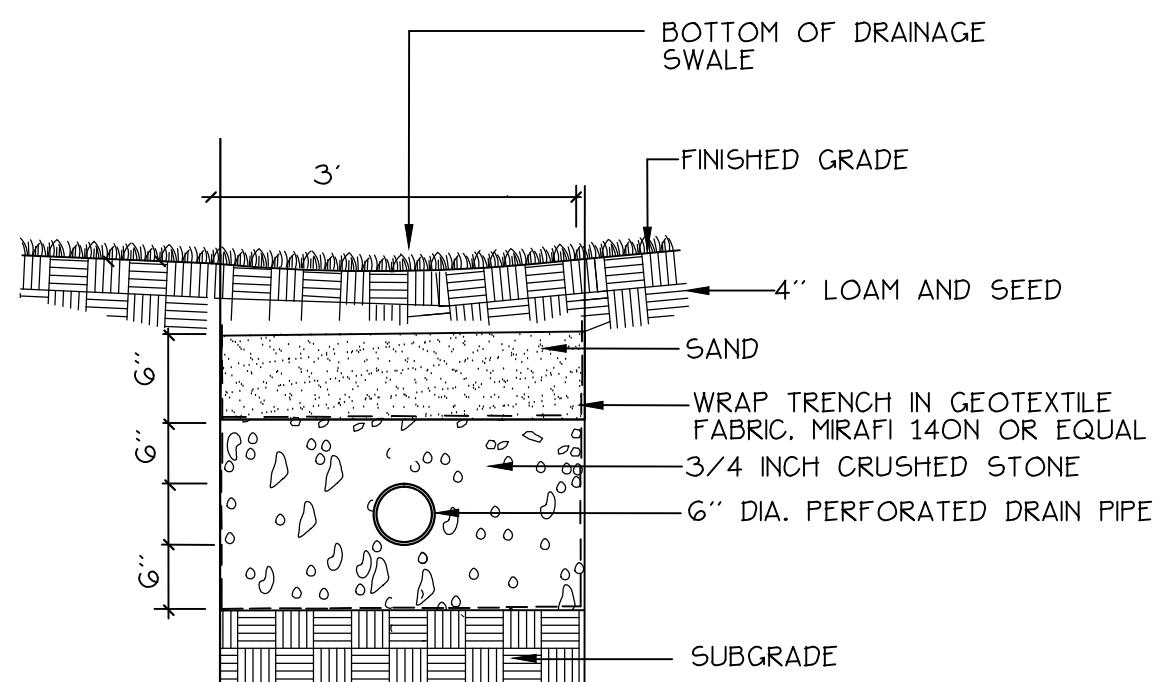
1
6 PRECAST CONCRETE FIELD INLET
NOT TO SCALE



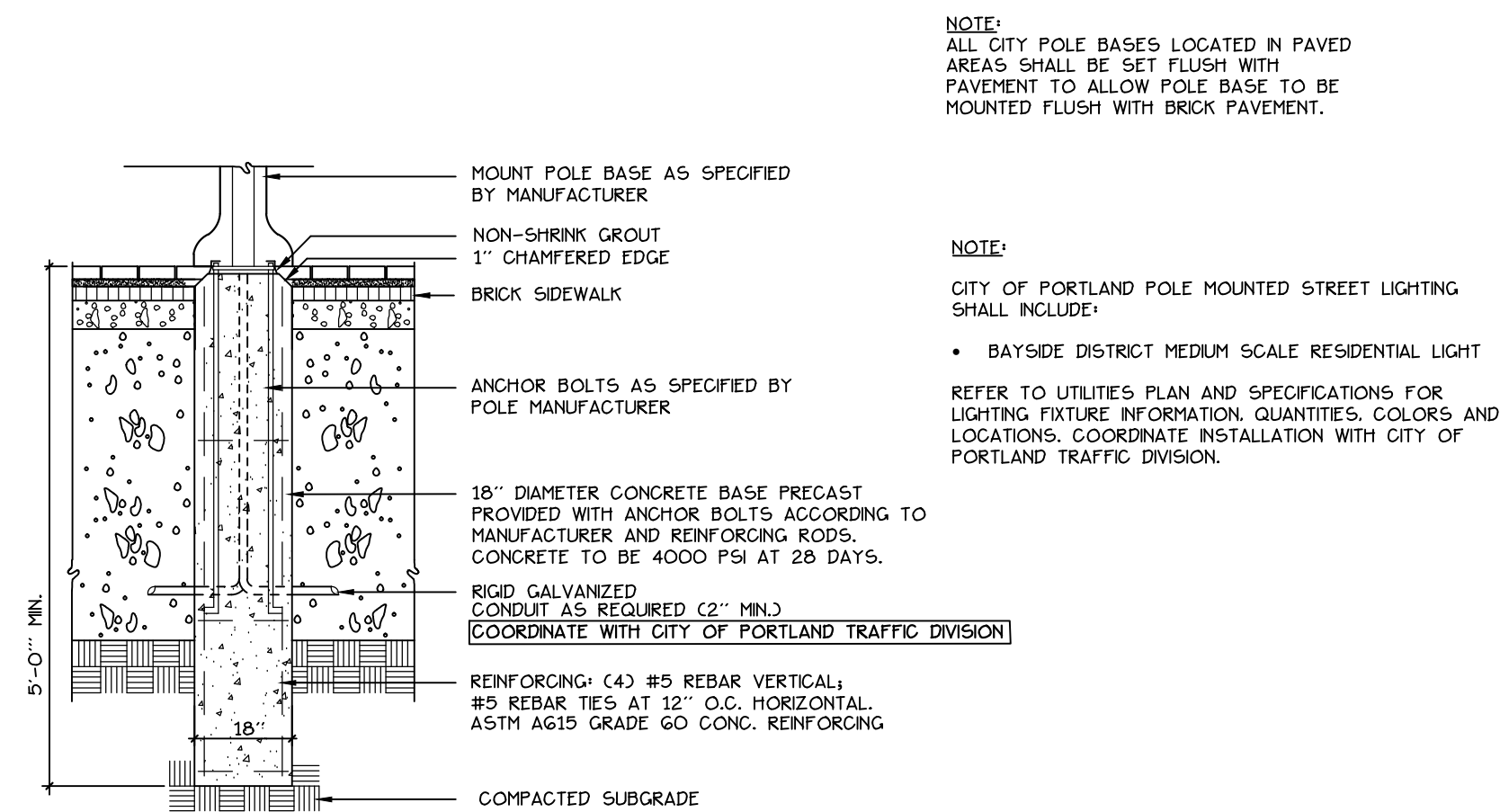
5
6 PRECAST CONCRETE CATCHBASIN
NOT TO SCALE



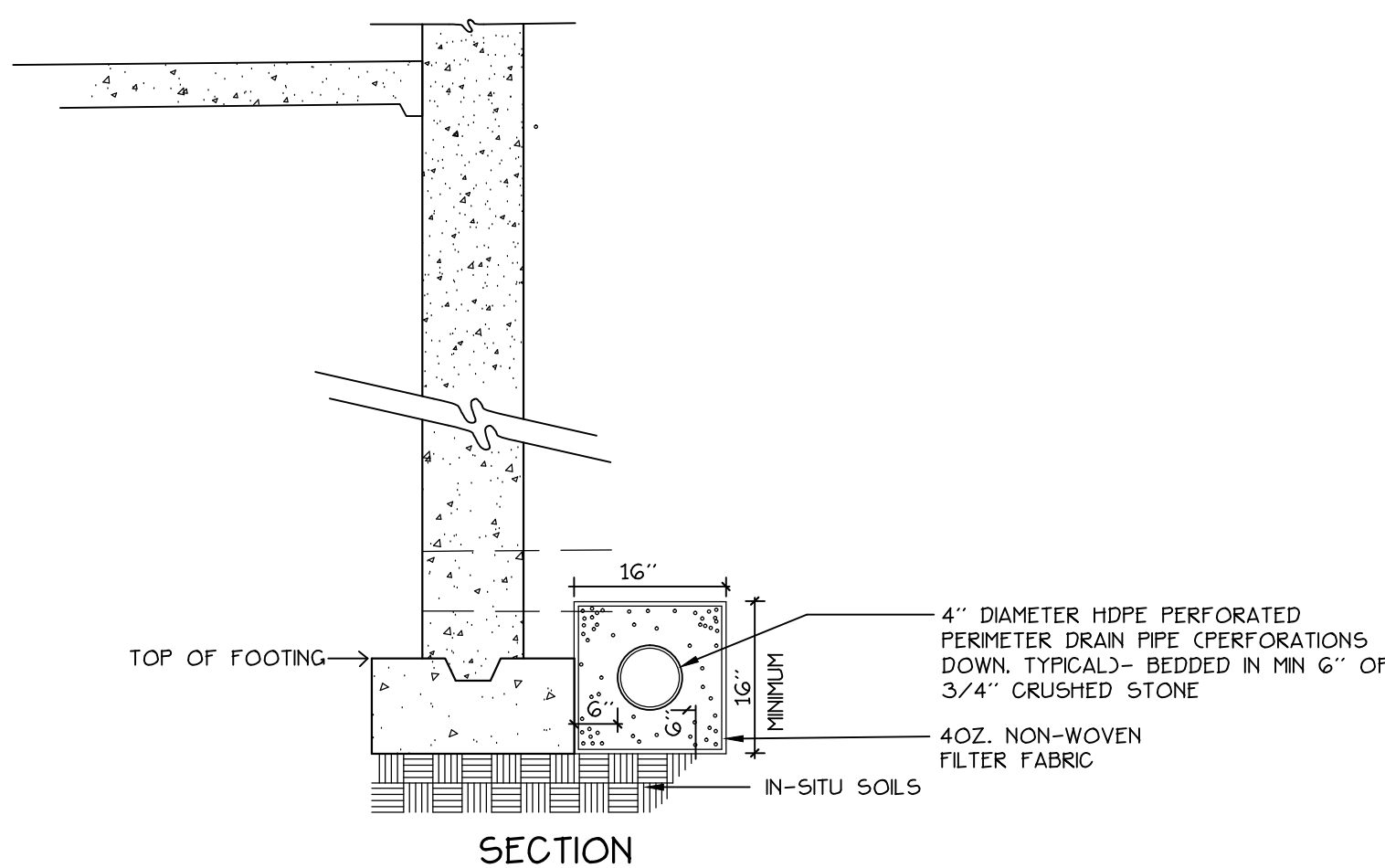
8
6 ACCESSIBLE SPACE MARKINGS + SIGNAGE
NOT TO SCALE



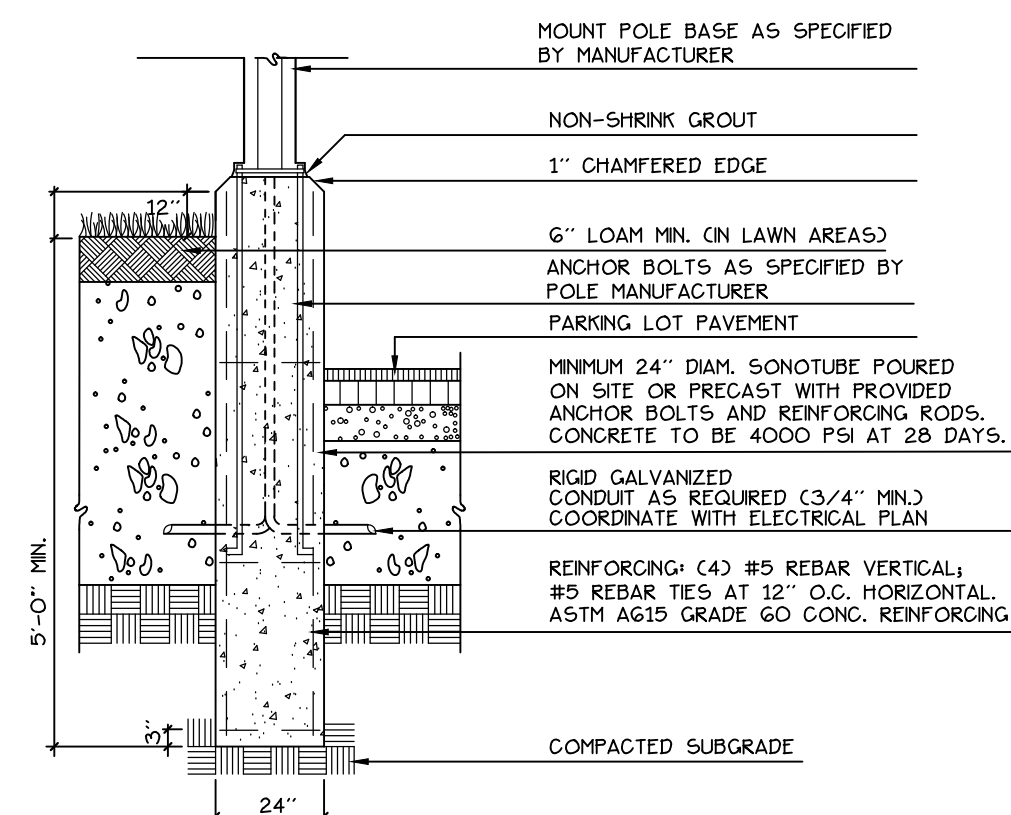
2
6 STONE INFILTRATION TRENCH
NOT TO SCALE



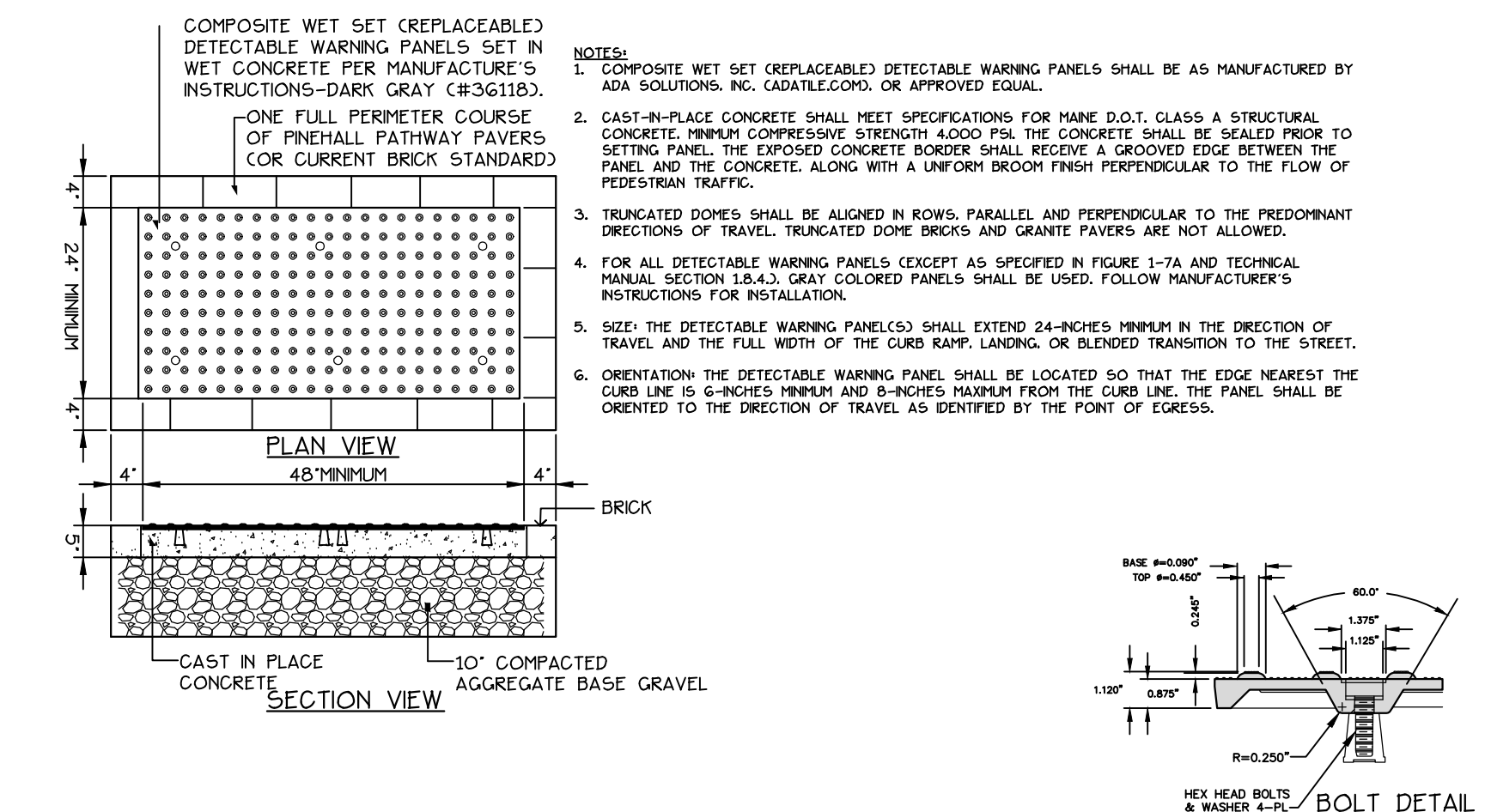
6
6 BAYSIDE FIXTURE LIGHT POLE BASE
NOT TO SCALE



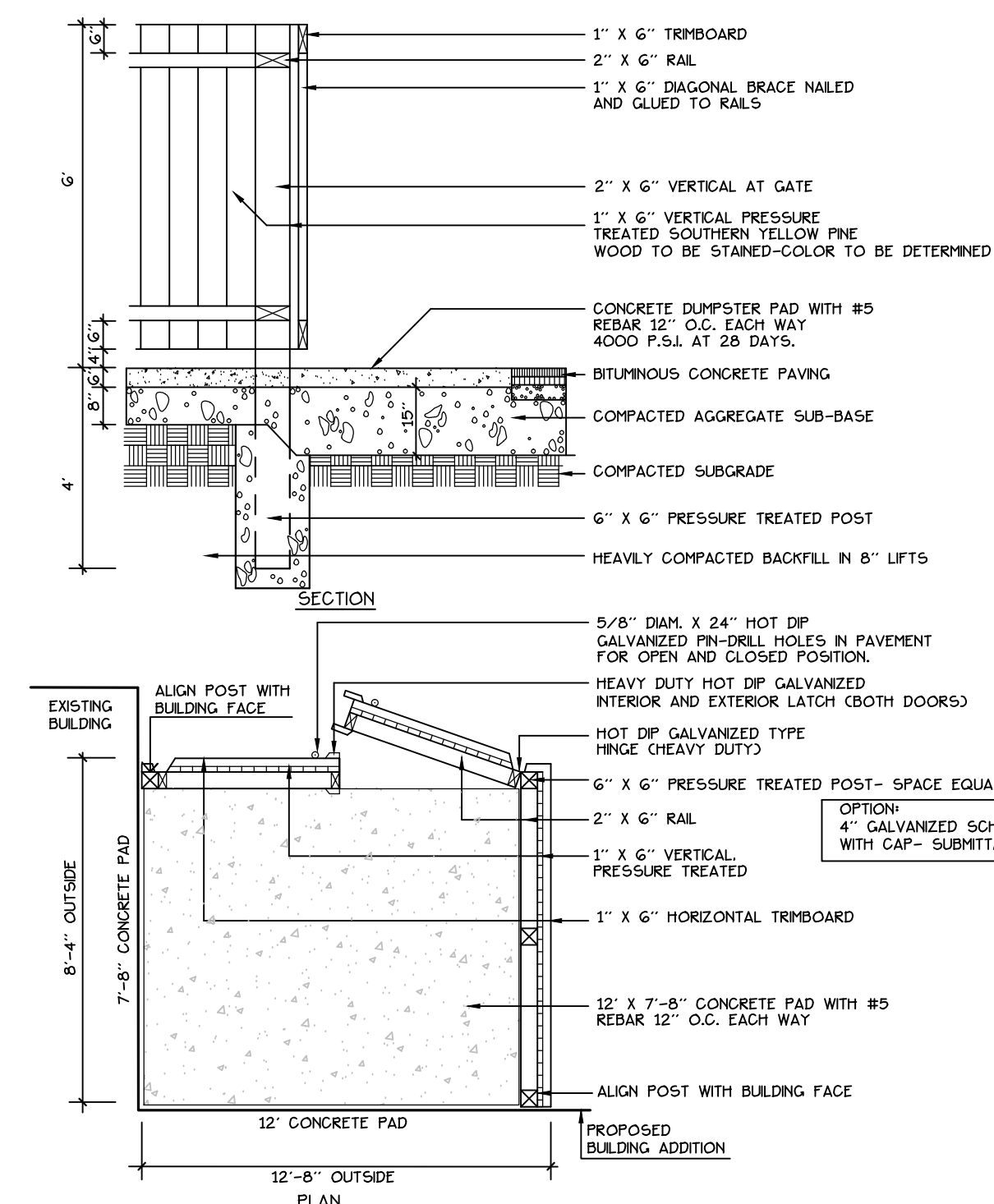
3
6 PERIMETER FOUNDATION UNDERDRAIN
NOT TO SCALE



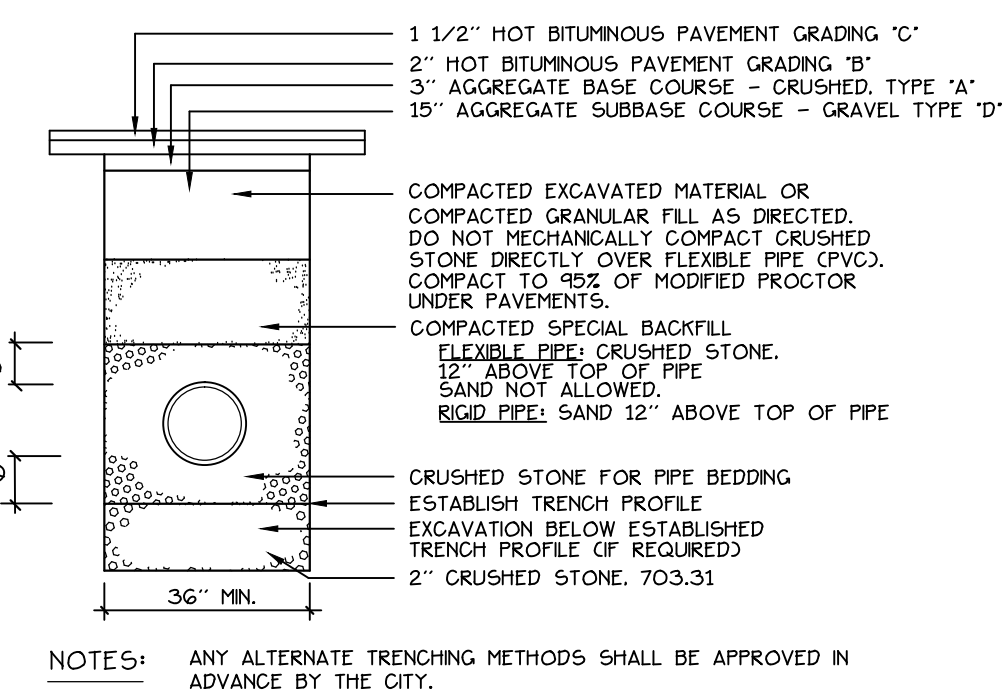
7
6 LIGHT POLE BASE
NOT TO SCALE



4
6 SIDEWALK RAMP DETECTABLE WARNING TILE
NOT TO SCALE



10
6 DUMPSTER ENCLOSURE
NOT TO SCALE



4
6 PIPE TRENCH DETAIL
NOT TO SCALE

Prepared For:
Applicant:
BoPo,L.L.C.
58 Alder Street
Portland, Maine
Justin Alfond, Manager

Prepared By:
MITCHELL & ASSOCIATES
Landscape Architects
The Staples School
70 Center Street
Portland, Maine 04101
Tel: (207) 774-4427

BAYSIDE BOWL

Portland, Maine

58 Alder Street

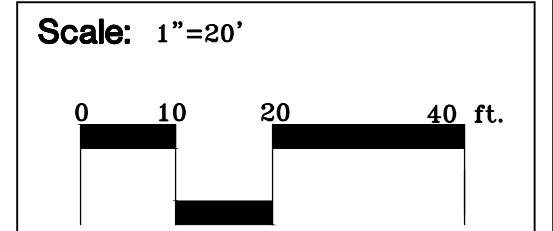
Date:
MARCH 23, 2015

Issued For:
SITE PLAN SUBMISSION

Revisions:
4-23-15:
per staff comments

Reproduction or reuse of this document without the expressed written consent of Mitchell & Associates is prohibited.

Title:
SITE DETAILS



North:

Sheet No:
6

