

**GENERAL PLANTING NOTES**

- CALL DIG-SAFE (1-888-344-7233) PRIOR TO BEGINNING WORK. THE LANDSCAPE CONTRACTOR IS ADVISED OF THE PRESENCE OF UNDERGROUND UTILITIES AND SHALL VERIFY THE EXISTENCE AND LOCATION OF SAME BEFORE COMMENCING AND DIGGING OPERATIONS. THE LANDSCAPE CONTRACTOR SHALL REPLACE OR REPAIR UTILITIES PAVING, WALKS, CURBING, ETC. DAMAGED IN PERFORMANCE OF THIS JOB AT NO ADDITIONAL COST TO OWNER.
- CONTRACTOR SHALL THOROUGHLY FAMILIARIZE HIMSELF WITH ALL SITE CONDITIONS PRIOR TO CONSTRUCTION BIDDING.
- DO NOT SCALE FROM DRAWINGS. ANY OMISSIONS IN DIMENSIONING SHALL BE REPORTED IMMEDIATELY TO THE LANDSCAPE ARCHITECT. ANY DISCREPANCIES BETWEEN DRAWINGS, DETAILS, NOTES AND SPECS SHALL BE IMMEDIATELY REPORTED TO THE LANDSCAPE ARCHITECT FOR FURTHER DIRECTION AND RESOLUTION BEFORE ANY ADDITIONAL WORK PROCEEDS.
- PROVIDE SMOOTH TRANSITION WHERE NEW WORK MEETS EXISTING CONDITIONS.
- CONTRACTOR SHALL FURNISH AND PLACE 12 INCHES OF LOAM IN ALL SHRUB BEDS, 30 INCHES IN ALL TREE PITS, AND 6 INCHES UNDER ALL TURF AREAS. THE LANDSCAPE CONTRACTOR SHALL COORDINATE SUBGRADE PREPARATION WITH THE GENERAL CONTRACTOR PRIOR TO PLACING LOAM.
- ALL PLANT MATERIAL INSTALLED SHALL MEET THE SPECIFICATIONS OF "AMERICAN STANDARDS FOR NURSERY STOCK BY THE AMERICAN ASSOCIATION OF NURSERYMEN" LATEST EDITION.
- ALL PLANT MATERIAL SHALL BE FREE FROM INSECTS AND DISEASE.
- ALL PLANTING SHALL BE DONE IN ACCORDANCE WITH ACCEPTABLE HORTICULTURAL PRACTICES. THIS IS TO INCLUDE PROPER PLANTING MIX, PLANT BED AND TREE PIT PREPARATION, PRUNING, STAKING OR CUYING, WRAPPING, SPRAYING, FERTILIZATION, PLANTING AND ADEQUATE MAINTENANCE UNTIL ACCEPTANCE FROM THE OWNER.
- ALL GRASS, OTHER VEGETATION AND DEBRIS SHALL BE REMOVED FROM ALL PLANTING AREAS PRIOR TO PLANTING.
- EXISTING TREES TO BE PRESERVED SHALL BE PROTECTED DURING CONSTRUCTION AND SHALL BE THE RESPONSIBILITY OF THE GENERAL CONTRACTOR.
- ALL SHRUB BEDS AND TREE PITS SHALL BE MULCHED WITH 3" CLEAN SHREDDED BLACK MULCH (DO NOT EXCEED 3" DEPTH).
- ANY DEVIATION FROM THE LANDSCAPE PLAN, INCLUDING PLANT LOCATION, SELECTION, SIZE, QUANTITY, OR CONDITION SHALL BE REVIEWED AND APPROVED BY THE OWNER AND LANDSCAPE ARCHITECT (AND MUNICIPAL AUTHORITY, IF APPLICABLE) PRIOR TO INSTALLATION ON SITE.
- WHERE INDICATED ON PLAN, PLANTING SOIL MIXTURE FOR GROUND COVER AND PERENNIAL BED AREAS SHALL CONSIST OF FOUR PARTS TOPSOIL, TWO PARTS SPHAGNUM PEAT MOSS, AND ONE PART HORTICULTURAL PERLITE BY VOLUME. PEAT MOSS MAY BE SUBSTITUTED WITH WELL-ROTTED OR DEHYDRATED MANURE OR COMPOST. ROTOTILL BEDS TO A DEPTH OF 8 INCHES.
- DAMAGE TO EXISTING SITE IMPROVEMENTS DURING INSTALLATION OF LANDSCAPE MATERIAL SHALL BE THE RESPONSIBILITY OF THE LANDSCAPE CONTRACTOR.
- ALL WORK WITHIN THE ROAD RIGHT-OF-WAY AND ALL UTILITIES CONNECTING TO INFRASTRUCTURE WITHIN THE ROAD SHALL MEET CITY OF PORTLAND TECHNICAL MANUAL STANDARDS.

**PLANT LIST**

KEY	QTY	BOTANICAL NAME	COMMON NAME	SIZE
<b>TREES</b>				
A. RUB	5	ACER RUBRUM 'KARPICK'	KARPICK MAPLE	2" CAL
A. PSE	4	ACER PSEUDOSIEBOLDIANUM	KOREAN MAPLE	#7
Z. SER	1	ZELKOVA SERRATA 'GREEN VASE'	GREEN VASE ZELKOVA	2" CAL
Q. RUB	6	QUERCUS CRIMSCHMIDT	CRIMSON SPIRE OAK	2" CAL
T. CUS	1	TAXUS CUSPIDATA 'CAPITATA'	UPRIGHT JAPANESE YEWE	4'-5" HT.
<b>SHRUBS</b>				
C. ALN	5	CLETHRA ALNIFOLIA 'RUBY SPICE'	RUBY SPICE SUMMERSWEET	#3
C. SAF	7	CORNUS SERICEA 'ARCTIC FIRE'	RED TWIG DOGWOOD	#3
M. GAL	15	MYRICA GALE	SWEET GALE	#3

**\*NOTES\***

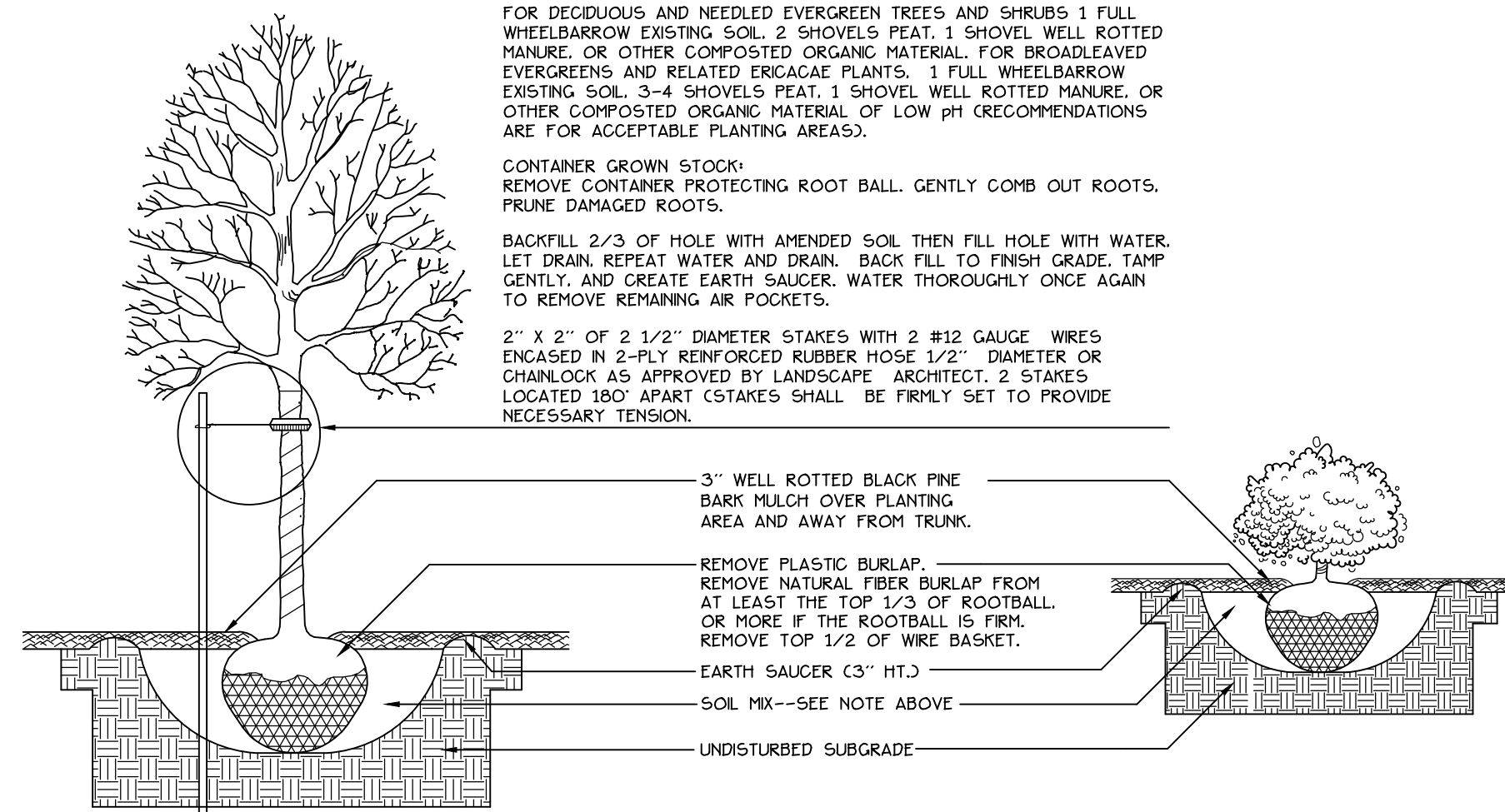
DIG HOLE AT LEAST 2 TIMES THE WIDTH OF ROOT BALL AND AS DEEP AS THE ROOT BALL (NO DEEPER). SET ROOT BALL CENTERED, WITH TOP AT GROUND LEVEL OR SLIGHTLY HIGHER. CORRECT HOLE DEPTH AS NEEDED.

FOR DECIDUOUS AND NEEDED EVERGREEN TREES AND SHRUBS 1 FULL WHEELBARROW EXISTING SOL. 2 SHOVELS PEAT. 1 SHOVEL WELL ROTTED MANURE OR OTHER COMPOSTED ORGANIC MATERIAL. FOR BROADLEAVED EVERGREENS AND RELATED ERICACEAE PLANTS. 1 FULL WHEELBARROW EXISTING SOL. 3-4 SHOVELS PEAT. 1 SHOVEL WELL ROTTED MANURE. OR OTHER COMPOSTED ORGANIC MATERIAL OF LOW pH (RECOMMENDATIONS ARE FOR ACCEPTABLE PLANTING AREAS).

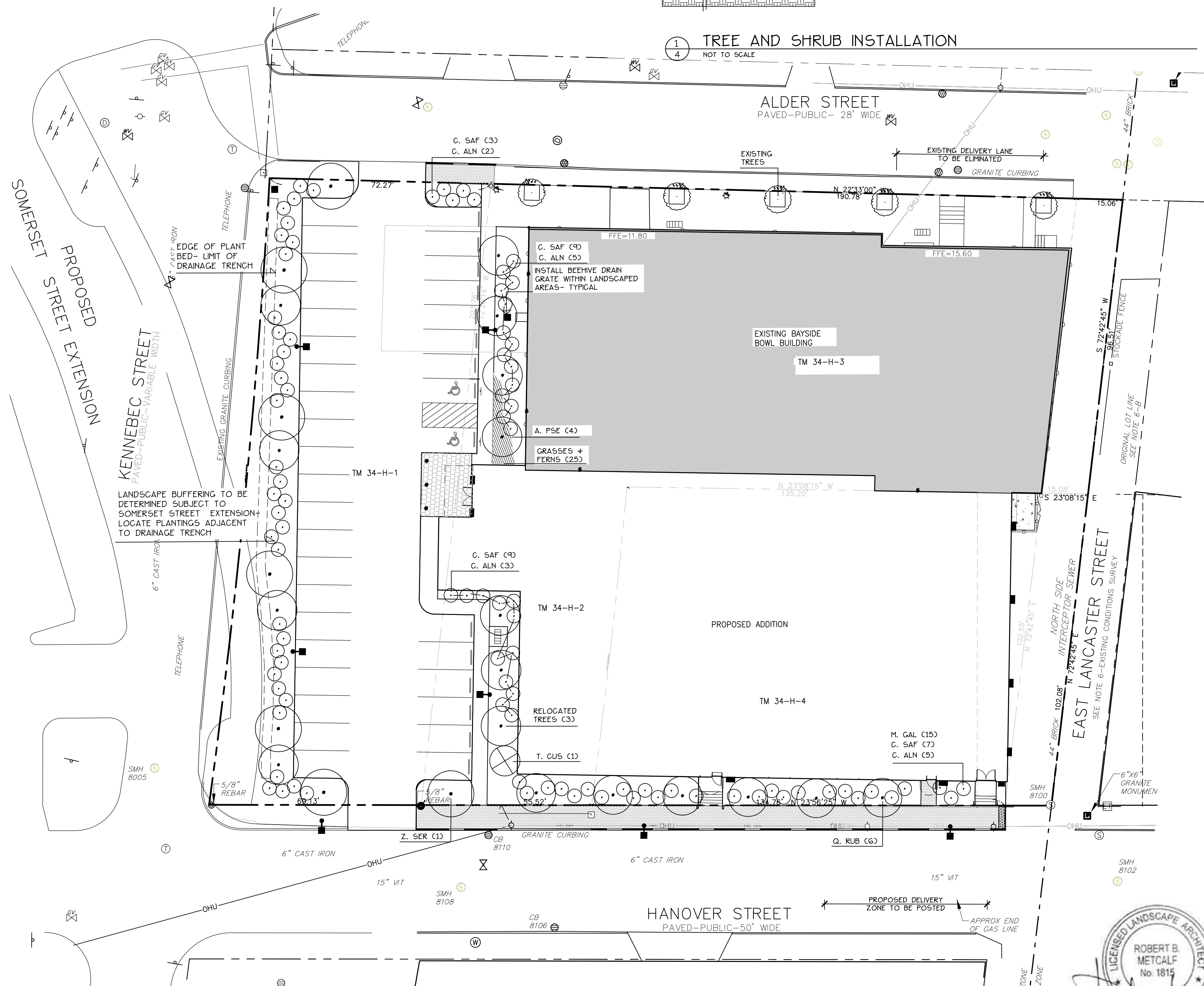
CONTAINER GROWN STOCK: REMOVE CONTAINER PROTECTING ROOT BALL. GENTLY COMB OUT ROOTS. PRUNE DAMAGED ROOTS.

BACKFILL 2/3 OF HOLE WITH AMENDED SOL THEN FILL HOLE WITH WATER. LET DRAIN. REPEAT WATER AND DRAIN. BACK FILL TO FINISH GRADE. TAMP GENTLY. AND CREATE EARTH SAUCER. WATER THOROUGHLY ONCE AGAIN TO REMOVE REMAINING AIR POCKETS.

2" X 2" OF 2 1/2" DIAMETER STAKES WITH 2 #12 GAUGE WRES ENGAGED IN 2-PL REINFORCED RUBBER HOSE 1/2" DIAMETER OR CHAIN LOCK AS APPROVED BY LANDSCAPE ARCHITECT. 2 STAKES LOCATED 180' APART (STAKES SHALL BE FIRMLY SET TO PROVIDE NECESSARY TENSION).



**TREE AND SHRUB INSTALLATION**



**LEGEND**

	EXISTING	PROPOSED
PROPERTY LINE	[Symbol]	[Symbol]
GRANITE MONUMENT	[Symbol]	[Symbol]
IRON PIN	[Symbol]	[Symbol]
CATCHBASIN	[Symbol]	[Symbol]
MANHOLE	[Symbol]	[Symbol]
HYDRANT	[Symbol]	[Symbol]
UTILITY POLE	[Symbol]	[Symbol]
WATER VALVE	[Symbol]	[Symbol]
CURB	[Symbol]	[Symbol]
FENCE	[Symbol]	[Symbol]
SIGN	[Symbol]	[Symbol]
DECIDUOUS TREE	[Symbol]	[Symbol]
EVERGREEN TREE	[Symbol]	[Symbol]
PIPE BOLLARD	[Symbol]	[Symbol]
BKE HITCH	[Symbol]	[Symbol]
ZONE LINE	[Symbol]	[Symbol]
WALL MOUNTED	[Symbol]	[Symbol]
LIGHT FIXTURE	[Symbol]	[Symbol]
SECURITY CAMERA	[Symbol]	[Symbol]
OVERHEAD WRES	[Symbol]	[Symbol]
CMP CABLE LINES	[Symbol]	[Symbol]

**Prepared For:**

**Applicant:**  
BoPo,L.L.C.  
58 Alder Street  
Portland, Maine  
Justin Alfond, Manager

**Prepared By:**

**MITCHELL & ASSOCIATES**  
Landscape Architects  
The Staples School  
70 Center Street  
Portland, Maine 04101  
Tel: (207) 774-4427

**BAYSIDE BOWL**

Portland, Maine

58 Alder Street

**Date:**

MARCH 23, 2015

**Issued For:**

SITE PLAN SUBMISSION

**Revisions:**

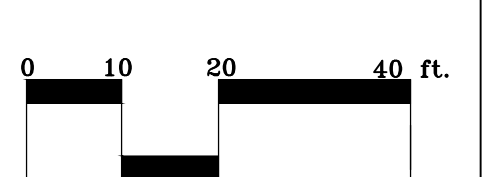
4-23-15:  
per staff comments

Reproduction or reuse of this document without the expressed written consent of Mitchell & Associates is prohibited.

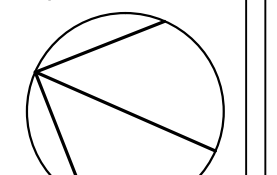
**Title:**

PLANTING PLAN

**Scale:** 1"=20'



**North:**



**Sheet No.:**

4

