

BAYSIDE BOWL
FOUNDATION DESIGN
58 Alder St Portland, ME 04101



RYAN SENATORE ARCHITECTURE
505 CONGRESS STREET
PORTLAND, MAINE 04101
207-650-6414
senatorearchitecture.com

CONSULTANTS:
STRUCTURAL:
Structural Integrity
77 Oak Street
Portland, ME 04101
207-774-4614

REVISIONS:

DATE: 06-10-15

PROJECT No.

DRAWN BY: WMc

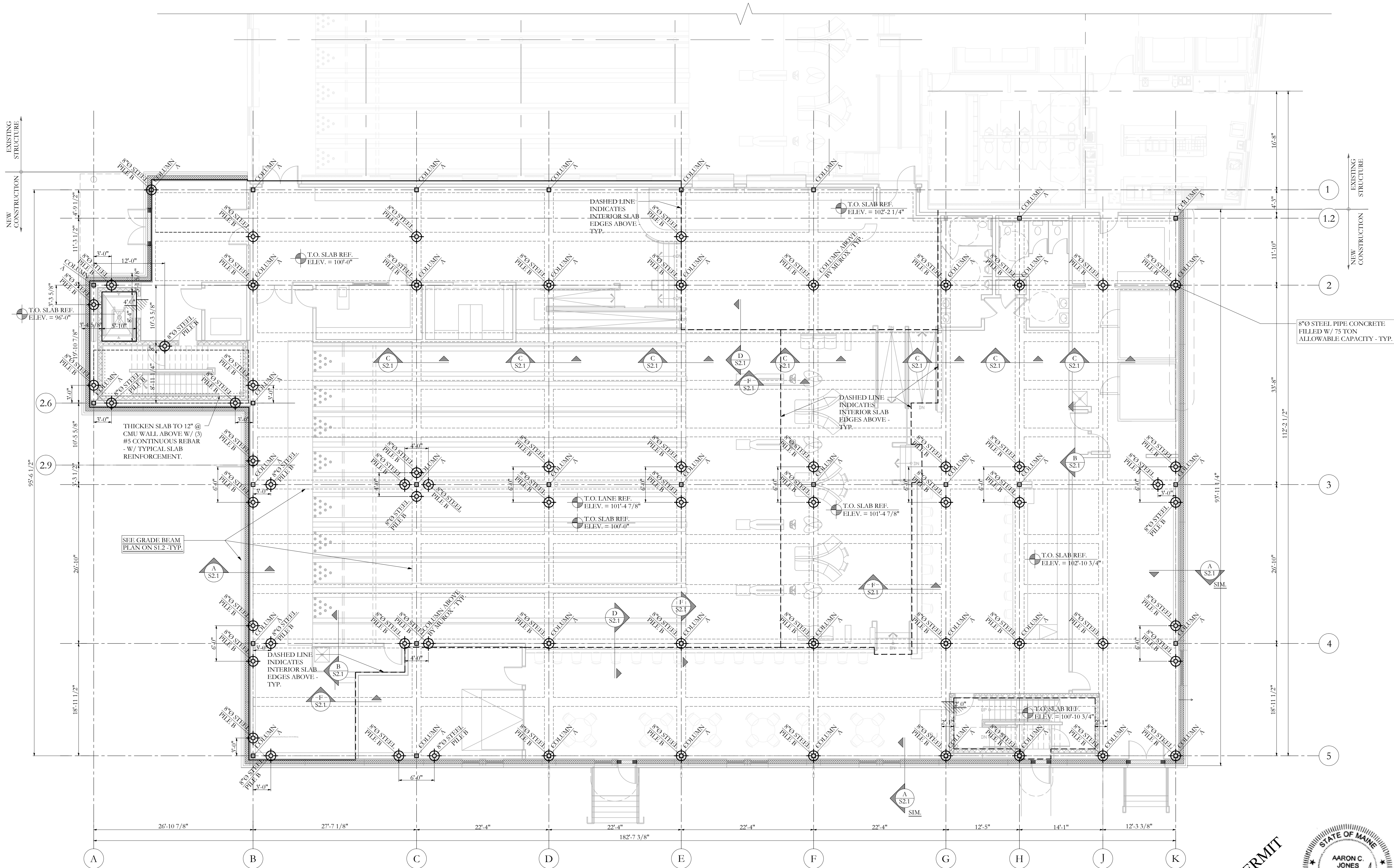
CHECKED BY: ACJ

SCALE: AS NOTED

SHEET TITLE:

STEEL PILE PLAN

S1.1



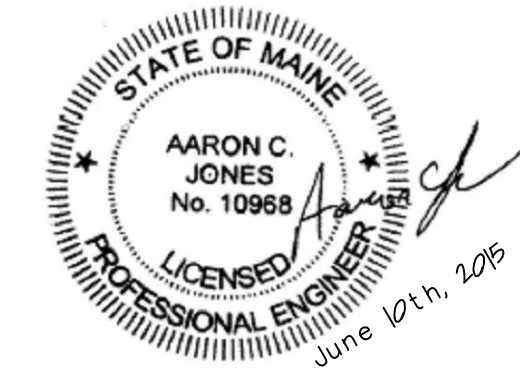
STEEL PILE PLAN
SCALE 1/8"=1'-0"

NOTE: TOP OF PILE ELEVATION VARIES - SEE GRADE BEAM PLAN FOR VARYING ELEVATIONS - TYP.

- 1. ALL PERIMETER GRADE BEAMS ARE 2'-0" WIDE W/ A MINIMUM DEPTH OF 2'-0" BELOW GRADE.
- 2. INTERIOR GRADE BEAMS ARE 1'-6" X 1'-6" TYP. - UNO.
- 3. STEP IN TOP OF FOUNDATION WALL IS INDICATED THUS: , AND SHOWS LOWER SIDE OF WALL.
- 4. STEP IN TOP OF GRADE BEAM IS INDICATED THUS: , AND SHOWS LOWER GRADE BEAM.
- 5. ALL PILES TO BE 8"Ø STEEL PIPE CONCRETE FILLED W/ 75 TON ALLOWABLE CAPACITY - TYP.
- 6. REFERENCE AND COORDINATE ALL DIMENSIONS W/ ARCHITECTURAL AND FRAMING PLANS - TYP.

= 10" WIDE CIP WALL

FOR PERMIT



Structural Integrity
Consulting Engineers, Inc.
77 Oak Street
Portland, ME, 04101
p. 207-774-4614
f. 866-793-7835
www.structuralinteg.com
SI # 15-0058

BUILD WITH CONFIDENCE
© 2012 Structural Integrity Consulting Engineers, Inc.