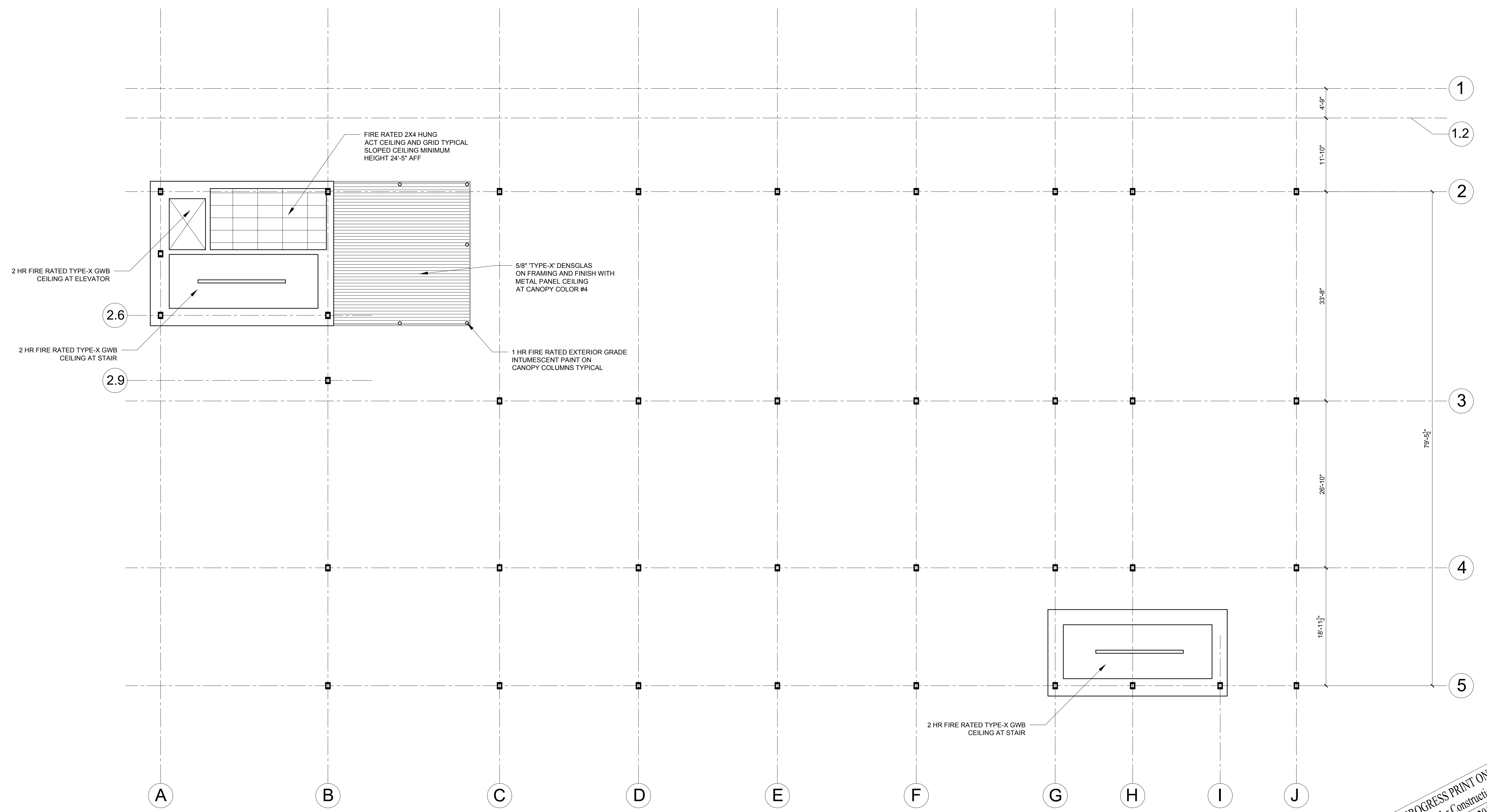


REFLECTED CEILING PLAN NOTES

- 1.) SEE ELECTRICAL, MECHANICAL AND SPRINKLER DRAWINGS FOR LOCATIONS OF LIGHTING, EMERGENCY EXIT SIGNS EMERGENCY LIGHTING, MECHANICAL ELEMENTS (DUCTS, VENTS, ETC), SPRINKLER HEADS.
- 2.) G.C. TO ADJUST CEILING GRID AS REQUIRED TO ACCOMMODATE LIGHTING AND MECHANICAL ELEMENTS
- 3.) G.C. TO COORDINATE CEILING LAYOUT WITH TENANT FIT-UP WORK



© 2015 RYAN SENATORE ARCHITECTURE

ADDITION TO BAYSIDE BOWL
ALDER STREET
PORTLAND, MAINE



RYAN SENATORE ARCHITECTURE
 565 CONGRESS STREET
 PORTLAND, MAINE 04101
 207-650-6414
 senatorearchitecture.com

CONSULTANTS:
STRUCTURAL:
 Structural Integrity
 77 Oak Street
 Portland, ME 04101
 207-774-4814

REVISIONS:

DATE: JUNE 09, 2015
 PROJECT No. 1452
 DRAWN BY: JPF / RRT / RJS
 CHECKED BY: RJS
 SCALE: AS NOTED

SHEET TITLE:
ROOF LEVEL REFLECTED CEILING PLAN

PROGRESS PRINT ONLY
Not for Construction
 JUNE 09, 2015

A1-8

1 ROOF LEVEL REFLECTED CEILING PLAN
 1/8" = 1'-0"