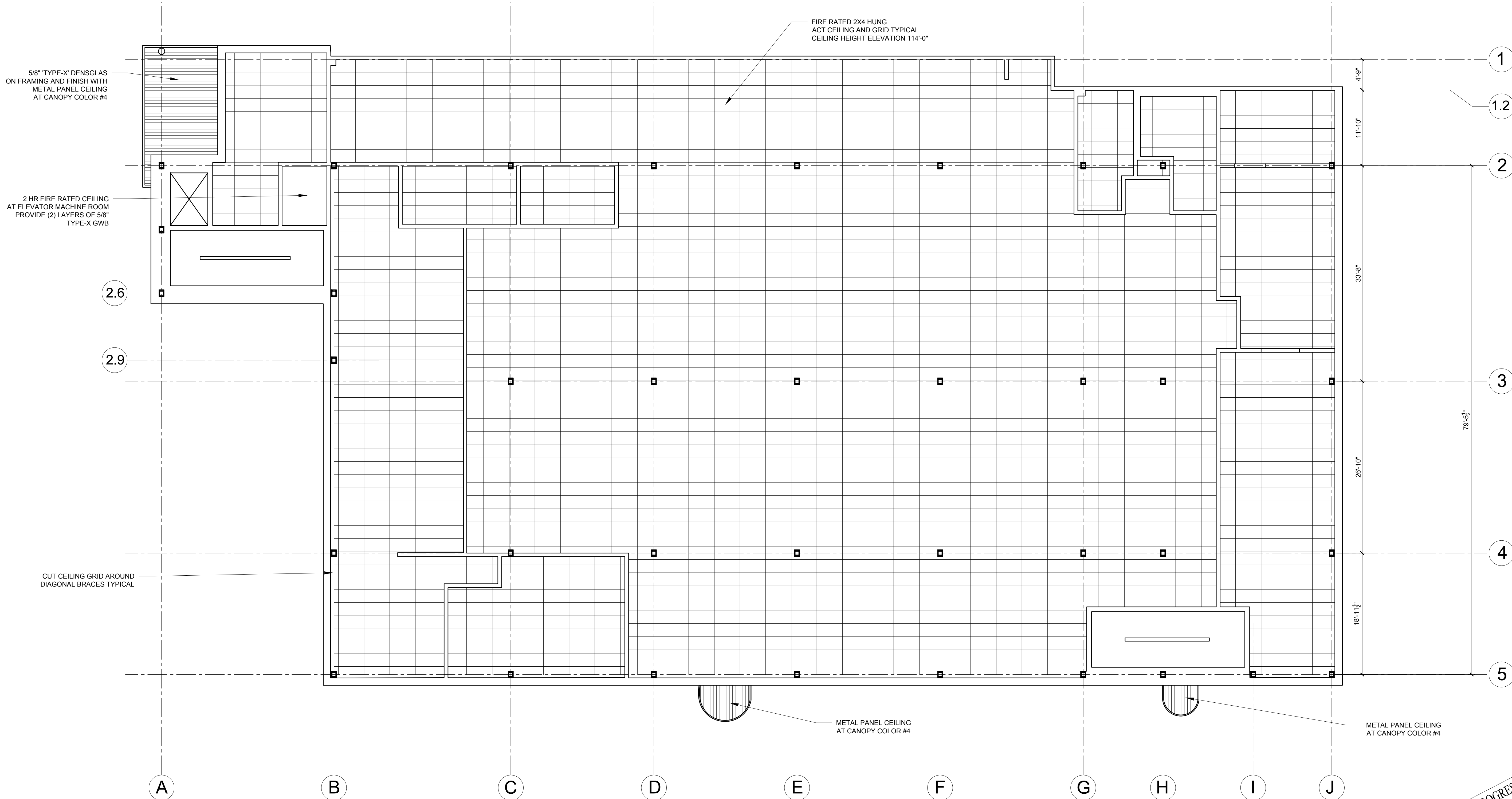


**REFLECTED CEILING PLAN NOTES**

- 1.) SEE ELECTRICAL, MECHANICAL AND SPRINKLER DRAWINGS FOR LOCATIONS OF LIGHTING, EMERGENCY EXIT SIGNS EMERGENCY LIGHTING, MECHANICAL ELEMENTS (DUCTS, VENTS, ETC), SPRINKLER HEADS.
- 2.) G.C. TO ADJUST CEILING GRID AS REQUIRED TO ACCOMMODATE LIGHTING AND MECHANICAL ELEMENTS
- 3.) G.C. TO COORDINATE CEILING LAYOUT WITH TENANT FIT-UP WORK



© 2015 RYAN SENATORE ARCHITECTURE

**ADDITION TO BAYSIDE BOWL**  
 ALDER STREET  
 PORTLAND, MAINE

**RSA**  
 RYAN SENATORE ARCHITECTURE  
 585 CONGRESS STREET  
 PORTLAND, MAINE 04101  
 207-650-6414  
 senatorearchitecture.com

CONSULTANTS:  
 STRUCTURAL:  
 Structural Integrity  
 77 Oak Street  
 Portland, ME 04101  
 207-774-4614

REVISIONS:

DATE: JUNE 09, 2015  
 PROJECT No. 1452  
 DRAWN BY: JPF / RRT / RJS  
 CHECKED BY: RJS  
 SCALE: AS NOTED

SHEET TITLE:  
 FIRST FLOOR REFLECTED CEILING PLAN

PROGRESS PRINT ONLY  
 Not for Construction  
 JUNE 09, 2015

1 FIRST FLOOR REFLECTED CEILING PLAN  
 1/8" = 1'-0"

A1-5