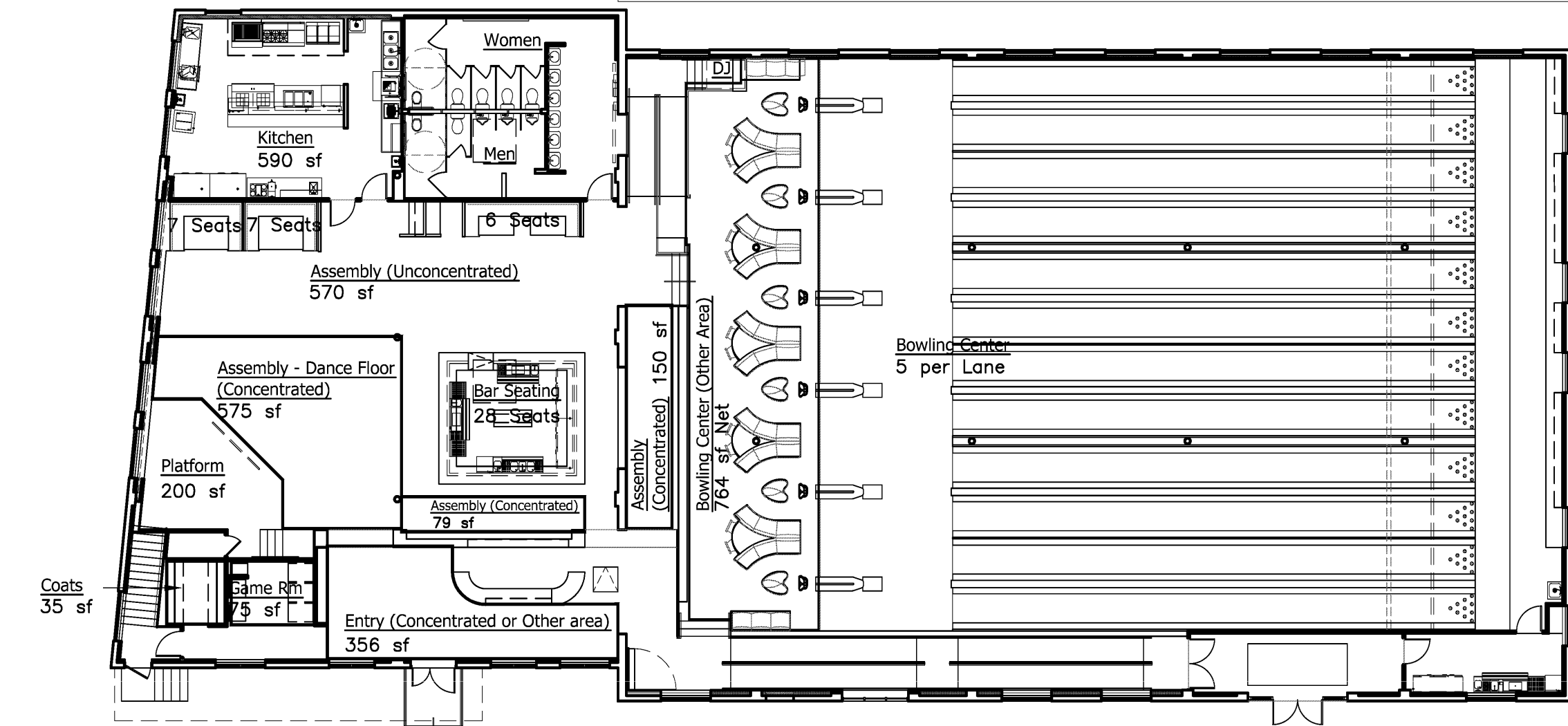
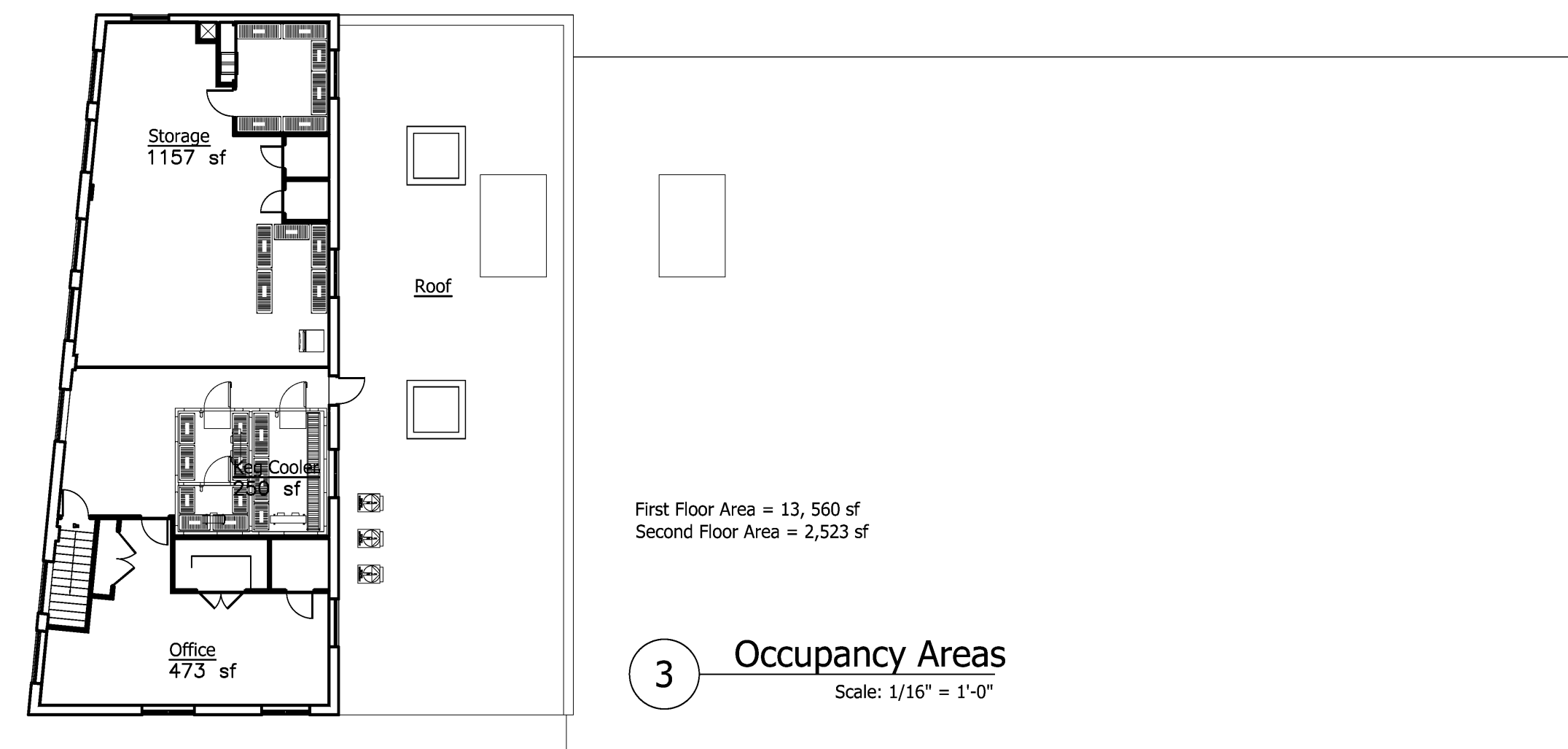
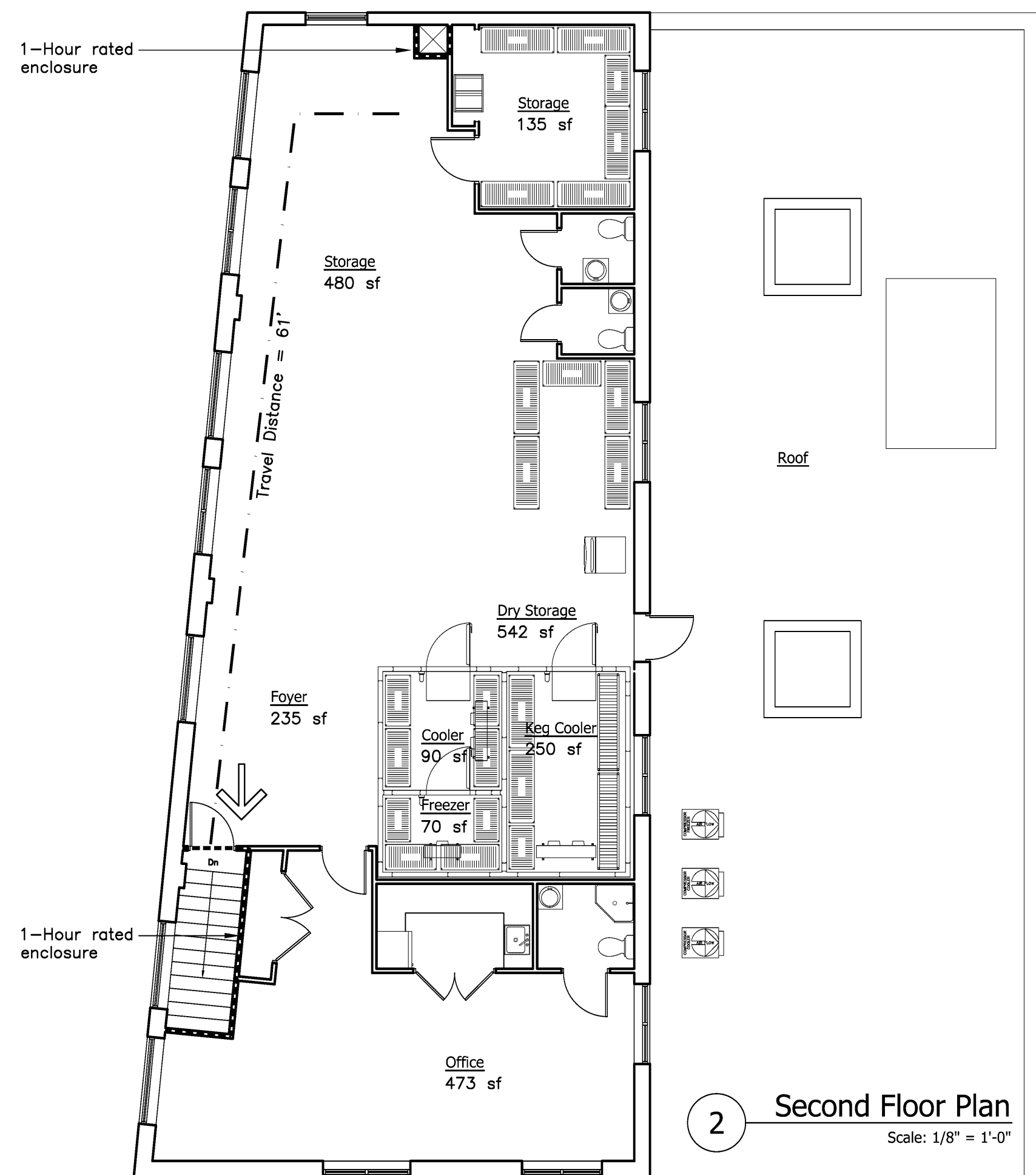


Second Floor Occupant Load

Second Floor	IBC 2003 (Table 1004.1.2)		Life Safety 2003 (Table 7.3.1.2)	
Storage	1157 sf @ 300 gross sf	4 Occupants	1157 sf @ 300 sf	4 Occupants
Office (Business Area)	473 sf @ 100 gross sf	5 Occupants	473 sf @ 100 gross sf	5 Occupants
Total Occupant Load First Floor		9 Occupants		9 Occupants

SECOND FLOOR EXIT

IBC	Stair Egress Second to grade 48" Wide / .2" = 240 Egress Allowable 9 Proposed - OK	NEPA 101	Stair Egress First to grade 48" Wide / .3" = 160 Egress Allowable 9 Proposed - OK
IBC	Door Egress 34" Opening / .15" = 227 Egress Allowable 9 Proposed - OK	NEPA 101	Door Egress 34" Opening / .2" = 170 Egress Allowable 9 Proposed - OK

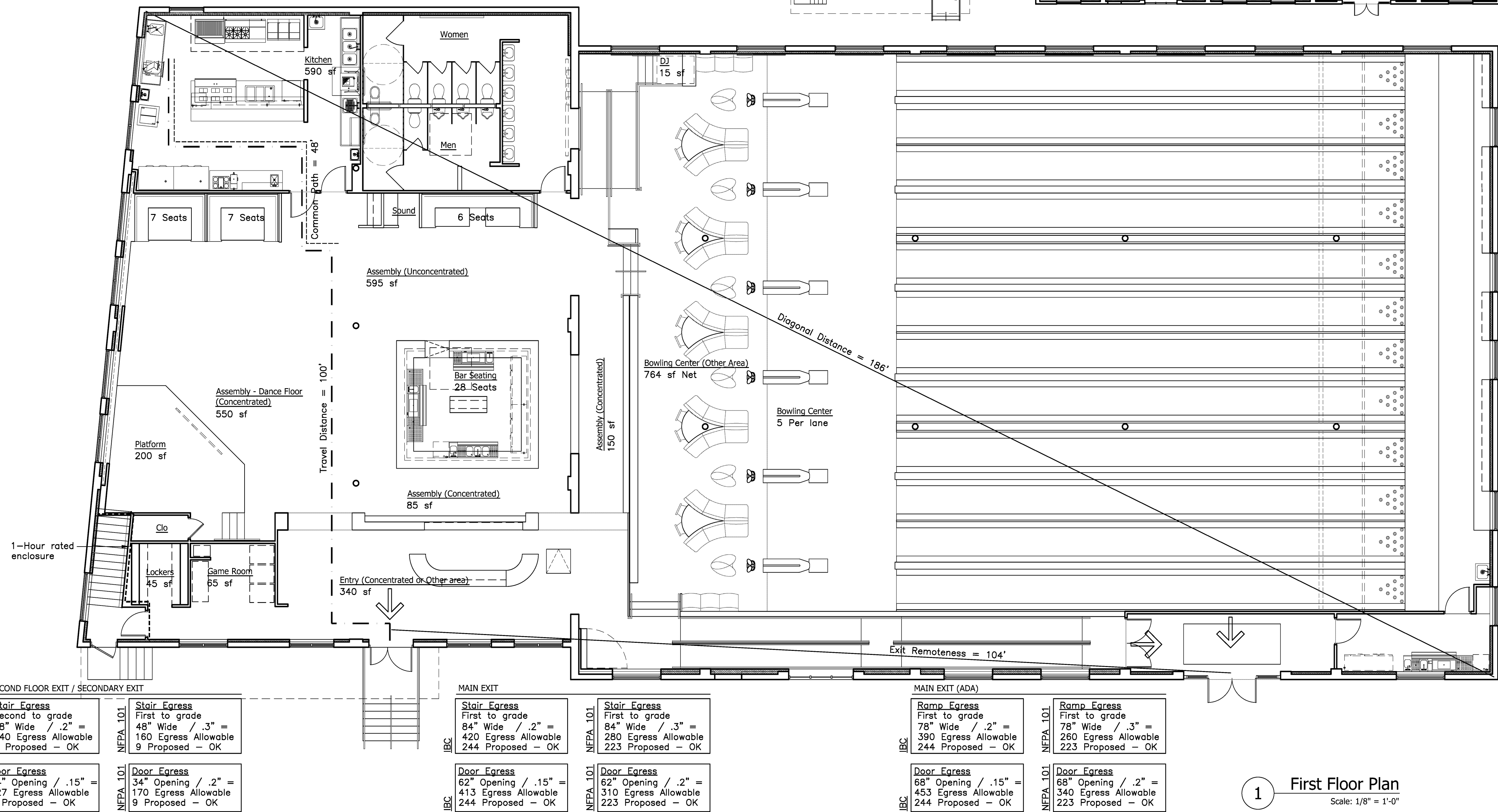


First Floor Occupant Load

First Floor	IBC 2003 (Table 1004.1.2)		Life Safety 2003 (Table 7.3.1.2)	
Bowling Center	12 lanes @ 5 per lane + 764 sf @ 7 sf net	169 Occupants	12 Lanes @ 5 per lane + 764 sf @ 7 sf net	169 Occupants
Assembly Space - Dance Floor (Concentrated)	550 sf @ 5 sf	110 Occupants	550 sf @ 7 sf net	79 Occupants
Fixed Booth Seating	20 Seats	20 Occupants	20 Seats	20 Occupants
Assembly Space - Tables/Chairs (Unconcentrated)	595 sf @ 15 sf net	40 Occupants	595 sf @ 15 sf net	40 Occupants
Assembly Space - Standing (Concentrated)	235 sf @ 5 sf	47 Occupants	235 sf @ 7 sf	34 Occupants
Bar Seating (Actual seats)		28 Occupants		28 Occupants
Kitchen	590 sf @ 200 gross sf	3 Occupants	590 sf @ 100 sf	6 Occupants
Coat Room	45 sf @ 50 gross sf	1 Occupant		
Game Room	65 sf @ 11 gross sf (use Casino)	6 Occupants	65 sf @ 11 sf (use Casino)	6 Occupants
Platform	200 sf @ 15 sf net	13 Occupants	200 sf @ 15 sf	13 Occupants
DJ Booth / Soundboard	40 sf	2 Occupants	40 sf	2 Occupants
Entry (Concentrated or Bowling Center Other Area)	340 sf @ 7 sf	49 Occupants	340 sf @ 7 sf	49 Occupants
Total Occupant Load First Floor		488 Occupants		446 Occupants

Minimum Plumbing Fixtures (Restaurants, Pubs, Lounges)

	Men	Female
Water Closets	249 Occ = 3 WC	249 Occ = 2 Urinals
Lawatories	249 Occ = 3 Lavs	249 Occ = 4 WC (5 to equal Men)



SECOND FLOOR EXIT / SECONDARY EXIT

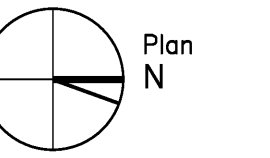
IBC	Stair Egress Second to grade 48" Wide / .2" = 240 Egress Allowable 9 Proposed - OK	NEPA 101	Stair Egress First to grade 48" Wide / .3" = 160 Egress Allowable 9 Proposed - OK
IBC	Door Egress 34" Opening / .15" = 227 Egress Allowable 9 Proposed - OK	NEPA 101	Door Egress 34" Opening / .2" = 170 Egress Allowable 9 Proposed - OK

MAIN EXIT

IBC	Stair Egress First to grade 84" Wide / .2" = 420 Egress Allowable 244 Proposed - OK	NEPA 101	Stair Egress First to grade 84" Wide / .3" = 280 Egress Allowable 223 Proposed - OK
IBC	Door Egress 62" Opening / .15" = 413 Egress Allowable 244 Proposed - OK	NEPA 101	Door Egress 62" Opening / .2" = 310 Egress Allowable 223 Proposed - OK

MAIN EXIT (ADA)

IBC	Ramp Egress First to grade 78" Wide / .2" = 390 Egress Allowable 244 Proposed - OK	NEPA 101	Ramp Egress First to grade 78" Wide / .3" = 260 Egress Allowable 223 Proposed - OK
IBC	Door Egress 68" Opening / .15" = 453 Egress Allowable 244 Proposed - OK	NEPA 101	Door Egress 68" Opening / .2" = 340 Egress Allowable 223 Proposed - OK



Consultants

Casco Bay Engineering
Structural Engineer

Casco Bay Engineering
Civil Engineer

TJM Consulting
Food Service

Urban Dwellings
Interior Design

Revisions