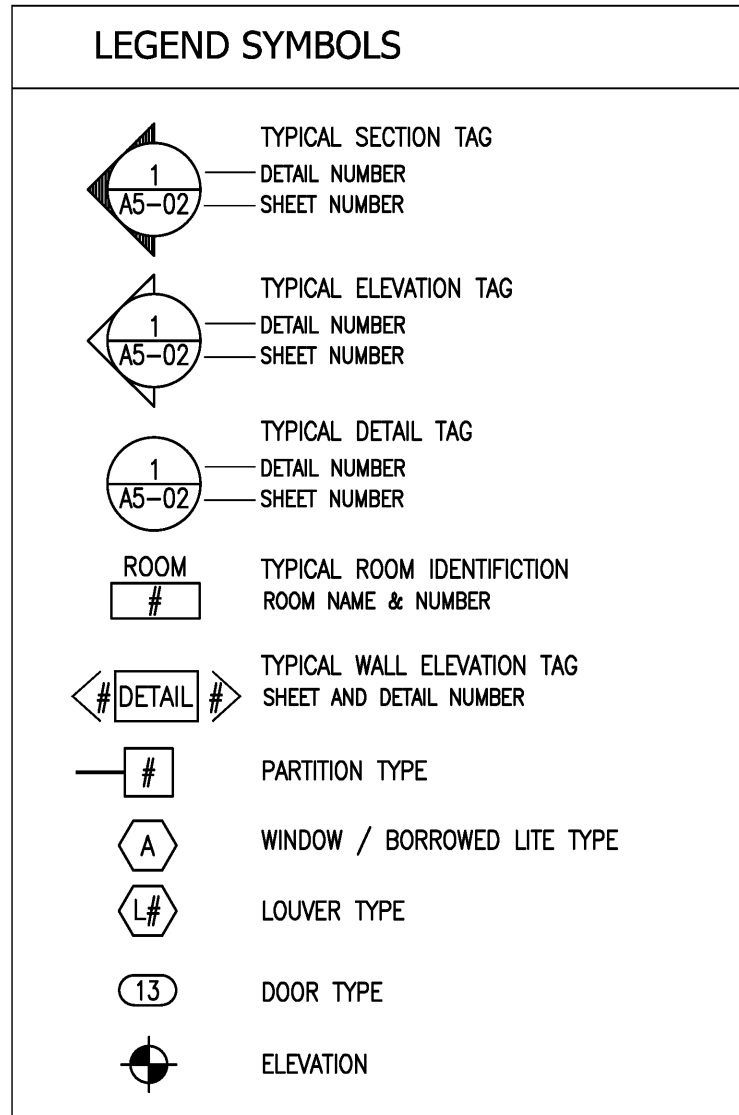


ABBREVIATIONS					
AB	ANCHOR BOLT	FE	FIRE EXTINGUISHER CABINET	PART	PARTICLE BOARD
ACT	ACCUSTICAL TILE	FIN	FINISH	PC	PIECE
ADD'L	ADDITIONAL	FL, FLR	FLOOR	PL	PLATE, PROPERTY LINE
ADMIN	ADMINISTRATION	FT (')	FOOT	PLAS	PLASTER
ALT	ALTERNATE	FTG	FOOTING	PLAS LAM	PLASTIC LAMINATE
ALUM	ALUMINUM	GA	GAUGE	PLYWD	PLYWOOD
AP	ACCESS PANEL	GC	GENERAL CONTRACTOR	PNT	PAINT (ED)
APV	ASPHALT PAVEMENT	GL	GLASS	POLY	POLYETHYLENE
ARCH	ARCHITECT	QWB	GYP. WALL BOARD	PRE	PRE-FINISHED
		GYP	GYP. WALL BOARD	PREP	PREPARATION
BD	BOARD	PSF	POUNDS PER SQUARE FOOT	PSI	POUNDS PER SQUARE INCH
BIT	BITUMINOUS	P.T.	PRESERVATIVE TREATED	P.V.M.T.	PAVEMENT
BLDG	BUILDING	HD	HIGH DENSITY	QT	QUARRY TILE
BLKG	BLOCKING	HR	HOUR	R	RADIUS; RISER; RANGE
BM	BENCH MARK	HC	HOLLOW CORE	RD	ROOF DRAIN
BRG	BEARING	HDWR	HARDWARE	REC	RECREATION
BST	BASEMENT	HFS	HALF FULL SCALE	RECT	RECTANGULAR
BTW	BETWEEN	H, HGT	HEIGHT	REF	REFERENCE; REFER
		HM	HOLLOW METAL	REQ'D	REQUIRED
CAB	CABINET	HTG	HEATING	REFR	REFRIGERATOR
CB	CATCH BASIN	HVAC	HEATING/VENTILATION/AIR CONDITIONING	REINF	REINFORCING
CEM	CEMENT	HW	HOT WATER	RESIL	RESILIENT
CER	CERAMIC	HYD	HYDRANT	REV	REVISED; REVISION
CF	CUBIC FEET	INCL	INCLUDE (D); INCLUDING	RFG	ROOFING
CJ	CONTROL JOINT	ID	INSIDE DIAMETER	RM	ROOM
CL	CEILING	IN (")	INCH	RO	ROUGH OPENING
CMU	CONCRETE MASONRY UNIT	INSUL	INSULATE (D); INSULATION	S	SOUTH; SINK
CO	COLUMN	INT	INTERIOR	SAN	SANITARY
CONC	CONCRETE	INV	INVERT	SC	SOLID CORE
CONST	CONSTRUCTION	JAN	JANITOR	SD	STORM DRAIN
CONT	CONTINUE, CONTINUOUS	JT	JOINT	SECT	SECTION
CORR	CORRUGATED	K, KITCH	KITCHEN	SF	SQUARE FOOT
COORD.	COORDINATE	MAT'L	MATERIAL	SHT	SHEET
CRS	COURSE (S)	MAS	MASONRY	SIM	SIMILAR
CT	CERAMIC TILE	MAX	MAXIMUM	SPEC	SPECIFICATION (S)
CTV	CABLE TELEVISION LINE	MC	MASONRY COURSE	STC	SOUND TRANSMISSION COEFFICIENT
CUH	CABINET UNIT LEADER	MECH	MECHANICAL	STD	STANDARD
CW	COLD WATER	MED	MEDICAL	STL	STEEL
CY	CUBIC YARD	MFR	MANUFACTURER	STOR	STORAGE
		MGR	MANAGER	SUSP	SUSPENDED
D	DRYER	MH	MANHOLE	T	TREAD
DAP	DENS ARMOR PLUS	MIN	MINIMUM	TEL	TELEPHONE
DBL	DOUBLE	MISC	MISCELLANEOUS	TEL-P	PAY TELEPHONE
DEFL	DEFLECTION	MO	MASONRY OPENING	TEMP	TEMPERATURE; TEMPERED
DF	DRINKING FOUNTAIN	MR	MOISTURE RESISTANT	T&G	TONGUE AND GROOVE
DIA	DIAMETER	MTD	MOUNTED	TH	THICKNESS
DIAG	DIAGONAL	MTG	MOUNTING	TO	TOP OF
DIM	DIMENSION	MTL	METAL	TV	TELEVISION
DIV	DIVISION	N	NORTH	TYP	TYPICAL
DN	DOWN	NAT'L	NATURAL	UL	UNDERWRITERS LABORATORIES
DWG	DRAWING	NIC	NOT IN CONTRACT	UTIL	UTILITY
		NL	NIGHT LIGHT	VB	VAPOR BARRIER
E	EAST	NO	NUMBER	VCT	VINYL COMPOSITION TILE
EA	EACH	NOURISH	NOURISHMENT	VENT	VENTILATOR
EF	EXHAUST FAN	NTS	NOT TO SCALE	VERT	VERTICAL
EFJ	EXPANSION JOINT	OA	OVERALL	VEST	VESTIBULE
EL	ELEVATION	OC	ON CENTER	VR	VAPOR RETARDER
ELEV	ELEVATOR	OD	OUTSIDE DIAMETER	W	WEST; WATER; WASHER; WIDTH
ELEC	ELECTRIC (AL)	OH	OPPOSITE HAND	W/D	WITH WASHER DRYER
EQ	EQUAL			WD	WOOD
EW	ELECTRIC WATER COOLER			W/O	WITHOUT
EXAM	EXAMINATION			WWM	WELDED WIRE MESH
EX, EXIST	EXISTING			XEPS	EXTRUDED POLYSTYRENE
EXP	EXPANSION				
EXT	EXTERIOR				
FV	FIELD VERIFY				
FAP	FIRE ALARM PULL STATION				
FBO	FURNISHED BY OTHERS				
FCO	FLOOR CLEAN OUT				
FD	FLOOR DRAIN				
FDN	FOUNDATION				

- ### GENERAL NOTES
- General contractor shall verify all dimensions and report any discrepancies to the architect before proceeding with work. Do not scale drawings, work from dimensions only.
 - Provide appropriate reinforcing within partitions for support of all grab bars, shelving brackets, cabinets, door frames, water coolers, cubbies, fire extinguishers, lighting, and other wall mounted equipment or appliances indicated in documents.
 - All doors shall be located a minimum of 4" (wall to frame) off adjoining stud walls, except where noted or dimensioned otherwise.
 - All handicapped toilet rooms, grab bars, and door openings shall meet the requirements of ANSI 117.1 latest edition, and the American Disability Act (ADA) for handicapped accessibility.
 - All gypsum wall board within 3'-0" of plumbing fixtures shall be moisture resistant.
 - All gypsum board in the basement shall be Dens Armour Plus, paperless gypsum board, NO EXCEPTIONS.
 - Before penetrating or otherwise modifying joists, beams, or other structural members, consult with the Architect on maximum size and location of penetrations.
 - Provide double studs at all door frames over 3'-0" wide.
 - All materials in this building shall be new and not previously used, unless noted as "Existing to be relocated."
 - All penetrations through rated walls and floor/ceiling assemblies shall be firestopped by specific subcontractor requiring penetration.



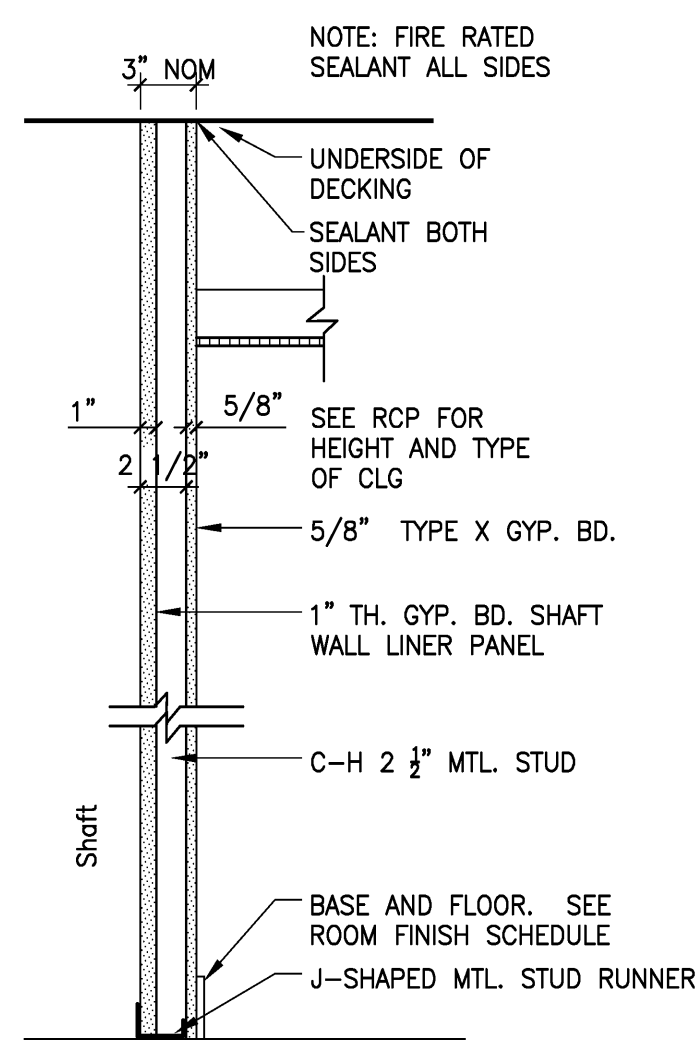
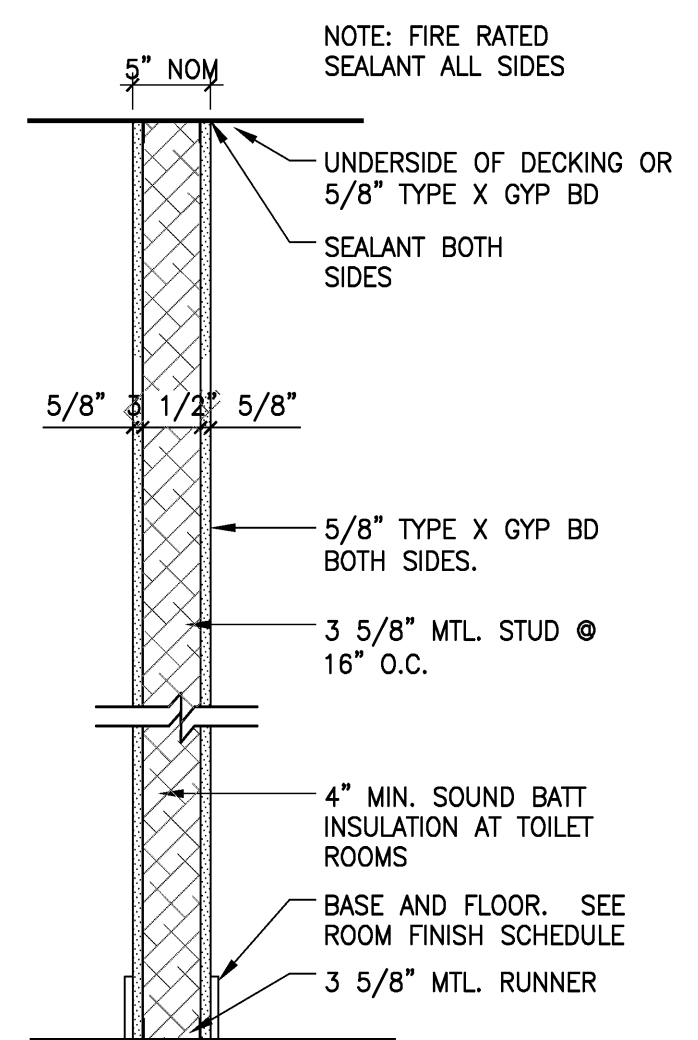
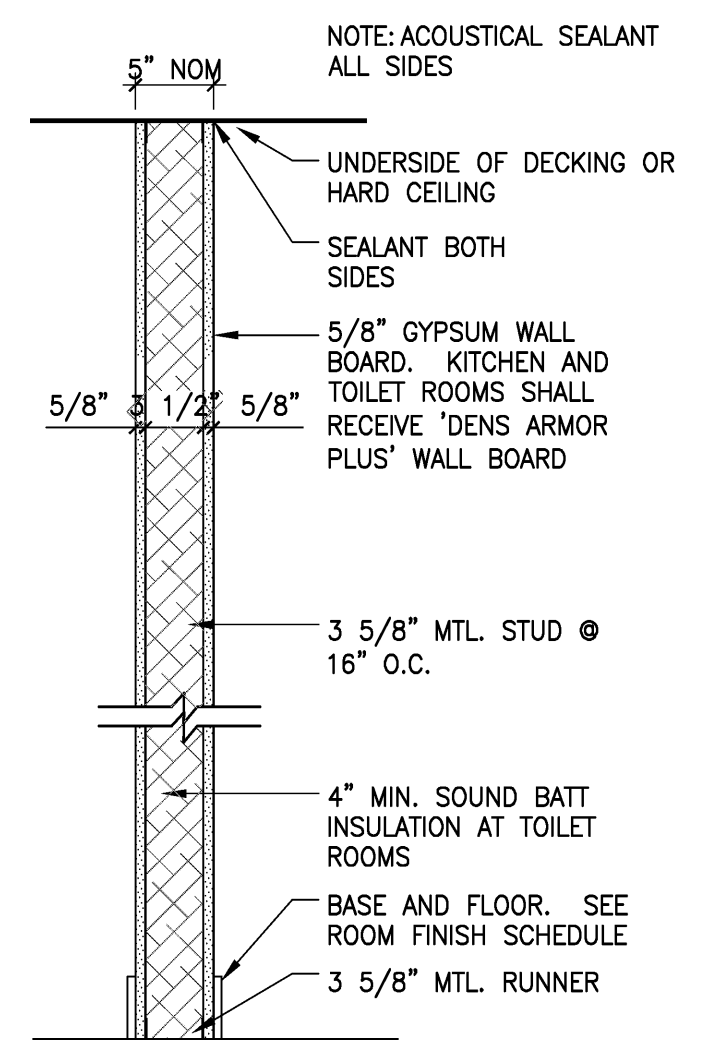
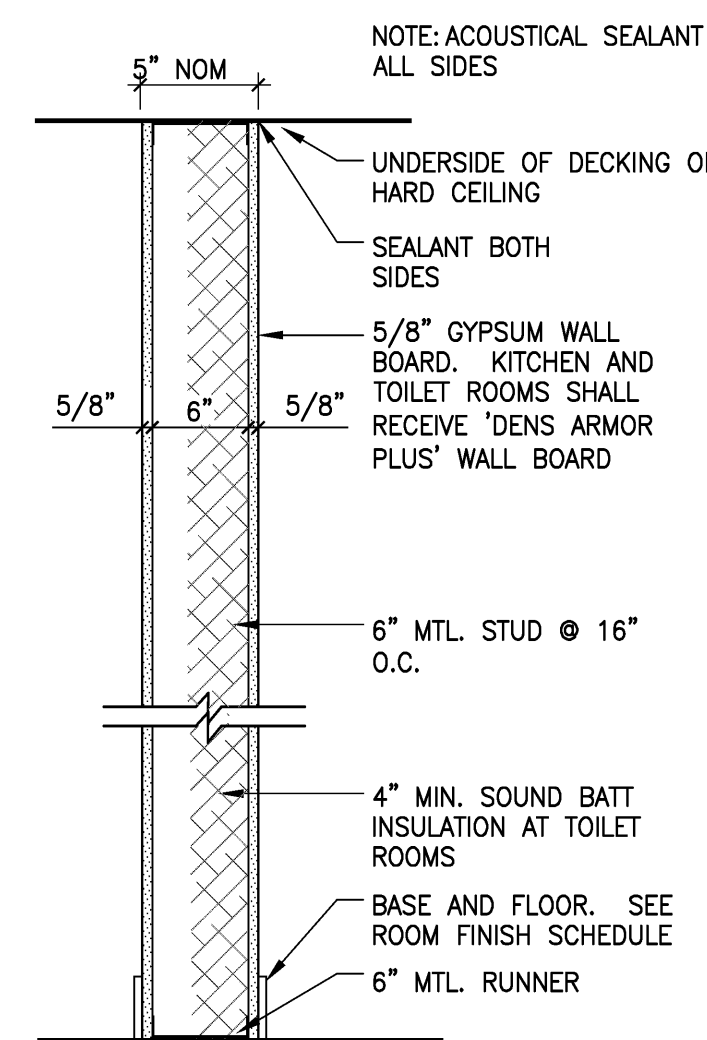
- ### ALTERNATE LIST
- Add canopy at ADA entrance: Base bid includes storefront system, aluminum fascia where future canopy will be installed, and lighting fixtures above the entrance.
 - Add metal canopy above entrance, remove canvas awning and frame, add one exterior light fixture. Base bid includes a new canvas awning on existing frame.
 - Add dividing wall wood louvers and two storefront windows with vertical wood louvers in vestibule. Base bid includes the construction of a partition wall faced with 5/8" gypsum board and paint with no openings.
 - Add wood louvers infill at existing windows, omit 3m film. Base bid includes the attachment of a 3m film on existing windows.
 - Add bowing alley wall plywood panels, perforated metal, Tectum panels, birch baseboard and lighting (omit Kinetic perforated metal sound absorption panels and gypsum board). Base bid includes the construction of gypsum board wall and paint, and the installation of Kinetic perforated metal sound absorption panels.
 - Add plywood panels and birch baseboard at stage area, omit gypsum board. Base bid includes the construction of gypsum board and paint finish.
 - Add poured-in-place concrete trough sink, omit porcelain sinks.
 - Add merchandise / trophy case and lighting for case.
 - Add "future" bar equipment, new FRP wall finish and new sliding or casement in-swing storefront window (requires cutting existing brick). Base bid includes the rough-in of plumbing and electrical requirements only for future bar.
 - Add drapery coil curtain, curtain track and curtain pockets.
 - Add sound curtain, curtain track and curtain lighting.
 - Add sound absorption and fluorescent fixture detail. Base bid includes the installation of fluorescent fixtures only.
 - Add LED light fixtures in lieu of halogen fixtures.

DRAWING LIST

REFERENCE DRAWINGS	
CVR	Cover Sheet
R.1	General Notes, Part Types, Drawing List, Alternates
R.2	Code Review Plan
R.3	Code Analysis
R.4	Outline Specifications
SITE DRAWINGS	
L.1	Existing Conditions & Standard Boundary Survey
L.2	Site Grading and Utility Plan
L.3	Site Details
L.4	Site Details
L.5	Erosion Control Details
ARCHITECTURAL DRAWINGS	
D1.1	Demolition Floor Plans
A1.1	Proposed Floor Plans / Roof Details - Base Bid
A1.2	Enlarged Floor Plan - Base Bid
A1.3	Enlarged Floor Plans - Alternate
A2.1	Building Elevations
A2.2	Building Elevations
A3.1	Building Sections - Base Bid
A3.1A	Building Sections - Alternates
A3.2	Building Sections - Base Bid / Alternate
A3.3	Building Sections - Base Bid / Alternates
A3.4	Building Sections - Base Bid / Alternates
A3.5	Wall Sections - Base Bid
A3.5A	Wall Sections - Alternates
A3.6	Wall Sections
A3.7	Wall Sections - Canopy
A5.1	Interior Elevations - Base Bid
A5.2	Interior Elevations - Base Bid
A5.3	Interior Elevations - Base Bid
A5.4	Interior Elevations - Base Bid
A5.5	Interior Elevations - Base Bid
A5.6	Interior Elevations - Base Bid / Alternate #7
A5.7	Interior Elevations - Alternates
A5.8	Interior Elevations - Alternates
A5.9	Interior Elevations - Alternates
A7.1	Reflected Ceiling Plan and Ltg Equipment
A9.1	Interior Finish, Door Schedule and Storefront
A9.2	Storefront Details
A9.3	Storefront and Door Details
A9.4	Casework / Millwork Details
A9.5	Casework / Millwork Details
A9.6	Interior Details
FOOD SERVICE DRAWINGS	
FS-1A	Floor Plan and Schedule
FS-1B	Floor Plan and Schedule
FS-2	Mechanical Schedule
FS-3A	Electrical Rough-in Plan
FS-3B	Electrical Rough-in Plan
FS-4A	Plumbing Rough-in Plan
FS-4B	Plumbing Rough-in Plan
FS-5	Walk-in Details
FS-6	Details and Elevations
FS-7	Chef's Counter
KITCHEN HOOD DRAWINGS	
1	Hood
2	Hood
3	Fan
4	Fan
5	Fan
6	Heater Wiring
7	Heater Wiring
8	Electrical Control Panel
9	Electrical Control Panel
10	EMS
11	Duct
LIFE SAFETY DRAWINGS	
LS.1	Electrical Life Safety Plan
STRUCTURAL NOTES	
S0	Structural Notes
S1.0	Foundation Plan
S1.1	First Floor Framing Plan
S1.2	Second Floor and Lower Roof Framing Plan
S2.1	Structural Details
S2.2	Structural Details
S3.1	Braced Frame Details

Partition Type Notes

- All rated and smoke tight partitions are continuous through ceiling and sealed tight with fire rated sealant to the underside of decking / sheathing.
- All stud walls under beams and decks shall have deflection joints.
- Provide tile backer board at walls scheduled to receive ceramic tile.
- Provide Dens Armour Plus gypsum board at kitchen and toilet rooms.
- Layout steel studs to conform to 4'-0" module where required to install gypsum board vertically to comply with tested fire-rated wall assemblies.
- Penetrations through walls to be acoustically or smoke sealed shall have sealant system conforming to approved installations.
- Caulk at all gypsum / brick wall joints.
- See structural drawings for reinforcing and seismic bracing.
- Provide metal 'J' bead at drywall to wood / plywood joints UNO.



1 Partition Types

Scale: 1/2" = 1'-0"

Consultants

Casco Bay Engineering
Structural Engineer

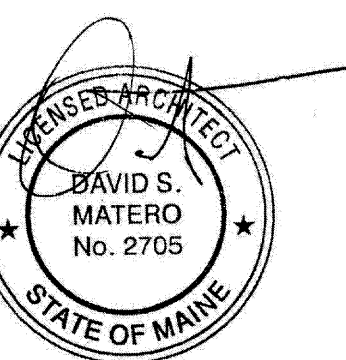
Casco Bay Engineering
Civil Engineer

TJM Consulting
Food Service

Urban Dwellings
Interior Design

Revisions

Bowl Portland
58 Alder Street Portland, Maine



Job Number: 09.017

Date: 07.Dec.09

Scale: As Noted

Drawing Title:

Gen. Notes,
Partition Types,
Drawing List,
Alternate List

R.1
Issue for Bid