

Consultants
 Casco Bay Engineering
 Structural Engineer

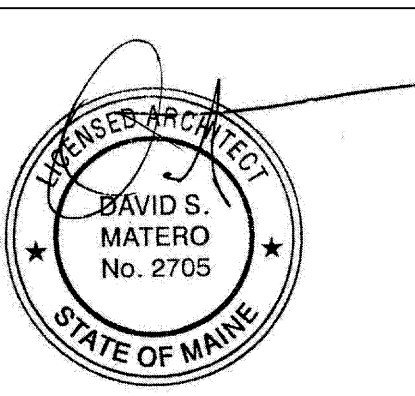
Casco Bay Engineering
 Civil Engineer

TJM Consulting
 Food Service

Urban Dwellings
 Interior Design

Revisions

Bowl Portland
 58 Alder Street Portland, Maine



Job Number: 09.017

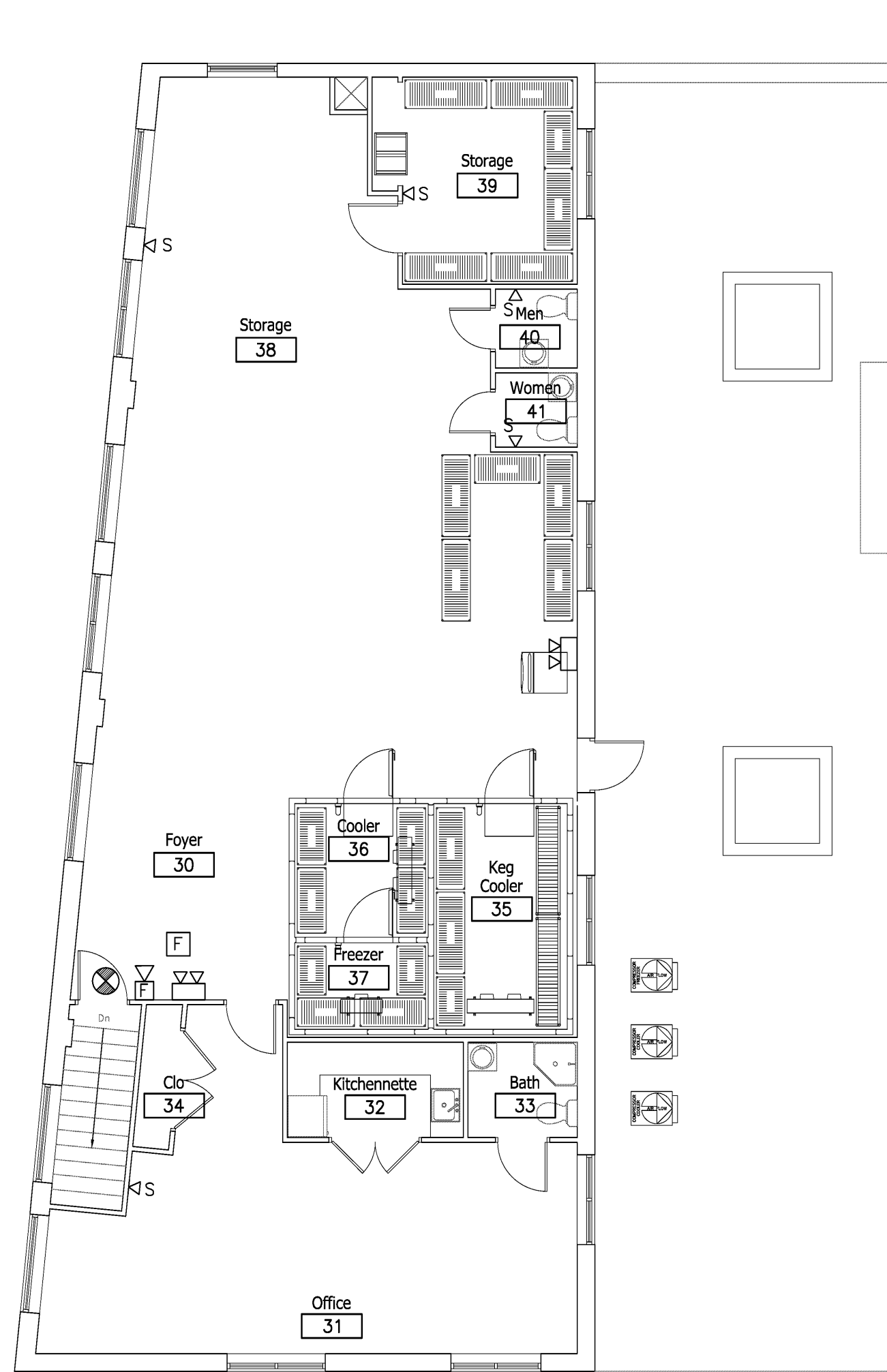
Date: 07.Dec.09

Scale: 1/8" = 1'-0"

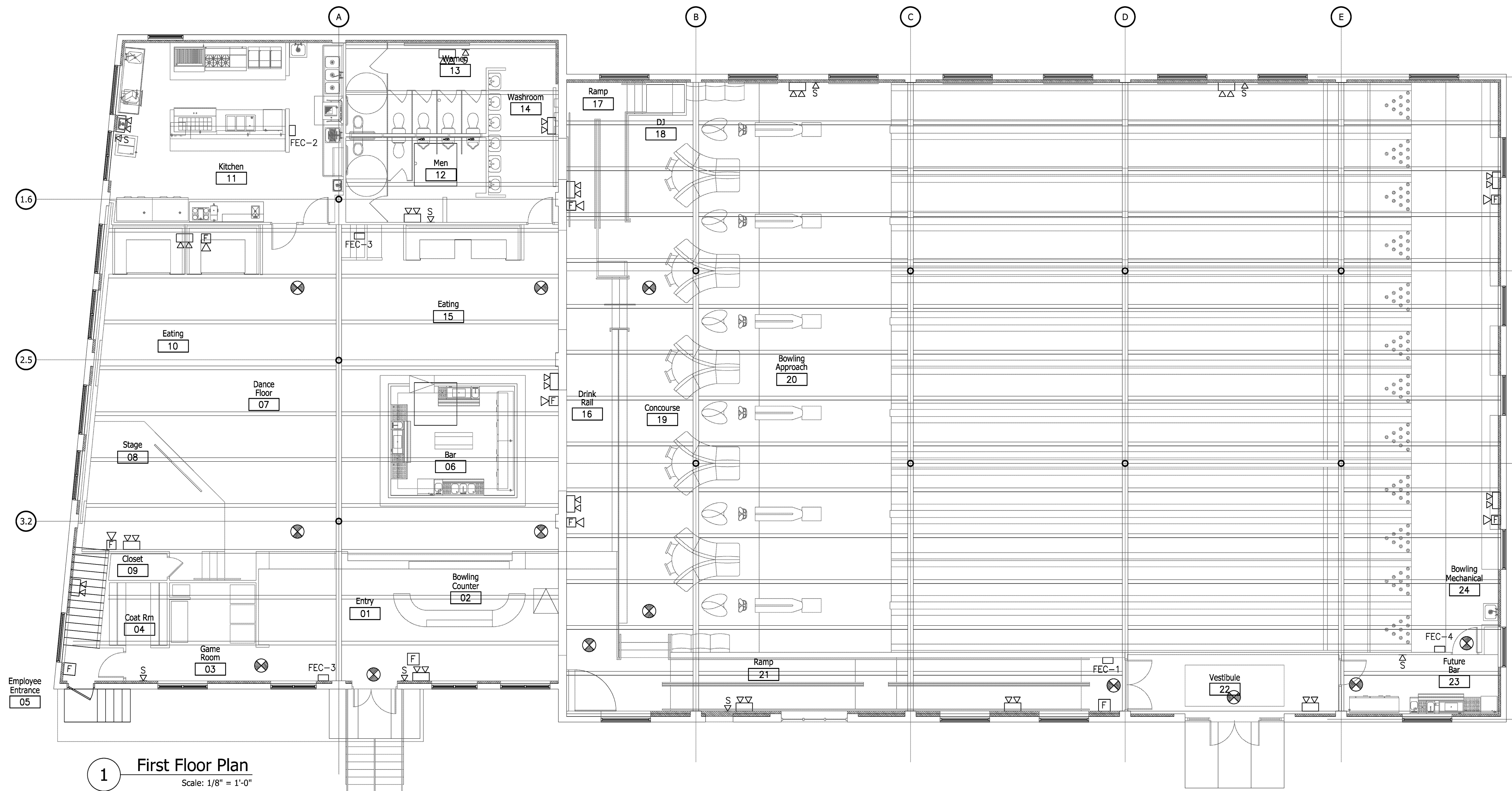
Drawing Title:

Electrical Life Safety Plan

LS.1
 Issue for Bid



2 Second Floor Plan
 Scale: 1/8" = 1'-0"



1 First Floor Plan
 Scale: 1/8" = 1'-0"

SYMBOL LEGEND

- ⊗ LED Exit Light
- ⊗ LED Exit Light w/ Directional Arrow
- ⊕ Self Contained Emergency Battery Unit
- ▽ Single Head Remote Emergency Light
- ⊠ Fire Alarm Audio/Visual, mount 6'-8" AFF, dB Level in Field
- ⊠ Fire Alarm Visual Strobe only, Flush mount 6'-8" AFF, set Candela Level in Field according to code
- ⊙ System connected Smoke Detector, photoelectric type w/ Sounder base
- ⊠ Fire Alarm pull station, mount 48" AFF
- MHO Magnetic Hold Open
- ⊠ Fire extinguisher cabinet and type
- FEC-# Fire extinguisher cabinet and type
- ETR Existing to Remain

Fire Extinguisher Cabinet

FEC-1	Larsen Architectural Series, Solid door with Larsen lock, aluminum, recessed with recessed handle to meet ADA. Cabinet type FS 2409-R1, include type MP5 fire extinguisher
FEC-2	Larsen Architectural Series, Solid door with Larsen lock, aluminum, recessed with recessed handle to meet ADA. Cabinet type FS 2409-R1, include type fire extinguisher for Class K hazard
FEC-3	Larsen Architectural Series, Solid door with Larsen lock, aluminum, semi-recessed type 2409-R4. Provide type MP5 fire extinguisher
FEC-4	Standard surface mounted fire extinguisher and bracket

Portable Fire Extinguishers:

1. Location of fire extinguishers and cabinets shall conform to NFPA 10 Standards for Fire Extinguisher Cabinets.
2. Portable fire extinguisher rating shall be 2-A, spacing shall not exceed a maximum of 75' and 3,000 sq. ft.
3. Portable fire extinguisher rating in combustible cooking media exist shall be rated Class K, spacing shall not exceed a maximum travel distance of 30'

NOTES

1. Life safety equipment and locations shall conform to all applicable codes.
2. Fully test and inspect sprinkler system.
3. Provide smoke detectors on both sides of doors with magnetic hold opens.
4. Provide pull station at each assembly door egress.
5. Provide duct smoke detectors at each 2,000 CFM supply duct.
6. Provide duct smoke detectors at each 15,000 CFM supply and exhaust duct.
7. Obtain water supply flow test if available within last three years, if not available test must be conducted.
8. All sprinkler heads must be quick response type.
9. Integrate kitchen smoke/fire detection/suppression system with main fire panel. Provide automatic cooking fuel shut-off mechanism.
10. Electrical outlets shall be provided for all plug-in equipment. All other outlets shall be located per all applicable codes.
11. Refer to food service drawings for all equipment requiring direct wiring.
12. All switches, outlets and covers to be white unless otherwise noted. See lighting plans for switch locations.
13. Fire alarm system notification shall be via approved voice communication, or public address system that is audible above the ambient noise level of assembly occupancy. Notification shall be by means of voice announcements, either live or prerecorded initiated by the person in the constantly attended location.