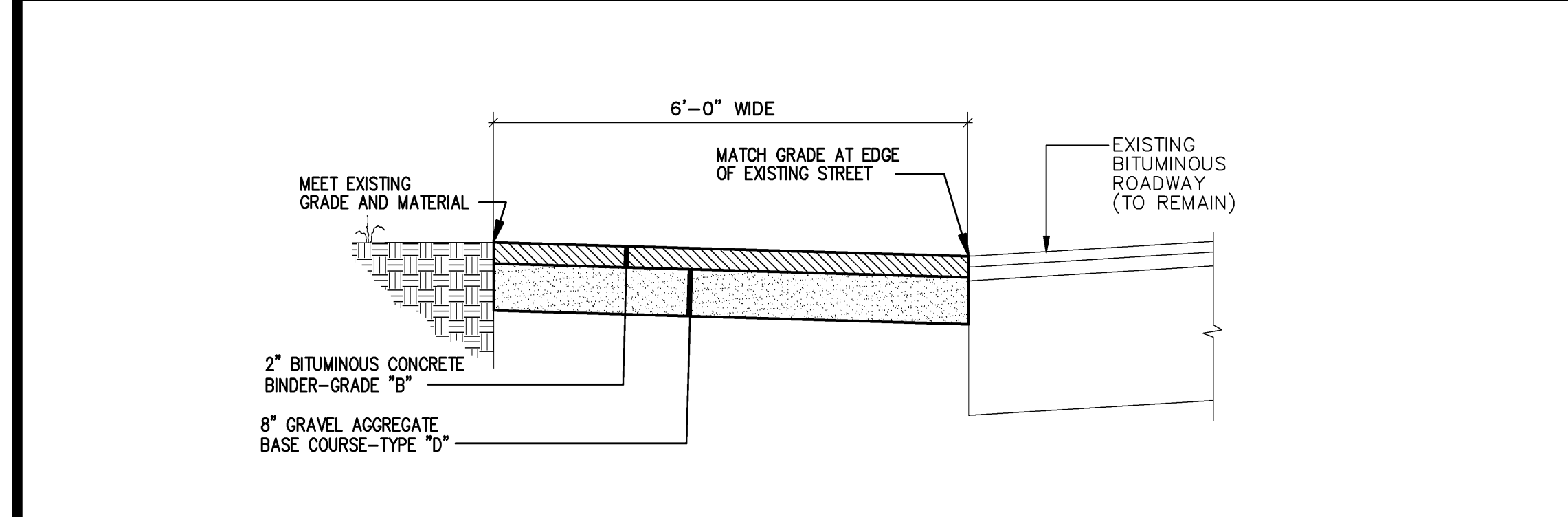


NO.	DATE	ISSUE
A	01-10-09	PLANNING REVIEW
B	10-2-09	PLANNING REVIEW
C	10-30-09	DESIGN DEVELOPMENT
D	12-7-09	ISSUED FOR BID

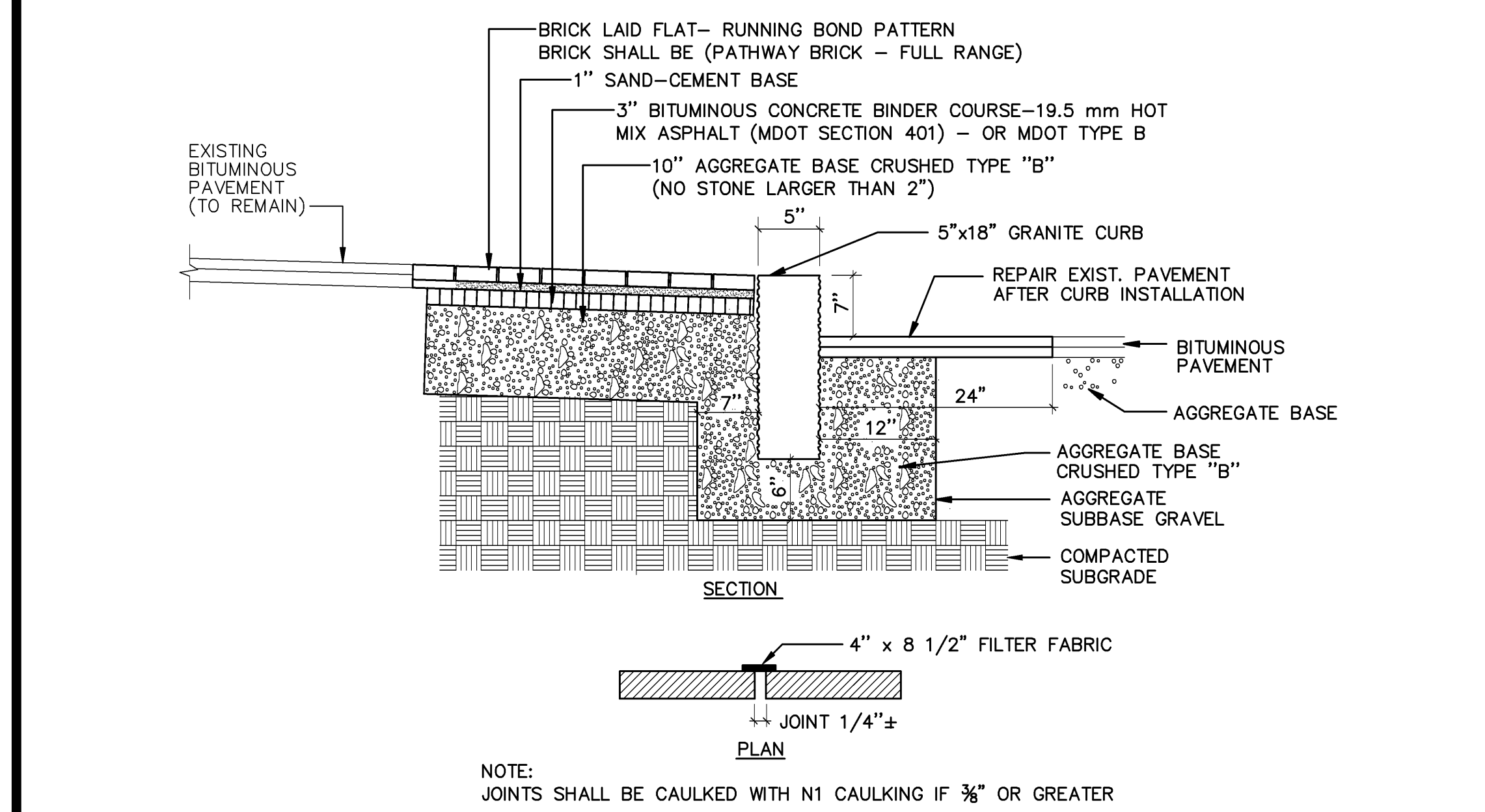
SHEET TITLE:  
**SITE DETAILS, SHEET 1**

DESIGNED: ED  
 DRAWN: ED  
 DATE: 8-27-09  
 CADD FILE: 9065-DETAILS.DWG  
 PROJECT NUMBER: 9065



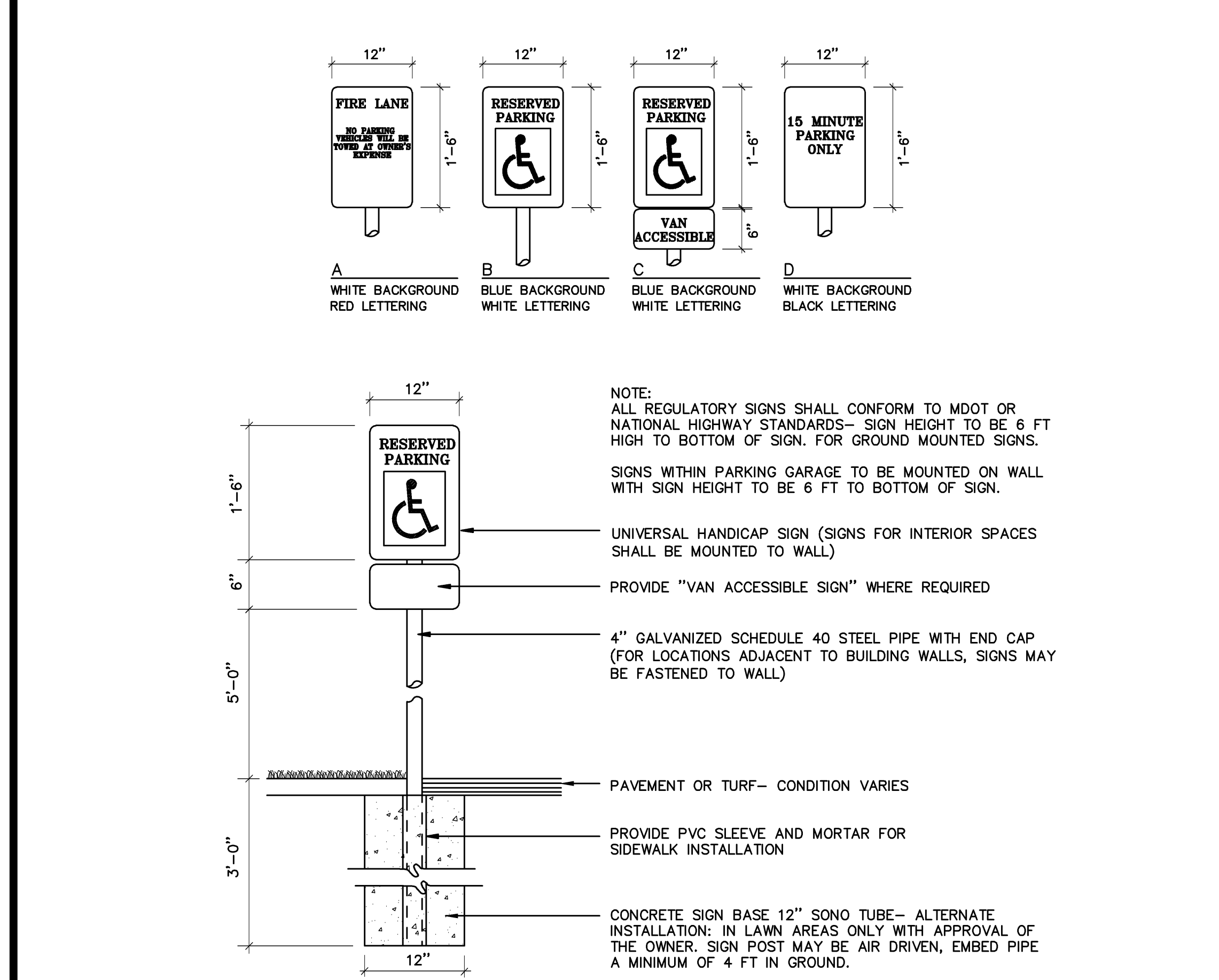
**PAVED APRON DETAIL**

NTS



**BRICK SIDEWALK WITH GRANITE CURB DETAIL**

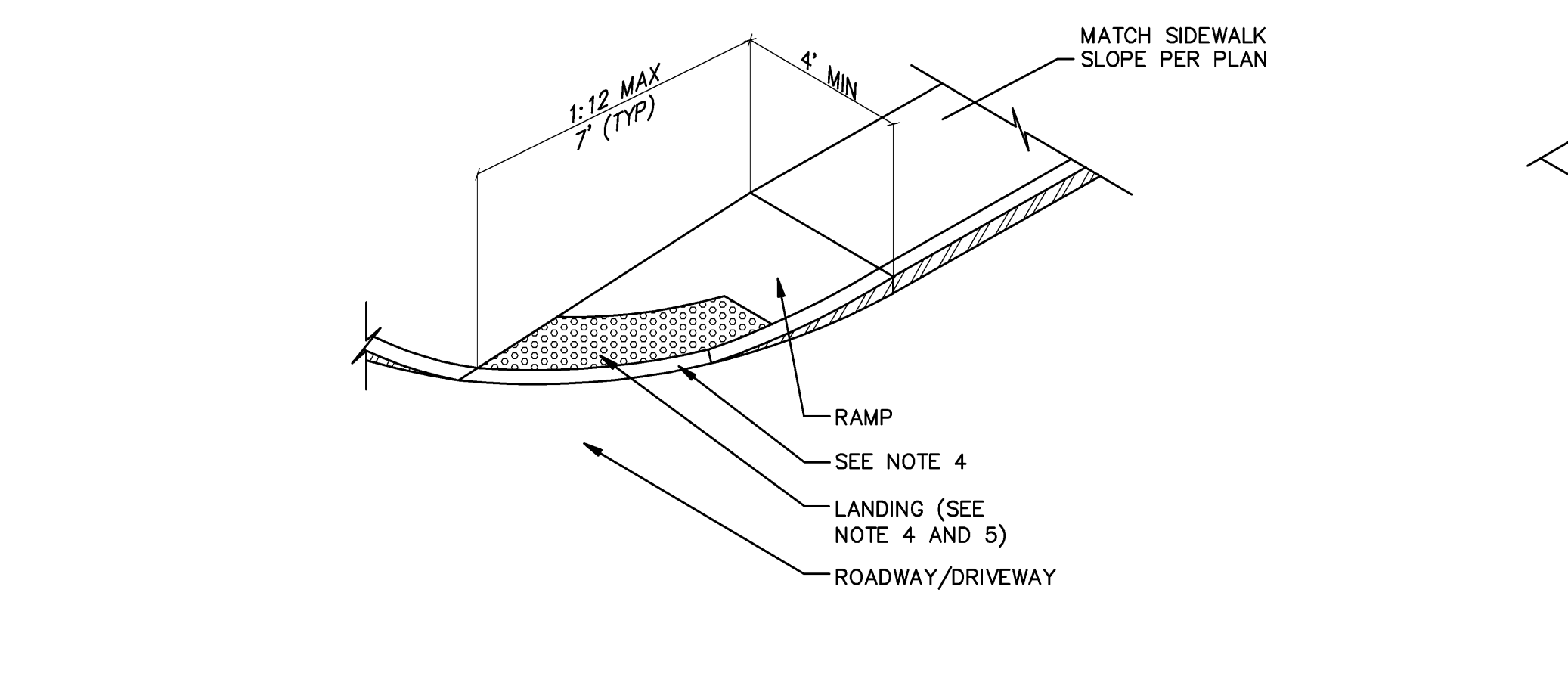
NTS



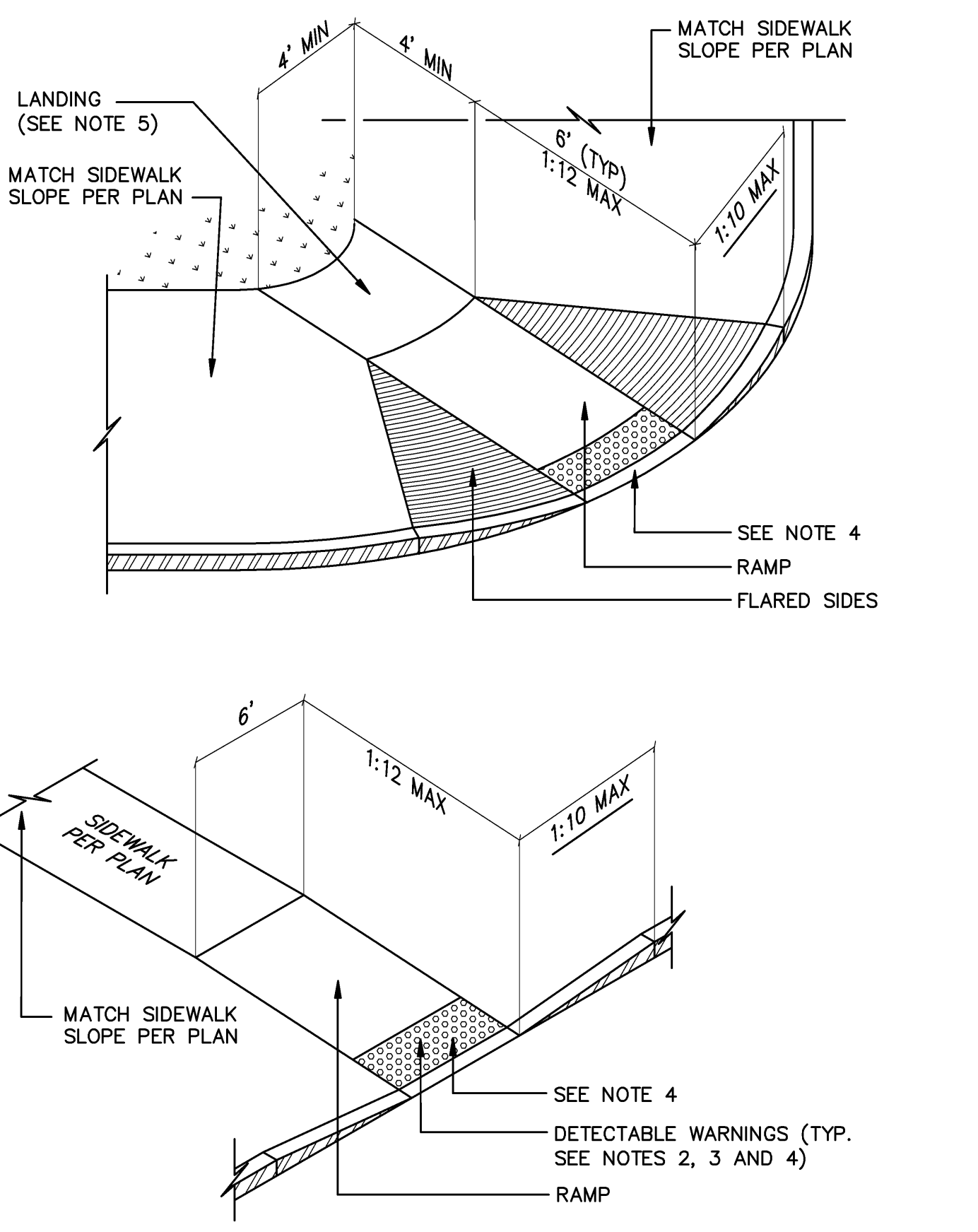
**TYP. SIGNAGE DETAIL**

NTS

- NOTES:
- CURB RAMP LENGTHS ARE BASED ON SIX (6) INCH CURB REVEAL HEIGHT AND NO RUNNING SLOPE. RAMP LENGTHS SHALL BE ADJUSTED AS NECESSARY TO ACCOMMODATE VARYING CURB REVEAL HEIGHTS AND TO MATCH RUNNING SLOPES OF ADJACENT ROADWAY AND SIDEWALK SLOPES TO MAINTAIN A RAMP THAT DOES NOT EXCEED THE MAXIMUM RAMP SLOPE OF 1:12.
  - DETECTABLE WARNINGS SHALL CONSIST OF RAISED TRUNCATED DOMES AND SHALL HAVE A BASE DIAMETER OF 0.9 INCHES (23 mm) MINIMUM AND 1.4 INCHES (36 mm) MAXIMUM; A TOP DIAMETER OF 50 PERCENT OF THE BASE DIAMETER MINIMUM TO 65 PERCENT OF THE BASE DIAMETER MAXIMUM AND A HEIGHT OF 0.2 INCHES (5.1 mm). A CENTER-TO-CENTER SPACING OF 1.6 INCHES (41mm) MINIMUM AND 2.4 INCHES (61mm) MAXIMUM; AND A BASE-TO-BASE SPACING OF 0.65 INCHES (17mm) MINIMUM, MEASURED BETWEEN THE MOST ADJACENT DOMES ON A SQUARE GRID.
  - DETECTABLE WARNINGS SHALL CONTRAST VISUALLY WITH ADJOINING SURFACES, EITHER LIGHT-ON-DARK, OR DARK-ON-LIGHT. THE MATERIAL USED TO PROVIDE CONTRAST SHALL BE AN INTEGRAL PART OF THE WALKING SURFACE. DETECTABLE WARNINGS USED ON INTERIOR SURFACES SHALL DIFFER FROM ADJOINING WALKING SURFACES IN RESILIENCY OR SOUND-ON-CANE CONTACT.
  - ALL ACCESSIBLE ROUTE SIDEWALKS INTERSECTING ROADWAYS, DRIVEWAYS, OR OTHER VEHICULAR CROSSINGS REQUIRE DETECTABLE WARNINGS. DETECTABLE WARNING ZONES SHALL BE INSTALLED SIX (6) INCHES (OR THE HORIZONTAL THICKNESS OF THE ADJACENT CURB) FROM THE FLOW LINE OF THE CURB, EXTEND INTO THE SIDEWALK FOR A 24" DEPTH, AND COVER THE COMPLETE WIDTH OF THE SIDEWALK OR RAMP AREA. DETECTABLE WARNING ZONES SHALL CONFORM TO THE SLOPE REQUIREMENTS OF THE RAMP, LANDING, OR ACCESSIBLE ROUTE AS DEFINED IN THE SPECIFIED DETAIL. DETECTABLE WARNINGS SHALL NOT BE INSTALLED IN FLARED SIDES, IF THE RAMP INCLUDES FLARED SIDES.
  - ALL LANDING AREAS SHALL BE 4 FEET WIDE BY 4 FEET LONG (MINIMUM DIMENSIONS). THE SLOPE OF THE LANDING AREA SHALL NOT EXCEED A 1:48 IN ANY DIRECTION.
  - ALL ACCESSIBLE ROUTE SLOPES ADJOINING THE LANDING AREA, EXCLUDING THE CURB RAMP, SHALL NOT EXCEED A SLOPE OF 1:20 UNLESS OTHERWISE NOTED.

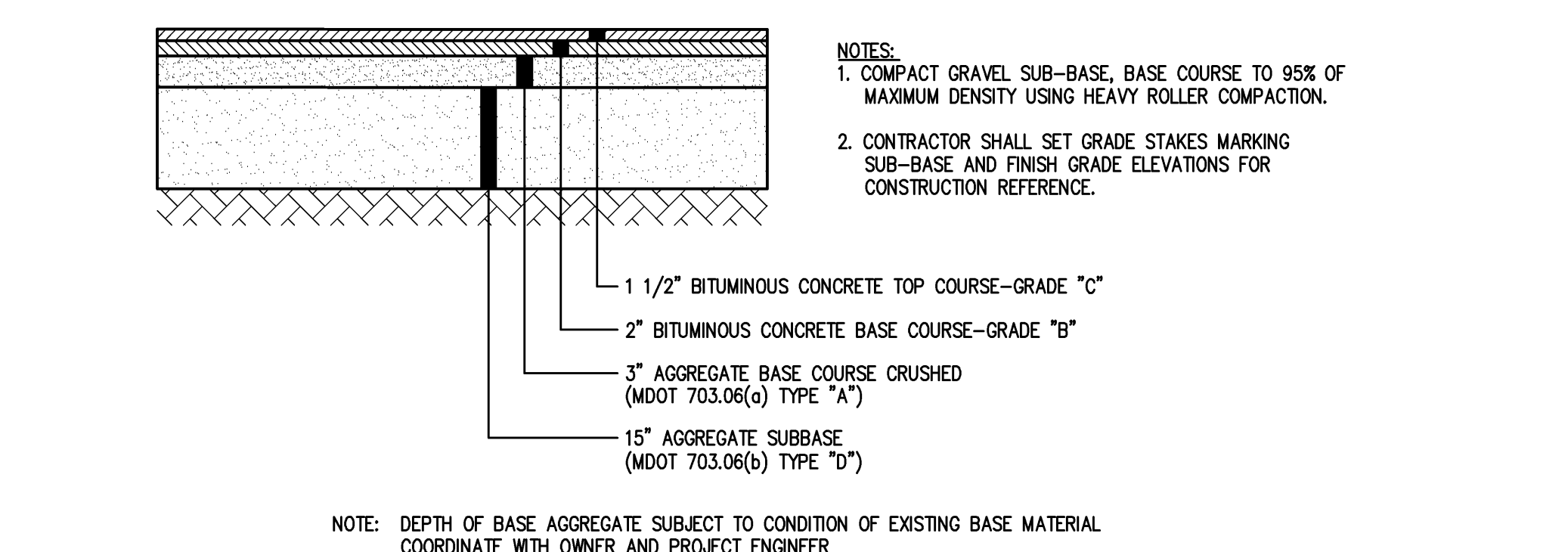


**HANDICAP RAMP DETAIL**



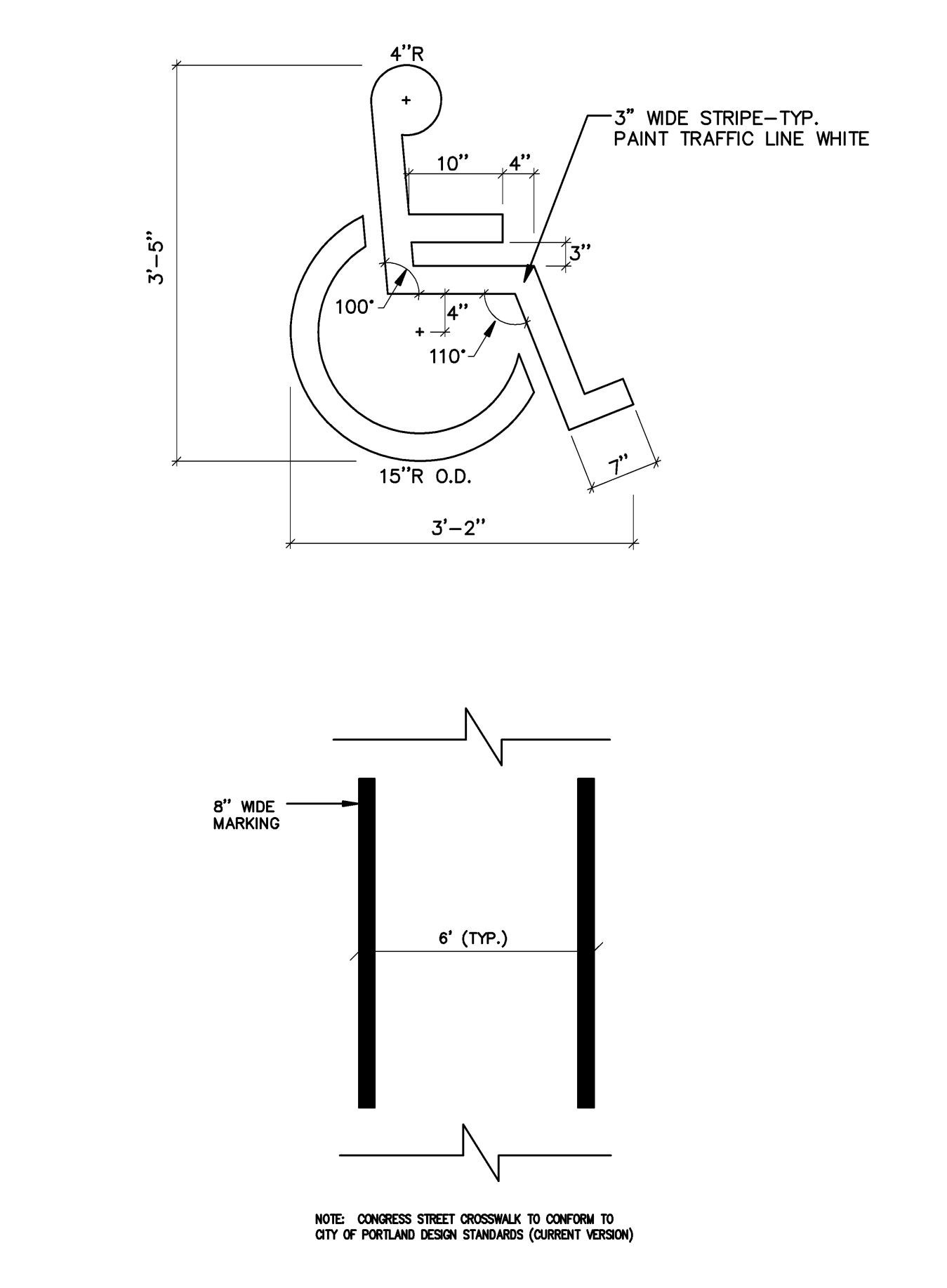
**TRANSITIONAL CURB END DETAIL**

NTS



**TYP. PAVED PARKING LOT SECTION**

NTS



**PAINTED MARKINGS DETAIL**

NTS