

EXHAUST FAN INFORMATION

FAN UNIT NO.	FAN UNIT MODEL #	MODEL	TAG	CFM	S.P.	RPM	H.P.	Ø	VOLT	FLA	WEIGHT (LBS.)
1	NRTP.B-A2-D.500-G15-NCA24HPFA	NCA24HPFA		3850	1.750	1017	3.000	3	208	9.5	1168.31
2	DU33HFA	DU33HFA		700	0.750	1455	0.333	1	115	4.1	96.27

HEATER/MUA FAN INFORMATION

FAN UNIT NO.	FAN UNIT MODEL #	BLOWER	HOUSING	TAG	CFM	S.P.	RPM	H.P.	Ø	VOLT	FLA	WEIGHT (LBS.)
1	NRTP.B-A2-D.500-G15-NCA24HPFA	G15	A2-D.500B		3080	0.500	793	1.500	3	208	4.7	1168.31

GAS FIRED MAKE-UP AIR UNIT(S)

FAN UNIT NO.	INPUT BTUs	OUTPUT BTUs	TEMP. RISE	REQUIRED INPUT GAS PRESSURE	GAS TYPE
1	265255	244035	85 deg F	7 in. w.c. - 14 in. w.c.	Natural

FAN OPTIONS

FAN UNIT NO.	OPTION (Qty. - Descr)
1	1 - Inlet Pressure Gauge, 0-35'
	1 - Grease Box
	1 - AC Interlock Relay - 24VAC Coil
	1 - Full Crating For Commercial Heater
	1 - Low Fire Start
	1 - Manifold Pressure Gauge, -5 to 15' wc
	1 - Motorized Backdraft Damper for A2-D Housing
	1 - Separate 120V Wiring Package (Required for EMS or Prewire with VFD or BMS/Thermostat Control)
2	1 - Full Crating For Exhaust Fans
	1 - Fan Base Ceramic Seal - For Grease Ducts
	1 - I 15-BDD Damper

FAN ACCESSORIES

FAN UNIT NO.	FAN UNIT TAG	EXHAUST				SUPPLY			
		GREASE CUP	GRAVITY DAMPER	WALL MOUNT	SIDE DISCHARGE	GRAVITY DAMPER	MOTORIZED DAMPER	WALL MOUNT	
1		YES					YES		

CURB ASSEMBLIES

NO.	DN FAN	ITEM	SIZE
1	# 1	Curb	31.000"W x 123.875"L x 20.000/20.000"H Insulated Vented Hinged
	# 1	Rail	4.000"W x 4.000"L x 48.000"H Along Width,
2	# 2	Curb	19.500"W x 19.500"L x 22.000"H Vented Hinged

CUSTOMER APPROVAL TO MANUFACTURE:

Approved as Noted

Approved with ND Exception Taken

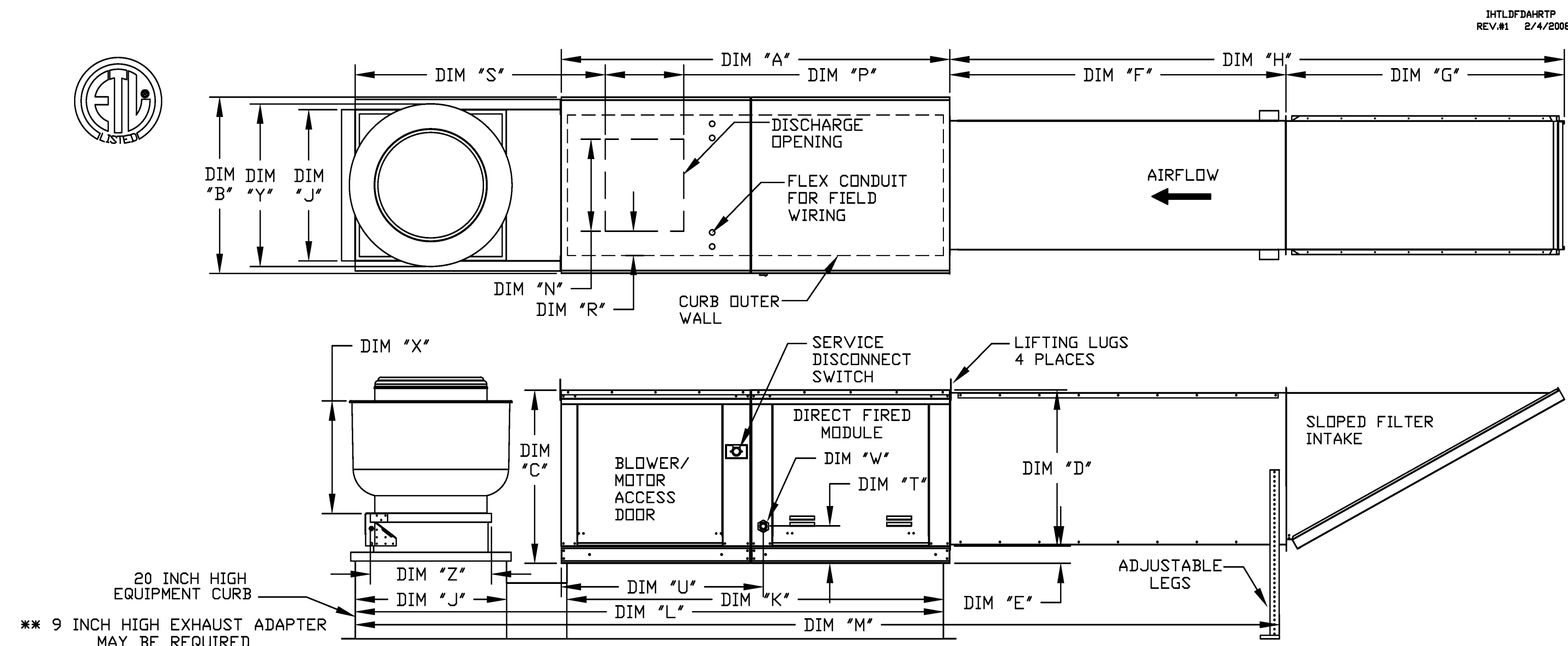
Revise and Resubmit

SIGNATURE _____

Your Title _____ Date _____

Modular Direct-Fired Heater (Fan #1 NRTP.B-A2-D.500-G15-NCA24HPFA)

- (Model#: TL-02MDF) TRUNKLINE - Extended Intake for size #2 Modular Heater. 24.75' Wide, 91.68' Long, 29.25' High. Includes intake hood with 2' EZ Kleen metal mesh filters, adjustable legs and 38' long extension.
- (Model#: NRTP.B-A2-D.500-G15-NCA24HPFA) Combination Unit with an Upblast Centrifugal High Pressure Exhaust Fan with a 24.75' Wheel and a #2 Modular Direct-Fired Make-Up Air Unit with a 15' Blower Wheel rated for a maximum of 500,000 BTUs.
- Down Discharge - Air Flow Right -> Left
- (Model#: CRB31X124X20/20INS) ROOF CURB - 31' Width, 123.875' Length, 20' Exhaust/Supply Height, Exhaust Opening 29', Supply Opening 79', Insulated

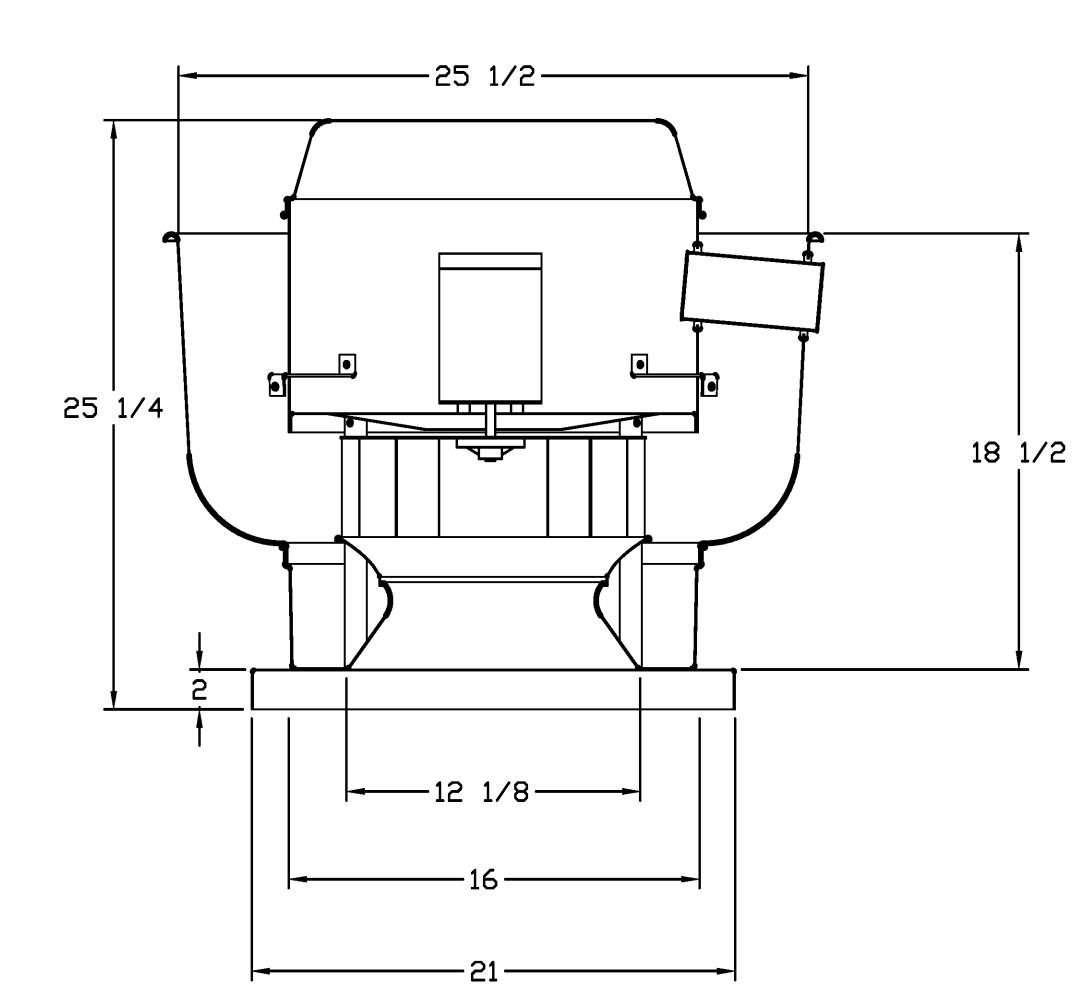


MODEL	WEIGHT	A	B	C	D	E	F	G	H	J	K	L	M	N	P	R	S	T	U
D.500-G15	920 LBS	82-3/8	37-3/8	36-3/4	33-1/16	3-3/4	38	53-5/8	91-5/8	31	79	124	162	18-3/4	16	6-1/8	35-13/16	7-13/16	42-13/16

EXHAUST UNIT DIMENSIONS				UNIT INFORMATION				CURB/RAIL				DISCHARGE OPENING				
MODEL #	X	Y	Z **	BTU RANGE (MBH)	GAS PRESSURE	GAS CONNECTION	FILTERS	MODEL	BURNER LENGTH	BTU LOW	BTU HIGH	MIN	MAX	"W" (NPT)	FILTER SIZE & QTY	MAX FILTER VELOCITY
NCA24FA	30-5/8	43-3/8	33	18	550	7" WC 14" WC	20"x25"x2" (3)	D.500-G15	12"	18	550	7" WC	14" WC	1	20"x25"x2" (3)	86000 CFM = 636 FPM

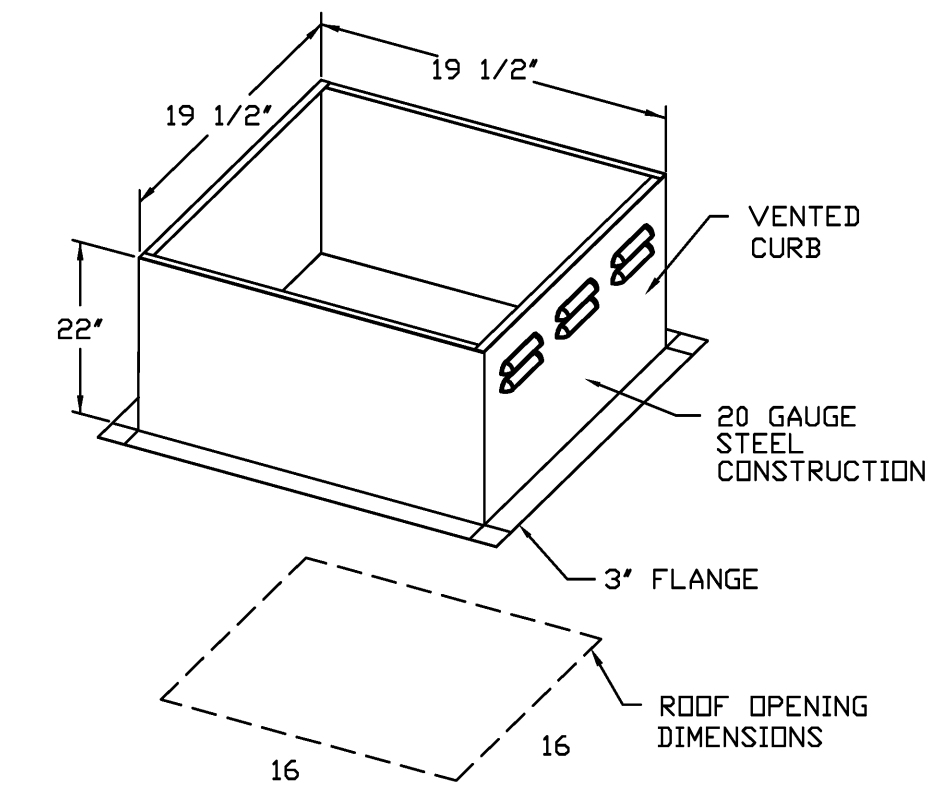
ROOF OPENING 2" SMALLER THAN CURB DIMENSION

FAN #2 DU33HFA - EXHAUST FAN



- FEATURES:**
- ROOF MOUNTED FANS
 - UL705
 - VARIABLE SPEED CONTROL
 - INTERNAL WIRING
 - WEATHERPROOF DISCONNECT
 - THERMAL OVERLOAD PROTECTION (SINGLE PHASE)

- OPTIONS:**
- FULL CRATING FOR EXHAUST FANS
 - FAN BASE CERAMIC SEAL - FOR GREASE DUCTS
 - I 15-BDD DAMPER



REVISIONS	
DESCRIPTION	DATE



124 Ohio Hill Road, Fairfield, ME 04937 PHONE: (207) 238-9213 FAX: (207) 238-9238 EMAIL: reg21@captiveair.com www.captiveair.com

Bowl Portland
Yarmouth, ME

DATE: 11/18/2009

DWG.#:
Fan-5-1054233

DRAWN BY:

SCALE:
Not To Scale

FAN

SHEET NO.
5