

REVISIONS	
DESCRIPTION	DATE



124 Ohio Hill Road, Fairfield, ME 04837 PHONE: (207) 238-9213 FAX: (207) 238-9238 EMAIL: req21@captiveair.com

Bowl Portland
Yarmouth, ME

DATE: 11/18/2009

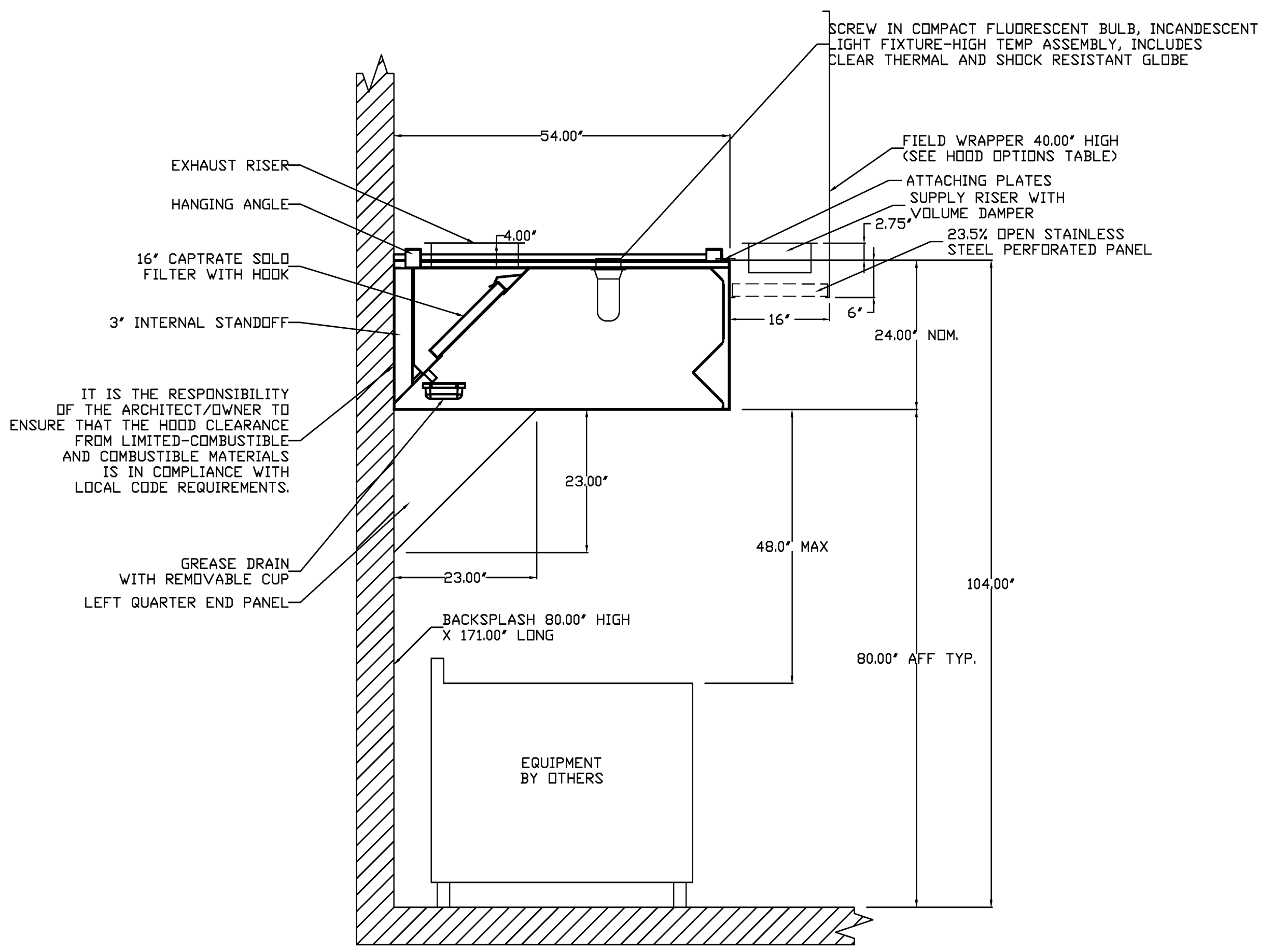
DWG.#:
Hood-2-1054233

DRAWN BY:

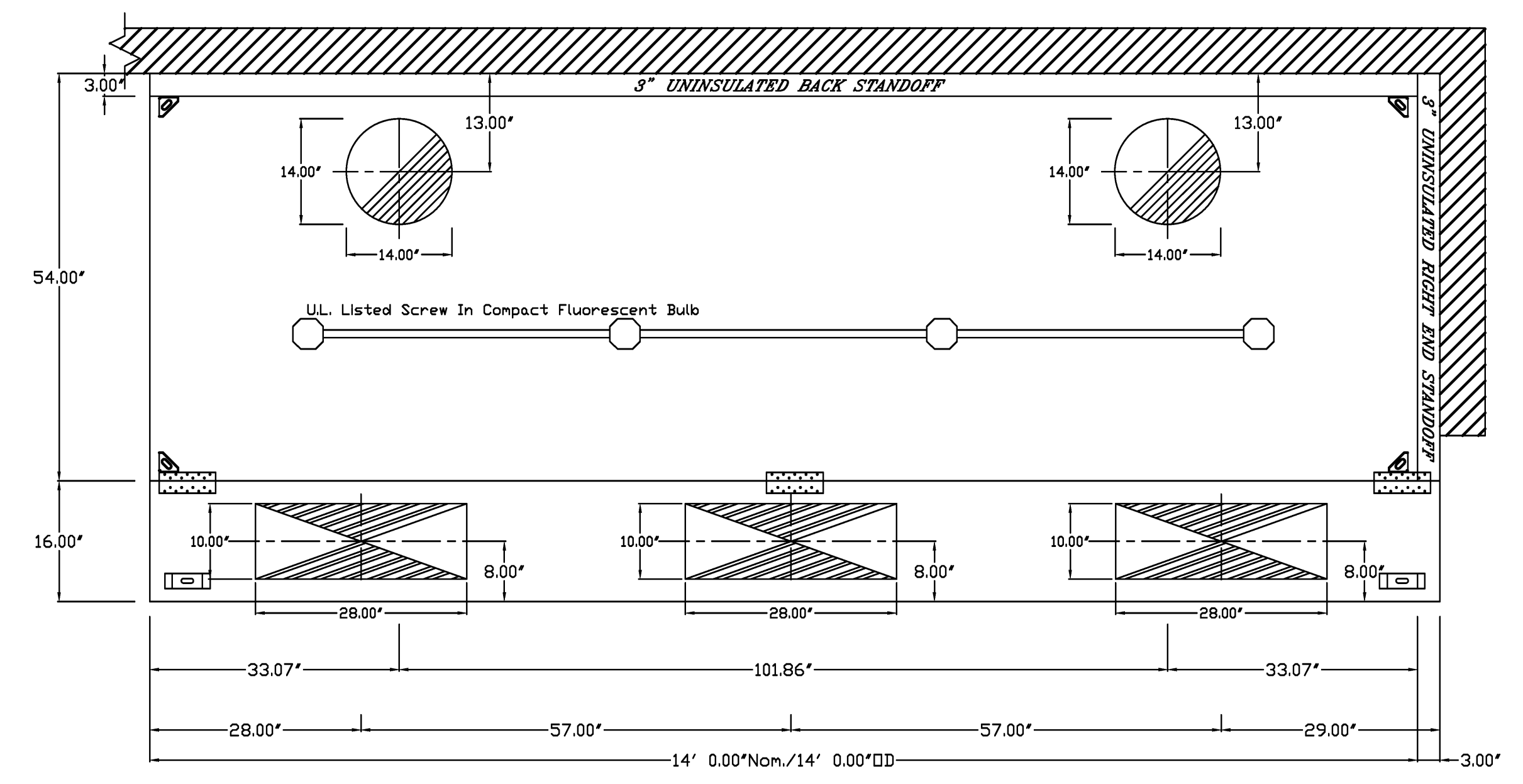
SCALE:
Not To Scale

HOOD

SHEET NO.
2



SECTION VIEW - MODEL 5424ND-2-PSP-F
HOOD - #1



PLAN VIEW - Hood #1 (Grease)
14' 0.00" LONG 5424ND-2-PSP-E
NOTE: Additional hanging angles provided for hoods longer than 12 ft.

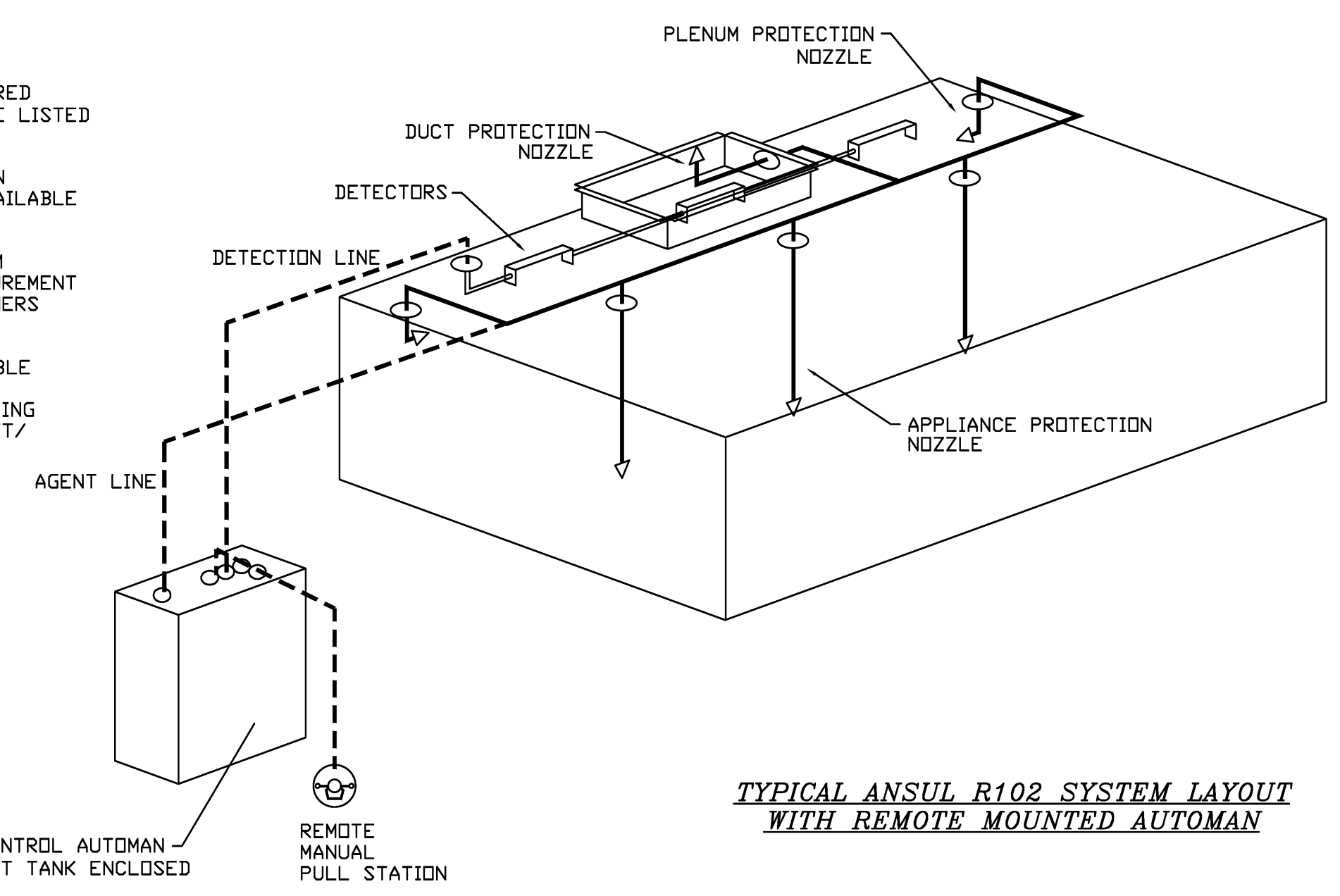
SPECIFICATIONS

THE RESTAURANT FIRE SUPPRESSION SYSTEM SHALL BE THE PRE-ENGINEERED TYPE WITH A FIXED NOZZLE AGENT DISTRIBUTION NETWORK. IT SHALL BE LISTED WITH UNDERWRITERS LABORATORIES, INC. (UL)

THE SYSTEM SHALL BE CAPABLE OF AUTOMATIC DETECTION AND ACTUATION WITH LOCAL OR REMOTE MANUAL ACTUATION. ACCESSORIES SHALL BE AVAILABLE FOR MECHANICAL OR ELECTRICAL GAS LINE SHUT-OFF APPLICATIONS.

THE EXTINGUISHING AGENT SHALL BE A POTASSIUM CARBONATE, POTASSIUM ACETATE-BASED FORMULATION DESIGNED FOR FLAME KNOCKDOWN AND SECUREMENT OF GREASE RELATED FIRES. IT SHALL BE AVAILABLE IN PLASTIC CONTAINERS WITH INSTRUCTIONS FOR LIQUID AGENT HANDLING AND USAGE.

THE REGULATED RELEASE MECHANISM SHALL BE COMPATIBLE WITH A FUSIBLE LINK DETECTION SYSTEM. THE FUSIBLE LINK SHALL BE SELECTED AND INSTALLED ACCORDING TO THE OPERATING TEMPERATURE IN THE VENTILATING SYSTEM. THE FUSIBLE LINK SHALL BE SUPPORTED BY A DETECTOR BRACKET/LINKAGE ASSEMBLY.



TYPICAL ANSUL R102 SYSTEM LAYOUT
WITH REMOTE MOUNTED AUTOMAN

CUSTOMER APPROVAL TO MANUFACTURE:

Approved as Noted

Approved with NO Exception Taken

Revise and Resubmit

SIGNATURE _____

Your Title _____ Date _____