

Consultants

Casco Bay Engineering
Structural Engineer

Casco Bay Engineering
Civil Engineer

TJM Consulting
Food Service

Urban Dwellings
Interior Design

Revisions

.

Bowl Portland
58 Alder Street Portland, Maine

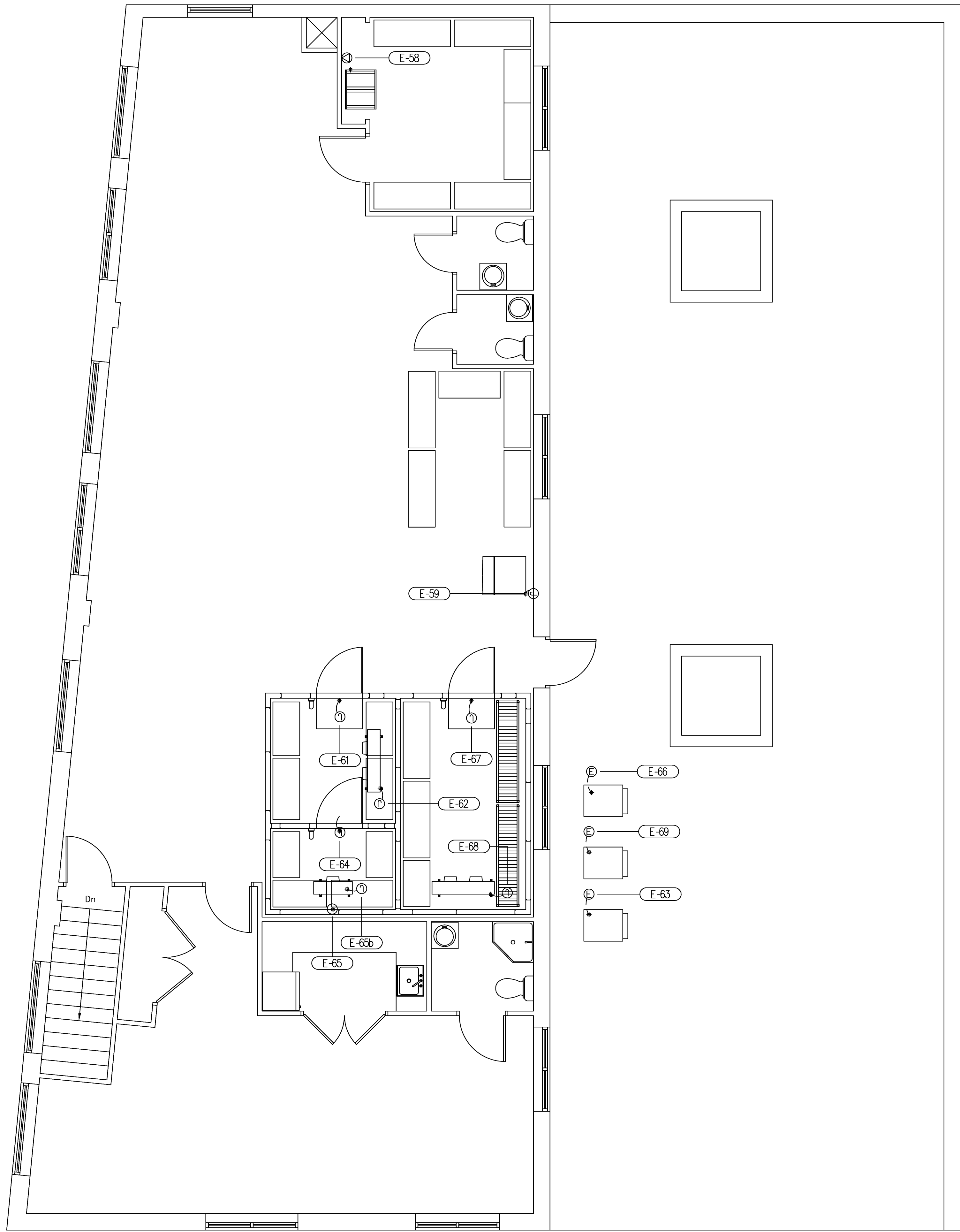
Job Number: 09.017

Date: 13.Nov.09

Drawing Title:

**FOODSERVICE
EQUIPMENT
ELECTRICAL
ROUGH-IN PLAN**

FS-3B



LEGEND – ELECTRICAL CONNECTIONS

- ⊕ DUPLEX RECEPT., 20-AMP, 120-VOLT, GROUND TYPE, HORIZONTAL MOUNT
- ⊖ SIMPLEX RECEPT., 20-AMP, 120-VOLT, GROUND TYPE, HORIZONTAL MOUNT
- ⊙ SPECIAL PURPOSE OUTLET, 120-VOLT, GROUND TYPE, HORIZONTAL MOUNT
- ⦿ SPECIAL PURPOSE OUTLET, 208/240-VOLT AS INDICATED, GROUND TYPE, HORIZONTAL MOUNT
- Ⓜ JUNCTION BOX
- Ⓧ ELECTRICAL CONDUIT, STUB AS INDICATED FOR DIRECT CONNECTION
- ⦿ FLOOR/CEILING RECEPTACLE AS INDICATED
- IG ISOLATED GROUND – FOR POS SYSTEM
- WP WATERPROOF COVER AT RECEPTACLE
- FIELD WIRING, EXPOSED RIGID WATERTIGHT CONDUIT
- - - FIELD WIRING, CONCEALED IN WALL, FLOOR, OR CEILING

