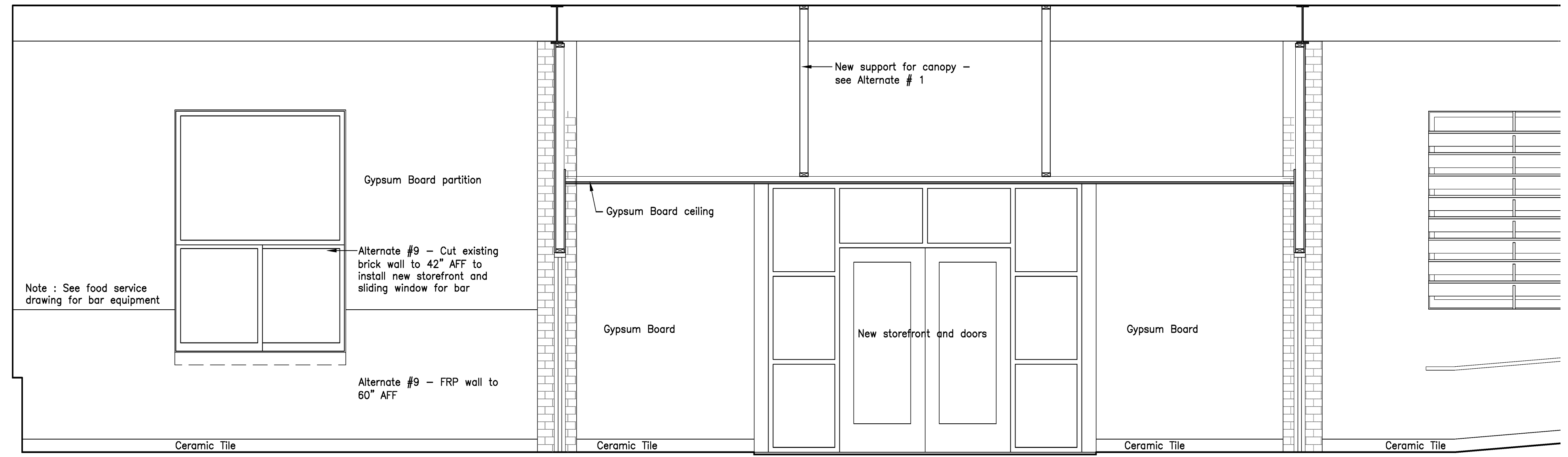
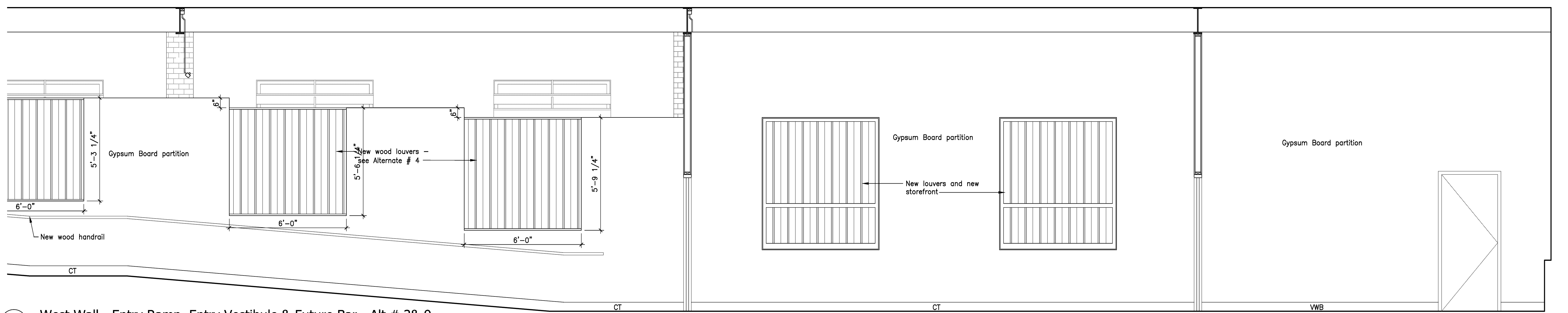


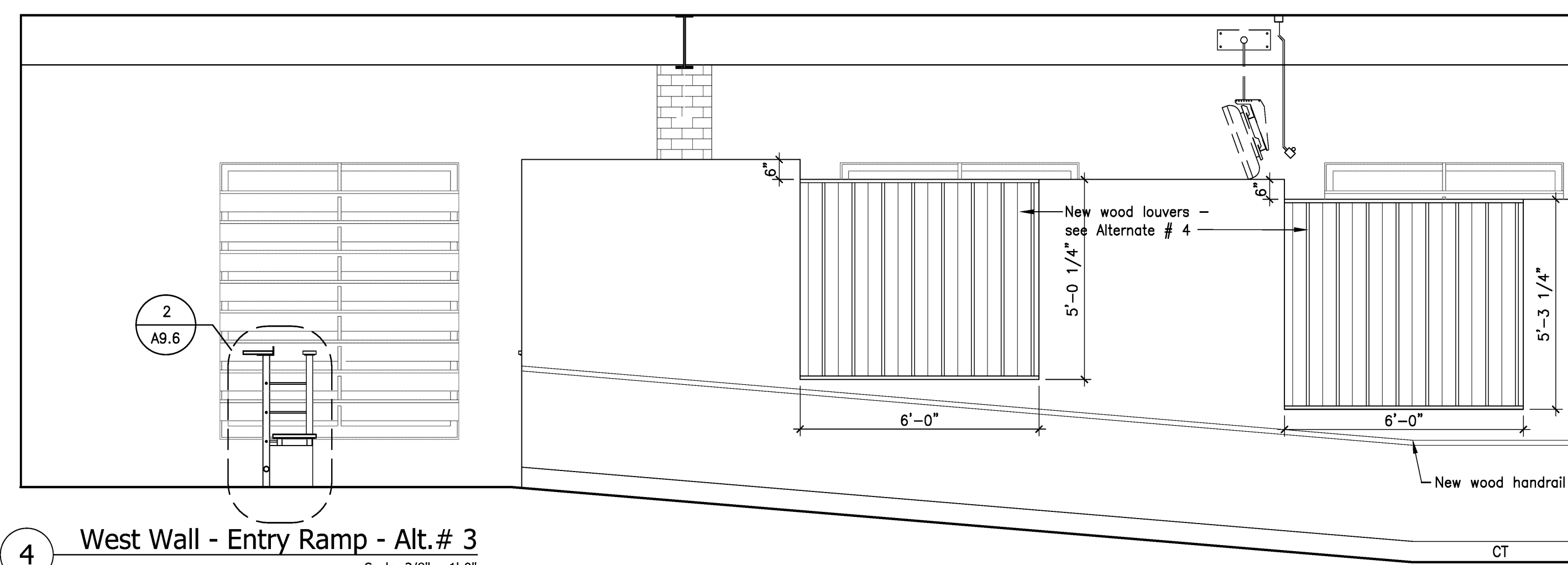
1 East Wall - Entry Ramp - Alt. # 4
 Scale: 3/8" = 1'-0"



2 East Wall - Entry Vestibule & Future Bar - Alt. # 1, 4 & 9
 Scale: 3/8" = 1'-0"



3 West Wall - Entry Ramp, Entry Vestibule & Future Bar - Alt. # 3 & 9
 Scale: 3/8" = 1'-0"



4 West Wall - Entry Ramp - Alt. # 3
 Scale: 3/8" = 1'-0"