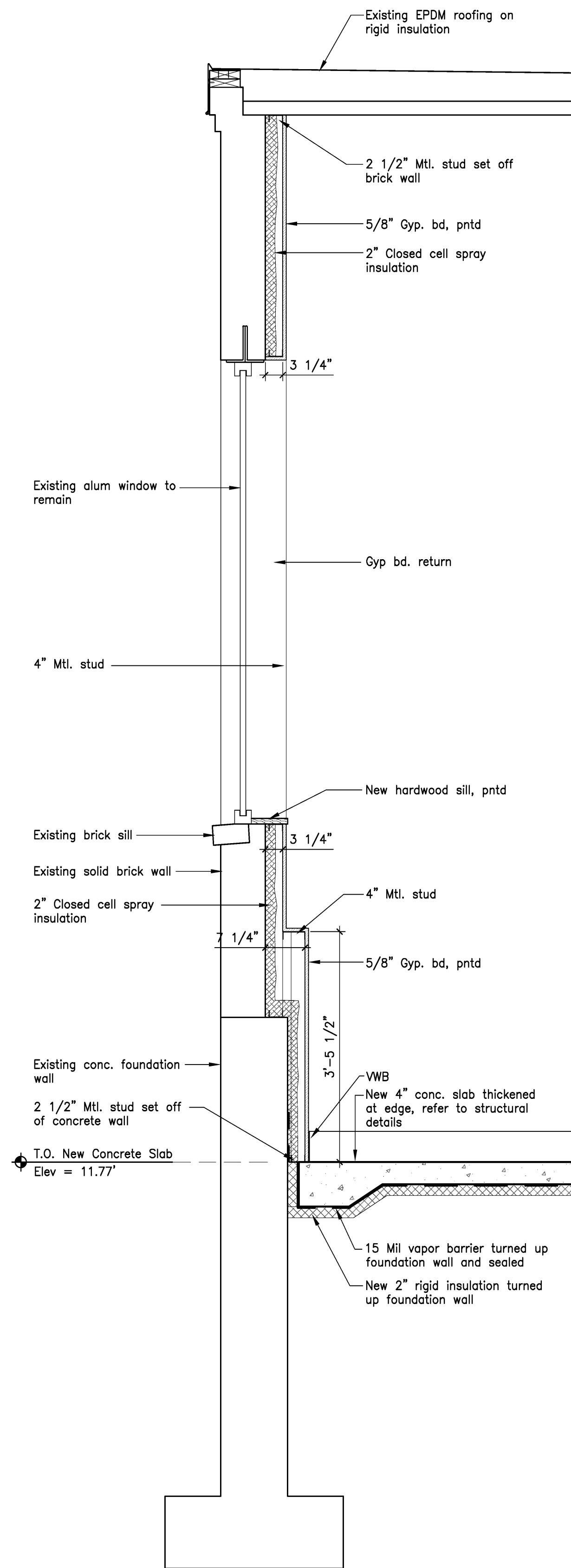
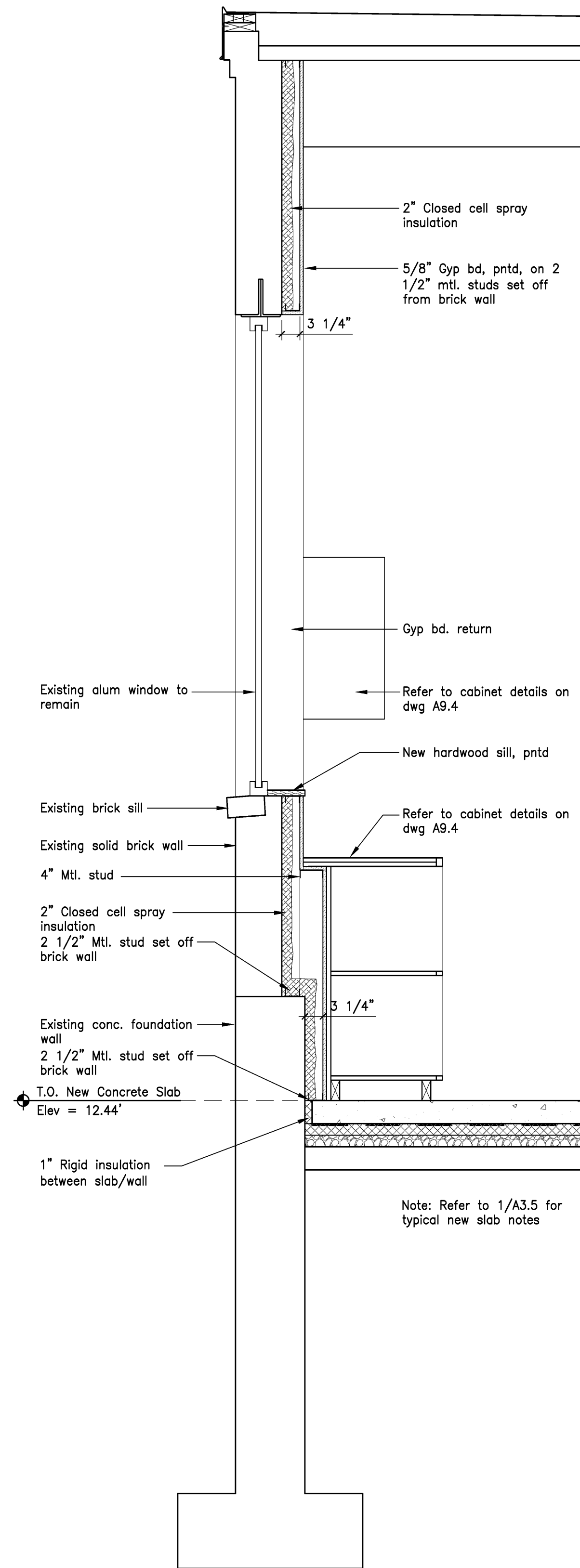


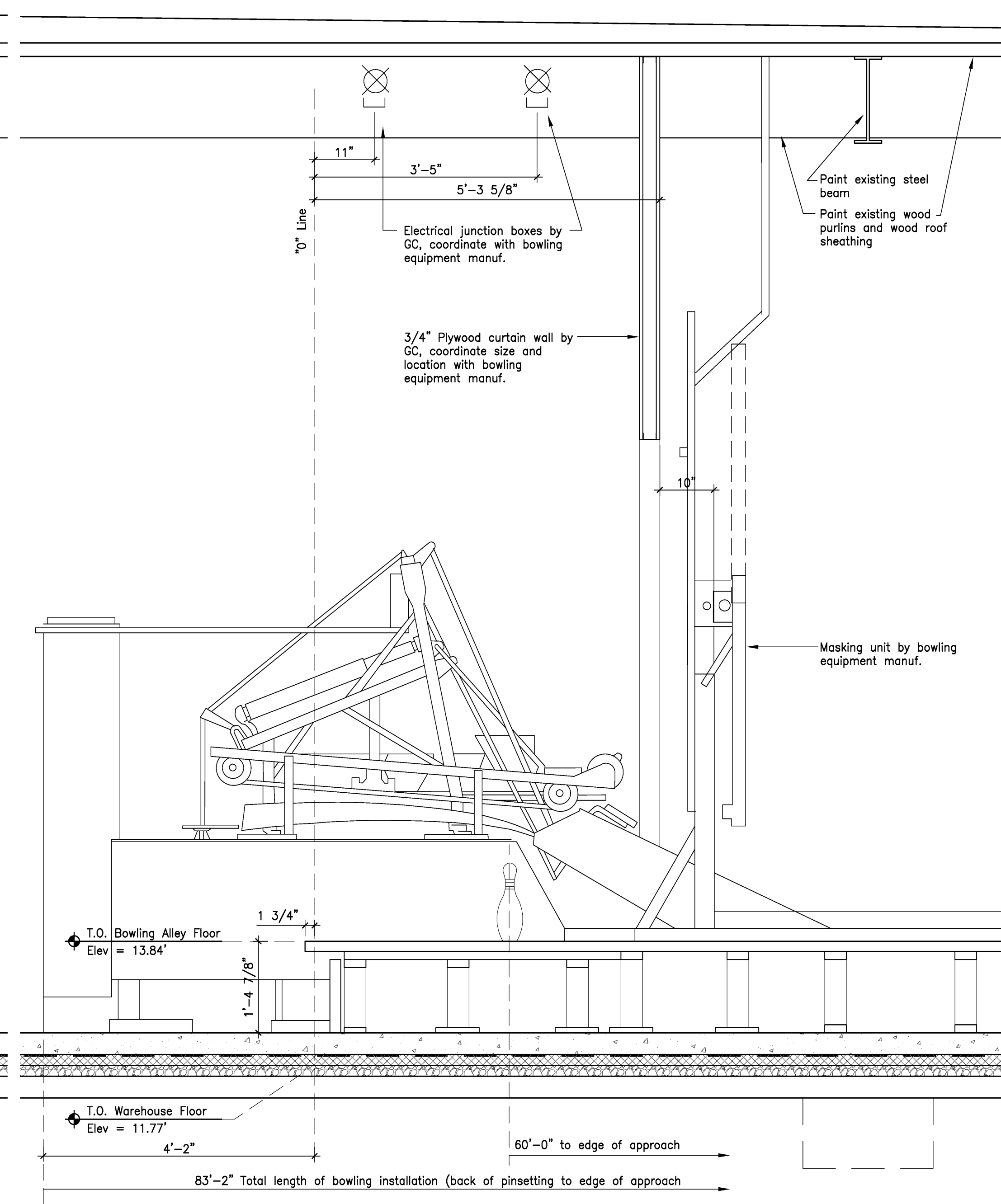
8 Wall Section (New Brick Opening)
 Scale: 3/4" = 1'-0"



7 Wall Section / Future Bar
 Scale: 3/4" = 1'-0"



6 Wall Section / Mechanics Area
 Scale: 3/4" = 1'-0"



5 Pin Setting / Masking Unit
 Scale: 3/4" = 1'-0"

Note: Refer to 1/A3.5 for typical new slab notes