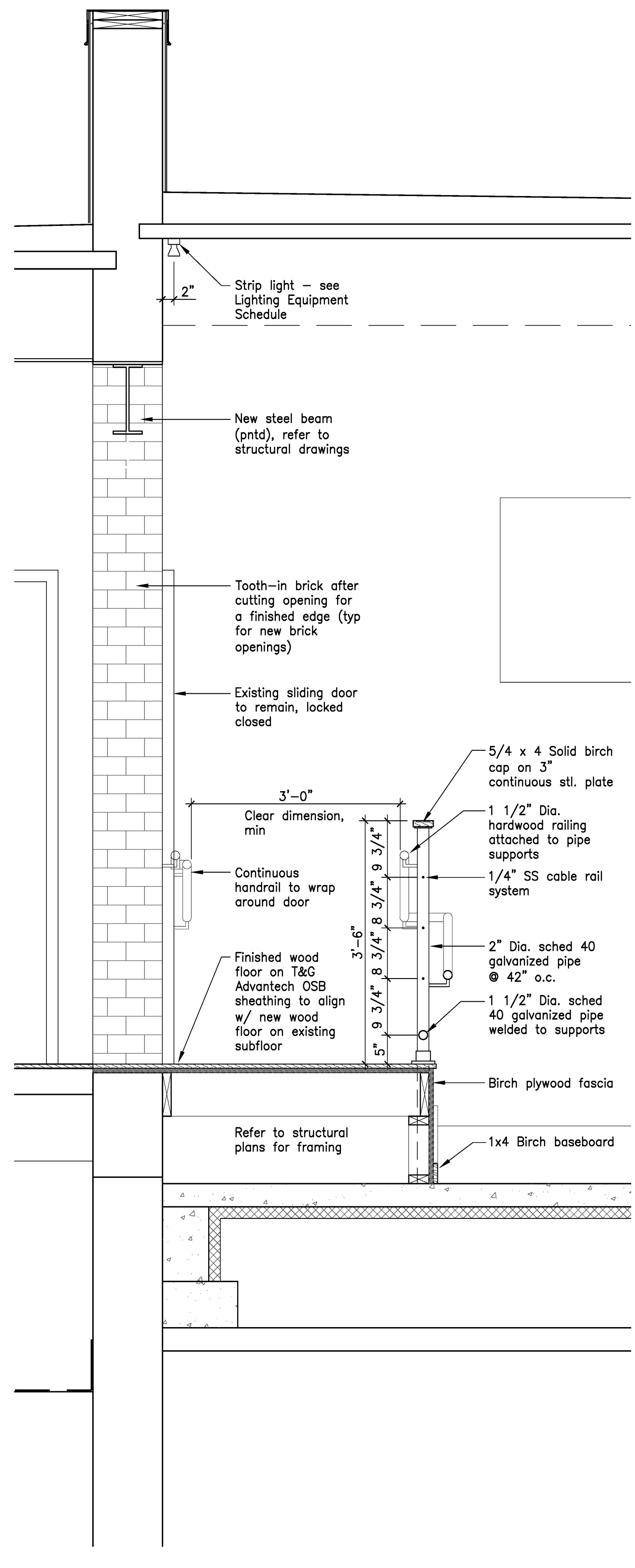
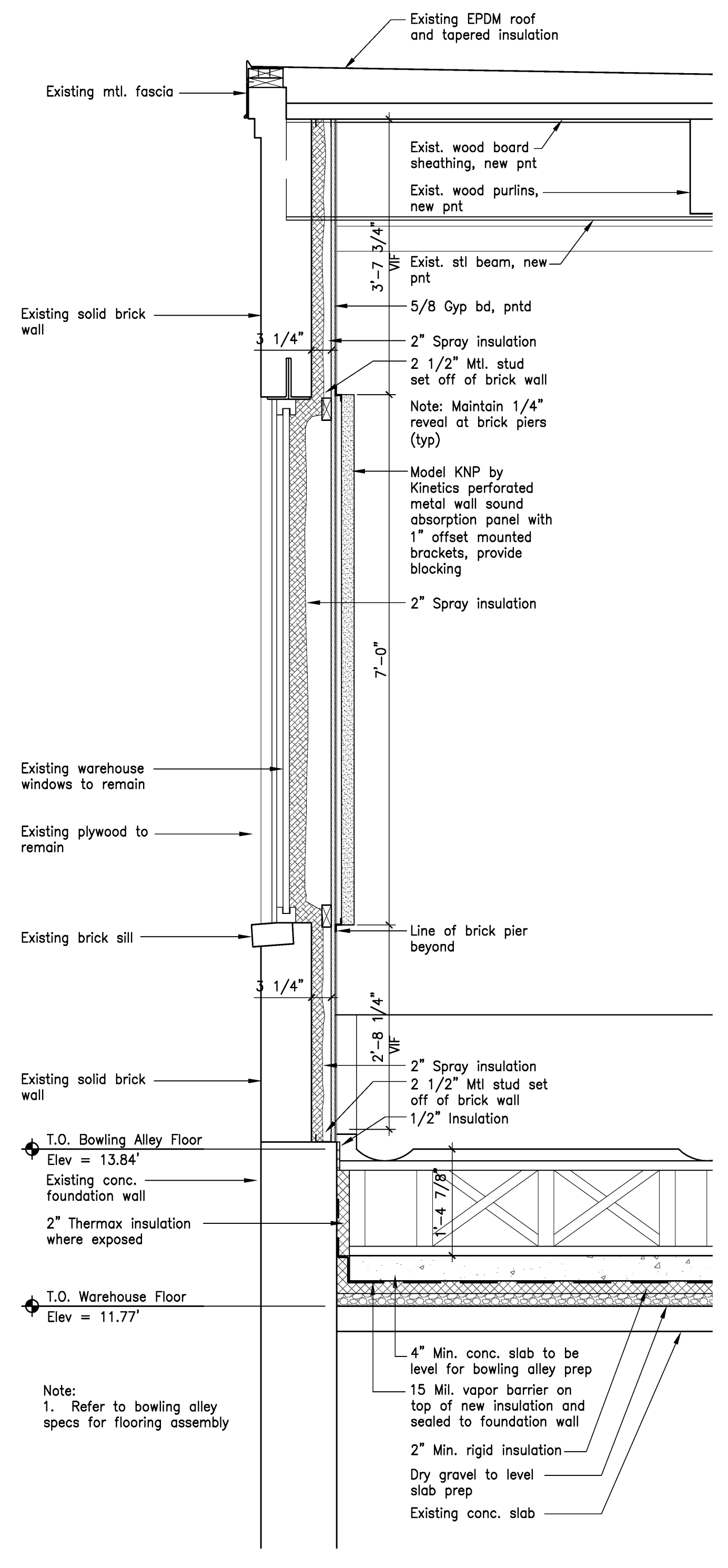


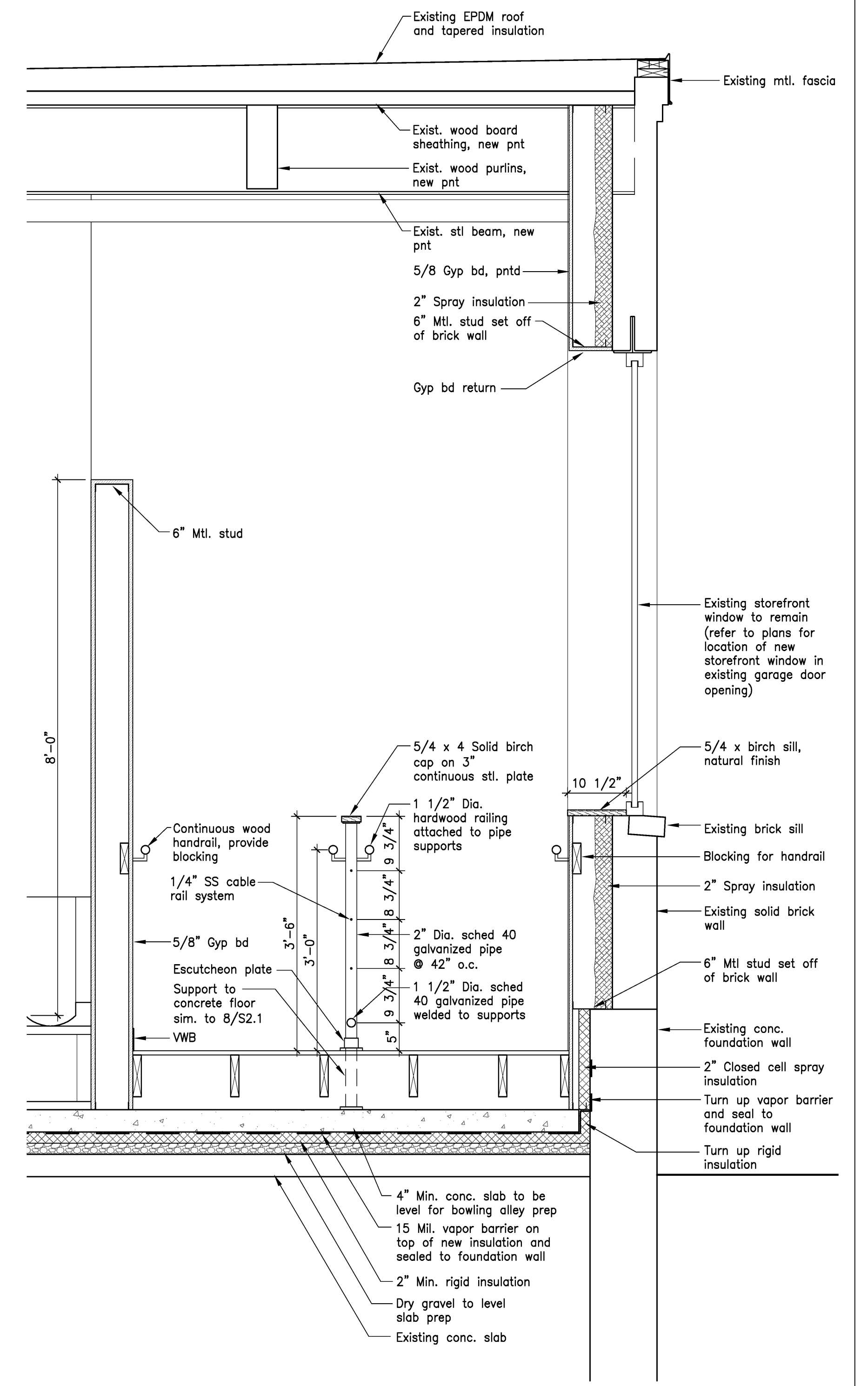
4 Wall Section at Stage
Scale: 3/4" = 1'-0"



3 Brick Opening / Ramp Platform
Scale: 3/4" = 1'-0"



2 Wall Section (Bowling Alley Window)
Scale: 3/4" = 1'-0"



1 Wall Section (Bowling Alley / Ramp)
Scale: 3/4" = 1'-0"