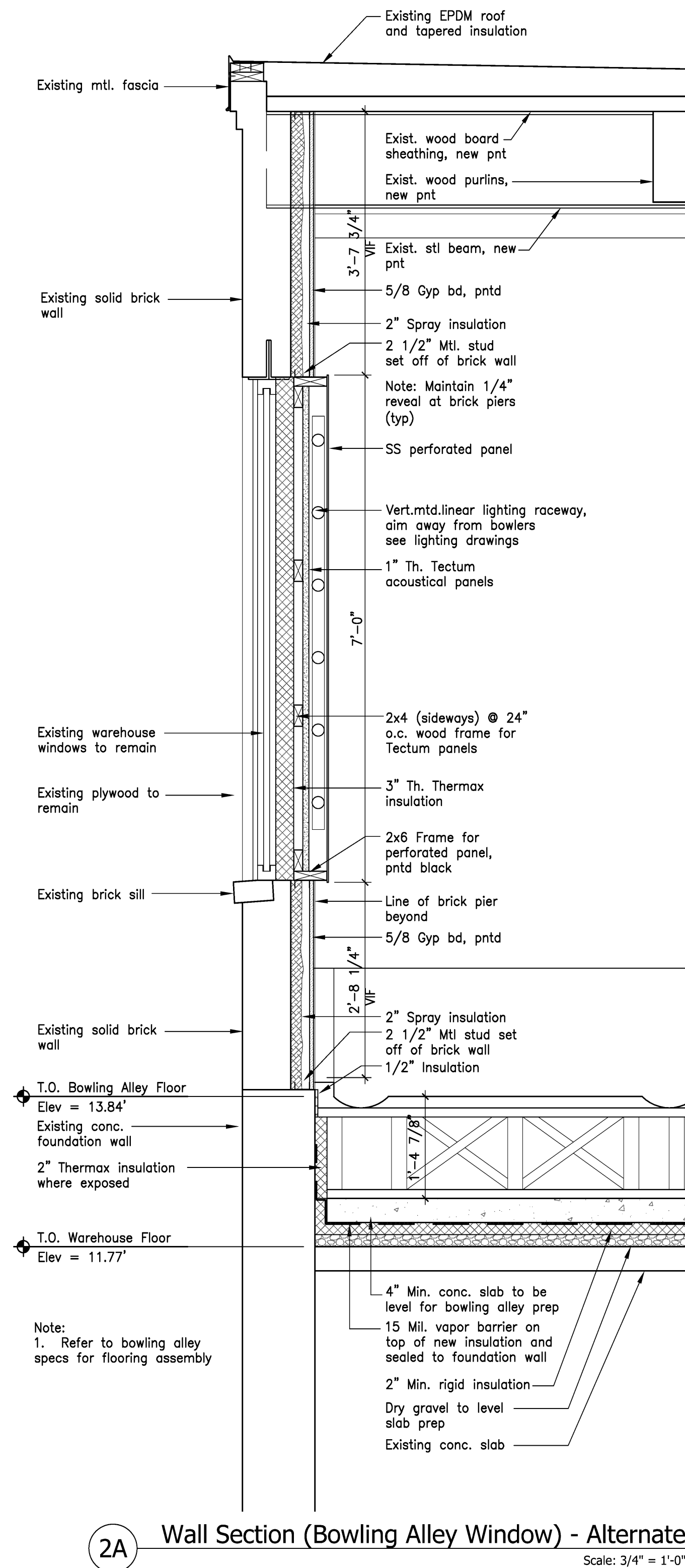
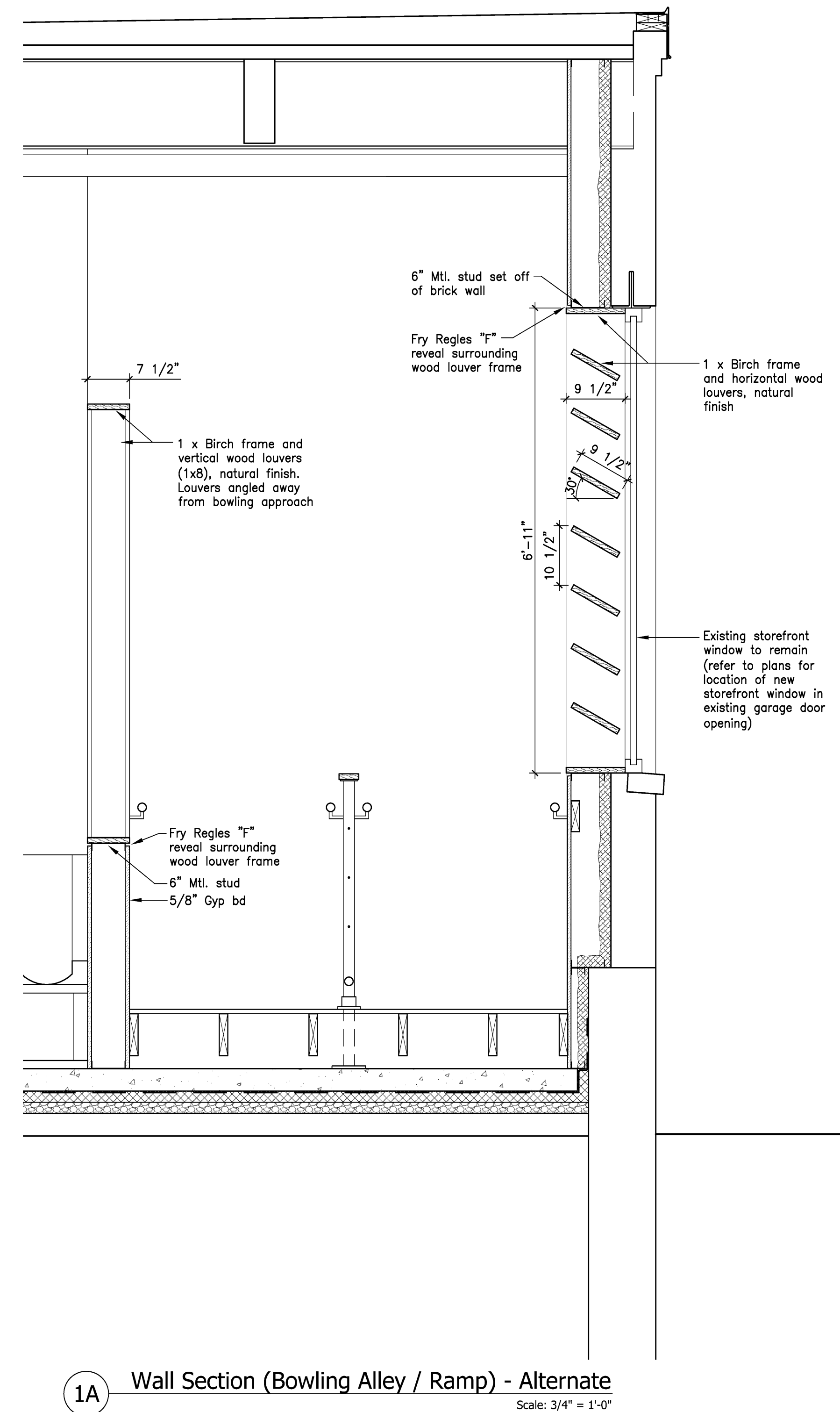


4A Wall Section at Stage
Scale: 3/4" = 1'-0"



2A Wall Section (Bowling Alley Window) - Alternate
Scale: 3/4" = 1'-0"

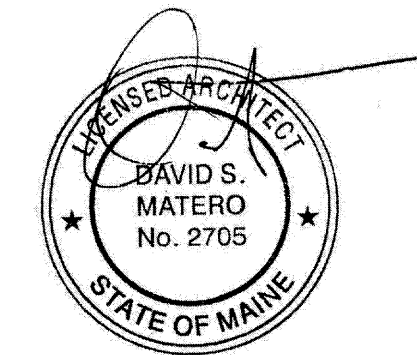


1A Wall Section (Bowling Alley / Ramp) - Alternate
Scale: 3/4" = 1'-0"

- Consultants**
 Casco Bay Engineering
Structural Engineer
 Casco Bay Engineering
Civil Engineer
 TJM Consulting
Food Service
 Urban Dwellings
Interior Design

Revisions

Bowl Portland
58 Alder Street Portland, Maine



Job Number: 09.017
Date: 07.Dec.09
Scale: 3/4" = 1'-0"

Wall Sections Alternates

A3.5A
Issue for Bid