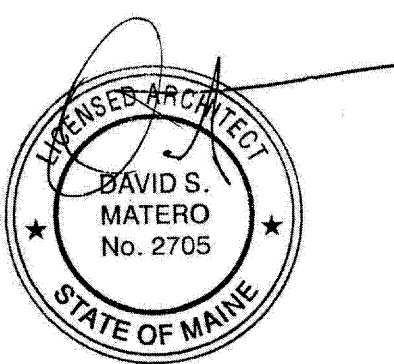


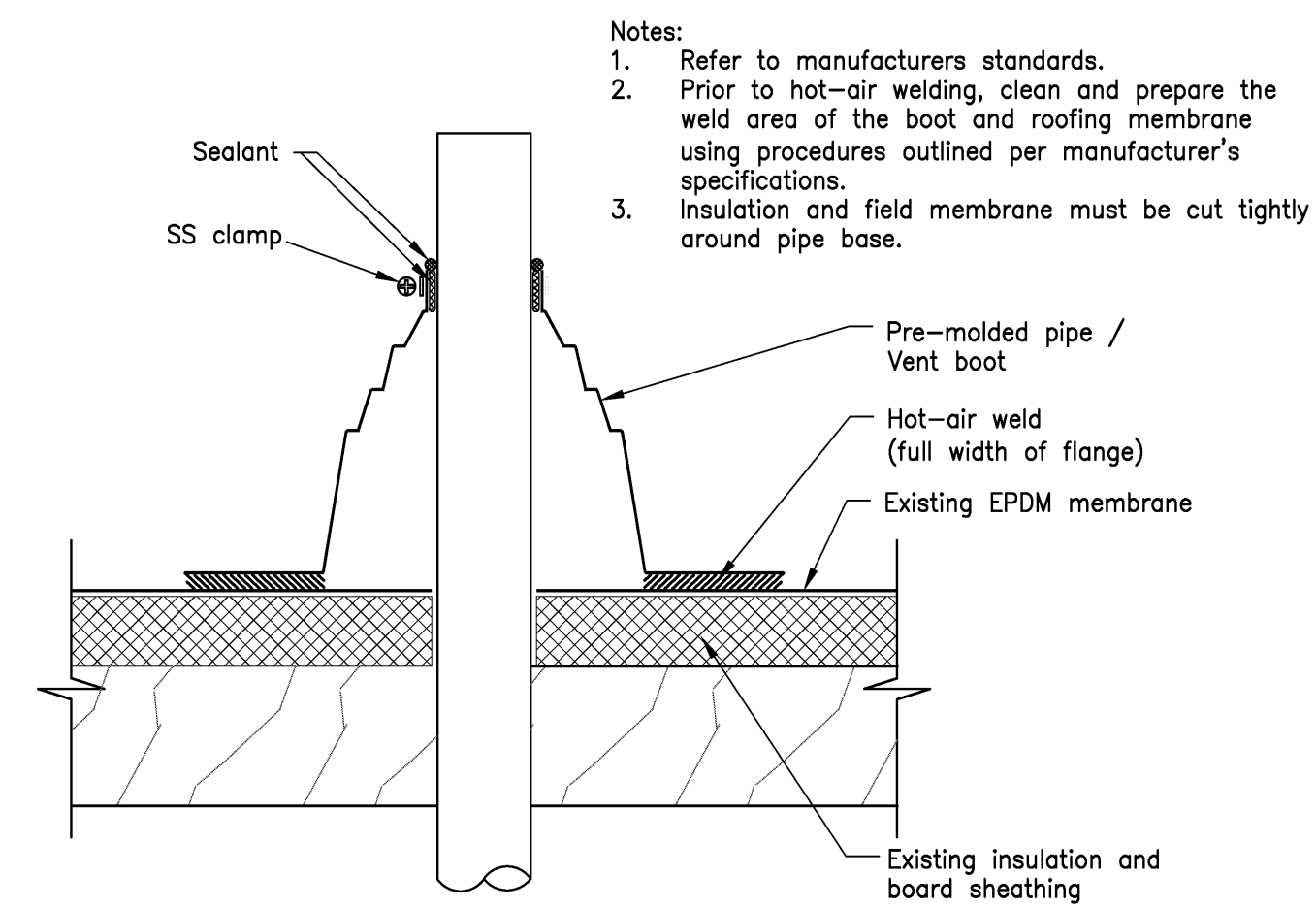
- Consultants**
- Casco Bay Engineering
Structural Engineer
 - Casco Bay Engineering
Civil Engineer
 - TJM Consulting
Food Service
 - Urban Dwellings
Interior Design
- Revisions**

Bowl Portland
 58 Alder Street Portland, Maine

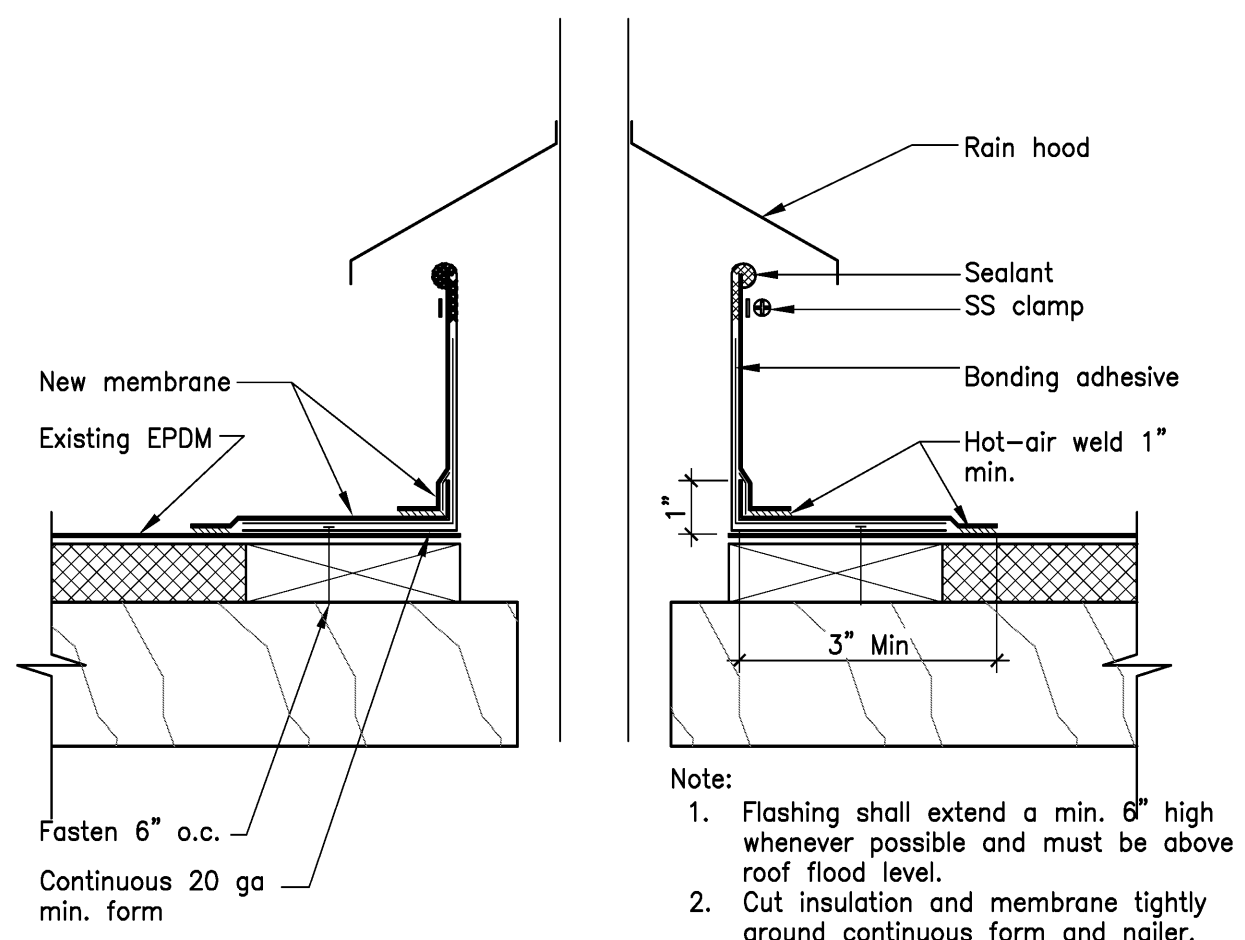


Job Number: 09.017
 Date: 07.Dec.09
 Scale: 1/8" = 1'-0"
 Drawing Title:
Proposed Floor Plans & Roof Details
Base Bid

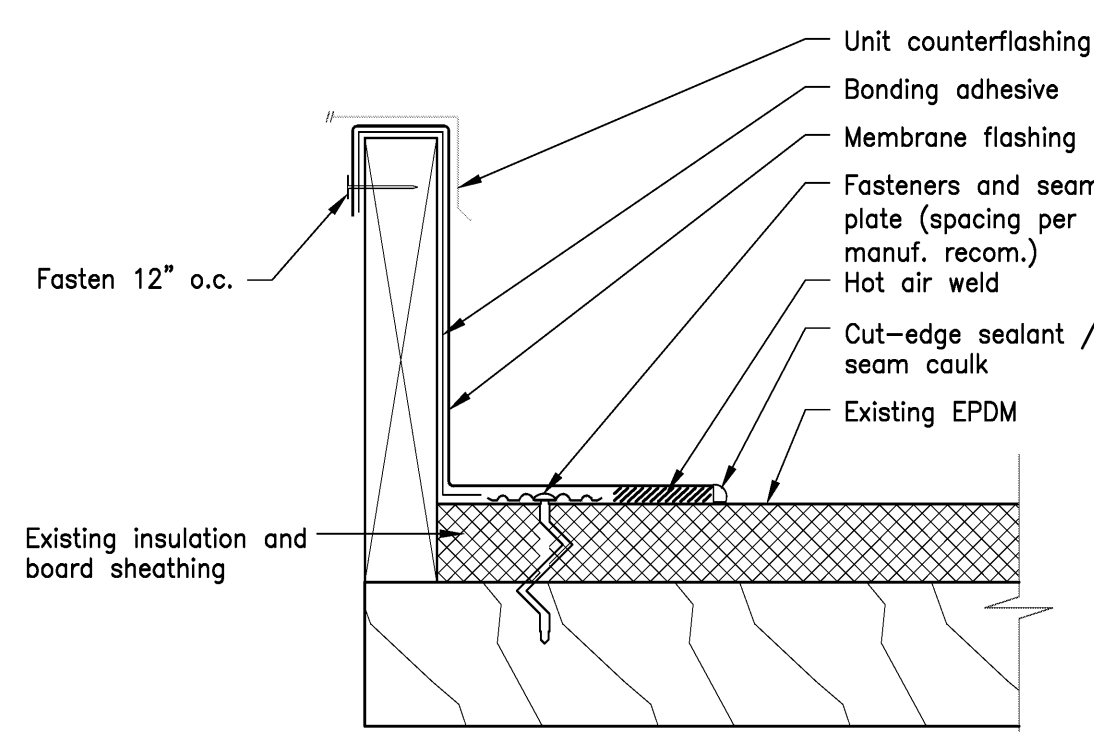
A1.1
 Issue for Bid



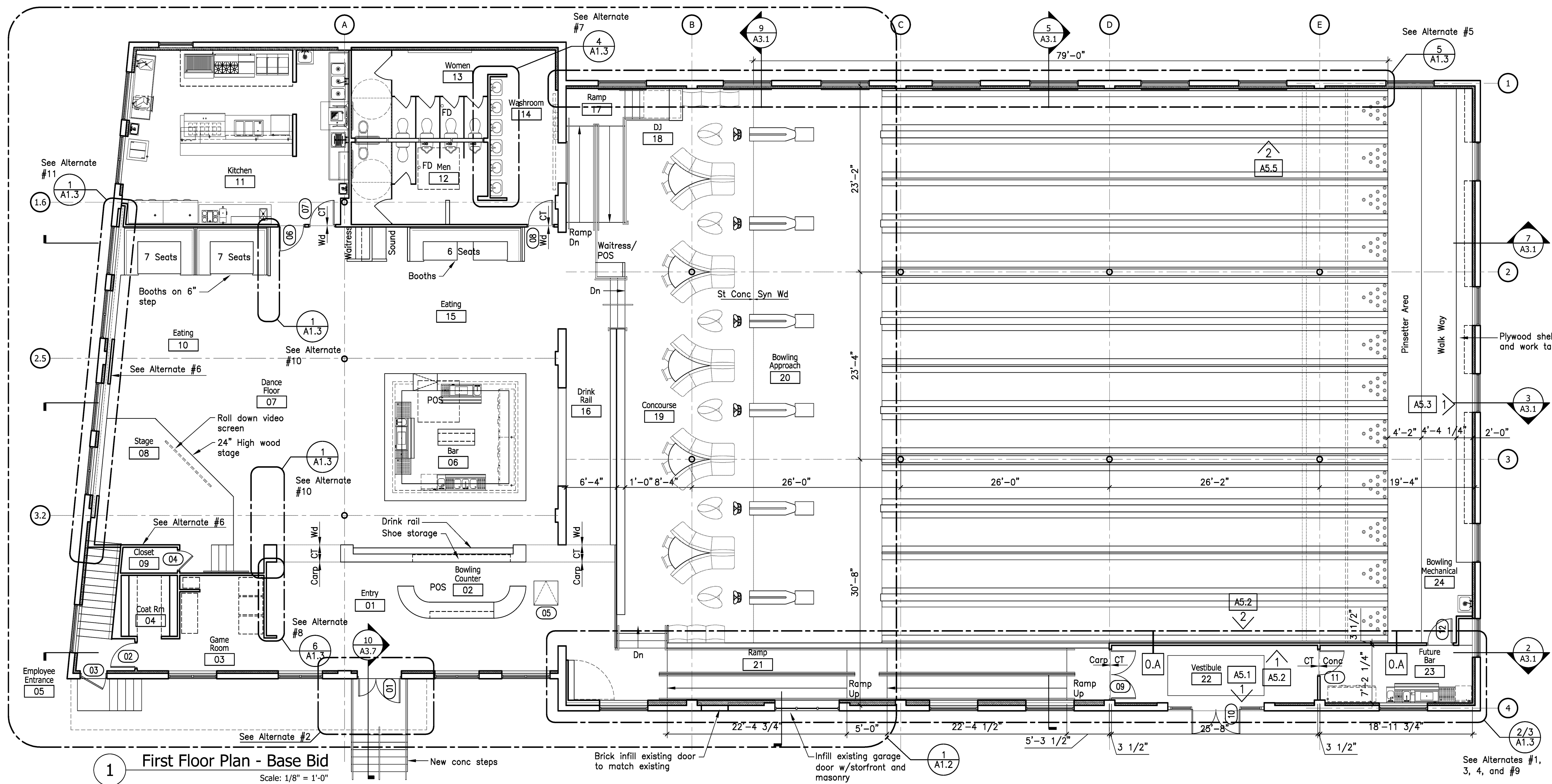
3 Typical Pre-molded Vent Pipe Flashing
 Scale: 3" = 1'-0"



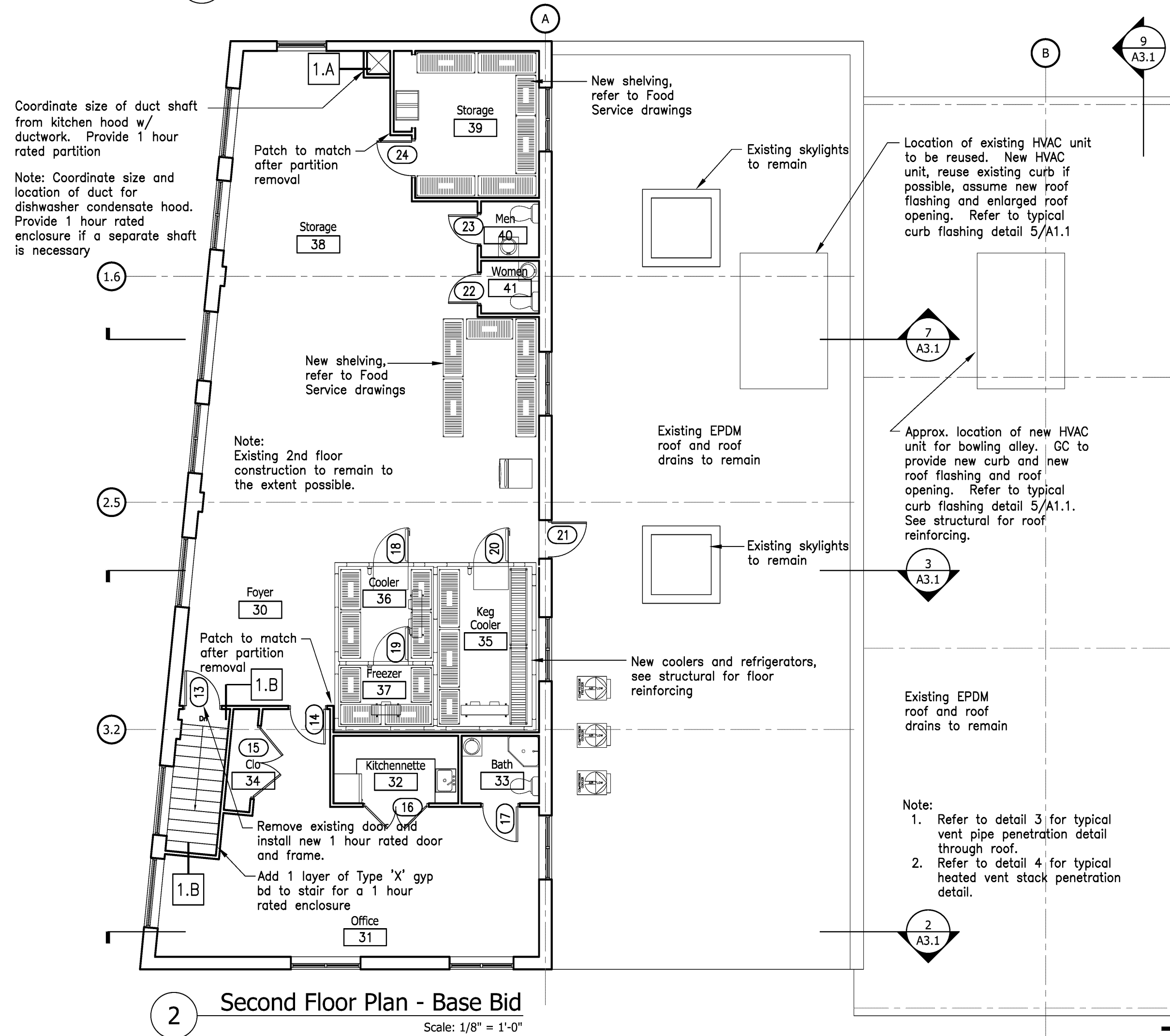
4 Typical Heated Vent Stack
 Scale: 3" = 1'-0"



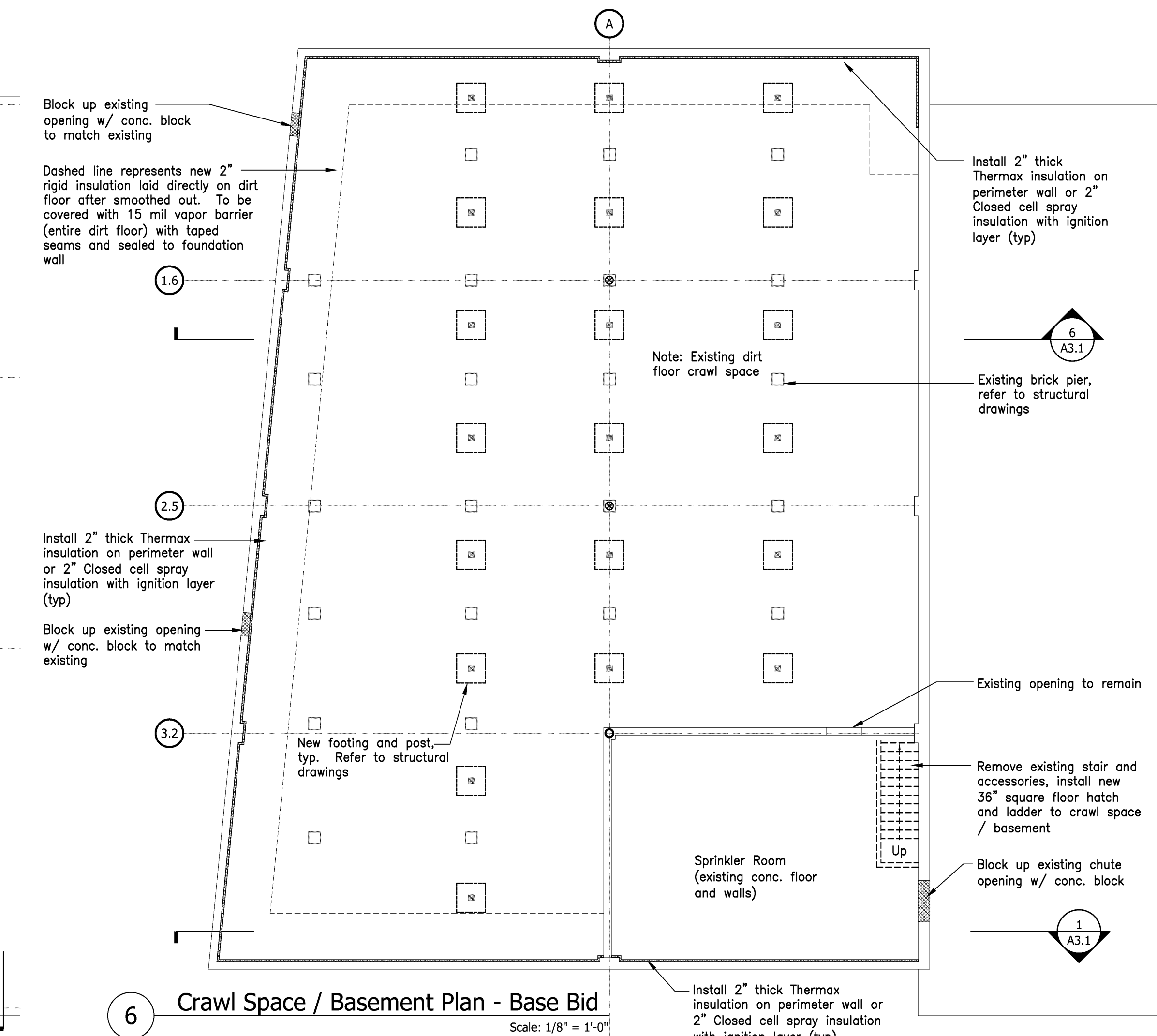
5 Typical Curb Detail
 Scale: 3" = 1'-0"



1 First Floor Plan - Base Bid
 Scale: 1/8" = 1'-0"



2 Second Floor Plan - Base Bid
 Scale: 1/8" = 1'-0"



6 Crawl Space / Basement Plan - Base Bid
 Scale: 1/8" = 1'-0"

- Notes:**
1. Refer to manufacturers standards.
 2. Prior to hot-air welding, clean and prepare the weld area of the boot and roofing membrane using procedures outlined per manufacturer's specifications.
 3. Insulation and field membrane must be cut tightly around pipe base.

- Note:**
1. Flashing shall extend a min. 6" high whenever possible and must be above roof flood level.
 2. Cut insulation and membrane tightly around continuous form and nailer.

- Note:**
1. Flashing shall extend a min. 6" high whenever possible and must be above roof flood level.

Coordinate size of duct shaft from kitchen hood w/ ductwork. Provide 1 hour rated partition

Note: Coordinate size and location of duct for dishwasher condensate hood. Provide 1 hour rated enclosure if a separate shaft is necessary

Note: Existing 2nd floor construction to remain to the extent possible.

Note:

1. Refer to detail 3 for typical vent pipe penetration detail through roof.
2. Refer to detail 4 for typical heated vent stack penetration detail.

New shelving, refer to Food Service drawings

New shelving, refer to Food Service drawings

New coolers and refrigerators, see structural for floor reinforcing

Location of existing HVAC unit to be reused. New HVAC unit, reuse existing curb if possible, assume new roof flashing and enlarged roof opening. Refer to typical curb flashing detail 5/A1.1

Approx. location of new HVAC unit for bowling alley. GC to provide new curb and new roof flashing and roof opening. Refer to typical curb flashing detail 5/A1.1. See structural for roof reinforcing.

Note:

1. Refer to detail 3 for typical vent pipe penetration detail through roof.
2. Refer to detail 4 for typical heated vent stack penetration detail.

Block up existing opening w/ conc. block to match existing

Dashed line represents new 2" rigid insulation laid directly on dirt floor after smoothed out. To be covered with 15 mil vapor barrier (entire dirt floor) with taped seams and sealed to foundation wall

Install 2" thick Thermax insulation on perimeter wall or 2" Closed cell spray insulation with ignition layer (typ)

Block up existing opening w/ conc. block to match existing

Install 2" thick Thermax insulation on perimeter wall or 2" Closed cell spray insulation with ignition layer (typ)

Note: Existing dirt floor crawl space

Existing brick pier, refer to structural drawings

Remove existing stair and accessories, install new 36" square floor hatch and ladder to crawl space / basement

Block up existing chute opening w/ conc. block

Existing opening to remain

Sprinkler Room (existing conc. floor and walls)

Install 2" thick Thermax insulation on perimeter wall or 2" Closed cell spray insulation with ignition layer (typ)