

GENERAL NOTES

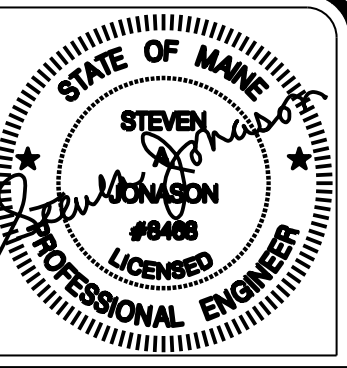
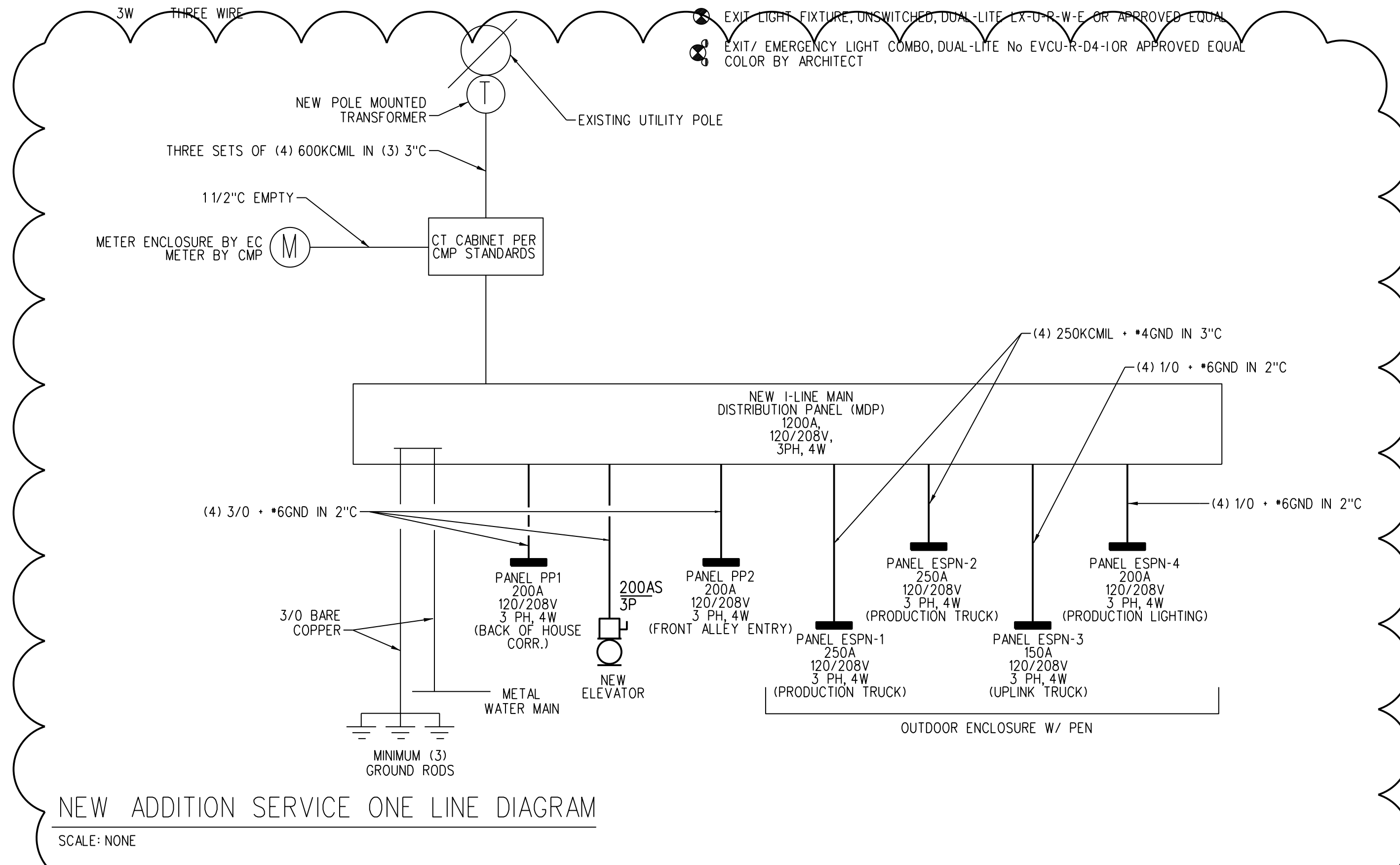
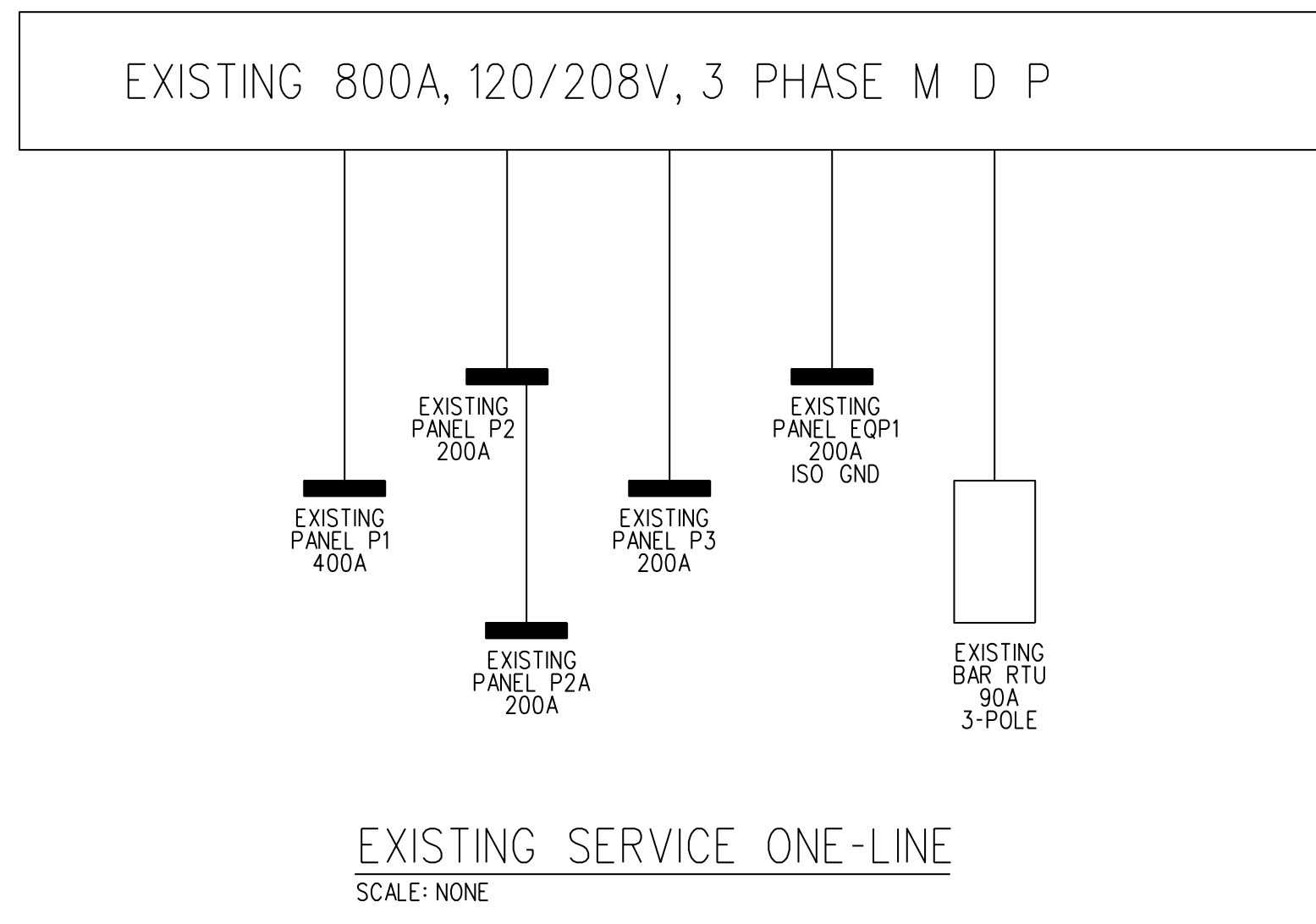
- NOT ALL SYMBOLS INDICATED IN THE LEGEND APPEAR ON THE DRAWINGS. COORDINATE WORK ACCORDINGLY. COMPLY WITH SPECIFICATIONS AND NOTES BELOW AS APPLICABLE.
- ALL RECEPTACLES SHALL BE INSTALLED 18" AFF TO CENTERLINE OF BOX UNLESS NOTED OTHERWISE.
- ALL WIRING SHALL BE COPPER UNLESS DESIGNATED AS "AL" UNLESS OTHERWISE NOTED. ALL WIRING SHALL BE #12 AWG AND #12 EQUIPMENT GROUNDING CONDUCTOR. HOMERUNS FED FROM A 20A-1P, 120V CIRCUIT IN EXCESS OF 70 SHALL BE #10 AWG.
- CONNECT BATTERY BACKED EMERGENCY AND EXIT LIGHTING TO NEAREST LIGHTING CIRCUIT AHEAD OF ANY SWITCHING. CONNECT REMOTE HEADS WITH #10 AWG COPPER CONDUCTORS. AC EXIT FIXTURES SHALL BE CONNECTED TO NEAREST EMERGENCY CIRCUIT OR AS INDICATED.
- TEST ALL EMERGENCY LIGHTING UNITS FOR PROPER OPERATION OF LAMPS AND BATTERIES.
- SEE MECHANICAL PLAN FOR HVAC UNITS, PUMPS AND FANS CONTROLLED BY THERMOSTATS (PROVIDED BY ATC CONTRACTOR).
- FUSES AND OVERLOAD UNITS FOR MOTORS SHALL BE SIZED BASED ON ACTUAL MOTOR NAMEPLATE DATA AND IN ACCORDANCE WITH NEC. CIRCUIT BREAKERS FOR MOTORS ARE SUPPLIED AT MAX VALUE PER NEC (2.5 x FLA). SIZE IN THE FIELD IN ACCORDANCE WITH MFR RECOMMENDATION.
- ALL WORK SHALL COMPLY WITH NFPA70, NFPA72, NFPA101 & ALL FEDERAL, STATE & LOCAL REGULATIONS.
- ALL PENETRATIONS THROUGH FLOORS, RATED WALLS AND PARTITIONS SHALL BE SEALED WITH UL APPROVED FIRE SEALANT MATERIAL TO MAINTAIN FIRE RATING FOR THE SEPARATION.
- ALL ENCLOSURES, CONDUIT BODIES AND THEIR COVERS CONTAINING FIRE ALARM SYSTEM CONDUCTORS SHALL BE PAINTED RED.
- AN EQUIPMENT GROUNDING CONDUCTOR SHALL BE INSTALLED WITH ALL FEEDERS AND BRANCH CIRCUITS. SIZE IN ACCORDANCE WITH NFPA 70 ARTICLE 250.
- COORDINATE INSTALLATION OF VOICE/DATA OUTLETS WITH OWNER, MIS OR COMMUNICATIONS CONTRACTOR.
- LOCATE DISCONNECTS AT EQUIPMENT AS REQUIRED BY MANUFACTURER. LOCATIONS ON DRAWINGS ARE APPROXIMATE.
- PROVIDE RISER OR PLENUM RATED CABLES ABOVE SUSPENDED CEILING.
- THE CONTRACTOR SHALL SET ALL ELECTRONIC BREAKERS TO SPECIFIED TRIP SETTINGS BEFORE ENERGIZING EQUIPMENT.
- PROVIDE EXPANSION FITTINGS FOR ALL UNDERGROUND REACWAYS ENTERING ENCLOSURES ATTACHED TO FIXED STRUCTURES.
- OUTDOOR RECEPTACLE COVERS SHALL COMPLY WITH NFPA 70 - ARTICLE 406.9.
- ALL CONDUCTOR INSULATION FOR BUILDING WIRE SHALL BE THWN/THHN UNLESS NOTED OTHERWISE.
- OUTLETS INSTALLED IN FIRE RATED WALLS BACK TO BACK SHALL BE SEPARATED BY 24" MINIMUM OR BE PROTECTED WITH "PUTTY PADS" PER 2009 INTERNATIONAL BUILDING CODE SECTION 713.3.2
- PROVIDE AIR VAPOR BARRIER BOXES FOR WIRING DEVICES IN EXTERIOR WALLS AND INTERIOR SOUND CONTROL WALLS BETWEEN RESIDENT ROOMS. INSTALL PER MANUFACTURER'S INSTRUCTIONS. PROVIDE LESSCO MODEL NUMBER: VAPORBOX
- MINIMUM WIRE SIZE ON ALL BRANCH CIRCUITS SHALL BE #12.

ABBREVIATIONS

| | | | |
|-------|---|--------|--|
| A | AMP | LP | LIGHTING PANELBOARD |
| AC | ALTERNATING CURRENT, ABOVE COUNTER | LTG | LIGHTING |
| ADA | AMERICANS WITH DISABILITIES ACT | LSIG | LONG TIME, SHORT TIME, INSTANTANEOUS, GROUND FAULT CIRCUIT BREAKER TRIP FUNCTIONS AS INDICATED |
| AF | AMP FRAME | MCC | MOTOR CONTROL CENTER |
| AFCI | ARC FAULT CIRCUIT INTERRUPTER | MCCB | MOLDED CASE CIRCUIT BREAKER |
| AFB | ABOVE FINISHED FLOOR | MCB | MAIN CIRCUIT BREAKER |
| AFG | ABOVE FINISHED GRADE | MDP | MAIN DISTRIBUTION PANEL |
| AC | AMPERES INTERRUPTING CAPACITY | MH | MANHOLE |
| AL | ALUMINUM | MLO | MAIN LUGS ONLY |
| AT | AMP TRIP | MTS | MANUAL TRANSFER SWITCH |
| ATC | AUTOMATIC TEMPERATURE CONTROL | NC | NORMALLY CLOSED OF NURSE CALL |
| ATS | AUTOMATIC TRANSFER SWITCH | NEC | NATIONAL ELECTRICAL CODE |
| AWG | AMERICAN WIRE GAUGE | NFPA | NATIONAL FIRE PROTECTION ASSOCIATION |
| BLDG | BUILDING | NL | NIGHT LIGHT |
| C | CONDUIT | NO | NORMALLY OPEN |
| CB | CIRCUIT BREAKER | NO. | NUMBER |
| CI | CAST IRON | OL | OVERLOAD |
| CKT | CIRCUIT | P | POLE |
| CL | CENTERLINE | PA | PUBLIC ADDRESS |
| CMP | CENTRAL MAINE POWER (ELECTRIC UTILITY) | PB | PUSH BUTTON |
| CMU | CONCRETE MASONRY UNIT | PF | POWER FACTOR |
| CT | CURRENT TRANSFORMER | PH | PHASE |
| CONC | CONCRETE | PNL | PANEL |
| CS | CARBON STEEL | TP1-2 | TELE-POWER POLE - POLE AND CIRCUIT NUMBER AS INDICATED |
| CU | COPPER | PSNH | PUBLIC SERVICE OF NEW HAMPSHIRE (ELECTRIC UTILITY) |
| CUH | CABINET UNIT HEATER | PT | POTENTIAL TRANSFORMER |
| DL | DAMP LOCATION | PVC | POLYVINYL CHLORIDE |
| EC | ELECTRICAL CONTRACTOR | RM | ELECTRICAL EQUIPMENT TO BE RELOCATED |
| EF | EXHAUST FAN | RL | ELECTRICAL EQUIPMENT TO REMAIN |
| ER | EXISTING REMAINS IN PLACE | RSC | RIGID STEEL CONDUIT |
| ERL | EXISTING RELOCATE | RTU | ROOF TOP UNIT |
| ERM | EXISTING REMOVE | RV | ELECTRICAL EQUIPMENT TO REMOVE |
| EUH | ELECTRIC UNIT HEATER | RVNR | REDUCED VOLTAGE, NON-REVERSING |
| EWC | ELECTRICAL WATER COOLER | SB | SMART BOARD |
| FACP | FIRE ALARM CONTROL PANEL | SF | SUPPLY FAN |
| FAPS | FIRE ALARM PULL STATION | SLD | SINGLE LINE DIAGRAM |
| FRP | FIBER REINFORCED PLASTIC | SM | MANUAL MOTOR STARTER SWITCH WITH THERMAL OVERLOAD DEVICE, MOUNTED AT UNIT |
| FVNR | FULL VOLTAGE, NON-REVERSING FURNISHED WITH UNIT | SS | SOLID STATE |
| FWU | FURNISHED WITH UNIT | SWBD-1 | SWITCHBOARD NUMBER AS DESIGNATED |
| DC | DIRECT CURRENT | TC | TIME CLOCK |
| GFI | GROUND FAULT INTERRUPTER | TS | TRANSFER SWITCH |
| GND | GROUND | T&B | TOP AND BOTTOM |
| HID | HIGH INTENSITY DISCHARGE | TYP | TYPICAL |
| HOA | HAND-OFF-AUTOMATIC | UG | UNDERGROUND |
| HP | HORSEPOWER | V | VOLT |
| HPS | HIGH PRESSURE SODIUM | VA | VOLT-AMPERE |
| HZ | HERTZ | VFD | VARIABLE FREQUENCY DRIVE |
| ICB | INSULATED CASE CIRCUIT BREAKER | W | WATT |
| JB | JUNCTION BOX | W/ | WITH |
| KAIC | THOUSAND AMP INTERRUPTING CAPACITY | WP | WEATHERPROOF |
| KCMIL | THOUSAND CIRCULAR MIL | XFMR | TRANSFORMER |
| KV | THOUSAND VOLTS | XP | EXPLOSION PROOF |
| KVA | THOUSAND VOLT-AMPS | 3PH | THREE PHASE |
| KW | THOUSAND WATTS (KILOWATT) | 4W | FOUR WIRE |
| LC | LIGHTING CONTACTORS | 3W | THREE WIRE |
| LCP | LATERAL CONTROL PIT | | |
| LED | LIGHT EMITTING DIODE | | |

SYMBOL LEGEND

- SURFACE MOUNTED POWER PANEL, SEE PANEL SCHEDULES FOR RATING
- RECESSED MOUNTED POWER PANEL, SEE PANEL SCHEDULES FOR RATING
- ELECTRIC MOTOR DRIVEN EQUIPMENT, HP SHOWN
- JUNCTION BOX, "H" DENOTES RANGE HOOD, "DS" DENOTES DISPOSAL, "DW" DENOTES DISHWASHER
- MANUAL MOTOR STARTER SWITCH WITH THERMAL OVERLOAD DEVICE MOUNTED AT UNIT
- DISCONNECT SWITCH, SIZE AND NUMBER OF POLES AS INDICATED ON DRAWING, PROVIDED BY EC UNLESS NOTED OTHERWISE. PROVIDE FUSES WHERE RECOMMENDED BY MANUFACTURER.
- COMBINATION MOTOR STARTER/ DISCONNECT SWITCH WITH AUXILIARY CONTACTS AND HAND-OFF-AUTO SWITCH AND RED RUN LIGHT. PROVIDED AND INSTALLED BY EC UNLESS NOTED OTHERWISE.
- VARIABLE FREQUENCY DRIVE, PROVIDED BY MC, INSTALLED AND WIRED BY EC
- DUPLEX RECEPTACLE, 20A, 125V SPEC GRADE GROUNDING TYPE, TAMPER PROOF AND MATCHING PLATE. MOUNT 18" AFF UNLESS NOTED OTHERWISE.
- QUAD RECEPTACLE, 20A, 125V SPEC GRADE GROUNDING TYPE, TAMPER PROOF AND MATCHING PLATE. MOUNT 18" AFF UNLESS NOTED OTHERWISE.
- DUPLEX RECEPTACLE, 20A, 125V SPEC GRADE GROUNDING TYPE, TAMPER PROOF AND MATCHING PLATE. MOUNT 18" AFF, BOTTOM RECEPTACLE SWITCHED.
- GROUND FAULT DUPLEX RECEPTACLE 20A, 125V, TAMPER PROOF WITH MATCHING PLATE FURNISHED W/ OUTLET. FLUSH MOUNTED 45" AFF UNLESS OTHERWISE NOTED.
- REFRIGERATOR DUPLEX RECEPTACLE, 20A, 125V SPEC GRADE GROUNDING TYPE, TAMPER PROOF AND MATCHING PLATE. MOUNT RECEPTACLE AT 48" AFF.
- FLUSH FLOOR MOUNTED DUPLEX RECEPTACLE - 20A, 125V SPEC GRADE GROUNDING TYPE. "CL" DENOTES CEILING MOUNTED
- RANGE OUTLET 50 AMP, 250 VOLT, GROUNDING TYPE FLUSH MOUNTED 18" AFF
- DRYER OUTLET 30 AMP, 250 VOLT, GROUNDING TYPE FLUSH MOUNTED 18" AFF
- BRANCH CIRCUIT WIRING SHALL CONSIST OF (1)1/2" C-2*12AWG-1*12GND UNLESS OTHERWISE NOTED. (1)ASTERISK DENOTES #10AWG FOR ALL CIRCUITS CONTAINED IN HOME RUN. (2)DOUBLE ASTERISK DENOTES (1)3/4" C-2*8AWG-1*10GND.
- PROVIDE EQUIPMENT GROUNDS IN ACCORDANCE WITH NFPA 70, ARTICLE 250.
- CABLE TV JUNCTION BOX "CTV", SIZE AS REQUIRED BY CABLE UTILITY
- TV OUTLET LOCATION, CABLE AND JACKS BY EC
- TEMPERATURE CONTROL PANEL, PROVIDED BY MC WIRED BY EC
- PUSHBUTTON FOR ELECTRICALLY OPERATED DOOR, FURN W/ DOOR OPERATOR, WIRED BY EC
- DOOR PUSHBUTTON-DOORBELL
- DOOR ELECTRIC STRIKE
- DOOR CHIME WITH STROBE-ADA COMMUNICATIONS REQUIREMENT
- LIGHTING FIXTURES, CAPITAL LETTERS DENOTE TYPE PER LIGHTING FIXTURE SCHEDULE. LOWER CASE LETTERS INDICATE SWITCH CONTROL. "ob" INDICATES INBOARD LAMPS CONTROLLED BY OUTBOARD SWITCHED "a" AND "b". DIAGONAL INDICATED NIGHT LIGHT (UNSWITCHED)
- SELF CONTAINED EMERGENCY LIGHT W/2 HEADS DUAL-LITE (LED) MODEL LZ25N1-03L, 25 WATTS FOR 90 MINUTES, OR APPROVED EQUAL, COLOR BY ARCHITECT
- EMERGENCY LIGHTING BATTERY PACK DUAL-LITE No LM130-12V1-0 SELF-DIAGNOSTIC
- INTERIOR REMOTE HEAD DUAL-LITE (LED) MODEL No CPDR 1203L, OR APPROVED EQUAL, COLOR BY ARCHITECT
- EXTERIOR REMOTE HEAD DUAL-LITE (LED) MODEL No OCRD 1203L, OR APPROVED EQUAL, COLOR BY ARCHITECT
- EXIT LIGHT FIXTURE, UNSWITCHED, DUAL-LITE LX-D-R-W-E OR APPROVED EQUAL
- EXIT/ EMERGENCY LIGHT COMBO, DUAL-LITE No EVCU-R-D4-1OR APPROVED EQUAL, COLOR BY ARCHITECT
- SECURITY CAMERA LOCATION, COORDINATE AND PROVIDE DUPLEX RECEPTACLE, DATA AND CONDUIT PER MANUFACTURERS RECOMMENDATIONS
- CEILING MOUNTED MOTION SENSOR (WATTSTOPPER OR EQUAL) CORRIDORS: WT-2255 SENSOR & B120E-P POWER PACK. OTHER COMMON SPACES: WT-605 SENSOR & B120E-P POWER PACK. SENSORS AND RELAYS TO CONTROL CIRCUITS IN SPACES INDICATED. DEVICES SHALL PROVIDE FULL COVERAGE IN AREAS INSTALLED. DT INDICATES DUAL TECHNOLOGY PIR INDICATED PASSIVE INFRARED TECHNOLOGY
- WALL MOUNTED SWITCH MOTION SENSOR. MOUNT AT 48" AFF UNLESS OTHER WISE NOTED
- SINGLE POLE SWITCH, 120V, 20A, SPEC GRADE, GROUNDING TYPE, MOUNT 48" AFF, 3-3-WAY, 4-4-WAY, LOWER CASE LETTER INDICATES FIXTURE OR CONTROLLED LOAD.
- SWITCH WITH PILOT LIGHT, SWITCH SHALL BE PROVIDED W/ ENGRAVED NAMEPLATE IDENTIFYING USE
- REMOTE RANGE HOOD FAN SWITCH, CONNECT TO HOOD FAN THRU HOOD JUNCTION BOX.
- REMOTE RANGE HOOD LIGHT SWITCH, CONNECT TO HOOD LIGHT THRU JUNCTION BOX.
- BURNER SAFETY SWITCH, PROVIDE WITH RED PLATE, MOUNTED 72" AFF
- SINGLE POLE DIMMER SWITCH, 120V, 20A, SPEC GRADE, GROUNDING TYPE, MOUNT 48" AFF, 3-3-WAY, 4-4-WAY, LOWER CASE LETTER INDICATES FIXTURE OR CONTROLLED LOAD.
- PHOTOCELL
- LIGHTING CONTACTOR
- TIMECLOCK
- TELEPHONE/DATA DUAL JACK, MOUNT 18" AFF, RUN TWO CAT 5E CABLES BACK TO TBB
- DATA JACK, RUN TWO CAT 5E CABLES BACK TO TBB.
- FLUSH FLOOR MOUNTED TELEPHONE/DATA DUAL JACK, RUN TWO CAT 5E CABLES BACK TO TBB. "CL" DENOTES CEILING MOUNTED
- TELEPHONE JACK, MOUNT 18" AFF UNLESS NOTED OTHERWISE, RUN ONE CAT 5E CABLE BACK TO TBB.
- TELEPHONE BACK BOARD
- WIFIROUTER, OCE CAT 5E CABLE BACK TO TBB OR IT ROOM. MOUNT ABOVE CEILING. "W" DENOTES WALL MOUNTED AT 72" AFF
- CARD READER LOCATION: PROVIDE BOX AND 3/4" CONDUIT TO NEAREST LOCATION ABOVE SUSPENDED CEILING. PROVIDE 120V DOOR STRIKE POWER FROM NEAREST RECEPTACLE CIRCUIT.
- FIRE ALARM CONTROL PANEL WITH DEDICATED TELEPHONE JACK
- FIRE ALARM ANNUNCIATOR PANEL
- FIRE EXTINGUISHER ELECTRONIC MONITOR-SHALL BE ACCOMPLISHED THROUGH USE OF AN ADDRESSABLE INTERFACE DEVICE AND SHALL PROVIDE INPUT TO THE FACP
- FIRE ALARM AUDIO/VISUAL, MOUNT 6'-8" AFF. NUMBER DENOTES CANDELA RATING. "MH" DENOTES MINIHORN, "CL" DENOTES CEILING MOUNTED. NO DESIGNATION EQUALS 15cd
- FIRE ALARM PULL STATION, MOUNT 48" AFF
- FIRE ALARM VISUAL STROBE ONLY, FLUSH MOUNT 6'-8" AFF, NUMBER DENOTES CANDELA RATINGS. "CL" DENOTES CEILING MOUNTED
- SYSTEM CONNECTED SMOKE / CARBON MONOXIDE DETECTOR, PHOTOELECTRIC TYPE
- SYSTEM CONNECTED FIXED TEMPERATURE HEAT DETECTOR
- SMOKE DETECTOR, PHOTOELECTRIC TYPE, SYSTEM CONNECTED.
- SMOKE DETECTOR, PHOTOELECTRIC TYPE, SYSTEM CONNECTED. "ER" DENOTES ELEV RECALL
- SYSTEM CONNECTED SMOKE DETECTOR, PHOTOELECTRIC TYPE, WITH SOUNDER BASE
- CARBON MONOXIDE DETECTOR
- DUCT SMOKE DETECTOR & TEST STATION
- FIRE/SMOKE DAMPER, SUPPLIED AND INSTALLED BY MECHANICAL CONTRACTOR. ELECTRICAL CONTRACTOR TO PROVIDE ALL WIRING CONNECTIONS AND FIRE ALARM DUCT SMOKE DETECTORS, ADDRESSABLE MODULES AND PROGRAMMING.
- SPRINKLER SYSTEM FLOW SWITCH } SUPPLIED BY SPRINKLER CONTRACTOR
- SPRINKLER SYSTEM TAMPER SWITCH } WIRED BY EC, VERIFY LOCATIONS WITH SPRINKLER CONTRACTOR.
- MAGNETIC DOOR HOLD
- WP DENOTES WEATHERPROOF CONSTRUCTION
- RP DENOTES EXISTING ELECTRICAL EQUIPMENT TO BE REPLACED
- RM DENOTES EXISTING ELECTRICAL EQUIPMENT TO REMAIN
- RL DENOTES EXISTING ELECTRICAL EQUIPMENT TO BE RELOCATED
- RV DENOTES EXISTING ELECTRICAL EQUIPMENT TO BE REMOVED



ADDITION TO BAYSIDE BOWL
ALDER STREET
PORTLAND, MAINE

CONSULTANTS:
ELECTRICAL
BENNETT ENGINEERING
7 BENNETT ROAD
FREEPORT, ME 04032
207-865-9475

BENNETT ENGINEERING
MECHANICAL • ELECTRICAL
(207) 865-9475

REVISIONS:
03/24/2016 PERMIT SET
07/25/2016 BATHROOM CHANGES
08/01/2016 ELECTRICAL SERVICE CHANGES

DATE: 18 MAR 2016
PROJECT No. ...
DRAWN BY: ...
CHECKED BY: SAJ
SCALE: 1/8" = 1'-0" U.N.O.

SHEET TITLE:
NOTES, ABBREVIATIONS,
SYMBOLS AND ONE-LINE