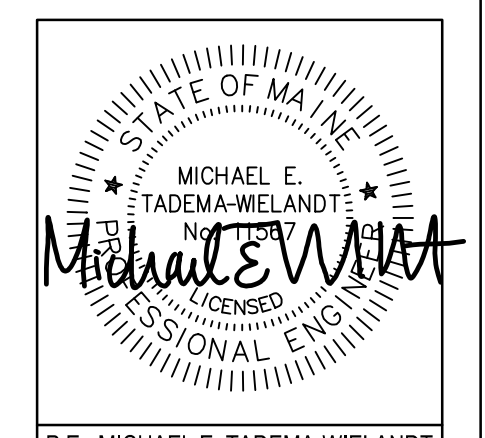
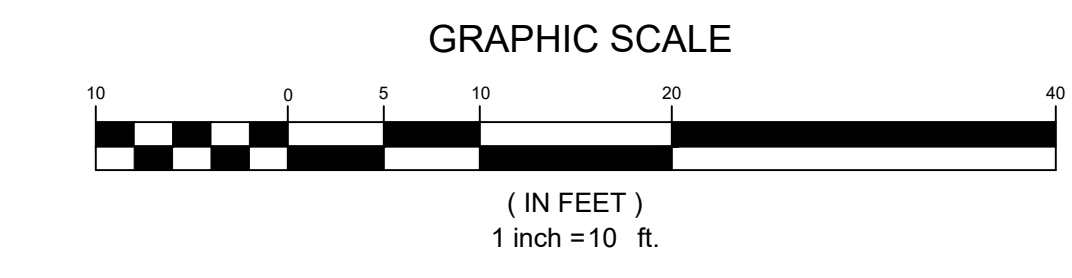


PRELIMINARY - NOT FOR CONSTRUCTION



P.E.: MICHAEL E. TADEAMA-WIELANDT
DATE: 3-28-2018

NO.	DATE	REVISIONS	BY
1	3-28-2018	SUBMITTED TO PLANNING BOARD FOR APPROVAL	MTW

565 CONGRESS STREET
SUITE 310
PORTLAND, ME 04102

CLIMBERLAND HALL
41 CAMPUS DRIVE, SUITE 101
NEW GLOUCESTER, ME 04260

OFFICE: (207) 926-5111 FAX: (207) 221-1317
www.terradynconsultants.com

TERRADYN CONSULTANTS, LLC
Civil Engineering - Land Planning - Stormwater Design - Environmental Permitting

SHEET DESCRIPTION 178 KENNEBEC STREET 178 KENNEBEC STREET PORTLAND, ME 04101 UTILITY PLAN	PREPARED FOR MAINE WORKFORCE HOUSING, LLC 482 CONGRESS STREET, SUITE 203 PORTLAND, ME 04101
DATE: 3/16/2018	SCALE: 1" = 10'
DESIGNED: ARF	JOB NO: 1747
FILE: 1747-B.DWG	SHEET C-5.0