

APPLICANT:
MAINE WORKFORCE HOUSING, LLC
 482 CONGRESS STREET, SUITE 203
 PORTLAND, MAINE 04101

PROJECT PARCELS

CITY OF PORTLAND TAX ASSESSOR'S MAP, BLOCK, & LOT NUMBERS

MAP	BLOCK	LOT	RECORD OWNER
34	F	1	CITY OF PORTLAND
34	F	2	ROSS Y. FURMAN

SITE DEVELOPMENT PLANS

FOR

178 KENNEBEC STREET

PORTLAND, MAINE

MARCH 2018

PERMIT DOCUMENTS

SHEET INDEX

C-1.0	COVER SHEET
C-1.1	GENERAL NOTES & LEGEND
1	BOUNDARY & TOPOGRAPHIC SURVEY
C-2.0	RECORDING PLAT - IN PROGRESS
C-2.1	CONSTRUCTION MANAGEMENT PLAN
C-3.0	SITE PLAN
C-4.0	GRADING, DRAINAGE & EROSION CONTROL PLAN
C-5.0	UTILITY PLAN
C-6.0	SITE DETAILS
C-6.1	UTILITY AND DRAINAGE DETAILS
C-6.2	EROSION CONTROL NOTES & DETAILS
L-1	LANDSCAPE PLAN
P-1	LIGHTING PHOTOMETRIC PLAN



LOCATION MAP

SCALE: 1"=500'

PERMITS

TYPE OF PERMIT	GOVERNING BODY	STATUS
SITE PLAN/SUBDIVISION APPROVAL	CITY OF PORTLAND PLANNING AUTHORITY CITY HALL, 389 CONGRESS STREET PORTLAND, ME 04101 TEL. 207.874.8722	SUBMITTED 3/28/2018
BUILDING PERMIT	CITY OF PORTLAND CODE ENFORCEMENT OFFICE CITY HALL, 389 CONGRESS STREET PORTLAND, ME 04101 TEL. 207.874.8900	TO BE SUBMITTED BY BUILDING CONTRACTOR
UTILITY / STREET OPENING	CITY OF PORTLAND PUBLIC SERVICES DIVISION 55 PORTLAND STREET PORTLAND, ME 04101 TEL. 207.874.8801	TO BE FILED BY SITE CONTRACTOR

UTILITIES

SEWER/STORM
 CITY OF PORTLAND
 PUBLIC SERVICES DIVISION
 55 PORTLAND STREET
 PORTLAND, MAINE 04102
 207.874.8850

WATER
 PORTLAND WATER DISTRICT
 22 DOUGLASS STREET
 P.O. BOX 3553
 PORTLAND, MAINE 04104
 207.774.5961

ELECTRIC
 CENTRAL MAINE POWER COMPANY
 162 CANCO ROAD
 PORTLAND, ME 04103
 (207) 842-2367

TELEPHONE
 FAIRPOINT COMMUNICATIONS
 5 DAVIS FARM ROAD
 P.O. BOX 11560
 PORTLAND, MAINE 04103
 888.984.1515

NATURAL GAS
 UNITIL
 376 RIVERSIDE INDUSTRIAL PARKWAY
 PORTLAND, MAINE 04103
 866.933.3821

DIG SAFE SYSTEM, INC.
 TEL. 1-888-DIG-SAFE (344-7233)
 WWW.DIGSAFE.COM

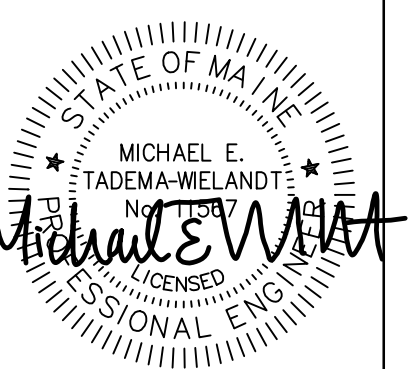
PREPARED BY:

CIVIL ENGINEER:
 TERRADYN CONSULTANTS, LLC
 565 CONGRESS STREET, SUITE 310
 PORTLAND, MAINE 04101
 207.926.5111
 CONTACT: MICHAEL TADEMA-WIELANDT

ARCHITECT:
 ARCHETYPE ARCHITECTS
 48 UNION WARF
 PORTLAND, ME 04101
 207.772.6022
 CONTACT: DAVID LLOYD

SURVEYOR:
 OWEN HASKELL, INC.
 309 U.S. ROUTE ONE, UNIT 10
 FALMOUTH, MAINE 04105
 207.774.0424
 CONTACT: RANDY LOUBIER

ELECTRICAL/MECHANICAL ENGINEER:
 BENNETT ENGINEERING
 P.O. BOX 297
 FREEPORT, MAINE 04032
 207.865.9475
 CONTACT: WILLIAM BENNETT



P.E.: MICHAEL E. TADEMA-WIELANDT
 DATE: 3-28-2018

NO.	DATE	REVISIONS
1	3-28-2018	SUBMITTED TO PLANNING BOARD FOR APPROVAL

565 CONGRESS STREET
 SUITE 310
 PORTLAND, ME 04102

CITY OF PORTLAND
 389 CONGRESS STREET
 PORTLAND, ME 04101

OFFICE: (207) 926-5111 FAX: (207) 221-1317
 www.terradynconsultants.com

TERRADYN CONSULTANTS, LLC
 Civil Engineering - Land Planning - Stormwater Design - Environmental Permitting

SHEET DESCRIPTION	178 KENNEBEC STREET
SCALE:	AS NOTED
DESIGNED:	ARF
JOB NO:	1747
FILE:	1728 COVER.DWG
SHEET	C-1.0

PRELIMINARY - NOT FOR CONSTRUCTION