

Jeffrey
Taylor
Architect

572 North Broadway
White Plains, N.Y. 10603
Tel 914 289 0011
Fax 914 289 0022

SYMBOLS & ABBREVIATIONS

---	SANITARY WASTE
---	SANITARY VENT
---	STORM DRAIN
---	ST
---	DOMESTIC COLD WATER
---	DOMESTIC HOT WATER
---	DOMESTIC HOT WATER RETURN
---	FIRE PROTECTION MAIN
---	NATURAL GAS
---	CONDENSATE DRAIN (GRAB)
---	CONDENSATE DRAIN (PUMPED)
---	PO
---	BALL VALVE
---	GLOBE VALVE
---	GATE VALVE
---	CHECK VALVE
---	GAS COCK
---	PRESSURE REDUCING VALVE
---	PRESSURE RELIEF VALVE
---	STRAINER
---	UNION
---	FLOOR CLEAN-OUT
---	WALL CLEAN-OUT
---	HOSE BIBB
---	WATER HAMMER ARRESTOR
---	TAP PRIMER
---	POINT OF CONNECTION
---	AF
---	ABOVE FLOOR
---	COLD WATER
---	DN
---	DOWN
---	ELEVATION
---	EX
---	FLOOR CLEAN-OUT
---	FDD
---	FLOOR DRAIN
---	FF
---	FINISHED FLOOR
---	FLR
---	FLOOR
---	FS
---	FLOOR SINK
---	HB
---	HOB
---	HOB DRAIN
---	HTHW
---	HOT WATER
---	HOW WATER
---	HW
---	HOT WATER RETURN
---	OVERFLOW ROOF DRAIN
---	ORD
---	ROOF DRAIN
---	SD
---	STORM DRAIN
---	TAP PRIMER
---	UNDER FLOOR
---	UP
---	UNDER FLOOR
---	SANITARY VENT
---	SANITARY WASTE
---	W
---	W/
---	W/O
---	W/OUT
---	W/OUT
---	WATER HAMMER ARRESTOR

CONTRACTOR NOTES:

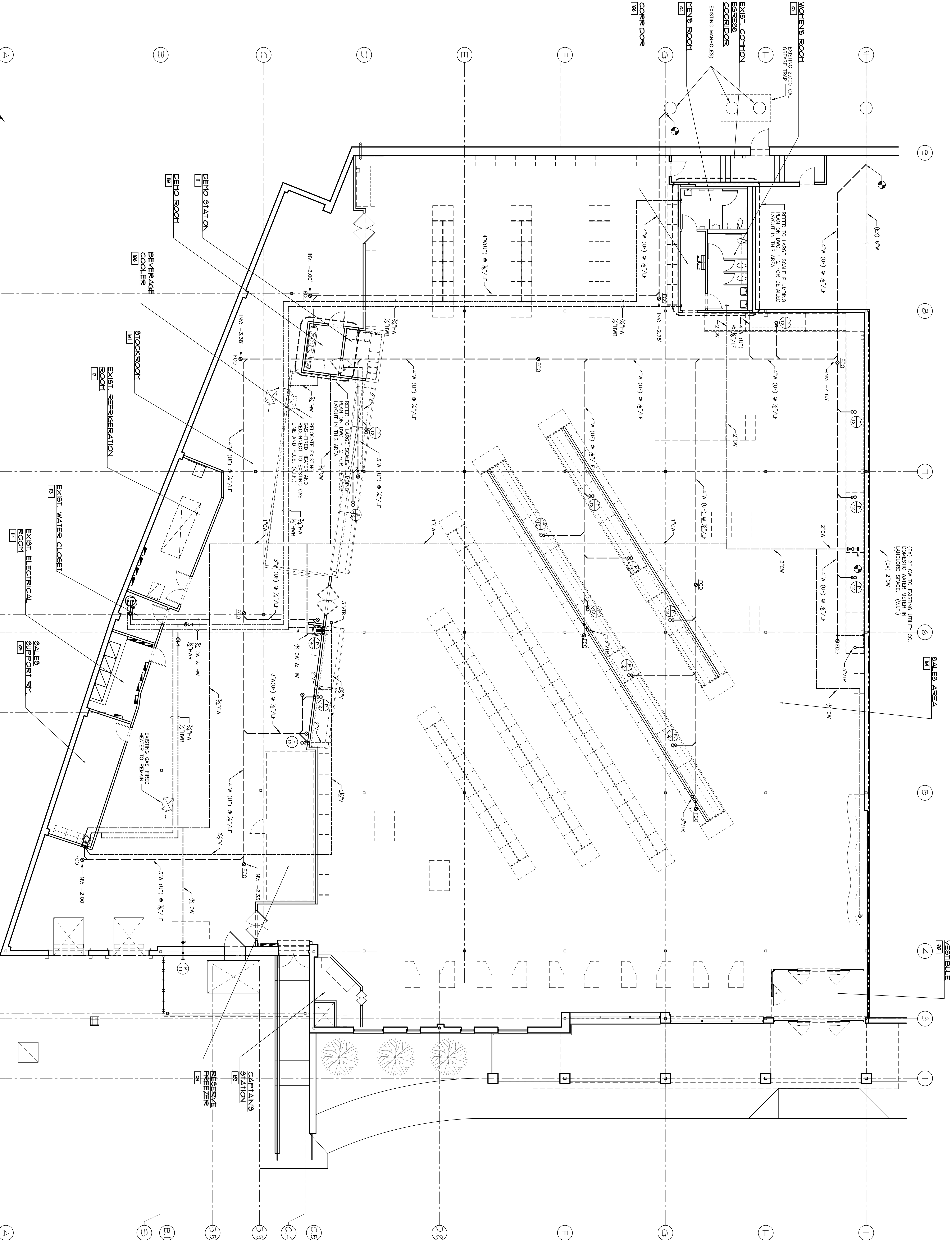
- 1) THE TENANT GENERAL CONTRACTOR TO VERIFY WITH LOCAL AGENCIES THAT ALL REQUIRED PERMITS AND INSPECTIONS HAVE BEEN COMPLETED PRIOR TO SUBMISSION OF A BID.
- 2) THE PLUMBING CONTRACTOR SHALL VISIT THE SITE TO FIELD PRESSURES (WHERE APPLICABLE) PRIOR TO SUBMISSION OF A BID.
- 3) THE PLUMBING CONTRACTOR SHALL SET INVERTS FOR THE NEW DRAINAGE PIPING BASED ON THE EXISTING VERIFIED INVERTS.
- 4) THE PLUMBING CONTRACTOR SHALL INCLUDE IN HIS BID THE REQUIREMENTS OF THE EXISTING CONDITIONS.
- 5) ALL REQUIRED FLOOR TRENCHING FOR THE NEW SANITARY WASTE LINES SHALL BE PROVIDED AT THE PLUMBING CONTRACTOR'S EXPENSE. THE PLUMBING CONTRACTOR SHALL REPAIR AND REFINISH THE FLOOR TO MATCH THE EXISTING FLOOR FINISH.

GAS PIPING NOTE

- 1) ALL PRESSURE REGULATOR GAS PIPING AND PRESSURE REGULATOR ARE EXISTING TO REMAIN. T.O.C. SHALL INSPECT ALL PIPING AND REPAIR/REPLACE AS NECESSARY.

EXISTING CONDITIONS NOTE

A SURVEY OF EXISTING CONDITIONS WAS NOT COMPLETED BY THIS ENGINEER. THE EXISTING CONDITIONS DEPICTED ARE BASED ON INFORMATION PROVIDED BY OTHERS. EXISTING CONDITIONS DOCUMENTED ON THESE DRAWINGS MATCH THE FIELD CONDITIONS. UNDER ANY CIRCUMSTANCE THAT THERE ARE DISCREPANCIES BETWEEN THE EXISTING CONDITIONS AND THE ACTUAL FIELD CONDITIONS, THE ENGINEER SHALL BE NOTIFIED IMMEDIATELY FOR DECISIONS TO BE INCORPORATED INTO THE WORK TO FULFILL THE INTENT OF SYSTEM DESIGN.



PLUMBING PLAN
SCALE: 1/8" = 1'-0"

Don Penn
Consulting Engineer
639 Westport Parkway Suite 300
Grapevine, Texas 76051
817-410-2858 FAX 817-231-8411



TRADER JOE'S
87 MARGINAL WAY
PORTLAND, ME. 04101

PLUMBING PLAN

SALES :	17,224 sq. ft.
STOCK :	5,424 sq. ft.
TIBC :	1,464 sq. ft.
TOTAL :	23,930 sq. ft.

DATE	04/28/10
JOB No.	FT-7912
DRAWN BY:	FTA
TENANT STORE No.	XXXX
SPACE No.	XXXXX

REVISIONS	NO.	DATE

COMMENTS

SEAL