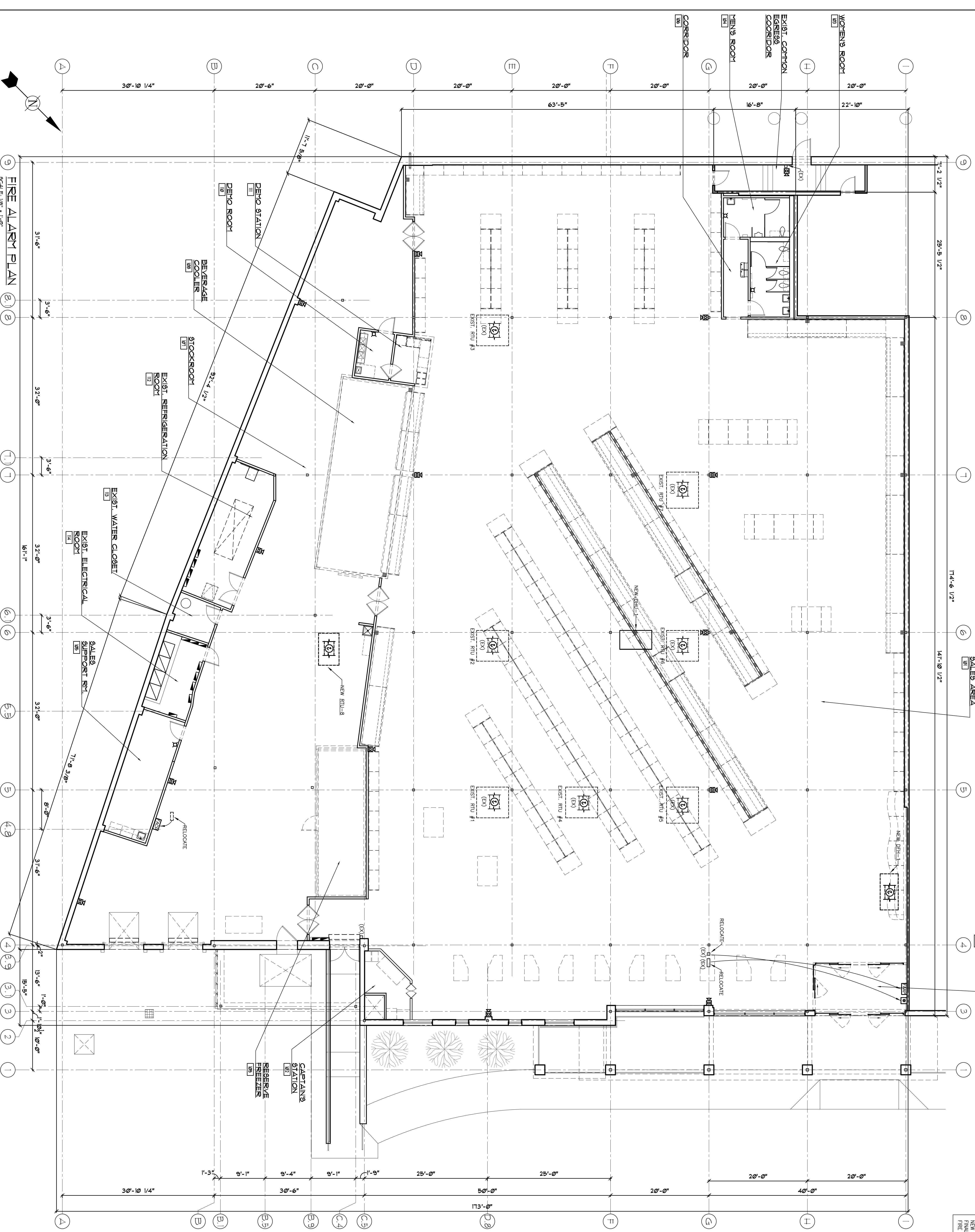


GENERAL NOTES:

1. A SURVEY OF EXISTING CONDITIONS WAS NOT CONDUCTED BY THE ENGINEER. THE EXISTING CONDITIONS DEPICTED ARE BASED ON INFORMATION PROVIDED BY OTHERS. THE FIRE ALARM CONTRACTOR SHALL VERIFY THAT ALL EXISTING CONDITIONS DOCUMENTED ON THESE DRAWINGS MATCH THE FIELD CONDITIONS. DOCUMENTED EXISTING CONDITIONS AND THE ACTUAL FIELD CONDITIONS. THE ENGINEER SHALL BE NOTIFIED IMMEDIATELY FOR DECISIONS AND INSTRUCTIONS TO FULFILL THE INTENT OF SYSTEM DESIGN.

FIRE ALARM SYSTEM

THE DESIGN FOR THE MODIFICATIONS TO THE EXISTING FIRE ALARM SYSTEM WILL BE PERFORMED BY THE FIRE ALARM CONTRACTOR.
THIS PLAN IS INTENDED ONLY TO PROVIDE AN UNDERSTANDING OF THE SCOPE OF MODIFICATIONS TO THE EXISTING FIRE ALARM SYSTEM IN COMPLIANCE WITH NFPA 72 (NATIONAL FIRE ALARM CODE), NFPA 70 (NATIONAL ELECTRICAL CODE), ALL STATE AND LOCAL CODES AND ORDINANCES, AND THE PLAN'S SPECIFICATIONS.
THE ELECTRICAL CONTRACTOR SHALL PREPARE AND FILE SHOP DRAWINGS AND THE ELECTRICAL CONTRACTOR SHALL VERIFY THAT THE SYSTEM IS IN COMPLIANCE WITH ALL APPLICABLE CODES, ORDINANCES, AND ALL STATE AND LOCAL CODES AND ORDINANCES. THE ARCHITECT, AND ALL STATE, LOCAL AND MUNICIPAL AUTHORITIES COMMANDER OF ANY INSTALLATION WORK SHALL BE PERFORMED BY THE FIRE ALARM CONTRACTOR.
FINAL FIRE ALARM SYSTEM & DEVICES WILL BE FINISHED AND INSTALLED BY E.C. FINAL TIE-IN TO THE EXISTING FIRE ALARM PANEL SHALL BE PERFORMED BY THE FIRE ALARM CONTRACTOR.



FIRE ALARM PLAN

SCALE: 1/8" = 1'-0"

FIRE ALARM SYMBOL LEGEND	
	FIRE ALARM CONTROL PANEL
	FIRE ALARM ANNUNCIATOR PANEL
	FIRE ALARM TERMINAL CABINET
	MONITOR MODULE
	END OF LINE RESISTOR
	FIRE SPRINKLER FLOW SWITCH
	FIRE SPRINKLER TAMPER SWITCH
	AUDIBLE NOTIFICATION APPLIANCE 907AHF
	VISIBLE NOTIFICATION APPLIANCE 907AHF
	COMBINATION AUDIBLE/VISUAL NOTIFICATION APPLIANCE 807AHF
	MANUAL PULL STATION, 487AHF
	AREA SMOKE DETECTOR
	SMOKE DETECTOR IN DUCT AS REQUIRED BY CODE, FINISHED AND MONITORED BY MECHANICAL CONTRACTOR BY ELECTRICAL CONTRACTOR
	HEAT DETECTOR (FIXED TEMPERATURE)
	WEATHERPROOF ENCLOSURE

SALES	DATE
17,224 sq. ft.	04/28/10
STOCK	JOB No.
5,424 sq. ft.	FT-7912
MISC.	DRAWN BY:
1,464 sq. ft.	FTA
TOTAL	TENANT STORE No.
23,930 sq. ft.	XXXX
	SPACE No.
	XXXX

PROJECT	TRADER JOE'S
87 MARGINAL WAY PORTLAND, ME. 04101	
SHEET NAME	FIRE ALARM PLAN

REVISIONS	COMMENTS
NO.	DATE

SEAL

dp DON PENN CONSULTING ENGINEER
635 WESTPORT PARKWAY SUITE 300
GRAPEVINE, TEXAS 76051
817-410-2888 FAX 817-231-8411

572 North Broadway
White Plains, N.Y. 10603
Tel 914 298 0011
Fax 914 298 0022

Jeffrey Taylor
Architect