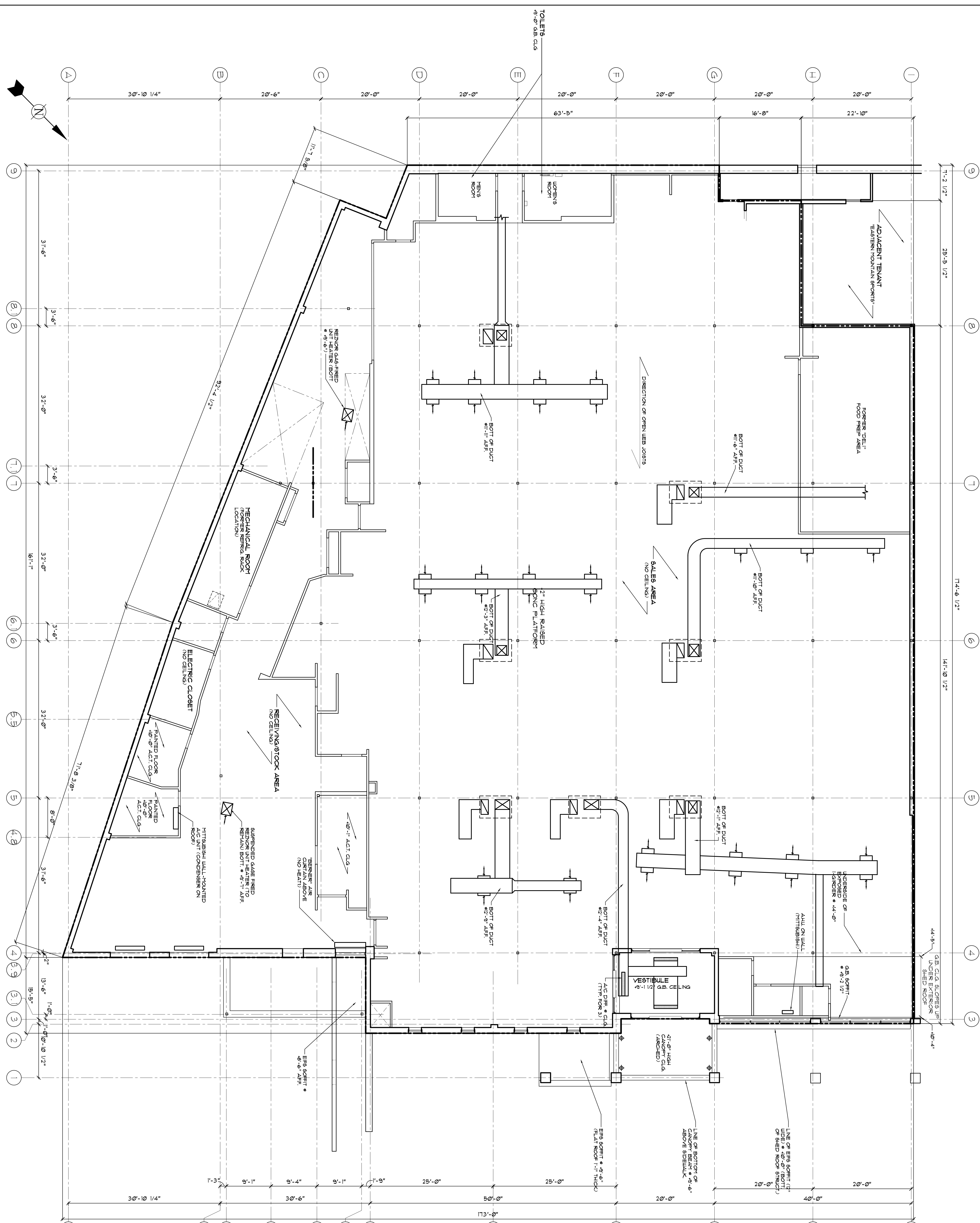


EXISTING CONDITION REFLECTED CEILING PLAN

SCALE: 1/8" = 1'-0"



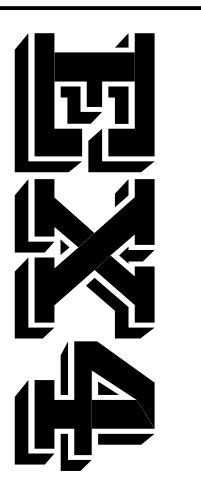
TOTAL SQUARE FOOTAGE = 23,931

**BUILDING IS SPRINKLED**  
 SPRINKLER RISERS & ADJACENT TENANT SPACE  
 TENANT SPACE HAS STAND-ALONE FIRE ALARM SYSTEM  
 EXISTING CANNERS HAVE DRY LOOP SPRINKLER COVERAGE

SURVEY DATE 3/04/10

**INITIATING CONDITIONS**  
 HEIGHT TO UNDERSIDE METAL ROOF DECK  
 HEIGHT (LOW POINT) = 35'-6"  
 HEIGHT TO UNDERSIDE OPEN WEB JOISTS (FRONT TO BACK BETWEEN COLUMNS)  
 HEIGHT (LOW POINT) = 35'-8"  
 HEIGHT TO UNDERSIDE STEEL 1"-DOWN RUNNING SIDE TO SIDE  
 HEIGHT (LOW POINT) = 35'-8"

**Jeffrey Taylor**  
 Architect  
 572 North Broadway  
 White Plains, NY 10603  
 Tel 914 289 0011  
 Fax 914 289 0022



PROJECT **TRADER JOE'S**  
 87 MARGINAL WAY  
 PORTLAND, ME.

SHEET NAME  
**EXISTING CONDITIONS  
 REFLECTED CEILING PLAN**

SALES :	XXXX sq. ft.	DATE :	3/26/09
STOCK :	XXXX sq. ft.	JOB No. :	FT-1912
MISC. :	XXX sq. ft.	DRAWN BY :	FT.A
TOTAL :	23,931 sq. ft.	TENANT STORE No. :	XXX
		SPACE No. :	XXXX

REVISIONS		COMMENTS
NO.	DATE	
