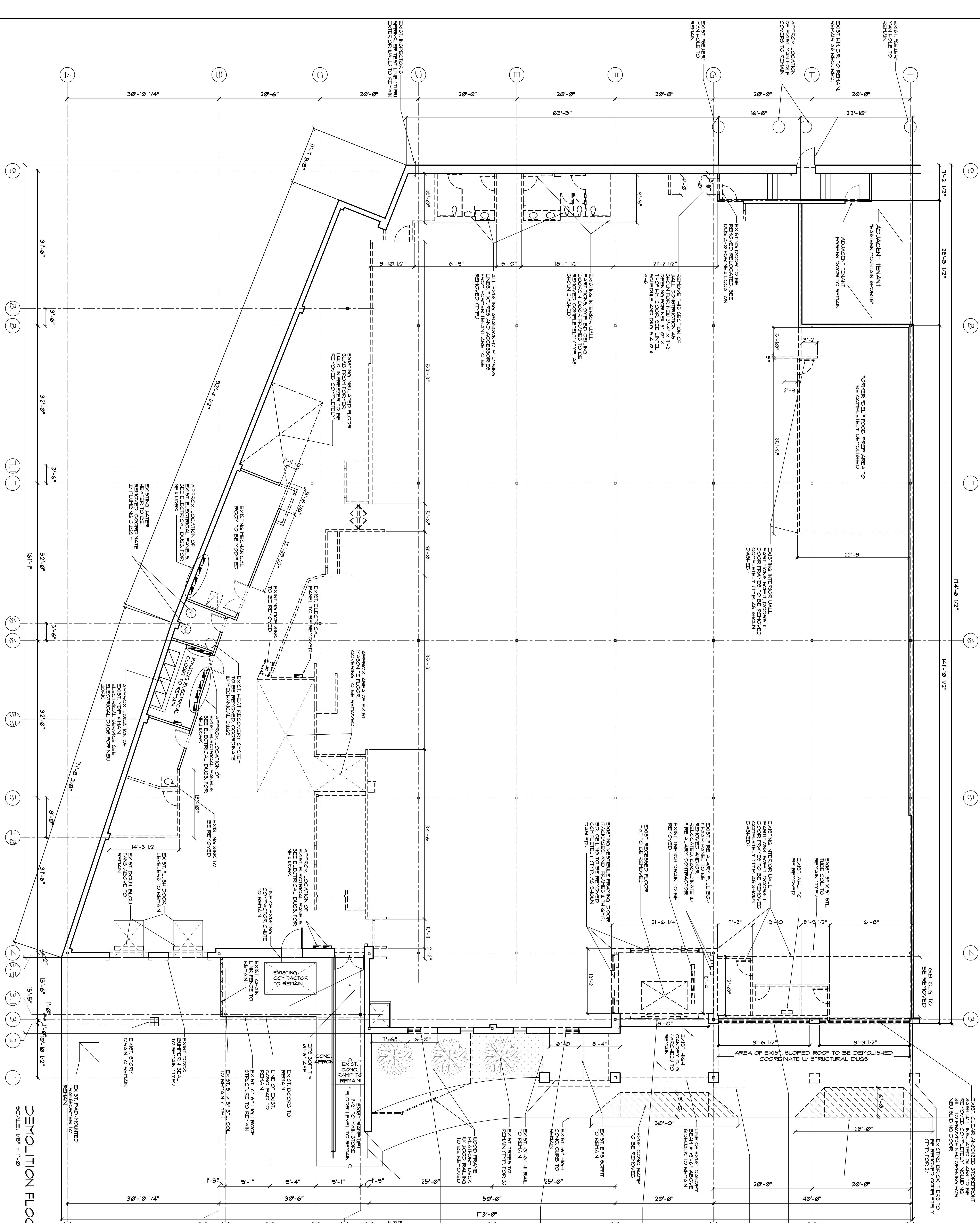


WALL LEGEND	
	EXISTING TO REMAIN
	EXISTING TO BE DEMOLISHED

- DEMOLITION NOTES:**
- COMPLETELY DEMOLISH INTERIOR OF EXISTING AREA OF SPACE. REMOVE ALL FINISHES INCLUDING BUT NOT LIMITED TO: CEILING, FLOORING, PARTITION WALLS, WALLS, AND PARTITIONS WHERE NOTED. LIGHT FIXTURES AND ELECTRICAL WIRING BACK TO PANELS AND OTHER IMPROVEMENTS BY MECHANICAL AND PLUMBING DRAWINGS FOR ADDITIONAL REMOVALS AND DEMOLITION NOTES.
 - COORDINATE THE REMOVAL AND/OR RELOCATION OF THE EXISTING FIRE ALARM DEVICES & DEVICES WITH THE FIRE PROTECTION CONTRACTORS APPROVED DRAWINGS & LOCAL FIRE DEPARTMENT.
 - INSPECT AND DETERMINE IF ANY TIE-BEAMS, WALLS, EQUIPMENT ETC. INDICATED TO BE REMOVED CAN BE REUSED. IF NOT, REMOVE AND REPAIR AS NECESSARY. NOTIFY TENANT PROJECT MANAGER AND/OR ARCHITECT FOR DIRECTION BEFORE REUSE. REMOVE AND REUSE FOUND TO BE REUSED. REMOVE AND REPAIR, TENANT G.C. TO NOTIFY TENANT OR ARCHITECT OF SAME.
 - REMOVE ALL EXISTING ABANDONED PIPING LINES AND ELECTRICAL LINES. REPAIR AND PATCH EXISTING FLOOR SLAB TO MAKE LEVEL.



DEMOLITION FLOOR PLAN
SCALE: 1/8" = 1'-0"

TRADER JOE'S
81 MARGINAL WAY
PORTLAND, ME. 04101

JEFFREY TAYLOR ARCHITECT

572 North Broadway
White Plains, N.Y. 10603
Tel 914 589 0011
Fax 914 589 0022

SALES :	17,224 sq. ft.	DATE :	04/28/10
STOCK :	9,424 sq. ft.	JOB No. :	FT-1912
MISC. :	1,464 sq. ft.	DRAWN BY :	FTA
TOTAL :	23,930 sq. ft.	TENANT STORE No. :	XXXX
		SPACE No. :	XXXX

REVISIONS		COMMENTS
NO.	DATE	

SEAL

Jeffrey Taylor Architect